



## 2020 Chevrolet Corvette 2LT

**Our Price \$94,999**

View this vehicle on our website at [milleniamotors.com](http://milleniamotors.com)



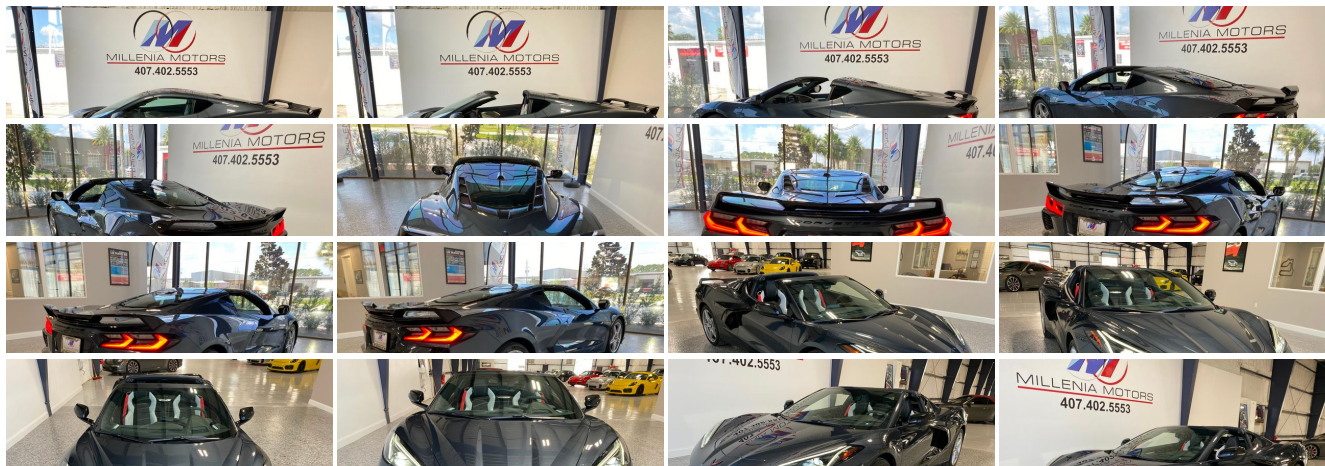
(407) 402-5553

135 Mingo Trail , Longwood, FL 32750

Photos

Details

Contact





## Specifications:

<b>Year:</b>	2020
<b>VIN:</b>	<a href="#">1G1Y72D48L5101746</a>
<b>Make:</b>	Chevrolet
<b>Stock:</b>	101746-C
<b>Model/Trim:</b>	Corvette 2LT
<b>Condition:</b>	Pre-Owned
<b>Body:</b>	Coupe
<b>Exterior:</b>	Shadow Gray Metallic
<b>Engine:</b>	ENGINE, 6.2L V8 DI, HIGH-OUTPUT
<b>Interior:</b>	Gray Leather
<b>Transmission:</b>	TRANSMISSION, 8-SPEED DUAL CLUTCH, INCLUDES MANUAL AND AUTO MODES
<b>Mileage:</b>	1,954
<b>Drivetrain:</b>	Rear Wheel Drive
<b>Economy:</b>	City 15 / Highway 27

## Vehicle Description

Z51!! 2 LT!! GT2 SEATS!! Carfax Certified call or text Oliver 407-402-5553. Options-

2LT Preferred Equipment Grp- \$7,300  
 Shadow Gray Metallic  
 GT2 Seat Buckets- \$1,495  
 Sky Cool Gray, Napa Leather  
 Seat Belt Color, Torch Red- \$395  
 Z51 Performance Pkg- \$5,000  
 Calipers, Edge Red Painted- \$595  
 Two Tone Seats- \$395  
 Sueded Microfiber Wrapped Steering Whl- \$595

Carfax Certified, Autocheck Certified, Florida car. Balance of Factory Warranty.

Exterior- Like New, Interior- Extra clean, like new. This Corvette Stingray Coupe is very nice find- tons of options, great colors, clean history and shows like new. Finished in Shadow Gray Metallic with Sky Cool Gray leather. Includes 2-keys/2-remotes and all owners manuals. Give us a call or send us an email before it's too late. No Hidden Fees, No Hassle Buying. Save Thousands \$\$\$\$. Click On Link To Our Website At [www.MILLENNIAMOTORS.com](http://www.MILLENNIAMOTORS.com) For Up To 80 Photos. Trade-Ins Accepted, Ask For Details. Call Oliver Today For Appointment. All prices plus sales tax, tag and titling, and dealer service fee of \$399, which represents cost and profits to the selling dealer for items such as cleaning, inspecting and preparing documents related to the sale.

## Installed Options

### Interior

- Console, floor 2 covered cup holders, auxiliary power outlet, USB ports, auxiliary input jack and lockable storage
- Door locks, power programmable with lockout protection- Floor mats, carpeted
- Keyless Open and Start includes 2 remote transmitters that enable automatic door unlock and open by touching door switch
- Mulan leather seating surfaces with perforated inserts
- Rear Camera Mirror inside rearview auto-dimming with full camera display
- Seat adjuster, driver 8-way power- Seat adjuster, power driver lumbar control
- Seats, GT1 bucket- Theft deterrent sensor, vehicle inclination
- Theft deterrent sensor, vehicle interior movement
- Theft-deterrent system, electrical, unauthorized entry, activates the horn
- Theft-deterrent system, vehicle, push button start, immobilizer and audible visual alarm
- Air conditioning, dual-zone automatic climate control individual climate settings for driver and passenger with outside temperature display

## Option Packages

### Factory Installed Packages

#### ENGINE, 6.2L V8 DI, HIGH-OUTPUT

Variable Valve Timing (VVT), Active Fuel Management (AFM) (490 hp [365.4 kW] @ 6450 rpm, 465 lb-ft of torque [627.8 N-m] @ 5150 rpm)

#### TRANSMISSION, 8-SPEED DUAL CLUTCH, INCLUDES MANUAL AND AUTO MODES

#### BRAKES, Z51 PERFORMANCE

larger brake rotors with Z51 logo on calipers; 13.6" (345 mm) front and 13.8" (350 mm) rear

- and passenger, with outside temperature display
- Air filtration system with pollen filter- Cargo nets, 2
- Chevrolet Connected Access (Subject to terms. See onstar.com or dealer for details.)
- Cruise control, electronic with set and resume speed - Defogger, rear-window, electric
- Gauge cluster, 12" diagonal color with driver information display with multiple selectable modes and gauge configurations
- Hatch release, push button open
- Head-Up Display color display with 3 modes: tour, sport, track; can display speed, gear, tach, shift lights, turn signals, bright headlamps, turn-by-turn navigation, g-meter, speed limit, lap times
- Lighting, interior, theater dimming
- Memory Driver and Passenger Convenience Package includes steering wheel and outside mirrors plus seat memory for both driver and passenger; key fob or door button activated
- Oil life monitoring system- Remote vehicle starter system
- Seat adjuster, driver power bolster- Seat adjuster, passenger 8-way power
- Seat adjuster, passenger power bolster- Seat adjuster, power passenger lumbar control
- Seat belt color, Black- Seats, heated and vented driver and passenger
- Steering column, power tilt and telescopic
- Steering wheel controls, audio, voice recognition, cruise and Driver Information Center
- Steering wheel, heated- Steering wheel, leather-wrapped
- Universal Home Remote includes garage door opener, 3-channel programmable, located on driver visor
- Vehicle health management provides advanced warning of vehicle issues
- Visors, driver and passenger illuminated vanity mirrors, covered
- Windows, power with driver and passenger Express-Down/Up
- Wireless Charging for devices

## Exterior

- Roof panel, body-color, removable
- Tires, 245/35ZR19 front and 305/30ZR20 rear, blackwall, all-season, performance
- Wheels, 19" x 8.5" (48.3 cm x 21.6 cm) front and 20" x 11" (50.8 cm x 27.9 cm) rear 5-open-spoke Bright Silver-painted aluminum
- Carbon Flash Exterior Badge Package
- Exterior accents, Carbon Flash, side vents and front/rear grille accents
- Glass, Solar-Ray light-tinted- Headlamps, LED
- Mirrors, outside heated, power-adjustable, power-folding driver-side auto-dimming with turn signal indicators
- Wipers, front intermittent

## Safety

- Console, floor 2 covered cup holders, auxiliary power outlet, USB ports, auxiliary input jack and lockable storage
- Door locks, power programmable with lockout protection- Floor mats, carpeted
- Keyless Open and Start includes 2 remote transmitters that enable automatic door unlock and open by touching door switch
- Mulan leather seating surfaces with perforated inserts
- Rear Camera Mirror inside rearview auto-dimming with full camera display
- Seat adjuster, driver 8-way power- Seat adjuster, power driver lumbar control
- Seats, GT1 bucket- Theft deterrent sensor, vehicle inclination
- Theft deterrent sensor, vehicle interior movement
- Theft-deterrent system, electrical, unauthorized entry, activates the horn
- Theft-deterrent system, vehicle, push button start, immobilizer and audible visual alarm
- Air conditioning, dual-zone automatic climate control individual climate settings for driver and passenger, with outside temperature display
- Air filtration system with pollen filter- Cargo nets, 2
- Chevrolet Connected Access (Subject to terms. See onstar.com or dealer for details.)
- Cruise control, electronic with set and resume speed - Defogger, rear-window, electric
- Gauge cluster, 12" diagonal color with driver information display with multiple selectable modes and gauge configurations
- Hatch release, push button open
- Head-Up Display color display with 3 modes: tour, sport, track; can display speed, gear, tach, shift lights, turn signals, bright headlamps, turn-by-turn navigation, g-meter, speed limit, lap times
- Lighting, interior, theater dimming
- Memory Driver and Passenger Convenience Package includes steering wheel and outside mirrors plus seat memory for both driver and passenger; key fob or door button activated
- Oil life monitoring system- Remote vehicle starter system
- Seat adjuster, driver power bolster- Seat adjuster, passenger 8-way power
- Seat adjuster, passenger power bolster- Seat adjuster, power passenger lumbar control
- Seat belt color, Black- Seats, heated and vented driver and passenger
- Steering column, power tilt and telescopic
- Steering wheel controls, audio, voice recognition, cruise and Driver Information Center

LPO, FLOOR MATS, PREMIUM CARPETED with car silhouette logo, Genuine Corvette Accessory	\$235
--	-------

SEATS, TWO-TONE	\$395
-----------------	-------

STEERING WHEEL, SUEDED MICROFIBER-WRAPPED	\$595
---	-------

## SUSPENSION, Z51 PERFORMANCE

Z51 PERFORMANCE PACKAGE includes (J55) Z51 performance brakes, (FE3) Z51 performance suspension, (NPP) performance exhaust, (GM7) performance rear axle ratio, (G96) Electronic Limited Slip Differential (eLSD), (T0A) Z51 rear spoiler, front splitter, (XFQ) 245/35ZR19 front and 305/30ZR20 rear, blackwall, high performance tires and (V08) heavy-duty cooling system	\$5,000
---	---------

## SHADOW GRAY METALLIC

2LT PREFERRED EQUIPMENT GROUP includes Standard Equipment	\$7,300
--	---------

SEAT BELT COLOR, TORCH RED	\$395
----------------------------	-------

SKY COOL GRAY, NAPA LEATHER SEATING SURFACES WITH PERFORATED SUEDED MICROFIBER INSERTS (Seats are Jet Black when (AE4) Competition seats are ordered.)	
---	--

SEATS, GT2 BUCKET	\$1,495
-------------------	---------

WHEELS, 19" X 8.5" (48.3 CM X 21.6 CM) FRONT AND 20" X 11" (50.8 CM X 27.9 CM) REAR 5-OPEN-SPOKE BRIGHT SILVER- PAINTED ALUMINUM	
--	--

Option Packages Total	\$15,415
-----------------------	----------

- Steering wheel, heated- Steering wheel, leather-wrapped
- Universal Home Remote includes garage door opener, 3-channel programmable, located on driver visor
- Vehicle health management provides advanced warning of vehicle issues
- Visors, driver and passenger illuminated vanity mirrors, covered
- Windows, power with driver and passenger Express-Down/Up
- Wireless Charging for devices

## Mechanical

- Differential, mechanical limited-slip
- Brakes, 4-wheel antilock, 4-wheel disc 12.6" (321 mm) front and 13.3" (339 mm) rear brake rotors
- Calipers, Black-painted
- Engine, 6.2L V8 DI, high-output Variable Valve Timing (VVT), Active Fuel Management (AFM) (490 hp [365.4 kW] @ 6450 rpm, 465 lb-ft of torque [627.8 N-m] @ 5150 rpm)
- Exhaust, aluminized stainless-steel with stainless-steel tips - Frame, aluminum structure
- Rear wheel drive- Steering, power, magnetic rack-and-pinion, variable assist
- Suspension, Corvette standard
- Transmission, 8-speed dual clutch, includes manual and auto modes

We at Millenia Motors Inc., are in no way affiliated with Porsche® Cars North America. We are not a Porsche® Dealer, nor do we represent ourselves as a Porsche® Franchise Dealership.

Millenia Motors

Millenia Motors

View this car on our website at [milleniamotors.com/6865130](https://milleniamotors.com/6865130)

Website: [milleniamotors.com](https://milleniamotors.com)

Phone: (407) 402-5553

Map: [135 Mingo Trail, Longwood, FL 32750](#)



