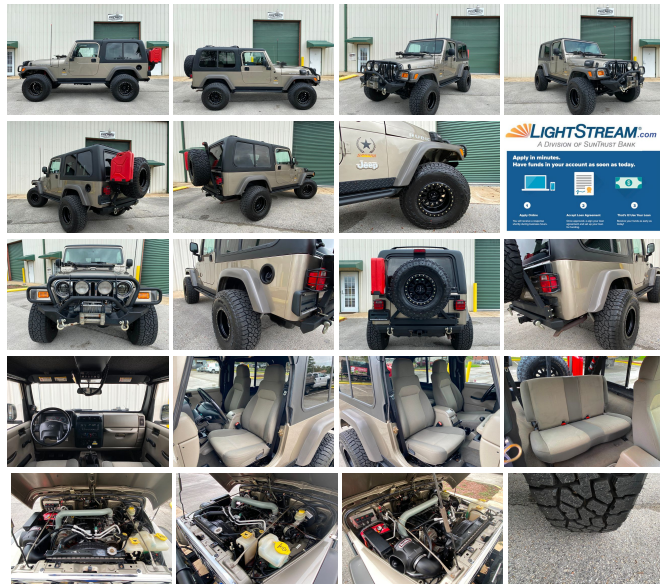


3075 Leon Rd  
Jacksonville , FL 32246

# 2005 Jeep Wrangler Rubicon Sahara

## Nolan Hill

View this car on our website at [premierautomotivesource.com/6860013/ebrochure](http://premierautomotivesource.com/6860013/ebrochure)



### Our Price **\$0**

#### Specifications:

**Year:** 2005  
**VIN:** 1J4FA64S95P351259  
**Make:** Jeep  
**Model/Trim:** Wrangler Rubicon Sahara  
**Condition:** Pre-Owned  
**Body:** SUV  
**Exterior:** Light Khaki Metallic  
**Engine:** 4.0L SMPI I6 "POWER TECH" ENGINE  
**Interior:** Khaki Cloth  
**Transmission:** 5-SPEED MANUAL TRANSMISSION  
**Mileage:** 87,300  
**Drivetrain:** 4 Wheel Drive  
**Economy:** City 14 / Highway 18

### 2005 WRANGLER RUBICON SAHARA LJ

- VERY RARE ONLY 1,000 MADE! -

- THIS IS # 916 -

- CURRIE 4" SUSPENSION LIFT -

- CURRIE HEVY DUTY STEERING -

- CURRIE ANTI-ROCK FRONT SWAY BAR -

- BANKS SIDEWINDER TURBO KIT -

- DIABLO SPORT PROGRAMMER -

- 5 SPEED MANUAL AX15 TRANSMISSION  
CONVERSION -

- 2 PIECE HARD TOP W/ SLIDING REAR  
WINDOWS -

- NEW 15X10 METHOD DOUBLE STANDARD

**WHEELS -**

**- NEW 33X12.50X15 FALKEN WILDPEAK  
AT3 TIRES -**

**- STEEL FRONT & REAR BUMPERS -**

**- REAR TIRE CARRIER -**

**- 5 GALLON JERRY CAN -**

**- 8,000LB. WINCH -**

**- ROCK RAILS -**

**- TOM WOODS REAR DRIVESHAFT -**

**- LED HEADLIGHTS -**

**- HI LIFT TRAIL JACK -**

**- CB RADIO -**

**- LEGENDARY 4.0 INLINE 6 ENGINE -**

**- FACTORY DANA 44'S FRONT & REAR -**

**- FACTORY 4.10 GEARS -**

**- FACTORY LOCKERS -**

**- COLD A/C -**

**- CLEAN CARFAX HISTORY -**

**- TRADES WELCOME -**

**FOR FINANCING WE  
RECOMMEND <http://LIGHTSTREAM.COM>**

**- CALL OR TEXT NOLAN @ 904-382-  
7230 -**

**- FACETIME WALK AROUND VIDEO  
AVAILABLE -**

Lifted 2005 LJ Jeep Wrangler Rubicon Sahara Unlimited, only 1000 RUBICON SAHARA'S were built and this is number 916. This rare and collectible Jeep is in good condition. Khaki metallic with Khaki interior, Factory DANA 44s, Factory 4:10 gears, Factory Locking Differentials, Factory 4 wheel disc brakes, HELLA Fog Lights, Cold A/C, 4.0L inline six cylinder, the 4WD engages easily as well as the lockers. Thousands have been spent on this Jeep. Modifications include a Banks Sidewinder turbo kit 5 speed manual

5 speed manual  
AX15 transmission conversion, new Method  
Double Standard wheels, new 33X12.50X15  
Falken AT3 tires, Currie 4" suspension lift and  
heavy duty steering, Currie Antilock front sway  
bar, Tom Woods rear driveshaft, steel bumpers  
front and rear, 8K winch, rear tire carrier, 5  
gallon jerry can, LED headlights, Rock rails, 2  
piece hard top with sliding side windows, Hi-lift  
trail jack, CB radio and antenna. The  
Carfax history reports no accidents or issues.  
Just serviced and inspected, runs and drives  
well. Sold with 2 keys, books, mats, winch  
controller, programmer, and some of the  
receipts and records.

Call or text Nolan: 904-382-7230. We can also  
set up a time to do a FaceTime/video call  
while we walk-around the vehicle and you can  
see the vehicle and ask questions. ALL  
INVENTORY IS STORED INDOORS AND  
SHOWN BY APPOINTMENT. Trades accepted.  
All applicable sales tax, title, registration and a  
\$299 document fees apply.

**Also check us out at:**

[http://www.instagram.com/nolan\\_premierautosource/](http://www.instagram.com/nolan_premierautosource/)

<https://www.facebook.com/premierautosource/>

<http://youtube.com/premierautosource/>

KEYWORD SEARCH: Lifted Toyota Lifted Lexus GX470 GX460 GX 470 GX 460  
LX470 LX 470 LX570 LX 570 LX450 LX 450 FJ Cruiser Landcruiser Land Cruiser  
4Runner 4 Runner Four Runner SR5 TRD 4WD 4x4 AWD Overland Overlanding Off  
Road Lift Jeep Wrangler Rubicon Sahara Sport X LJ TJ JK JL Hard Top Soft Top  
Bronco Blazer

**Our Location :**



2005 Jeep Wrangler Rubicon Sahara

Premier Automotive Source LLC - - View this car on our website at [premierautomotivesource.com/6860013/ebrochure](http://premierautomotivesource.com/6860013/ebrochure)

## Installed Options

### Interior

- AM/FM stereo w/CD player-inc: changer control- (7) speakers w/subwoofer
- Air conditioning- Aux 12-volt pwr outlet- Black diamond plate sill guards
- Cargo tie down loops- Cloth reclining high-back front bucket seats
- Courtesy/underhood lamps- Easy access tip/slide driver seat- Fixed long mast antenna
- Folding rear seat- Front/rear seat/wheelhouse/cargo area carpeting
- Full length floor console- Glove box w/lock- Sport bar w/full padding- Tilt steering column
- Tip & slide passenger seat

### Exterior

- Folding soft top- Variable intermittent windshield wipers- Deep tint sunscreen glass
- Fog lamps- Fold away exterior mirrors- Front door light tinted windows
- Premium fender flares

### Safety

- AM/FM stereo w/CD player-inc: changer control- (7) speakers w/subwoofer
- Air conditioning- Aux 12-volt pwr outlet- Black diamond plate sill guards
- Cargo tie down loops- Cloth reclining high-back front bucket seats
- Courtesy/underhood lamps- Easy access tip/slide driver seat- Fixed long mast antenna
- Folding rear seat- Front/rear seat/wheelhouse/cargo area carpeting
- Full length floor console- Glove box w/lock- Sport bar w/full padding- Tilt steering column
- Tip & slide passenger seat

### Mechanical

- (5) 16" x 8" "Moab" aluminum wheels - Full size spare tire w/outside carrier
- Matching spare wheel- 117-amp alternator- 19 gallon fuel tank- 4-wheel pwr disc brakes
- 4.0L SMPI I6 "Power Tech" engine - 4.11 axle ratio- 4750# GVWR
- 4:1 Rocktrac HD part-time 4WD system- 600-CCA maintenance free battery
- Front/rear stabilizer bars- HD 6-speed manual transmission
- HD Dana 44/226MM rear axle- HD Dana M44/216MM front axle
- High pressure gas-charged shock absorbers- LT245/75R16 on/off road BSW tires
- Next generation engine controller- Pwr steering- Skid plates-inc: transfer case, fuel tank
- Tethered gas cap- Tow hooks-inc: (2) front, (1) rear - Tru-lok front/rear differential

## Option Packages

### Factory Installed Packages

---

4.0L SMPI I6 "POWER TECH" ENGINE

---

6-SPEED MANUAL TRANSMISSION

---

#### SAHARA EDITION GROUP

-inc: 16" x 8.0" "MOAB" graphite wheels, bright grille, front floor mats, leather wrapped steering wheel, speed control, Mopar sahara edition kit, premium cloth high-back bucket seats

---

Option Packages Total

\$1,400

DEALER POLICIES: Please review all photos carefully and ask questions prior to making an offer if there is anything you are not sure about. We welcome pre-sale inspections. Any descriptions we make of vehicles shall not be construed as any type of warranty. Our pictures are as thorough and precise as we can make them. Please be advised that this is not a brand new vehicle. It is a pre-owned vehicle and has previously been driven, so therefore with respect to the miles there will most likely be average wear and tear, such as minor scratches, minor dings, or small rock chips. We do our best to disclose any substantial blemishes in our photos and descriptions. If our vehicles include manuals, service records or extra sets of keys, it will be shown in the pictures and noted in the description. The advertised mileage is a round number and may vary slightly from the exact mileage due to demo and test drives. Once a vehicle leaves our premises, no refunds, credits, or adjustments, will be issued. All Vehicles are conveyed AS-IS. Dealer neither makes nor implies any warranty on this or any vehicle. Any dispute that may arise shall take place under the laws of the state of Florida, in the state of Florida and all sales are subject to binding Arbitration under the rules of the American Arbitration Association. All applicable sales tax, tag and title fees apply. When we receive a vehicle into our inventory, sometimes the title is being held by a bank or lender as collateral for the previous loan or payoff. Occasionally there is a delay in receiving the title from these lending institutions after payoff of the loan for up to two weeks. While we usually have the titles in our possession, there are instances where we may be waiting for the title to arrive. We guarantee clean titles on our vehicles unless otherwise noted. In some cases we may hold titles until cashiers checks or other funds are cleared or unless other arrangements were agreed upon. Titles will be sent via Fedex for proper tracking. Thank you for your patience and understanding.

Premier Automotive Source LLC

[premierautomotivesource.com](http://premierautomotivesource.com)

3075 Leon Rd

Jacksonville, FL 32246

© 2024 AutoRevo - All rights reserved. - Powered by AutoRevo