



2005 Chevrolet Corvette

Website Price \$17,995

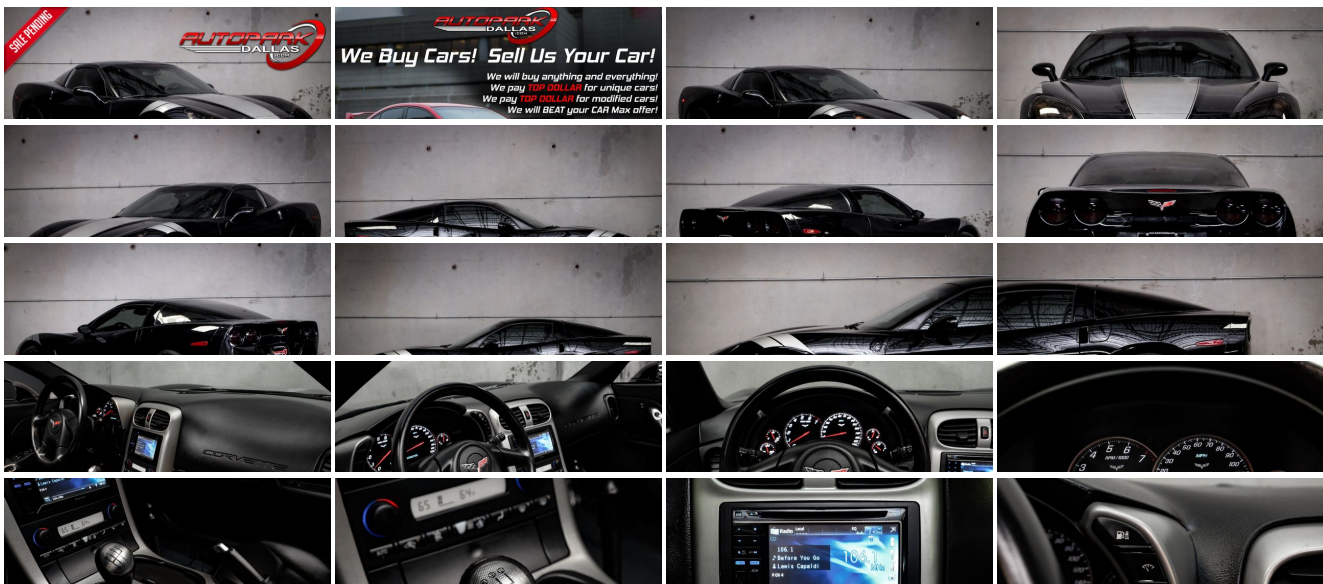
View this vehicle on our website at autoparkdallas.com



(214) 945-2601

2061 S Stemmons Fwy , Lewisville, TX 75067

- Photos
- Details
- Contact



Specifications:

Year:	2005
VIN:	1G1YY24U055125538
Make:	Chevrolet
Model/Trim:	Corvette
Condition:	Pre-Owned
Body:	Coupe
Exterior:	Black
Engine:	ENGINE, 6.0L LS2 V8 SFI
Interior:	Ebony Leather
Transmission:	TRANSMISSION, 6-SPEED MANUAL, SHORT-THROW
Mileage:	93,598
Drivetrain:	Rear Wheel Drive
Economy:	City 18 / Highway 26

Vehicle Description

AutoPark Dallas is excited to offer you this 2005 Chevrolet Corvette for sale! There is not a soul that does not know the Corvette, with its signature look and being a low-profile sport car. These bald eagle screaming U.S. born beauties are a thrill to drive and always stand out in any crowded car meet or parking lot. Our Corvette here APD was subtly modified with a bit of cosmetic love that really makes this Chevy speak and the modified exhaust amplifies that voice! If you're looking for a beautiful American Sports Car, then come swing by to check out this Corvette parked in our indoor 16,000 Sq Ft Showroom located in Dallas , Texas amongst our inventory of 100+ other Performance / Modified and Luxury cars!

2005 Chevrolet Corvette

* Clean CarFax !*

* 2 Fobs + 1 Key !*

* 1SA Preferred Equipment Group !*

MODIFICATIONS!

Custom Gloss Black C6 Wheels

Modified Exhaust System

Pioneer Stereo

Blacked-Out Tail Light Covers

Windows Tinted

STOCK!

Solid Black Exterior

Machine Silver Metallic Stripes

Ebony Black Leather Interior

Dual Climate Controls

BOSE Premium Audio System

Cruise Control

Comfort Access Keyless Entry

Daytime Running Lights

6.0L LS2 V8 SFI Engine
6-Speed Manual Transmission
Rear Wheel Drive
Professionally Detailed!
Well Maintained!
*** Free CarFax Report !***
AND SO MUCH MORE!!!

Financing is available!

Check out our Payment Calculator to get an estimate on your monthly payments!

OR

Get pre-approved in no time by filling out a credit application on the 'Finance' section of our website!

We also offer MANY different Extended Warranty options!

Check out our Google Reviews by *Clicking* this LINK!

Referrals and Testimonials is what our business is built on!

The team here at AutoPark Dallas, is dedicated to offering a level of customer service not usually found in the automobile industry. Thanks to years of extensive car buying / selling experience, we pursue quality used and new vehicles that are hand-picked from factory sources. Our love for automobiles and dislike of traditional dealership tactics is what motivates us to provide the service we do! The pride we take in continuing this service long after the vehicle has been delivered is what we strive for! Looking forward to making every effort to see that our customer is completely satisfied and a friend for life!

Pre-purchase inspections are always welcomed!

We also offer airport pick-up, competitive financing options, free CarFax Reports, Car Shipping nationwide, Extended Warranty plans, and so much more!

Trade-In(s) are always accepted or sell us your used car (MODIFIED OR NOT)! Please call or text for more information about Trade-Ins or selling your car to us @ (214) 945-2601!

#(214) 945-2601

Call or Text *Anytime!*

Se habla Español

WE BUY CARS!

WWW.AUTOPARKDALLAS.COM

Installed Options

Interior

Option Packages

Factory Installed Packages

- Air conditioning, dual-zone, automatic, includes individual climate settings for driver and right front passenger, automatic climate control and outside temperature display
- Air filtration, includes pollen filter - Antenna, integral, hidden
- Console, floor, lockable, includes 2 covered cupholders, ashtray with cigar lighter, auxiliary power outlet and CD storage
- Cruise control, electronic with set and resume speed - Defogger, rear-window, electric
- Door locks, power, programmable, includes lockout protection- Floor mats, carpeted
- Hatch release, push button open, includes power hatch pull-down
- Ignition, keyless, engaged with push button start
- Instrumentation, analog, electronic, includes Driver Information Center with 2 line display
- Keyless Access, with push-button start, includes 2 remote transmitters which enable automatic door unlock and open by touching door switch
- Lighting, interior, courtesy, cargo and glovebox
- Mirror, inside rearview, manual day/night, includes dual reading lights
- Oil life monitoring system- Seat adjuster, power, driver 6-way
- Seats, front bucket with leather seating surfaces, includes back angle adjustment
- Sound system, ETR AM/FM stereo with CD player and MP3 playback, includes Radio Data System, seek-and-scan, digital clock, auto-tone control, automatic volume, Theftlock and (U66) Sound system feature, 7-speaker system
- Steering column, manual, Tilt-Wheel- Steering wheel, leather-wrapped
- Storage, includes lockable glovebox, center console and 2 rear compartments with covers
- Theft-deterrent system, push button start, immobilizer and audible visual alarm
- Tire Pressure Monitor System, air pressure sensors in each tire pressure display in Driver Information Center
- Visors, illuminated vanity mirrors, driver and front passenger
- Windows, power, includes driver and passenger express-down

Exterior

- Daytime running lamps- Fog lamps, front, integral in fascia- Glass, Solar-Ray light tinted
- Headlamps, bi-functional, Xenon, high-intensity discharge, includes automatic exterior lamp control
- Mirrors, outside rearview, power, heated, body-color
- Roof panel, removable, 1-piece, body-color- Wipers, intermittent, front

Safety

- Air conditioning, dual-zone, automatic, includes individual climate settings for driver and right front passenger, automatic climate control and outside temperature display
- Air filtration, includes pollen filter - Antenna, integral, hidden
- Console, floor, lockable, includes 2 covered cupholders, ashtray with cigar lighter, auxiliary power outlet and CD storage
- Cruise control, electronic with set and resume speed - Defogger, rear-window, electric
- Door locks, power, programmable, includes lockout protection- Floor mats, carpeted
- Hatch release, push button open, includes power hatch pull-down
- Ignition, keyless, engaged with push button start
- Instrumentation, analog, electronic, includes Driver Information Center with 2 line display
- Keyless Access, with push-button start, includes 2 remote transmitters which enable automatic door unlock and open by touching door switch
- Lighting, interior, courtesy, cargo and glovebox
- Mirror, inside rearview, manual day/night, includes dual reading lights
- Oil life monitoring system- Seat adjuster, power, driver 6-way
- Seats, front bucket with leather seating surfaces, includes back angle adjustment
- Sound system, ETR AM/FM stereo with CD player and MP3 playback, includes Radio Data System, seek-and-scan, digital clock, auto-tone control, automatic volume, Theftlock and (U66) Sound system feature, 7-speaker system
- Steering column, manual, Tilt-Wheel- Steering wheel, leather-wrapped
- Storage, includes lockable glovebox, center console and 2 rear compartments with covers
- Theft-deterrent system, push button start, immobilizer and audible visual alarm
- Tire Pressure Monitor System, air pressure sensors in each tire pressure display in Driver Information Center
- Visors, illuminated vanity mirrors, driver and front passenger
- Windows, power, includes driver and passenger express-down

Mechanical

- Wheels, 5-spoke painted aluminum, 18" x 8.5" (45.7 cm x 21.6 cm), front and 19" x 10.0" (48.3 cm x 25.4 cm), rear
- Active handling, improves traction and enhances vehicle stability
- Axle, 3.42 ratio, limited slip (Included and only available with (MN6) Transmission, 6-speed manual.)
- Brakes, 4-wheel antilock, 4-wheel disc
- Engine access, rear opening hood, includes underhood lamp
- Engine, 6.0L LS2 V8 SFI (400 HP [298.3 kW] @ 6000 rpm, 400 lb.-ft. [542.8 N-m] @ 4400 rpm)
- Exhaust, aluminized stainless-steel with polished 3" stainless-steel tips

ENGINE, 6.0L LS2 V8 SFI

(400 HP [298.3 kW] @ 6000 rpm, 400 lb.-ft. [542.8 N-m] @ 4400 rpm)

TRANSMISSION, 6-SPEED MANUAL, SHORT-THROW

(Includes (GU6) Axle, 3.42 ratio)

AIR BAGS, FRONTAL AND SIDE IMPACT, DRIVER AND FRONT PASSENGER

(Always use safety belts and proper child restraints, even with air bags. See the Owners Manual for more safety information.)

LICENSE PLATE BRACKET, FRONT

AXLE, 3.42 RATIO, LIMITED SLIP

EMISSIONS, FEDERAL REQUIREMENTS

SOLID PAINT

PREFERRED EQUIPMENT GROUP

includes (AJ7) Air bags, frontal and side impact, driver and front passenger, Cargo convenience net, in rear compartment area, (D42) Luggage shade, (AG2) Seat adjuster, power, front passenger 6-way, (AQ9) Seats, front Sport bucket with perforated leather seating surfaces

\$1,405

HIGHWEAR NUANCE LEATHER SEAT TRIM

SEATS, FRONT SPORT BUCKET WITH PERFORATED LEATHER SEATING SURFACES

includes back angle adjustment, adjustable lumbar and side bolsters

Option Packages Total

\$1,405

- Fuel capacity, approximate, 18 gallon (68 liters) - Rear wheel drive
- Steering, power, speed-sensitive, rack and pinion
- Suspension, 4-wheel independent, includes transverse fiberglass leaf springs
- Tires, front P245/40ZR18, extended mobility, Eagle F1
- Tires, rear P285/35ZR19, extended mobility, Eagle F1 - Traction control, all-speed
- Transmission, 6-speed manual, short-throw (Includes (GU6) Axle, 3.42 ratio.)

AUTOPARK

Dallas

Auto Park Dallas

View this car on our website at autoparkdallas.com/6858659

Website: autoparkdallas.com

Phone: (214) 945-2601

Map: 2061 S Stemmons Fwy, Lewisville, TX 75067

