

2011 Ram Crew Dakota Bighorn/Lonestar

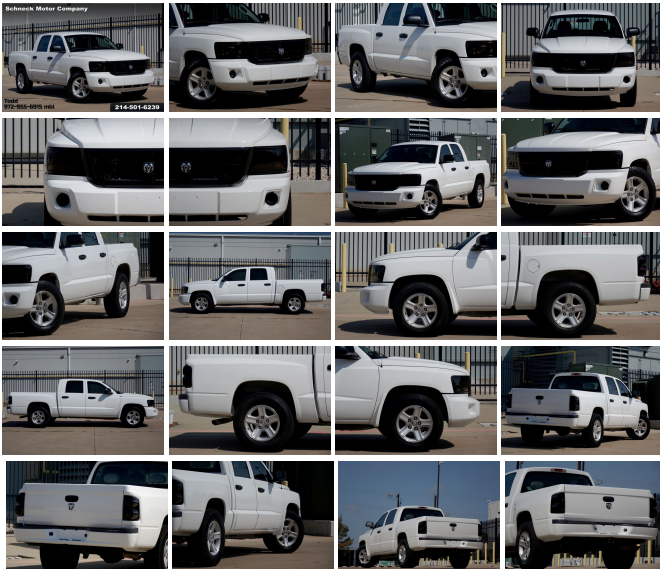
View this car on our website at schneckmotorcompany.com/6858020/ebrochure



Cash Price **\$10,800**

Specifications:

Year:	2011
VIN:	1D7RE3GP0BS650876
Make:	Ram Crew
Stock:	650876
Model/Trim:	Dakota Bighorn/Lonestar
Condition:	Pre-Owned
Body:	Pickup Truck
Exterior:	Bright White
Engine:	4.7L FFV V8 ENGINE
Interior:	Gray Cloth
Mileage:	104,178
Drivetrain:	Rear Wheel Drive
Economy:	City 14 / Highway 19



2011 Ram Crew Dakota Bighorn/Lonestar

Schneck Motor Company - 214-501-6239 - View this car on our website at schneckmotorcompany.com/6858020/ebrochure

Our Location :



2011 Ram Crew Dakota Bighorn/Lonestar

Schneck Motor Company - 214-501-6239 - View this car on our website at schneckmotorcompany.com/6858020/ebrochure

Installed Options

Interior

- 120 MPH speedometer- 12V pwr outlet in instrument panel
- 12V pwr point in floor console- 60/40 split folding rear bench seat - Air conditioning
- Crate 'N Go flip-up rear seat cushions w/storage - Door ajar warning lamp
- Driver assist handle- Driver side sun visor- Floor console- Front floor carpeting
- Front/rear floor mats- Headlamps on warning chimes- Instrument cluster w/tachometer
- Instrument panel black bezel- Key in ignition & seat belt warning buzzer - Keyless entry
- Map/dome reading lamps- Passenger assist handle- Passenger side sun visor w/mirror
- Premium cloth front bucket seats - Premium vinyl door trim panels w/map pocket
- Pwr accessory delay- Pwr locks- Pwr windows w/driver side one-touch- Rear dome lamp
- Speed control- Stain & odor resistant anti-static seat fabric- Tilt steering column
- Tip start

Exterior

- 17" x 8" aluminum wheels -inc 17" x 7.5" steel spare wheel - Accent color grille
- Black headlamp bezels w/chrome trim- Body color front fascia- Body color rear bumper
- Cargo lamps- Deep tint sunscreen glass- Dual position tailgate- Fog lamps
- Full size spare tire w/17" x 7.5" steel wheel & winch-type carrier
- P265/65R17 on/off road BSW tires- Pwr mirrors- Tinted glass windows
- Tinted windshield glass- Variable intermittent windshield wipers

Safety

- 120 MPH speedometer- 12V pwr outlet in instrument panel
- 12V pwr point in floor console- 60/40 split folding rear bench seat - Air conditioning
- Crate 'N Go flip-up rear seat cushions w/storage - Door ajar warning lamp
- Driver assist handle- Driver side sun visor- Floor console- Front floor carpeting
- Front/rear floor mats- Headlamps on warning chimes- Instrument cluster w/tachometer
- Instrument panel black bezel- Key in ignition & seat belt warning buzzer - Keyless entry
- Map/dome reading lamps- Passenger assist handle- Passenger side sun visor w/mirror
- Premium cloth front bucket seats - Premium vinyl door trim panels w/map pocket
- Pwr accessory delay- Pwr locks- Pwr windows w/driver side one-touch- Rear dome lamp
- Speed control- Stain & odor resistant anti-static seat fabric- Tilt steering column
- Tip start

Mechanical

- 136-amp alternator- 3.7L V6 engine- 3.92 axle ratio
- 4-speed automatic VLP transmission (REQ: EKG Engine) - 5.3' pickup box
- 600-amp maintenance free battery- 6010# GVWR- Battery run down protection
- Corporate 8.25 rear axle- Front stabilizer bar- Front vented disc & rear drum brakes
- HD front shock absorbers- HD rear shock absorbers- HD suspension
- Pwr rack & pinion steering- Rear wheel drive- Scissor type jack
- Trailer tow wiring w/4-pin connector

Option Packages

Factory Installed Packages

-
4.7L FFV V8 ENGINE
\$985

-
Option Packages Total
\$985

Schneck Motor Company
schneckmotorcompany.com
214-501-6239

1200 Commerce Dr.
Plano, TX 75093

© 2021 AutoRevo - All rights reserved. - Powered by AutoRevo