



2008 Mercedes-Benz CLK63 AMG Black Series

Website Price \$59,995

View this vehicle on our website at autoparkdallas.com



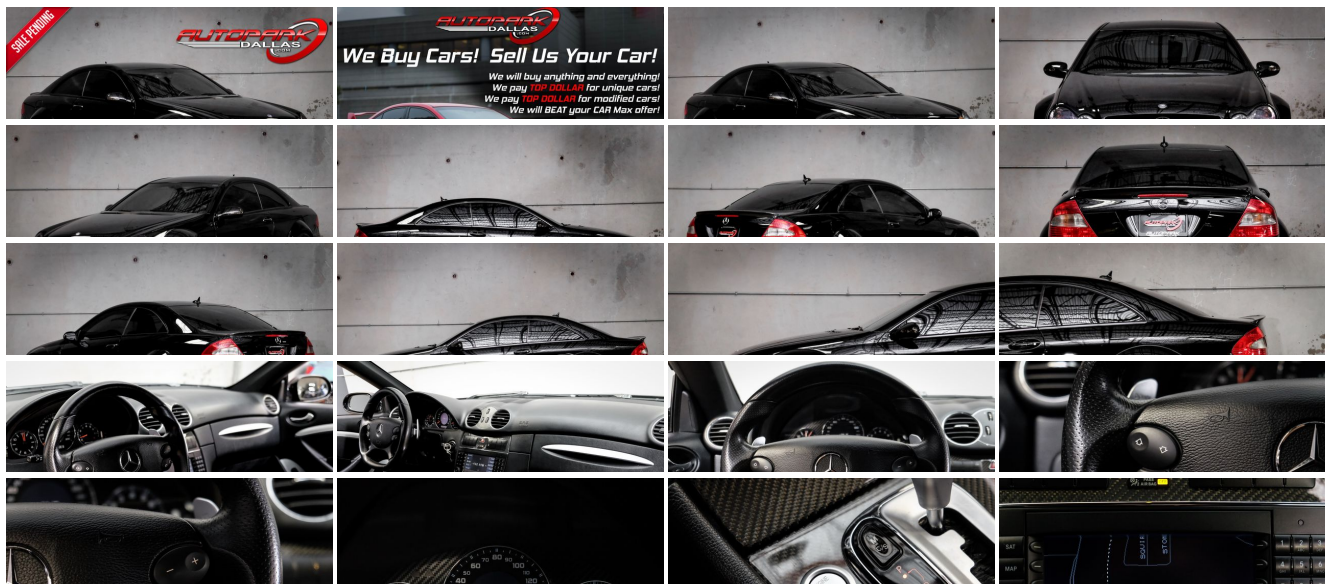
(214) 945-2601

2061 S Stemmons Fwy , Lewisville, TX 75067

Photos

Details

Contact



Specifications:

Year:	2008
VIN:	WDBTJ77HX8F234183
Make:	Mercedes-Benz
Model/Trim:	CLK63 AMG Black Series
Condition:	Pre-Owned
Body:	Coupe
Exterior:	Black
Engine:	AMG 6.3L DOHC 32-valve V8 engine
Interior:	Black Leather
Transmission:	7-speed driver-adaptive electronically controlled automatic transmission w/AMG SpeedShift
Mileage:	65,276
Drivetrain:	Rear Wheel Drive
Economy:	City 12 / Highway 19

Vehicle Description

AutoPark Dallas is thrilled to offer you this 1 of 500 Worldwide Made 2008 Mercedes-Benz CLK63 AMG Black Series for sale! Its that time again that we at APD have a vehicle were proud to have in our hands and excited to be able to offer our customers a once in a lifetime chance at German Engineering perfected! The CLK63 AMG Black Series was a 1 time spin-off only offered in 2008 that was manufactured a total of 500 units worldwide, but only 350 of those were designated to the United States! The Black Series is built to be essentially be a super coupe that is capable of competing in Formula 1 races thanks to the re-tuned suspension, enlarged intake ducts, reprogrammed software, and a low-restriction sport exhaust! For those that desire the track or a crazy unique collector car should NOT hesitate to swing by and check out the CLK63 AMG Black Series we have parked in our indoor 16,000 Sq Ft Showroom located in Dallas , Texas amongst our inventory of 100+ other Performance / Modified and Luxury cars!

2008 Mercedes-Benz CLK63 AMG Black Series

*** 1 out of 500 Worldwide !***

* Clean CarFax !*

MODIFICATIONS!

Carbon Fiber Front Lip Spoiler

Custom Gloss Black CLK63 AMG Wheels

Custom Lime Green Brake Calipers

Smoke Tinted Headlights

Window Tint

STOCK!

Solid Black Exterior

Black Nappa Leather Interior

Navigation System

Push Button Start

Comfort Access Keyless Entry

Dual Climate Control

Manual Mode w/ Paddle Shifters

Cruise Control

Harmon / Kardon LOGIC7 Sound System

Steering Wheel Mounted Controls

Daytime Running Lights

Limited-Slip Rear Differential Lock

Selective Drive Modes

AMG 6.3L DOHC 32-Valve V8 Engine

7-Speed Automatic Transmission

Rear Wheel Drive

Professionally Detailed!

Well Maintained!

* Free CarFax Report !*

AND SO MUCH MORE!!!

Financing is available!

Check out our Payment Calculator to get an estimate on your monthly payments!

OR

Get pre-approved in no time by filling out a credit application on the 'Finance' section of our website!

Check out our Google Reviews by *Clicking* this LINK!

Referrals and Testimonials is what our business is built on!

The team here at AutoPark Dallas, is dedicated to offering a level of customer service not usually found in the automobile industry. Thanks to years of extensive car buying / selling experience, we pursue quality used and new vehicles that are hand-picked from factory sources. Our love for automobiles and dislike of traditional dealership tactics is what motivates us to provide the service we do! The pride we take in continuing this service long after the vehicle has been delivered is what we strive for! Looking forward to making every effort to see that our customer is completely satisfied and a friend for life!

Pre-purchase inspections are always welcomed!

We also offer airport pick-up, competitive financing options, free CarFax Reports, Car Shipping nationwide, and so much more!

Trade-In(s) are always accepted or sell us your used car (MODIFIED OR NOT)! Please call or text for more information about Trade-Ins or selling your car to us @ (214) 945-2601!

#(214) 945-2601

Call or Text **Anytime!**

Se habla Español

WE BUY CARS!

WWW.AUTOPARKDALLAS.COM

Installed Options

Interior

- 10-way pwr heated AMG front sport bucket seats-inc: multi-contour driver seat w/pneumatically adjustable side bolsters, dual lumbar & thigh supports, 3-position memory
- 60/40-split-folding rear seatbacks & flip forward seat cushions
- AM/FM/Weatherband radio w/6-disc CD changer- AMG leather-trimmed shift knob
- Anti-theft alarm system- Auto-dimming rearview mirror
- Automatic dual-zone climate control-inc: dual digital temp controls, electrostatic dust, pollen & active charcoal filters, sun, humidity & dew point sensors, tunnel mode w/1-touch closing of all windows
- Carbon fiber trim- Cruise control
- DTM-style AMG leather-wrapped pwr 4-way tilt/telescopic steering wheel-inc: F1 inspired aluminum shift paddles, audio & multi-function display controls, memory
- DVD navigation system w/COMAND
- Dual adjustable individual retractable rear head restraints
- Harmon/kardon LOGIC7 digital surround system-inc: (12) speakers, 320-watt 7.1 channel amplifier, digital dynamic volume control system
- Integrated garage door opener- Locator lighting
- Mercedes-Benz Maintenance System Plus display-inc: distance remaining to next maintenance, type of service due, reminders
- Multi-function displays in instrument cluster-inc: trip computer, oil level check, digital speedometer, reminder & malfunction messages, driver- programmable settings, audio status, exterior temp gauge
- Nappa leather seats- Night security illumination
- Pwr automatic height adjustable front head restraints w/manual adjustable fore-aft
- Pwr windows w/front 1-touch express up/down
- Rear window defroster w/auto-shutoff based on time, driving speed & exterior temp
- Rubber-studded brushed stainless-steel pedals
- Sirius satellite radio w/(6) month subscription
- SmartKey infrared remote-inc: trunk open, windows open/close, panic alarm, fuel filler door, selective unlock, auto-lock
- Tele Aid global positioning system (GPS) satellite system-inc: stolen vehicle recovery, remote door unlock service, automatic alarm & collision notification
- Tire pressure monitoring system

Exterior

- Bi-xenon headlamps w/active curve illumination
- Carbon fiber lower rear diffuser application- Carbon fiber rear spoiler
- Carbon fiber reinforced fender flares & rear apron - Carbon fiber reinforced front apron
- Programmable daytime running lamps w/auto override
- Pwr heated mirrors w/auto-dimming LH mirror, LH mirror memory
- Single rear red foglamp
- Variable intermittent rain-sensing windshield wipers w/heated windshield washer reservoir & fluid lines

Safety

- 10-way pwr heated AMG front sport bucket seats-inc: multi-contour driver seat w/pneumatically adjustable side bolsters, dual lumbar & thigh supports, 3-position memory
- 60/40-split-folding rear seatbacks & flip forward seat cushions
- AM/FM/Weatherband radio w/6-disc CD changer- AMG leather-trimmed shift knob
- Anti-theft alarm system- Auto-dimming rearview mirror
- Automatic dual-zone climate control-inc: dual digital temp controls, electrostatic dust, pollen & active charcoal filters, sun, humidity & dew point sensors, tunnel mode w/1-touch closing of all windows
- Carbon fiber trim- Cruise control
- DTM-style AMG leather-wrapped pwr 4-way tilt/telescopic steering wheel-inc: F1 inspired aluminum shift paddles, audio & multi-function display controls, memory
- DVD navigation system w/COMAND
- Dual adjustable individual retractable rear head restraints
- Harmon/kardon LOGIC7 digital surround system-inc: (12) speakers, 320-watt 7.1 channel amplifier, digital dynamic volume control system
- Integrated garage door opener- Locator lighting
- Mercedes-Benz Maintenance System Plus display-inc: distance remaining to next maintenance, type of service due, reminders
- Multi-function displays in instrument cluster-inc: trip computer, oil level check, digital speedometer, reminder & malfunction messages, driver- programmable settings, audio status, exterior temp gauge
- Nappa leather seats- Night security illumination

Option Packages

Factory Installed Packages

STANDARD PAINT

NAPPA LEATHER INTERIOR

leather seats - night security mirrors

- Pwr automatic height adjustable front head restraints w/manual adjustable fore-aft
- Pwr windows w/front 1-touch express up/down
- Rear window defroster w/auto-shutoff based on time, driving speed & exterior temp
- Rubber-studded brushed stainless-steel pedals
- Sirius satellite radio w/(6) month subscription
- SmartKey infrared remote-inc: trunk open, windows open/close, panic alarm, fuel filler door, selective unlock, auto-lock
- Tele Aid global positioning system (GPS) satellite system-inc: stolen vehicle recovery, remote door unlock service, automatic alarm & collision notification
- Tire pressure monitoring system

Mechanical

- 19" x 9.0" front AMG forged aluminum wheels
- 19" x 9.5" rear AMG forged aluminum wheels
- 7-speed driver-adaptive electronically controlled automatic transmission w/AMG SpeedShift
- AMG 6.3L DOHC 32-valve V8 engine- AMG front/rear stabilizer bars
- AMG sport suspension- Anti-lock braking system (ABS) w/brake assist system
- Cross-drilled composite brake rotors- High performance steering oil cooler
- Independent 3-link front suspension-inc: AMG coil springs & shock absorbers, anti-dive geometry
- Independent 5-arm multi-link rear suspension-inc: AMG coil springs & shock absorbers, anti-squat & alignment control
- Limited-slip rear differential lock w/active oil cooler
- Low-backpressure AMG sport exhaust system w/(4) chrome tips
- Modified electronic stability program (ESP)
- P265/30R19 front high performance Pirelli PZero Corsa tires
- P285/30R19 rear high performance Pirelli PZero Corsa tires
- Pwr AMG 6-piston perforated & ventilated front & 4-piston ventilated rear disc brakes
- Rear wheel drive- Vehicle-speed-sensitive pwr rack & pinion steering



Auto Park Dallas

View this car on our website at autoparkdallas.com/6856336

Website: autoparkdallas.com

Phone: (214) 945-2601

Map: [2061 S Stemmons Fwy, Lewisville, TX 75067](#)

