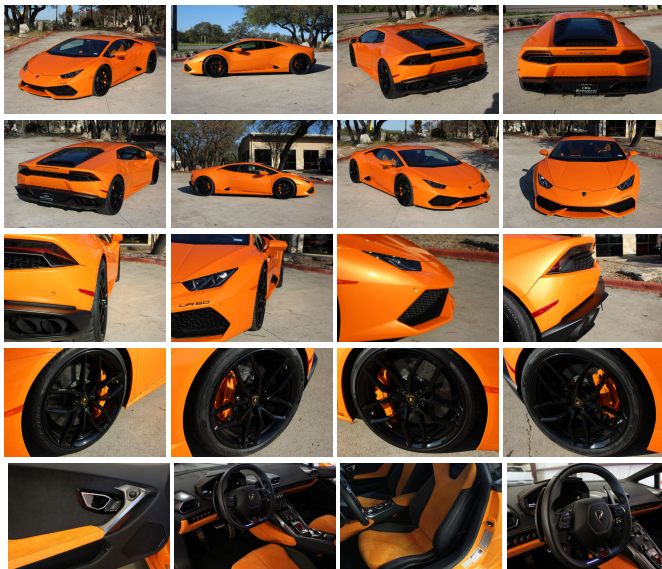


2015 Lamborghini Huracan LP-610 4

View this car on our website at elitemotorsports.com/6854754/ebrochure



Our Price **\$0**

Specifications:

Year:	2015
VIN:	ZHWUC1ZF3FLA03398
Make:	Lamborghini
Model/Trim:	Huracan LP-610 4
Condition:	Pre-Owned
Body:	Coupe
Exterior:	Arancio Borealis 4-Layer
Engine:	Engine: 5.2L 4V DOHC V10 -inc: Mid-mounted aluminum alloy
Interior:	Arancio Leonis/Nero Ade Leather
Transmission:	7 Speed Dual Clutch automatic transmission w/ auto shift
Mileage:	2,080
Drivetrain:	All Wheel Drive
Economy:	City 14 / Highway 20

2015 Lamborghini Huracan LP610-4

Underground Racing Stage 3 twin turbo pkg

- 1150 WHP on 93 octane/ 1350 WHP on race gas

5.2L DOHC V-10 mid mounted engine

7 speed Doppia Frizione Dual clutch gearbox

All wheel drive

Launch Control

Dynamic Steering

20" alloy wheels

Arancio Borealis exterior

Front and lower rocker clear paint protection film

Arancio Leonis/ Nero Ade Bicolor Sportivo interior

Navigation

Front and rear park sensors with back up camera

KW adjustable coil over suspension

Wheel spacers

Carbon Ceramic brakes w/ orange painted calipers

2080 miles and only 200 miles since the Underground build

For questions, contact 512-452-9068

Our Location :



2015 Lamborghini Huracan LP-610 4

Elite Motorsports - 512-452-9068 - View this car on our website at elitemotorsports.com/6854754/ebrochure

Installed Options

Interior

- 1 12V DC Power Outlet
- 4-Way Power Driver Seat -inc: Power Recline and Fore/Aft Movement
- 4-Way Power Passenger Seat -inc: Power Recline and Fore/Aft Movement - Air Filtration
- Cargo Features -inc: Spare Tire Mobility Kit- Cargo Space Lights- Carpet Floor Trim
- Day-Night Rearview Mirror- Digital/Analog Display
- Driver And Passenger Visor Vanity Mirrors- Driver Foot Rest
- Dual Zone Front Automatic Air Conditioning- Engine Immobilizer
- FOB Controls -inc: Cargo Access- Fade-To-Off Interior Lighting
- Fixed Front Head Restraints- Fixed Rear Windows- Front Map Lights
- Full Carpet Floor Covering -inc: Carpet Front Floor Mats - Full Cloth Headliner
- Full Floor Console w/Storage and 1 12V DC Power Outlet
- Gauges -inc: Speedometer, Odometer, Voltmeter, Oil Pressure, Engine Coolant Temp, Tachometer, Oil Temperature, Trip Odometer and Trip Computer
- HVAC -inc: Residual Heat Recirculation - Illuminated Locking Glove Box
- Interior Concealed Storage, Driver And Passenger Door Bins
- Interior Trim -inc: Aluminum Instrument Panel Insert, Aluminum Door Panel Insert, Leather/Aluminum Console Insert, Aluminum Interior Accents and Leather Upholstered Dashboard
- Leather Door Trim Insert- Leather Seat Trim- Manual Tilt/Telescoping Steering Column
- Outside Temp Gauge- Perimeter Alarm
- Power 1st Row Windows w/Driver And Passenger 1-Touch Up/Down
- Power Door Locks w/Autolock Feature- Redundant Digital Speedometer
- Remote Keyless Entry w/Integrated Key Transmitter, 2 Door Curb/Courtesy and Illuminated Entry
- Remote Releases -Inc: Power Cargo Access and Power Fuel
- Sport Leather/Aluminum Steering Wheel- Systems Monitor- Trip Computer
- Unicolor Smooth Leather Sport Seats- Valet Function

Exterior

- Aero-Composite Led Low/High Beam Daytime Running Headlamps w/Washer
- Black Grille- Black Side Windows Trim- Body-Colored Door Handles
- Body-Colored Front Bumper
- Body-Colored Power Heated Auto Dimming Side Mirrors w/Power Folding
- Body-Colored Rear Bumper Clearcoat Paint Composite/Aluminum Panels
- Fixed Rear Window- LED Brakelights- Light Tinted Glass- Rocker Panel Extensions
- Spare Tire Mobility Kit- Tires: P245/30ZR19 Front & P305/30ZR19 Rear Pirelli P Zero
- Trunk Rear Cargo Access- Variable Intermittent Wipers
- Wheels: 20" x 8.5" Front & 20" x 11" Rear Giano Silver Alloy

Safety

- 1 12V DC Power Outlet
- 4-Way Power Driver Seat -inc: Power Recline and Fore/Aft Movement
- 4-Way Power Passenger Seat -inc: Power Recline and Fore/Aft Movement - Air Filtration
- Cargo Features -inc: Spare Tire Mobility Kit- Cargo Space Lights- Carpet Floor Trim
- Day-Night Rearview Mirror- Digital/Analog Display
- Driver And Passenger Visor Vanity Mirrors- Driver Foot Rest
- Dual Zone Front Automatic Air Conditioning- Engine Immobilizer
- FOB Controls -inc: Cargo Access- Fade-To-Off Interior Lighting
- Fixed Front Head Restraints- Fixed Rear Windows- Front Map Lights
- Full Carpet Floor Covering -inc: Carpet Front Floor Mats - Full Cloth Headliner
- Full Floor Console w/Storage and 1 12V DC Power Outlet
- Gauges -inc: Speedometer, Odometer, Voltmeter, Oil Pressure, Engine Coolant Temp, Tachometer, Oil Temperature, Trip Odometer and Trip Computer
- HVAC -inc: Residual Heat Recirculation- Illuminated Locking Glove Box
- Interior Concealed Storage, Driver And Passenger Door Bins
- Interior Trim -inc: Aluminum Instrument Panel Insert, Aluminum Door Panel Insert, Leather/Aluminum Console Insert, Aluminum Interior Accents and Leather Upholstered Dashboard
- Leather Door Trim Insert- Leather Seat Trim- Manual Tilt/Telescoping Steering Column
- Outside Temp Gauge- Perimeter Alarm
- Power 1st Row Windows w/Driver And Passenger 1-Touch Up/Down
- Power Door Locks w/Autolock Feature- Redundant Digital Speedometer
- Remote Keyless Entry w/Integrated Key Transmitter, 2 Door Curb/Courtesy and Illuminated Entry
- Remote Releases -Inc: Power Cargo Access and Power Fuel
- Sport Leather/Aluminum Steering Wheel- Systems Monitor- Trip Computer
- Unicolor Smooth Leather Sport Seats- Valet Function

Mechanical

- 21.1 Gal. Fuel Tank
- 4-Wheel Disc Brakes w/4-Wheel ABS, Front And Rear Vented Discs, Ceramic Discs and Electric Parking Brake
- Battery w/Run Down Protection- Double Wishbone Front Suspension w/Coil Springs
- Double Wishbone Rear Suspension w/Coil Springs
- Dual Stainless Steel Exhaust w/Chrome Tailpipe Finisher- Electric Power-Assist Steering
- Engine Auto Stop-Start Feature- Engine Oil Cooler
- Engine: 5.2L 4V DOHC V10 -inc: Mid-mounted aluminum alloy
- Front And Rear Anti-Roll Bars- Full-Time All-Wheel- Mechanical Limited Slip Differential
- Premium Shock Absorbers
- Transmission w/Driver Selectable Mode, Sequential Shift Control w/Steering Wheel Controls and Oil Cooler
- Transmission: Lamborghini Doppia Frizione 7-Speed Dual Clutch Gearbox

Option Packages

Factory Installed Packages

- _____
 ANTI-STONE CHIPPING FILM
 \$3,200

- _____
 BICOLOR ELEGANT INTERIOR
 -inc: Nine different dedicated
 contrasting colors for the
 following parts: lower
 dashboard, door panels inner
 trim, seat centers, center
 console lower sides, and lid of
 storage bin
 \$1,400

BRANDING PACKAGE
-inc: badging on dash, headrests and wheels \$1,000

FRONT & REAR PARKING SENSORS AND REAR VIEW CAMERA
-inc: Acoustic and visual park assist system for the front and rear area of the car, It shows camera image of area behind the vehicle shown on the 12.3 inch TFT color instrument cluster, w/parking line, The rear view camera is integrated discreetly in the rear bumper \$3,900

FULL ELECTRIC ADJUSTABLE & HEATED SEATS
-inc: adjustment for height, forwards and backwards position, backrest angle and seat heating \$2,800

LAMBORGHINI DYNAMIC STEERING
-inc: Improves comfort and handling by dynamically regulating steering ratio according to the driving situation, It can change the steering behavior depending on the speed and the setting of the dynamic mode selector, The system adapts to the car's dynamics continuously, At low speed or in a racing mode it supports the driver w/a very direct steering, while at high speed the steering becomes more indirect in order to ensure a perfect stability constantly \$2,400

LIFTING SYSTEM
-inc: Raises the front axle of the car of 30 mm/1.18 inches, It can be activated through a switch in the front center console and lowers automatically at 70kph/44 mph \$3,500

NAVIGATION SYSTEM
-inc: Hard disk navigation w/topographical map displays places of interest and town models in 3D; it is completely integrated in the 12.3 inch TFT color display instrument cluster, The system offers 3 alternative routes, w/the ability to scroll along the selected route and to manoeuvre within the map, It uses 7-digit postcode recognition and includes split-screen mode for route information, dynamic route guidance (TMC), intersection zoom function, motorway exits and lane recommendations in Driver's Information System (DIS) \$3,200

ORANGE PAINTED BRAKE CALIPERS
\$1,300

SPORTIVO BICOLOR INTERIOR W/ALCANTARA
-inc: With this package, the following parts are covered in Alcantara: A-pillars, lower dashboard, lid of storage bin and defroster trim, Rooflining & A-Pillars in Alcantara for Basic Interior, Alcantara Inner Door Trim, Alcantara Center Console Upper/Lower Sides \$3,500

ARANCIO BOREALIS 4-LAYER
\$4,500

ARANCIO LEONIS/NERO ADE, SPORTIVO BICOLOR SEAT TRIM

-
Option Packages Total
\$30,700

Elite Motorsports

elitemotorsports.com

512-452-9068

11906 Anderson Mill Rd

Austin , Texas 78726

© 2021 AutoRevo - All rights reserved. - Powered by AutoRevo