

# 2021 Jeep Wrangler Unlimited Sport 4X4 DUPONT KEVLAR,LIFTED,LED'S

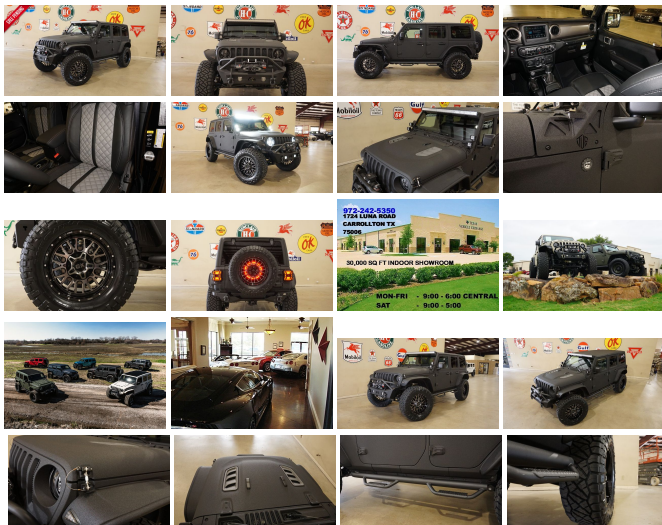
View this car on our website at [tveauto.com/6854721/ebrochure](http://tveauto.com/6854721/ebrochure)



Our Price **\$74,900**

## Specifications:

<b>Year:</b>	2021
<b>VIN:</b>	1C4HJXDGMW501724
<b>Make:</b>	Jeep
<b>Stock:</b>	501724
<b>Model/Trim:</b>	Wrangler Unlimited Sport 4X4 DUPONT KEVLAR,LIFTED,LED'S
<b>Condition:</b>	Pre-Owned
<b>Body:</b>	SUV
<b>Exterior:</b>	Black
<b>Engine:</b>	ENGINE: 3.6L V6 24V VVT ETORQUE UPG I
<b>Interior:</b>	Black Leather
<b>Transmission:</b>	TRANSMISSION: 8-SPEED AUTOMATIC (850RE)
<b>Mileage:</b>	49
<b>Drivetrain:</b>	4 Wheel Drive
<b>Economy:</b>	City 17 / Highway 23



NATION WIDE FINANCING

SUBMIT CREDIT APP [WWW.TVEAUTO.COM](http://WWW.TVEAUTO.COM)

OR CALL 972-242-5350

**"RAPTOR BLACK EDITION"**

CUSTOM BUILT **KEVLAR** 2021 JEEP  
WRANGLER JL UNLIMITED SPORT 4X4  
WITH 25S PACKAGE

**UPGRADES INCLUDE:**

- \* RAPTOR BLACK KEVLAR COATING WITH ANTHRACITE ACCENTS
- \* CUSTOM ALEA BLACK & GRAY LEATHER WITH GRAY STITCHING
- \* FACTORY REMOTE START
- \* COLD WEATHER GROUP
- \* CONVENIENCE GROUP
- \* FACTORY 7.0 INCH TOUCH SCREEN WITH AM/FM/SIRIUS STEREO & ALPINE PREMIUM AUDIO SYSTEM
- \* FACTORY BACK-UP CAMERA
- \* U-CONNECT
- \* FAB FOURS STUBBY FRONT BUMPER WITH LED FOGLIGHTS
- \* FRONT D-RINGS & ISOLATORS (ANTHRACITE)
- \* SMITTYBILT NEW GEN II "X20" 10,000 LB WATERPROOF AND WIRELESS CONTROL WINCH WITH SYNTHETIC ROPE
- \* FACTOR 55 PROLINK (BLACK)
- \* FACTORY MESH GRILLE PAINTED ANTHRACITE
- \* EVOLUTION 2 LED HEADLIGHTS
- \* RUGGED RIDGE BLACK HEADLIGHT GUARDS
- \* MOPAR 10TH ANNIVERSARY RUBICON POWER DOME HOOD
- \* DRAKE OFF ROAD HOOD LATCHES
- \* BUSHWACKER JL FLAT STYLE FENDERS
- \* RUBICON EXPRESS 2.5" LIFT KIT WITH TERAFLX FALCON SERIES 3 SHOCKS & RESERVOIRS
- \* TERAFLX FALCON STABILIZER KIT
- \* MOPAR AUXILIARY SWITCH BANK KIT
- \* FOLDED LIGHT BAR AND 4 BARS

^ 50" LED LIGHT BAR AND 4 RIGID  
INDUSTRIES DUALY D2 LED PILLAR  
LIGHTS

\* SMITTYBILT BLACK TUBULAR STEPS

\* MOPAR BLACK FUEL DOOR

\* EVOLUTION 2 BLACK LED TAIL LIGHTS

\* RUGGED RIDGE BLACK TAIL LIGHT  
GUARDS

\* RUGGED RIDGE SPARTACUS HD HINGE  
KIT

\* RUGGED RIDGE LED THIRD BRAKE LIGHT  
RING

\* DV8 OFF ROAD REAR BUMPER

\* REAR D-RINGS & ISOLATORS  
(ANTHRACITE)

\* ALL WEATHER FLOOR MATS

\* TAZER JL PROGRAMMER WITH  
SPEEDOMETER CALIBRATION

\* 20" KMC "XD842 SNARE" WHEELS

\* BRAND NEW NITTO RIDGE GRAPPLER  
37X13.50R/20 TIRES

**WE BUILD EVERY JEEP WITH PRIDE! DO  
NOT HESITATE TO CALL US WITH THIS  
JEEP BUILD. WE CAN MAKE CHANGES TO  
THIS JEEP BUILD OR CUSTOM BUILD ANY  
JEEP TO YOUR PREFERENCE. GIVE US A  
CALL @ 972-242-5350 OR STOP BY FOR A  
TEST DRIVE. 1724 LUNA RD IN  
CARROLLTON - 2 MILES NORTH OF 635.**

**Our Location :**



2021 Jeep Wrangler Unlimited Sport 4X4 DUPONT KEVLAR,LIFTED,LED'S  
 Texas Vehicle Exchange - 972-242-5350 - View this car on our website at [veauto.com/6854721/ebrochure](http://veauto.com/6854721/ebrochure)

**Installed Options**

**Interior**

- 6-Way Driver Seat -inc: Manual Recline, Height Adjustment, Fore/Aft Movement and Manual Lumbar Support
- Cloth Low-Back Bucket Seats
- Front Seats w/Cloth Back Material and Manual Driver Lumbar
- Full Carpet Floor Covering -inc: Carpet Front And Rear Floor Mats
- Gauges -inc: Speedometer, Odometer, Engine Coolant Temp, Tachometer, Engine Hour Meter, Trip Odometer and Trip Computer
- Manual Air Conditioning- Trip Computer- 110 MPH Vehicle Max Speed Calibration
- 2 12V DC Power Outlets- 2 Seatback Storage Pockets
- 4-Way Passenger Seat -inc: Manual Recline and Fore/Aft Movement
- 60-40 Folding Split-Bench Front Facing Fold Forward Seatback Cloth Rear Seat
- Analog Display- Cargo Space Lights- Carpet Floor Trim, Carpet And Rubber Mat
- Compass- Cruise Control w/Steering Wheel Controls- Day-Night Rearview Mirror
- Delayed Accessory Power- Fade-To-Off Interior Lighting- Front And Rear Map Lights
- Front Center Armrest w/Storage
- Full Floor Console w/Locking Storage and 2 12V DC Power Outlets
- HVAC -inc: Console Ducts- Illuminated Front Cupholder- Illuminated Rear Cupholder
- Instrument Panel Bin, Dashboard Storage, Driver / Passenger And Rear Door Bins
- Interior Trim -inc: Metal-Look Instrument Panel Insert and Metal-Look Console Insert
- Locking Cargo Area Concealed Storage- Locking Glove Box
- Manual Adjustable Front Head Restraints and Foldable Rear Head Restraints
- Manual Tilt/Telescoping Steering Column- Outside Temp Gauge
- Proximity Key For Push Button Start Only - Redundant Digital Speedometer
- Removable 3rd Row Windows- Sentry Key Engine Immobilizer- Systems Monitor
- Urethane Gear Shifter Material- Vanity w/Driver And Passenger Auxiliary Mirror

**Exterior**

- Black Front Bumper w/2 Tow Hooks- Black Rear Bumper w/1 Tow Hook

**Option Packages**

**Factory Installed Packages**

ENGINE: 3.6L V6 24V VVT ETORQUE UPG I	\$1,500
TRANSMISSION: 8-SPEED AUTOMATIC (850RE)	\$1,500
ALPINE PREMIUM AUDIO SYSTEM	\$1,295
BLACK 3-PIECE HARD TOP -inc: Freedom Panel Storage Bag, Rear Window Defroster, Rear Window Wiper/Washer, No Soft Top	\$1,395
COLD WEATHER GROUP -inc: Heated Steering Wheel, Heated Front Seats	\$995
CONVENIENCE GROUP -inc: Universal Garage Door Opener	\$595
TECHNOLOGY GROUP -inc: Google Android Auto, Selectable Tire Fill Alert, SiriusXM Satellite Radio, SiriusXM Radio Service, For More Info, Call 800-643-2112, USB Host Flip, Integrated Center Stack Radio, Air Conditioning w/Auto Temp Control, GPS Antenna Input, Cluster 7.0" TFT Color Display, 7.0"	\$995

- Front Fog Lamps- Manual Convertible Top w/Fixed Roll-Over Protection
- Wheels: 17" x 7.5" Tech Silver Aluminum
- Aero-Composite Halogen Headlamps w/Delay-Off- Black Door Handles
- Black Fender Flares- Black Side Windows Trim- Body-Colored Grille- Clearcoat Paint
- Conventional Rear Cargo Access- Deep Tint Sunscreen Windows
- Full-Size Spare Tire Mounted Outside Rear
- Galvanized Steel/Aluminum/Magnesium Panels- Removable Rear Window
- Tires: 245/75R17 All Season- Variable Intermittent Wipers

## Safety

- 6-Way Driver Seat -inc: Manual Recline, Height Adjustment, Fore/Aft Movement and Manual Lumbar Support
- Cloth Low-Back Bucket Seats
- Front Seats w/Cloth Back Material and Manual Driver Lumbar
- Full Carpet Floor Covering -inc: Carpet Front And Rear Floor Mats
- Gauges -inc: Speedometer, Odometer, Engine Coolant Temp, Tachometer, Engine Hour Meter, Trip Odometer and Trip Computer
- Manual Air Conditioning- Trip Computer- 110 MPH Vehicle Max Speed Calibration
- 2 12V DC Power Outlets- 2 Seatback Storage Pockets
- 4-Way Passenger Seat -inc: Manual Recline and Fore/Aft Movement
- 60-40 Folding Split-Bench Front Facing Fold Forward Seatback Cloth Rear Seat
- Analog Display- Cargo Space Lights- Carpet Floor Trim, Carpet And Rubber Mat
- Compass- Cruise Control w/Steering Wheel Controls- Day-Night Rearview Mirror
- Delayed Accessory Power- Fade-To-Off Interior Lighting- Front And Rear Map Lights
- Front Center Armrest w/Storage
- Full Floor Console w/Locking Storage and 2 12V DC Power Outlets
- HVAC -inc: Console Ducts- Illuminated Front Cupholder- Illuminated Rear Cupholder
- Instrument Panel Bin, Dashboard Storage, Driver / Passenger And Rear Door Bins
- Interior Trim -inc: Metal-Look Instrument Panel Insert and Metal-Look Console Insert
- Locking Cargo Area Concealed Storage- Locking Glove Box
- Manual Adjustable Front Head Restraints and Foldable Rear Head Restraints
- Manual Tilt/Telescoping Steering Column- Outside Temp Gauge
- Proximity Key For Push Button Start Only - Redundant Digital Speedometer
- Removable 3rd Row Windows- Sentry Key Engine Immobilizer - Systems Monitor
- Urethane Gear Shifter Material- Vanity w/Driver And Passenger Auxiliary Mirror

## Mechanical

- 4-Wheel Disc Brakes w/4-Wheel ABS, Front Vented Discs, Brake Assist and Hill Hold Control
- Engine: 3.6L V6 24V VVT UPG I w/ESS - Transmission: 6-Speed Manual
- 1233# Maximum Payload- 180 Amp Alternator- 21.5 Gal. Fuel Tank- 3 Skid Plates
- 3.45 Rear Axle Ratio- 50 State Emissions
- 650CCA Maintenance-Free Battery w/Run Down Protection- Auto Locking Hubs
- Brake Actuated Limited Slip Differential - Electro-Hydraulic Power Assist Steering
- Engine Auto Stop-Start Feature- Engine Oil Cooler- Front And Rear Anti-Roll Bars
- GVWR: 5,400 lbs- Gas-Pressurized Shock Absorbers
- Leading Link Front Suspension w/Coil Springs- Manual Transfer Case
- Normal Duty Suspension- Part-Time Four-Wheel Drive- Single Stainless Steel Exhaust
- Towing Equipment -inc: Trailer Sway Control
- Trailing Arm Rear Suspension w/Coil Springs

Touchscreen Display, Apple CarPlay, Air Filtering

## QUICK ORDER PACKAGE 25S SPORT S

-inc: Engine: 3.6L V6 24V VVT eTorque UPG I, Transmission: 8-Speed Automatic (850RE), Front 1-Touch Down Power Windows, Speed Sensitive Power Locks, Power Heated Mirrors, Automatic Headlamps, Leather Wrapped Steering Wheel, Security Alarm, Remote Keyless Entry, Sun Visors w/Illuminated Vanity Mirrors

\$3,200

Option Packages Total

\$11,475

Texas Vehicle Exchange

[tveauto.com](http://tveauto.com)

972-242-5350

1724 Luna Road

Carrollton, TX 75006

© 2024 AutoRevo - All rights reserved. - Powered by AutoRevo