

## 2015 Toyota Camry XSE

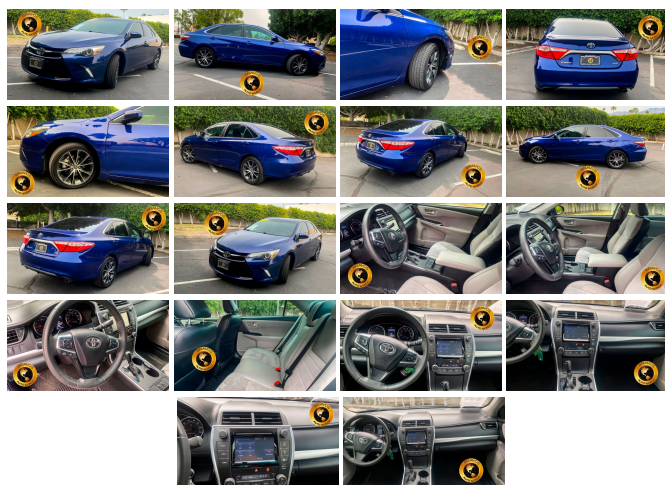
View this car on our website at [bravosautoworld.com/6851998/ebrochure](http://bravosautoworld.com/6851998/ebrochure)



Our Price **\$17,995**

### Specifications:

<b>Year:</b>	2015
<b>VIN:</b>	4T1BF1FK4FU900130
<b>Make:</b>	Toyota
<b>Stock:</b>	JK82420
<b>Model/Trim:</b>	Camry XSE
<b>Condition:</b>	Pre-Owned
<b>Body:</b>	Sedan
<b>Exterior:</b>	Blue Crush Metallic
<b>Engine:</b>	Engine: 2.5L I-4 DOHC SMPI
<b>Interior:</b>	Gray Leather/Cloth
<b>Mileage:</b>	65,607
<b>Drivetrain:</b>	Front Wheel Drive
<b>Economy:</b>	City 25 / Highway 35



2015 Toyota Camry XSE

Bravo's Auto World - (760) 409-7781 - View this car on our website at [bravosautoworld.com/6851998/ebrochure](http://bravosautoworld.com/6851998/ebrochure)

## Our Location :



2015 Toyota Camry XSE

Bravo's Auto World - (760) 409-7781 - View this car on our website at [bravosautoworld.com/6851998/ebrochure](http://bravosautoworld.com/6851998/ebrochure)

## Installed Options

### Interior

- 2 12V DC Power Outlets- 2-Way Power Driver Seat -inc: Power Height Adjustment
- 60-40 Folding Bench Front Facing Fold Forward Seatback Rear Seat - Air Filtration
- Analog Display- Cargo Area Concealed Storage- Cargo Space Lights
- Carpet Floor Trim and Carpet Trunk Lid/Rear Cargo Door Trim
- Cruise Control w/Steering Wheel Controls- Day-Night Rearview Mirror
- Delayed Accessory Power
- Driver And Passenger Visor Vanity Mirrors w/Driver And Passenger Auxiliary Mirror
- Driver Foot Rest- Dual Zone Front Automatic Air Conditioning- Engine Immobilizer
- FOB Controls -inc: Cargo Access- Fade-To-Off Interior Lighting- Front Cupholder
- Front Map Lights- Full Carpet Floor Covering- Full Cloth Headliner
- Full Floor Console w/Covered Storage, Mini Overhead Console w/Storage and 2 12V DC Power Outlets
- Gauges -inc: Speedometer, Odometer, Engine Coolant Temp, Tachometer, Trip Odometer and Trip Computer
- HVAC -inc: Underseat Ducts and Console Ducts - Illuminated Locking Glove Box
- Instrument Panel Covered Bin, Driver / Passenger And Rear Door Bins
- Interior Trim -inc: Metal-Look Instrument Panel Insert, Metal-Look Door Panel Insert, Metal-Look Console Insert and Chrome/Metal-Look Interior Accents
- Leather/Piano Black Gear Shifter Material- Leatherette Door Trim Insert
- Manual Adjustable Front Head Restraints and Fixed Rear Head Restraints
- Manual Tilt/Telescoping Steering Column
- Multi-Stage Heated Front Bucket Seats -inc: 8-way power driver's seat w/power lumbar support, 4-way power front passenger seat and seatback pockets
- Outside Temp Gauge- Passenger Seat
- Power 1st Row Windows w/Driver And Passenger 1-Touch Up/Down
- Power Door Locks w/Autolock Feature- Power Rear Windows- Rear Cupholder
- Remote Keyless Entry w/Integrated Key Transmitter, 2 Door Curb/Courtesy, Illuminated Entry, Illuminated Ignition Switch and Panic Button
- Remote Releases -Inc: Mechanical Cargo Access and Mechanical Fuel

- Seats w/Leatherette Back Material
- Sliding Front Center Armrest and Rear Center Armrest- Sport Leather Steering Wheel
- Sport Leather-Trimmed Ultrasuede Seat Trim- Trip Computer- Valet Function

---

## Exterior

- Body-Colored Door Handles- Body-Colored Front Bumper
- Body-Colored Power Heated Side Mirrors w/Manual Folding- Body-Colored Rear Bumper
- Chrome Side Windows Trim- Clearcoat Paint
- Compact Spare Tire Mounted Inside Under Cargo- Fixed Rear Window w/Defroster
- Front License Plate Bracket- Front Windshield -inc: Sun Visor Strip
- Fully Automatic Projector Beam Halogen Daytime Running Headlamps w/Delay-Off
- Fully Galvanized Steel Panels- Grille w/Chrome Bar- Light Tinted Glass- Lip Spoiler
- Steel Spare Wheel- Tires: P225/45R18 AS- Trunk Rear Cargo Access
- Variable Intermittent Wipers
- Wheels: 7.5J x 18" Alloy -inc: machined face and black paint

---

## Safety

- 2 12V DC Power Outlets- 2-Way Power Driver Seat -inc: Power Height Adjustment
- 60-40 Folding Bench Front Facing Fold Forward Seatback Rear Seat - Air Filtration
- Analog Display- Cargo Area Concealed Storage- Cargo Space Lights
- Carpet Floor Trim and Carpet Trunk Lid/Rear Cargo Door Trim
- Cruise Control w/Steering Wheel Controls- Day-Night Rearview Mirror
- Delayed Accessory Power
- Driver And Passenger Visor Vanity Mirrors w/Driver And Passenger Auxiliary Mirror
- Driver Foot Rest- Dual Zone Front Automatic Air Conditioning- Engine Immobilizer
- FOB Controls -inc: Cargo Access- Fade-To-Off Interior Lighting- Front Cupholder
- Front Map Lights- Full Carpet Floor Covering- Full Cloth Headliner
- Full Floor Console w/Covered Storage, Mini Overhead Console w/Storage and 2 12V DC Power Outlets
- Gauges -inc: Speedometer, Odometer, Engine Coolant Temp, Tachometer, Trip Odometer and Trip Computer
- HVAC -inc: Underseat Ducts and Console Ducts - Illuminated Locking Glove Box
- Instrument Panel Covered Bin, Driver / Passenger And Rear Door Bins
- Interior Trim -inc: Metal-Look Instrument Panel Insert, Metal-Look Door Panel Insert, Metal-Look Console Insert and Chrome/Metal-Look Interior Accents
- Leather/Piano Black Gear Shifter Material- Leatherette Door Trim Insert
- Manual Adjustable Front Head Restraints and Fixed Rear Head Restraints
- Manual Tilt/Telescoping Steering Column
- Multi-Stage Heated Front Bucket Seats -inc: 8-way power driver's seat w/power lumbar support, 4-way power front passenger seat and seatback pockets
- Outside Temp Gauge- Passenger Seat
- Power 1st Row Windows w/Driver And Passenger 1-Touch Up/Down
- Power Door Locks w/Autolock Feature- Power Rear Windows- Rear Cupholder
- Remote Keyless Entry w/Integrated Key Transmitter, 2 Door Curb/Courtesy, Illuminated Entry, Illuminated Ignition Switch and Panic Button
- Remote Releases -Inc: Mechanical Cargo Access and Mechanical Fuel
- Seats w/Leatherette Back Material
- Sliding Front Center Armrest and Rear Center Armrest- Sport Leather Steering Wheel
- Sport Leather-Trimmed Ultrasuede Seat Trim- Trip Computer- Valet Function

---

## Mechanical

- 17 Gal. Fuel Tank- 3.63 Axle Ratio
- 4-Wheel Disc Brakes w/4-Wheel ABS, Front Vented Discs and Brake Assist
- Battery w/Run Down Protection- Electric Power-Assist Speed-Sensing Steering
- Engine: 2.5L I-4 DOHC SMPI- Front And Rear Anti-Roll Bars- Front-Wheel Drive
- Gas-Pressurized Shock Absorbers
- Single Stainless Steel Exhaust w/Chrome Tailpipe Finisher - Sport Tuned Suspension
- Strut Front Suspension w/Coil Springs- Strut Rear Suspension w/Coil Springs
- Transmission w/Sequential Shift Control w/Steering Wheel Controls
- Transmission: 6-Speed Automatic -inc: paddle shifters

