

2014 Kia Cadenza Premium

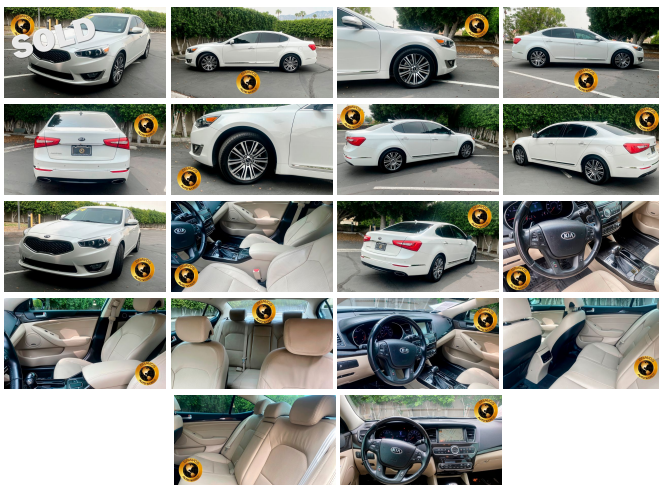
View this car on our website at bravosautoworld.com/6851997/ebrochure



Our Price **\$15,995**

Specifications:

Year:	2014
VIN:	KNALN4D7XE5152372
Make:	Kia
Stock:	JK824207
Model/Trim:	Cadenza Premium
Condition:	Pre-Owned
Body:	Sedan
Exterior:	Snow White Pearl
Engine:	Engine: 3.3L 24-Valve DOHC CVVT V6
Interior:	Gray Leather
Mileage:	88,449
Drivetrain:	Front Wheel Drive
Economy:	City 19 / Highway 28



2014 Kia Cadenza Premium

Bravo's Auto World - (760) 409-7781 - View this car on our website at bravosautoworld.com/6851997/ebrochure

Our Location :



2014 Kia Cadenza Premium

Bravo's Auto World - (760) 409-7781 - View this car on our website at bravosautoworld.com/6851997/ebrochure

Installed Options

Interior

- 2 12V DC Power Outlets- 2 Seatback Storage Pockets- Air Filtration- Analog Display
- Bench Front Facing Rear Seat - Cargo Space Lights
- Carpet Floor Trim, Carpet Trunk Lid/Rear Cargo Door Trim and Carpet Mat - Compass
- Cruise Control w/Steering Wheel Controls- Day-Night Auto-Dimming Rearview Mirror
- Delayed Accessory Power- Driver / Passenger And Rear Door Bins
- Driver And Passenger Heated-Cushion, Driver And Passenger Heated-Seatback
- Driver And Passenger Visor Vanity Mirrors w/Driver And Passenger Illumination
- Driver Foot Rest- Driver Seat- Dual Zone Front Automatic Air Conditioning
- Engine Immobilizer- FOB Controls -inc: Cargo Access- Fade-To-Off Interior Lighting
- Front And Rear Map Lights
- Front Bucket Seats -inc: power 10-way driver seat w/power lumbar and 4-way power front passenger seat
- Front Center Armrest and Rear Center Armrest w/Pass-Thru- Front Cupholder
- Full Carpet Floor Covering -inc: Carpet Front And Rear Floor Mats - Full Cloth Headliner
- Full Floor Console w/Covered Storage, Mini Overhead Console w/Storage and 2 12V DC Power Outlets
- Gauges -inc: Speedometer, Odometer, Engine Coolant Temp, Tachometer, Trip Odometer and Trip Computer
- HVAC -inc: Underseat Ducts and Console Ducts - HomeLink Garage Door Transmitter
- Illuminated Locking Glove Box
- Interior Trim -inc: Simulated Wood Instrument Panel Insert, Simulated Wood Door Panel Insert, Simulated Wood Console Insert and Chrome/Metal-Look Interior Accents
- Leather Seat Trim- Leather/Simulated Wood Gear Shifter Material
- Leather/Simulated Wood Steering Wheel- Leatherette Door Trim Insert
- Manual Tilt/Telescoping Steering Column
- Manual w/Tilt Front Head Restraints and Manual Adjustable Rear Head Restraints
- Outside Temp Gauge- Passenger Seat- Perimeter Alarm
- Power 1st Row Windows w/Driver And Passenger 1-Touch Up/Down
- Power Door Locks w/Autolock Feature- Power Rear Windows

- Proximity Key For Doors And Push Button Start - Rear Cupholder
- Remote Keyless Entry w/Integrated Key Transmitter, 2 Door Curb/Courtesy, Illuminated Entry, Illuminated Ignition Switch and Panic Button
- Remote Releases -Inc: Power Cargo Access and Power Fuel- Smart Device Integration
- Trip Computer- Valet Function

Exterior

- Black Grille w/Chrome Surround
- Body-Colored Bodyside Moldings and Chrome Bodyside Insert
- Body-Colored Front Bumper w/Chrome Rub Strip/Fascia Accent
- Body-Colored Power Heated Side Mirrors w/Power Folding and Turn Signal Indicator
- Body-Colored Rear Bumper w/Chrome Bumper Insert- Chrome Door Handles
- Chrome Side Windows Trim- Clearcoat Paint
- Compact Spare Tire Mounted Inside Under Cargo- Fixed Rear Window w/Defroster
- Front Fog Lamps- Front Windshield -inc: Sun Visor Strip
- Fully Automatic Projector Beam Halogen Daytime Running Auto-Leveling Headlamps w/Delay-Off
- Fully Galvanized Steel Panels- LED Brakelights- Light Tinted Glass
- Perimeter/Approach Lights- Rain Detecting Variable Intermittent Wipers
- Steel Spare Wheel- Tires: P245/45R18- Trunk Rear Cargo Access
- Wheels: 18" x 7.5" Alloy

Safety

- 2 12V DC Power Outlets- 2 Seatback Storage Pockets- Air Filtration- Analog Display
- Bench Front Facing Rear Seat - Cargo Space Lights
- Carpet Floor Trim, Carpet Trunk Lid/Rear Cargo Door Trim and Carpet Mat - Compass
- Cruise Control w/Steering Wheel Controls- Day-Night Auto-Dimming Rearview Mirror
- Delayed Accessory Power- Driver / Passenger And Rear Door Bins
- Driver And Passenger Heated-Cushion, Driver And Passenger Heated-Seatback
- Driver And Passenger Visor Vanity Mirrors w/Driver And Passenger Illumination
- Driver Foot Rest- Driver Seat- Dual Zone Front Automatic Air Conditioning
- Engine Immobilizer- FOB Controls -inc: Cargo Access- Fade-To-Off Interior Lighting
- Front And Rear Map Lights
- Front Bucket Seats -inc: power 10-way driver seat w/power lumbar and 4-way power front passenger seat
- Front Center Armrest and Rear Center Armrest w/Pass-Thru- Front Cupholder
- Full Carpet Floor Covering -inc: Carpet Front And Rear Floor Mats - Full Cloth Headliner
- Full Floor Console w/Covered Storage, Mini Overhead Console w/Storage and 2 12V DC Power Outlets
- Gauges -inc: Speedometer, Odometer, Engine Coolant Temp, Tachometer, Trip Odometer and Trip Computer
- HVAC -inc: Underseat Ducts and Console Ducts - HomeLink Garage Door Transmitter
- Illuminated Locking Glove Box
- Interior Trim -inc: Simulated Wood Instrument Panel Insert, Simulated Wood Door Panel Insert, Simulated Wood Console Insert and Chrome/Metal-Look Interior Accents
- Leather Seat Trim- Leather/Simulated Wood Gear Shifter Material
- Leather/Simulated Wood Steering Wheel- Leatherette Door Trim Insert
- Manual Tilt/Telescoping Steering Column
- Manual w/Tilt Front Head Restraints and Manual Adjustable Rear Head Restraints
- Outside Temp Gauge- Passenger Seat- Perimeter Alarm
- Power 1st Row Windows w/Driver And Passenger 1-Touch Up/Down
- Power Door Locks w/Autolock Feature- Power Rear Windows
- Proximity Key For Doors And Push Button Start - Rear Cupholder
- Remote Keyless Entry w/Integrated Key Transmitter, 2 Door Curb/Courtesy, Illuminated Entry, Illuminated Ignition Switch and Panic Button
- Remote Releases -Inc: Power Cargo Access and Power Fuel- Smart Device Integration
- Trip Computer- Valet Function

Mechanical

- 18.5 Gal. Fuel Tank- 3.04 Axle Ratio
- 4-Wheel Disc Brakes w/4-Wheel ABS, Front Vented Discs, Brake Assist and Hill Hold Control
- 80-Amp/Hr 660CCA Maintenance-Free Battery w/Run Down Protection
- Electric Power-Assist Speed-Sensing Steering- Engine: 3.3L 24-Valve DOHC CVT V6
- Front And Rear Anti-Roll Bars- Front-Wheel Drive- Gas-Pressurized Shock Absorbers
- Multi-Link Rear Suspension w/Coil Springs
- Quasi-Dual Stainless Steel Exhaust w/Chrome Tailpipe Finisher
- Strut Front Suspension w/Coil Springs- Transmission w/Driver Selectable Mode
- Transmission: 6-Speed Automatic w/Sportmatic -inc: steering wheel mounted paddle shifters

Bravo's Auto World

bravosautoworld.com

(760) 409-7781

68750 RAMON RD

Cathedral, California 92234

© 2020 AutoRevo - All rights reserved. - Powered by [AutoRevo](#)