

2008 Chevrolet Tahoe LTZ

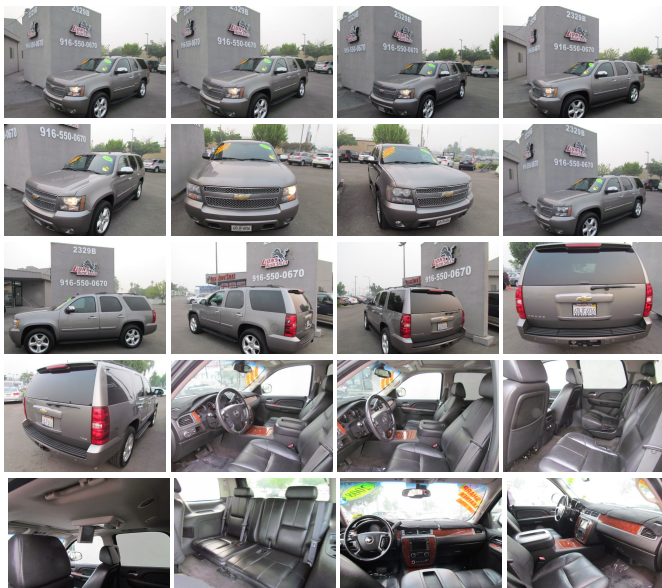
View this car on our website at lionsautosales.net/6851394/ebrochure



Our Price **\$13,750**

Specifications:

Year:	2008
VIN:	1GNFC130X8R110958
Make:	Chevrolet
Stock:	004466706
Model/Trim:	Tahoe LTZ
Condition:	Pre-Owned
Body:	SUV
Exterior:	Gray
Engine:	ENGINE, VORTEC 5.3L V8 SFI FLEXFUEL WITH ACTIVE FUEL MANAGEMENT
Interior:	Black Leather
Mileage:	149,074
Drivetrain:	Rear Wheel Drive
Economy:	City 14 / Highway 20



2008 Chevrolet Tahoe LTZ

Lions Auto Sales - (916) 550-0670 - View this car on our website at lionsautosales.net/6851394/ebrochure

Our Location :



2008 Chevrolet Tahoe LTZ

Lions Auto Sales - (916) 550-0670 - View this car on our website at lionsautosales.net/6851394/ebrochure

Installed Options

Interior

- Air conditioning, rear auxiliary
- Air conditioning, tri-zone automatic climate control with individual climate settings for driver and right-front passenger
- Assist handles, front passenger and second row outboard
- Console, floor with storage area, cup holders and integrated second row audio controls (Includes woodgrain covered forward storage.)
- Cruise control, electronic with set and resume speed - Defogger, rear-window electric
- Door locks, power programmable with lockout protection
- Floor covering, color-keyed carpeting
- Floor mats, color-keyed carpeted first and second row, removable - Headliner, cloth
- Heater, rear auxiliary with rear passenger heating ducts
- Instrumentation, analog with speedometer, odometer with trip odometer, fuel level, voltmeter, engine temperature, oil pressure and tachometer
- Lighting, interior with dome light, driver- and passenger-side door switch with delayed entry feature, cargo lights, door handle or Remote Keyless Entry-activated illuminated entry and map lights in front and second seat positions
- Mirror, inside rearview auto-dimming with 8-point compass and outside temperature display
- Pedals, power-adjustable for accelerator and brake
- Power outlets, 5 auxiliary, 12-volt, includes 2 on the instrument panel, 1 in the cargo area, 1 inside the center console and 1 at the back of the console.)
- Rear Parking Assist, Ultrasonic with rearview LED display and audible warning
- Remote vehicle starter system includes Remote Keyless Entry
- Seat release, second row, power release only
- Seats, front bucket with leather-appointed seating, 10-way power driver and front passenger seat adjusters, including power lumbar control, heated seat cushion and seatbacks, 2-position driver memory, adjustable head restraints, storage pockets and floor console
- Seats, heated second row
- Seats, second row bucket with leather-appointed seating, reclining
- Seats, third row 50/50 split-bench with 3-passenger, removable, all-belts-to-seat

- Steering column, Tilt-Wheel, adjustable with brake/transmission shift interlock
- Steering wheel controls, mounted audio and cruise controls
- Steering wheel, leather-wrapped Theft-deterrent system, vehicle, PASS-Key III
- Tire Pressure Monitoring System (does not apply to spare tire)
- Universal Home Remote includes garage door opener, programmable
- Visors, driver and front passenger illuminated vanity mirrors, padded with cloth trim, extends on rod
- Warning tones, headlamp on, key-in-ignition, driver and right-front passenger safety belt unfasten and turn signal on
- Windows, power with driver Express-Down and lockout features

Exterior

- Assist steps, Black (Upgradeable to (BRS) power-retractable assist steps. Not available with (STX) White Diamond Edition.)
- Body, liftgate with liftglass, rear door system with rear-window wiper/washer
- Daytime Running Lamps, with automatic exterior lamp control - Door handles, chrome
- Fascia, front color-keyed- Fascia, rear color-keyed- Fog lamps, front, halogen
- Glass, Solar-Ray deep-tinted (all windows except light-tinted glass on windshield and driver- and front passenger-side glass)
- Grille insert, bright chrome
- Headlamps, dual halogen composite with automatic exterior lamp control and flash-to-pass feature
- Liftgate, rear power-operated- Luggage rack side rails, roof-mounted, Black
- Mirrors, outside heated power-adjustable, power-folding and driver-side auto-dimming with integrated turn signal indicators, ground illumination and curb-tilt (Mirror caps are bright chrome.)
- Moldings, color-keyed bodyside ((B85) color-keyed bodyside moldings will be chrome-accented when (STX) White Diamond Edition is ordered.)
- Tire carrier, lockable outside spare, winch-type mounted under frame at rear
- Tire, spare P265/70R17 (Upgradeable to (4JP) P265/70R17 on-/off-road, blackwall spare tire.)
- Tires, P275/55R20 all-season, blackwall- Wheel, 17" (43.2 cm) full-size, steel spare
- Wheels, 4 - 20" x 8.5" (50.8 cm x 21.6 cm) polished aluminum
- Windshield washer fluid system, heated- Wiper, rear intermittent with washer
- Wipers, front intermittent, RainSense

Safety

- Air conditioning, rear auxiliary
- Air conditioning, tri-zone automatic climate control with individual climate settings for driver and right-front passenger
- Assist handles, front passenger and second row outboard
- Console, floor with storage area, cup holders and integrated second row audio controls (Includes woodgrain covered forward storage.)
- Cruise control, electronic with set and resume speed - Defogger, rear-window electric
- Door locks, power programmable with lockout protection
- Floor covering, color-keyed carpeting
- Floor mats, color-keyed carpeted first and second row, removable - Headliner, cloth
- Heater, rear auxiliary with rear passenger heating ducts
- Instrumentation, analog with speedometer, odometer with trip odometer, fuel level, voltmeter, engine temperature, oil pressure and tachometer
- Lighting, interior with dome light, driver- and passenger-side door switch with delayed entry feature, cargo lights, door handle or Remote Keyless Entry-activated illuminated entry and map lights in front and second seat positions
- Mirror, inside rearview auto-dimming with 8-point compass and outside temperature display
- Pedals, power-adjustable for accelerator and brake
- Power outlets, 5 auxiliary, 12-volt, includes 2 on the instrument panel, 1 in the cargo area, 1 inside the center console and 1 at the back of the console.)
- Rear Parking Assist, Ultrasonic with rearview LED display and audible warning
- Remote vehicle starter system includes Remote Keyless Entry
- Seat release, second row, power release only
- Seats, front bucket with leather-appointed seating, 10-way power driver and front passenger seat adjusters, including power lumbar control, heated seat cushion and seatbacks, 2-position driver memory, adjustable head restraints, storage pockets and floor console
- Seats, heated second row
- Seats, second row bucket with leather-appointed seating, reclining
- Seats, third row 50/50 split-bench with 3-passenger, removable, all-belts-to-seat
- Steering column, Tilt-Wheel, adjustable with brake/transmission shift interlock
- Steering wheel controls, mounted audio and cruise controls
- Steering wheel, leather-wrapped Theft-deterrent system, vehicle, PASS-Key III
- Tire Pressure Monitoring System (does not apply to spare tire)
- Universal Home Remote includes garage door opener, programmable
- Visors, driver and front passenger illuminated vanity mirrors, padded with cloth trim, extends on rod
- Warning tones, headlamp on, key-in-ignition, driver and right-front passenger safety belt

unfasten and turn signal on

- Windows, power with driver Express-Down and lockout features

Mechanical

- Alternator, 160 amps
- Battery, heavy-duty 600 cold-cranking amps, maintenance-free with rundown protection and retained accessory power
- Differential, heavy-duty locking rear
- Engine, Vortec 5.3L V8 SFI with Active Fuel Management (320 hp [238.6 kW] @ 5200 rpm, 340 lb-ft of torque [459.0 N-m] @ 4200 rpm), iron block (Requires 2WD models. Not available on 4WD models. Not available with (MYC) 6-speed automatic transmission.)
- GVWR, 7100 lbs. (3221 kg) (Standard on 2WD models.)
- Rear axle, 3.42 ratio (Requires 2WD models and (LY5) Vortec 5.3L V8 SFI engine or (LMG) Vortec 5.3L V8 SFI FlexFuel engine. Upgradeable to (GT4) 3.73 rear axle ratio. Not available with (NHT) Max Trailering Package.)
- Rear wheel drive- Steering, power- Suspension, front coil-over-shock with stabilizer bar
- Suspension, rear multi-link with coil springs
- Trailering equipment, heavy-duty, includes trailering hitch platform, 7-wire harness with independent fused trailering circuits mated to a 7-way sealed connector and (VR4) 2" trailering receiver
- Transmission, 4-speed automatic, electronically controlled with overdrive and tow/haul mode (Not available with (L92) Vortec 6.2L V8 SFI engine.)

Option Packages

Factory Installed Packages

ENGINE, VORTEC 5.3L V8 SFI FLEXFUEL WITH ACTIVE FUEL MANAGEMENT

capable of running on unleaded or up to 85% ethanol (320 hp [238.6 kW] @ 5200 rpm, 340 lb-ft of torque [459.0 N-m] @ 4200 rpm), iron block

Lions Auto Sales
lionsautosales.net
(916) 550-0670

2329 Fulton Ave
Sacramento, CA 95825

© 2020 AutoRevo - All rights reserved. - Powered by AutoRevo