



2020 Jeep Wrangler Unlimited Sport S

Our Price \$0

View this vehicle on our website at autodepotcalexico.com

Auto Depot of Calexico

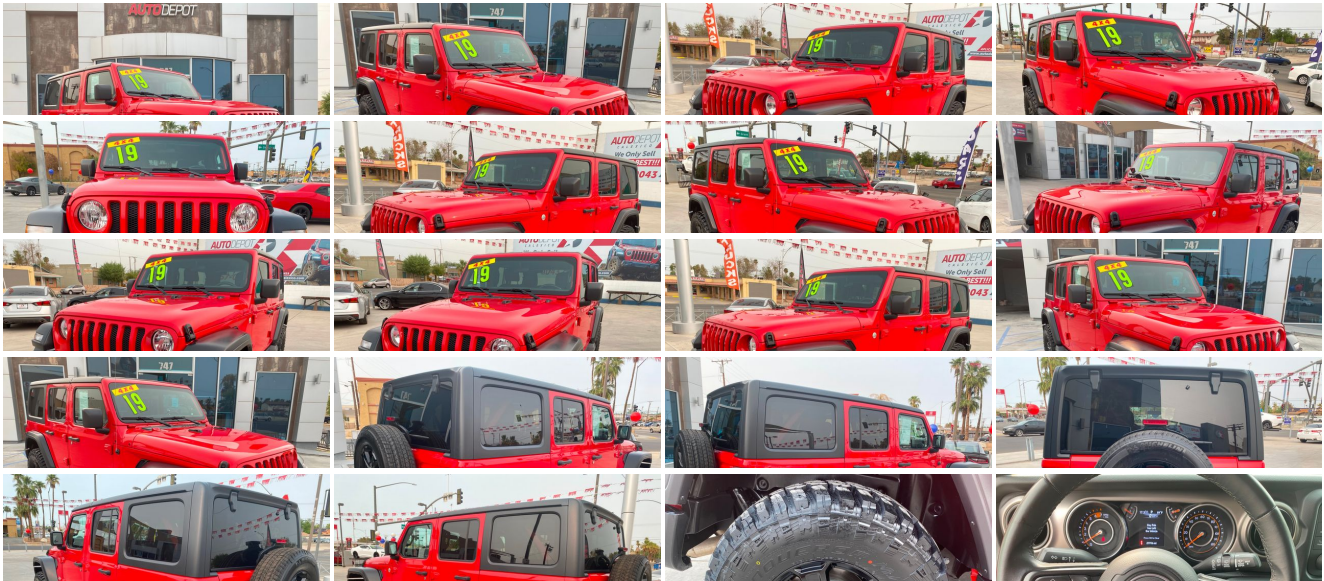
760-357-0043

747 Imperial Ave , Calexico, CA 92231

Photos

Details

Contact



Specifications:

Year:	2020
VIN:	1C4HJXDN0LW198935
Make:	Jeep
Stock:	5851
Model/Trim:	Wrangler Unlimited Sport S
Condition:	Pre-Owned
Body:	SUV
Exterior:	Firecracker Red Clearcoat
Engine:	ENGINE: 2.0L I4 DOHC DI TURBO W/ESS
Interior:	Black Cloth
Mileage:	21,674
Drivetrain:	4 Wheel Drive
Economy:	City 17 / Highway 22

Vehicle Description

Installed Options

Interior

- 6-Way Driver Seat -inc: Manual Recline, Height Adjustment, Fore/Aft Movement and Manual Lumbar Support
- Front Seats w/Cloth Back Material and Manual Driver Lumbar
- Full Carpet Floor Covering -inc: Carpet Front And Rear Floor Mats
- Gauges -inc: Speedometer, Odometer, Engine Coolant Temp, Tachometer, Engine Hour Meter, Trip Odometer and Trip Computer
- Integrated Voice Command w/Bluetooth- Manual Air Conditioning- Trip Computer
- 2 12V DC Power Outlets- 2 Seatback Storage Pockets
- 4-Way Passenger Seat -inc: Manual Recline and Fore/Aft Movement
- 60-40 Folding Split-Bench Front Facing Fold Forward Seatback Cloth Rear Seat
- Analog Display- Cargo Space Lights- Carpet Floor Trim, Carpet And Rubber Mat
- Cloth Low-Back Bucket Seats- Compass- Cruise Control w/Steering Wheel Controls
- Day-Night Rearview Mirror- Delayed Accessory Power- Fade-To-Off Interior Lighting
- Front And Rear Map Lights- Front Center Armrest w/Storage
- Full Floor Console w/Locking Storage and 2 12V DC Power Outlets
- HVAC -inc: Console Ducts- Illuminated Front Cupholder- Illuminated Rear Cupholder
- Instrument Panel Bin, Dashboard Storage, Driver / Passenger And Rear Door Bins
- Interior Trim -inc: Metal-Look Instrument Panel Insert and Metal-Look Console Insert
- Locking Cargo Area Concealed Storage- Locking Glove Box
- Manual Adjustable Front Head Restraints and Foldable Rear Head Restraints
- Manual Tilt/Telescoping Steering Column- Outside Temp Gauge
- Proximity Key For Push Button Start Only - Redundant Digital Speedometer
- Removable 3rd Row Windows- Sentry Key Engine Immobilizer - Systems Monitor
- Urethane Gear Shifter Material- Vanity w/Driver And Passenger Auxiliary Mirror

Exterior

- Black Front Bumper w/2 Tow Hooks- Black Rear Bumper w/1 Tow Hook
- Front Fog Lamps- Manual Convertible Top w/Fixed Roll-Over Protection
- Tires: 245/75R17 All Season- Wheels: 17" x 7.5" Tech Silver Aluminum
- 110 MPH Vehicle Max Speed Calibration
- Aero-Composite Halogen Headlamps w/Delay-Off- Black Door Handles
- Black Fender Flares- Black Side Windows Trim- Body-Colored Grille- Clearcoat Paint
- Conventional Rear Cargo Access- Deep Tint Sunscreen Windows
- Full-Size Spare Tire Mounted Outside Rear
- Galvanized Steel/Aluminum/Magnesium Panels- Non-Lock Fuel Cap w/o Discriminator
- Removable Rear Window- Variable Intermittent Wipers

Safety

- 6-Way Driver Seat -inc: Manual Recline, Height Adjustment, Fore/Aft Movement and Manual Lumbar Support

Option Packages

Factory Installed Packages

ENGINE: 2.0L I4 DOHC DI TURBO W/ESS

RADIO: UCONNECT 4 W/7" DISPLAY

STANDARD PAINT

FIRECRACKER RED CLEARCOAT

BLACK, CLOTH LOW-BACK BUCKET SEATS

- Front Seats w/Cloth Back Material and Manual Driver Lumbar
- Full Carpet Floor Covering -inc: Carpet Front And Rear Floor Mats
- Gauges -inc: Speedometer, Odometer, Engine Coolant Temp, Tachometer, Engine Hour Meter, Trip Odometer and Trip Computer
- Integrated Voice Command w/Bluetooth- Manual Air Conditioning- Trip Computer
- 2 12V DC Power Outlets- 2 Seatback Storage Pockets
- 4-Way Passenger Seat -inc: Manual Recline and Fore/Aft Movement
- 60-40 Folding Split-Bench Front Facing Fold Forward Seatback Cloth Rear Seat
- Analog Display- Cargo Space Lights- Carpet Floor Trim, Carpet And Rubber Mat
- Cloth Low-Back Bucket Seats- Compass- Cruise Control w/Steering Wheel Controls
- Day-Night Rearview Mirror- Delayed Accessory Power- Fade-To-Off Interior Lighting
- Front And Rear Map Lights- Front Center Armrest w/Storage
- Full Floor Console w/Locking Storage and 2 12V DC Power Outlets
- HVAC -inc: Console Ducts- Illuminated Front Cupholder- Illuminated Rear Cupholder
- Instrument Panel Bin, Dashboard Storage, Driver / Passenger And Rear Door Bins
- Interior Trim -inc: Metal-Look Instrument Panel Insert and Metal-Look Console Insert
- Locking Cargo Area Concealed Storage- Locking Glove Box
- Manual Adjustable Front Head Restraints and Foldable Rear Head Restraints
- Manual Tilt/Telescoping Steering Column- Outside Temp Gauge
- Proximity Key For Push Button Start Only - Redundant Digital Speedometer
- Removable 3rd Row Windows- Sentry Key Engine Immobilizer- Systems Monitor
- Urethane Gear Shifter Material- Vanity w/Driver And Passenger Auxiliary Mirror

Mechanical

- 4-Wheel Disc Brakes w/4-Wheel ABS, Front Vented Discs, Brake Assist and Hill Hold Control
 - Engine: 3.6L V6 24V VVT UPG I w/ESS - Transmission: 6-Speed Manual
 - 1233# Maximum Payload- 180 Amp Alternator- 21.5 Gal. Fuel Tank- 3 Skid Plates
 - 3.45 Rear Axle Ratio- 50 State Emissions
 - 650CCA Maintenance-Free Battery w/Run Down Protection- Auto Locking Hubs
 - Aux Battery- Brake Actuated Limited Slip Differential
 - Electro-Hydraulic Power Assist Steering- Engine Oil Cooler
 - Front And Rear Anti-Roll Bars- GVWR: 5,300 lbs- Gas-Pressurized Shock Absorbers
 - Leading Link Front Suspension w/Coil Springs- Manual Transfer Case
 - Normal Duty Suspension- Part-Time Four-Wheel Drive- Single Stainless Steel Exhaust
 - Stop-Start Dual Battery System- Towing Equipment -inc: Trailer Sway Control
 - Trailing Arm Rear Suspension w/Coil Springs
-

Auto Depot of Calexico

Auto Depot of Calexico

View this car on our website at autodepotcalexico.com/6851337

Website: autodepotcalexico.com

Phone: [760-357-0043](tel:760-357-0043)

Map: [747 Imperial Ave, Calexico, CA 92231](#)

