

# 2017 Ram ProMaster City Cargo Van Tradesman SLT

View this car on our website at [workvansandtrucks.com/6850949/ebrochure](http://workvansandtrucks.com/6850949/ebrochure)



Our Price **\$0**

Retail Value **\$21,500**

## Specifications:

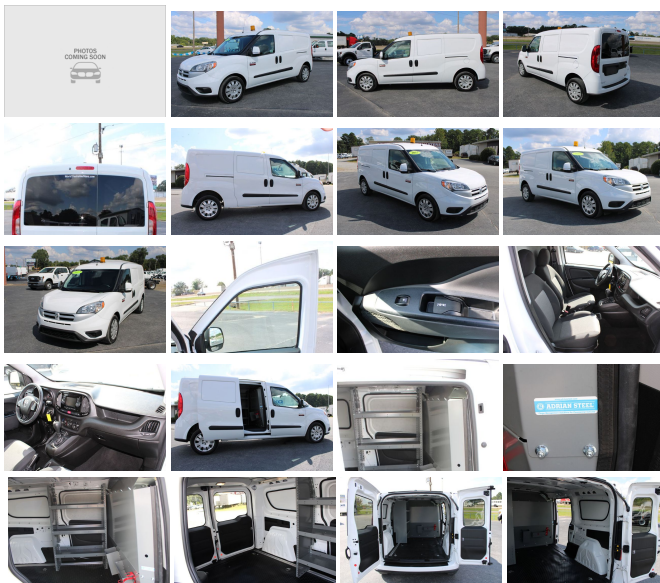
<b>Year:</b>	2017
<b>VIN:</b>	ZFBERFBB0H6G72992
<b>Make:</b>	Ram
<b>Stock:</b>	C2546
<b>Model/Trim:</b>	ProMaster City Cargo Van Tradesman SLT
<b>Condition:</b>	Pre-Owned
<b>Body:</b>	Minivan/Van
<b>Exterior:</b>	WHITE
<b>Engine:</b>	ENGINE: 2.4L I4 MULTIAIR
<b>Interior:</b>	Cloth
<b>Mileage:</b>	18,725
<b>Drivetrain:</b>	Front Wheel Drive
<b>Economy:</b>	City 21 / Highway 28

2017 RAM PROMASTER CITY SLT SWB CARGO VAN 2.4 4CYL GAS ENGINE, AUTOMATIC TRANSMISSION,

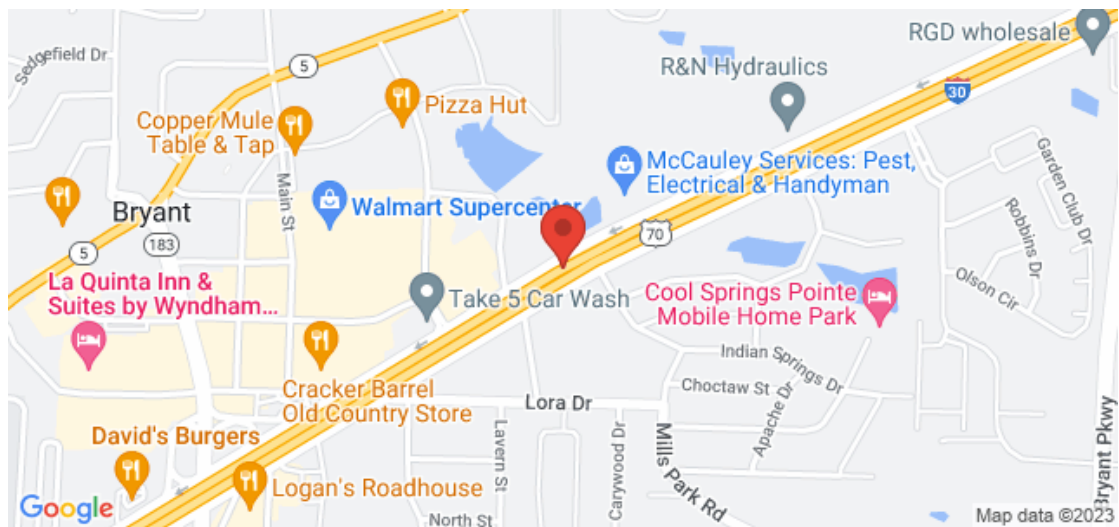
This Smaller City Cargo Van comes with Power Windows, Power Door Locks, Manual Mirrors, Cruise Control, Blue Tooth Phone Controls, Key Fob, Tilt Steering Wheel, am/fm/xm/touch screen radio, Traction Control, Heated Mirrors, Manual Shift Mode, Charging Ports, Cloth Seats, Backup Camera.

Adrian Steel Partition, Small Shelf Unit, Dual Sliding Side Doors, Barn Style Rear Doors, Rubber Cargo Mat, Yellow Safety Light.

Current Oil and Filter Service.



## Our Location :



2017 Ram ProMaster City Cargo Van Tradesman SLT

T & B Auto Sales - 501-847-2727 - View this car on our website at [workvansandtrucks.com/6850949/ebrochure](http://workvansandtrucks.com/6850949/ebrochure)

## Installed Options

### Interior

- Front Seats w/Cloth Back Material and Manual Driver Lumbar
- 6-Way Driver Seat -inc: Manual Recline, Height Adjustment, Fore/Aft Movement and Manual Lumbar Support
- 4-Way Passenger Seat -inc: Manual Recline and Fore/Aft Movement
- Delete Rear Seating- Manual Tilt/Telescoping Steering Column
- Gauges -inc: Speedometer, Odometer, Engine Coolant Temp, Tachometer, Trip Odometer and Trip Computer
- Leather Steering Wheel- Front Cupholder- Rear Cupholder
- Remote Keyless Entry w/Integrated Key Transmitter, 2 Door Curb/Courtesy and Illuminated Entry
- Cruise Control w/Steering Wheel Controls- Manual Air Conditioning- Locking Glove Box
- Driver Foot Rest- Full Cloth Headliner- Vinyl Door Trim Insert
- Urethane Gear Shifter Material- Premium Cloth Bucket Seats- Day-Night Rearview Mirror
- Driver And Passenger Visor Vanity Mirrors
- Full Overhead Console w/Storage, Conversation Mirror and 3 12V DC Power Outlets
- Front Map Lights- Fade-To-Off Interior Lighting- Front Only Vinyl/Rubber Floor Covering
- Cargo Compartment Trim- Cargo Features -inc: Spare Tire Mobility Kit
- Cargo Space Lights- 5.0" Touchscreen Display- Cargo Van Group
- Instrument Panel Bin, Covered Dashboard Storage, Interior Concealed Storage, Driver And Passenger Door Bins
- Power 1st Row Windows w/Driver And Passenger 1-Touch Up/Down
- Delayed Accessory Power- Power Door Locks w/Autolock Feature- Trip Computer
- Outside Temp Gauge- Analog Display- Driver And Front Passenger Armrests
- 2 Seatback Storage Pockets- Manual Adjustable Front Head Restraints
- Engine Immobilizer- Delete 2nd Row Side Curtain Air Bags - 3 12V DC Power Outlets
- Air Filtration

### Exterior

- Wheels: 16" x 6.5" Black Steel w/Full Cover - Tires: P215/55R16XL BWS AS

- Wheels w/Black Accents- Spare Tire Mobility Kit- Clearcoat Paint
- Body-Colored Front Bumper- Body-Colored Rear Bumper- Black Bodyside Moldings
- Black Side Windows Trim and Black Front Windshield Trim - Black Door Handles
- Body-Colored Power Heated Side Mirrors w/Manual Folding- Variable Intermittent Wipers
- Rear Doors - No Glass- Deep Tinted Glass- Galvanized Steel/Aluminum Panels
- Black Grille- Front License Plate Bracket- Side Sliding & Rear Doors Solid
- Right Sliding Door - No Glass- Left Sliding Door - No Glass
- Tailgate/Rear Door Lock Included w/Power Door Locks
- Aero-Composite Halogen Headlamps w/Delay-Off- LED Brakelights

## Safety

- Front Seats w/Cloth Back Material and Manual Driver Lumbar
- 6-Way Driver Seat -inc: Manual Recline, Height Adjustment, Fore/Aft Movement and Manual Lumbar Support
- 4-Way Passenger Seat -inc: Manual Recline and Fore/Aft Movement
- Delete Rear Seating- Manual Tilt/Telescoping Steering Column
- Gauges -inc: Speedometer, Odometer, Engine Coolant Temp, Tachometer, Trip Odometer and Trip Computer
- Leather Steering Wheel- Front Cupholder- Rear Cupholder
- Remote Keyless Entry w/Integrated Key Transmitter, 2 Door Curb/Courtesy and Illuminated Entry
- Cruise Control w/Steering Wheel Controls- Manual Air Conditioning- Locking Glove Box
- Driver Foot Rest- Full Cloth Headliner- Vinyl Door Trim Insert
- Urethane Gear Shifter Material- Premium Cloth Bucket Seats- Day-Night Rearview Mirror
- Driver And Passenger Visor Vanity Mirrors
- Full Overhead Console w/Storage, Conversation Mirror and 3 12V DC Power Outlets
- Front Map Lights- Fade-To-Off Interior Lighting- Front Only Vinyl/Rubber Floor Covering
- Cargo Compartment Trim- Cargo Features -inc: Spare Tire Mobility Kit
- Cargo Space Lights- 5.0" Touchscreen Display- Cargo Van Group
- Instrument Panel Bin, Covered Dashboard Storage, Interior Concealed Storage, Driver And Passenger Door Bins
- Power 1st Row Windows w/Driver And Passenger 1-Touch Up/Down
- Delayed Accessory Power- Power Door Locks w/Autolock Feature- Trip Computer
- Outside Temp Gauge- Analog Display- Driver And Front Passenger Armrests
- 2 Seatback Storage Pockets- Manual Adjustable Front Head Restraints
- Engine Immobilizer- Delete 2nd Row Side Curtain Air Bags - 3 12V DC Power Outlets
- Air Filtration

## Mechanical

- Engine: 2.4L I4 MultiAir- Transmission: 9-Speed 948TE Automatic- 3.73 Axle Ratio
- Heavy Duty Suspension- GVWR: 2,447 kgs (5,395 lbs)- 50 State Emissions
- Transmission w/Driver Selectable Mode and Sequential Shift Control- Front-Wheel Drive
- Engine Oil Cooler- Block Heater
- 95-Amp/Hr 700CCA Maintenance-Free Battery w/Run Down Protection
- 160 Amp Alternator- Towing Equipment -inc: Trailer Sway Control
- 1886# Maximum Payload- Gas-Pressurized Shock Absorbers
- Front And Rear HD Anti-Roll Bars- Hydraulic Power-Assist Steering- 16.1 Gal. Fuel Tank
- Single Stainless Steel Exhaust- Strut Front Suspension w/Coil Springs
- Multi-Link Rear Suspension w/Coil Springs
- Front Disc/Rear Drum Brakes w/4-Wheel ABS, Front Vented Discs, Brake Assist and Hill Hold Control
- Brake Actuated Limited Slip Differential

## Option Packages

### Factory Installed Packages

-  
ENGINE: 2.4L I4 MULTIAIR



[workvansandtrucks.com](http://workvansandtrucks.com)

501-847-2727

25637 I-30

Bryant, AR 72022

© 2023 AutoRevo - All rights reserved. - Powered by AutoRevo