

2018 Ram 5500 Chassis Cab Tradesman

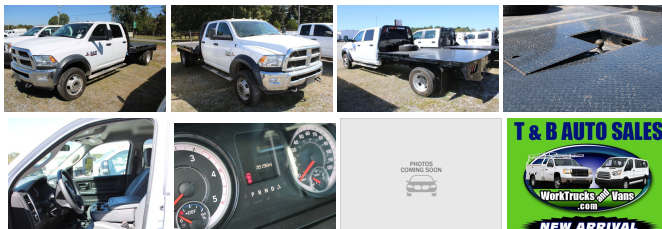
View this car on our website at workvansandtrucks.com/6849687/ebrochure



Our Price **\$0**

Specifications:

| | |
|--------------------|--------------------------------------|
| Year: | 2018 |
| VIN: | 3C7WRNFL0JG412319 |
| Make: | Ram |
| Stock: | F2558 |
| Model/Trim: | 5500 Chassis Cab Tradesman |
| Condition: | Pre-Owned |
| Body: | Pickup Truck |
| Exterior: | WHITE |
| Engine: | ENGINE: 6.7L I6 CUMMINS TURBO DIESEL |
| Mileage: | 35,174 |
| Drivetrain: | 4 Wheel Drive |



2018 Ram 5500 Chassis Cab Tradesman

T & B Auto Sales - 501-847-2727 - View this car on our website at workvansandtrucks.com/6849687/ebrochure

Our Location :



2018 Ram 5500 Chassis Cab Tradesman

T & B Auto Sales - 501-847-2727 - View this car on our website at workvansandtrucks.com/6849687/ebrochure

Installed Options

Interior

- Driver Seat- 4-Way Passenger Seat -inc: Manual Recline and Fore/Aft Movement
- Front Facing Vinyl Rear Seat- Manual Tilt Steering Column
- Gauges -inc: Speedometer, Odometer, Voltmeter, Oil Pressure, Engine Coolant Temp, Tachometer, Oil Temperature, Transmission Fluid Temp, Engine Hour Meter and Trip Odometer
- Power Rear Windows- Rear Folding Seat- Cruise Control w/Steering Wheel Controls
- Manual Air Conditioning- HVAC -inc: Underseat Ducts- Glove Box
- Interior Trim -inc: Deluxe Sound Insulation- Full Cloth Headliner
- Urethane Gear Shift Knob- HD Vinyl 40/20/40 Split Bench Seat
- Day-Night Rearview Mirror- Passenger Visor Vanity Mirror- 2 12V DC Power Outlets
- Partial Floor Console w/Storage and 2 12V DC Power Outlets
- Fade-To-Off Interior Lighting- Full Vinyl/Rubber Floor Covering
- Instrument Panel Bin, Dashboard Storage, Driver / Passenger And Rear Door Bins
- Delayed Accessory Power
- Power 1st Row Windows w/Driver And Passenger 1-Touch Up/Down
- Power Door Locks w/Autolock Feature- Systems Monitor
- Redundant Digital Speedometer- Analog Display- Seats w/Vinyl Back Material
- Manual Adjustable Front Head Restraints and Manual Adjustable Rear Head Restraints
- 40/20/40 Split Bench Seat- Manual Adjust Seats- Sentry Key Engine Immobilizer

Exterior

- Wheels: 19.5" x 6.0" Steel- Tires: 225/70R19.5G All Position FT, RR Traction
- Black Front Bumper w/2 Tow Hooks- Front License Plate Bracket
- Fully Automatic Aero-Composite Halogen Headlamps w/Delay-Off- Cab Clearance Lights
- Perimeter/Approach Lights- Exterior Mirrors Courtesy Lamps- Laminated Glass
- Black Fender Flares- Black Side Windows Trim and Black Front Windshield Trim
- Black Door Handles- Manual Extendable Trailer Style Mirrors
- Black Power Side Mirrors w/Convex Spotter and Manual Folding

- Exterior Mirrors w/Supplemental Signals- Exterior Mirrors w/Heating Element
- Fixed Rear Window- Light Tinted Glass- Variable Intermittent Wipers
- Fully Galvanized Steel Panels- Black Grille

Safety

- Driver Seat- 4-Way Passenger Seat -inc: Manual Recline and Fore/Aft Movement
- Front Facing Vinyl Rear Seat- Manual Tilt Steering Column
- Gauges -inc: Speedometer, Odometer, Voltmeter, Oil Pressure, Engine Coolant Temp, Tachometer, Oil Temperature, Transmission Fluid Temp, Engine Hour Meter and Trip Odometer
- Power Rear Windows- Rear Folding Seat- Cruise Control w/Steering Wheel Controls
- Manual Air Conditioning- HVAC -inc: Underseat Ducts- Glove Box
- Interior Trim -inc: Deluxe Sound Insulation- Full Cloth Headliner
- Urethane Gear Shift Knob- HD Vinyl 40/20/40 Split Bench Seat
- Day-Night Rearview Mirror- Passenger Visor Vanity Mirror- 2 12V DC Power Outlets
- Partial Floor Console w/Storage and 2 12V DC Power Outlets
- Fade-To-Off Interior Lighting- Full Vinyl/Rubber Floor Covering
- Instrument Panel Bin, Dashboard Storage, Driver / Passenger And Rear Door Bins
- Delayed Accessory Power
- Power 1st Row Windows w/Driver And Passenger 1-Touch Up/Down
- Power Door Locks w/Autolock Feature- Systems Monitor
- Redundant Digital Speedometer- Analog Display- Seats w/Vinyl Back Material
- Manual Adjustable Front Head Restraints and Manual Adjustable Rear Head Restraints
- 40/20/40 Split Bench Seat- Manual Adjust Seats- Sentry Key Engine Immobilizer

Mechanical

- Mechanical Limited Slip Differential- Uppfitter Switches
- 4-Wheel Disc Brakes w/4-Wheel ABS, Front And Rear Vented Discs
- Leaf Rear Suspension w/Leaf Springs- Leading Link Front Suspension w/Coil Springs
- Auto Locking Hubs- Single Stainless Steel Exhaust- 52 Gal. Fuel Tank
- Hydraulic Power-Assist Steering- Front Anti-Roll Bar and Rear HD Anti-Roll Bar
- HD Shock Absorbers- 10050# Maximum Payload- Trailer Wiring Harness
- Towing Equipment -inc: Trailer Sway Control- 180 Amp Alternator
- 730CCA Maintenance-Free Battery w/Run Down Protection- Engine Oil Cooler
- Part-Time Four-Wheel Drive- Manual Transfer Case
- Transmission w/Driver Selectable Mode, Sequential Shift Control and Oil Cooler
- Federal Emissions- GVWR: 18,000 lbs- 4.44 Axle Ratio
- Transmission: 6-Speed Auto Aisin AS66RC HD - Engine: 6.4L V8 Heavy Duty HEMI

Option Packages

Factory Installed Packages

ENGINE: 6.7L I6 CUMMINS TURBO
DIESEL

-inc: Selective Catalytic Reduction (Urea), Cummins Turbo Diesel Badge, Electronically Controlled Throttle, Current Generation Engine Controller, Smart Diesel Exhaust Brake, 87 mph Maximum Speed, RAM Active Air

Option Packages Total
\$7,745

T & B AUTO SALES



workvansandtrucks.com

501-847-2727

25637 I-30

Bryant, AR 72022

© 2022 AutoRevo - All rights reserved. - Powered by AutoRevo