

2005 Chevrolet Corvette

Website Price \$17,995

View this vehicle on our website at autoparkdallas.com



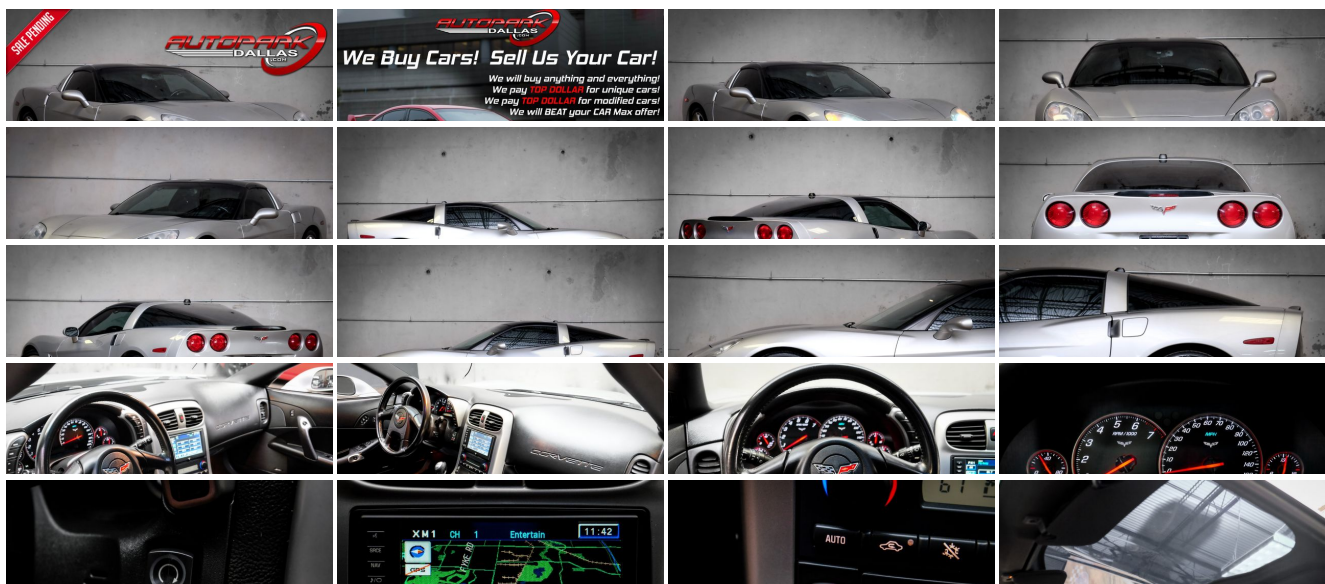
(214) 945-2601

2061 S Stemmons Fwy , Lewisville, TX 75067

Photos

Details

Contact



Specifications:

Year:	2005
VIN:	1G1YY24U555129889
Make:	Chevrolet
Model/Trim:	Corvette
Condition:	Pre-Owned
Body:	Coupe
Exterior:	Machine Silver Metallic
Engine:	ENGINE, 6.0L LS2 V8 SFI
Interior:	Ebony Leather
Transmission:	TRANSMISSION, 6-SPEED MANUAL, SHORT-THROW
Mileage:	100,036
Drivetrain:	Rear Wheel Drive
Economy:	City 18 / Highway 26

Vehicle Description

AutoPark Dallas is thrilled to offer you this Machine Silver Metallic 2005 Chevrolet Corvette with Z51 Performance Package for sale! There is not a single person that does not know what the Chevrolet Corvette is with its signature look and being the notorious low-profile sports car. These bald eagle screaming U.S. born beauties are a thrill to drive and always stand out in any crowded car meet or parking lot. Our Corvette here APD was handled with care as the condition of this Corvette is amazing, well loaded straight from the factory, and best of all has the Z51 Performance Package to give the extra 'Need for Speed' feel! Come swing by to check out this Corvette parked in our indoor 16,000 Sq Ft Showroom located in Dallas , Texas amongst our inventory of 100+ other Performance / Modified and Luxury cars!

2005 Chevrolet Corvette

* Clean CarFax !*

* Z51 Performance Package !*

* 1SB Preferred Equipment Group !*

Machine Silver Metallic Exterior

Transparent Removable T-Top

Ebony Black Leather Interior

* MagnaFlow Exhaust Tip w/ Muffler Delete !*

* K&N Washable Air Filter !*

Factory Navigation

Heated Front Row Seats

Dual Climate Controls

BOSE Premium Audio System

Digital Heads-Up Display

Driver Seat Memory

Cruise Control

Comfort Access Keyless Entry

Daytime Running Lights

6.0L LS2 V8 SFI Engine

6-Speed Manual Transmission

Rear Wheel Drive

Professionally Detailed!

Well Maintained!

* Free CarFax Report !*

AND SO MUCH MORE!!!

Financing is available!

Check out our Payment Calculator to get an estimate on your monthly payments!

OR

Get pre-approved in no time by filling out a credit application on the 'Finance' section of our website!

We also offer MANY different Extended Warranty options!

Check out our Google Reviews by *Clicking* this LINK!

Referrals and Testimonials is what our business is built on!

The team here at AutoPark Dallas, is dedicated to offering a level of customer service not usually found in the automobile industry. Thanks to years of extensive car buying / selling experience, we pursue quality used and new vehicles that are hand-picked from factory sources. Our love for automobiles and dislike of traditional dealership tactics is what motivates us to provide the service we do! The pride we take in continuing this service long after the vehicle has been delivered is what we strive for! Looking forward to making every effort to see that our customer is completely satisfied and a friend for life!

Pre-purchase inspections are always welcomed!

We also offer airport pick-up, competitive financing options, free CarFax Reports, Car Shipping nationwide, Extended Warranty plans, and so much more!

Trade-In(s) are always accepted or sell us your used car (MODIFIED OR NOT)! Please call or text for more information about Trade-Ins or selling your car to us @ (214) 945-2601!

#(214) 945-2601

Call or Text **Anytime!**

Se habla Español

WE BUY CARS!

WWW.AUTOPARKDALLAS.COM

Installed Options

Interior

- Air conditioning, dual-zone, automatic, includes individual climate settings for driver and right front passenger, automatic climate control and outside temperature display
- Air filtration, includes pollen filter - Antenna, integral, hidden
- Console, floor, lockable, includes 2 covered cupholders, ashtray with cigar lighter, auxiliary power outlet and CD storage

Option Packages

Factory Installed Packages

ENGINE, 6.0L LS2 V8 SFI
(400 HP [298.3 kW] @ 6000 rpm, 400 lb.-ft.
[542.8 N-m] @ 4400 rpm)

- Cruise control, electronic with set and resume speed - Defogger, rear-window, electric
- Door locks, power, programmable, includes lockout protection- Floor mats, carpeted
- Hatch release, push button open, includes power hatch pulldown
- Ignition, keyless, engaged with push button start
- Instrumentation, analog, electronic, includes Driver Information Center with 2 line display
- Keyless Access, with push-button start, includes 2 remote transmitters which enable automatic door unlock and open by touching door switch
- Lighting, interior, courtesy, cargo and glovebox
- Mirror, inside rearview, manual day/night, includes dual reading lights
- Oil life monitoring system- Seat adjuster, power, driver 6-way
- Seats, front bucket with leather seating surfaces, includes back angle adjustment
- Sound system, ETR AM/FM stereo with CD player and MP3 playback, includes Radio Data System, seek-and-scan, digital clock, auto-tone control, automatic volume, Theftlock and (U66) Sound system feature, 7-speaker system
- Steering column, manual, Tilt-Wheel- Steering wheel, leather-wrapped
- Storage, includes lockable glovebox, center console and 2 rear compartments with covers
- Theft-deterrent system, push button start, immobilizer and audible visual alarm
- Tire Pressure Monitor System, air pressure sensors in each tire pressure display in Driver Information Center
- Visors, illuminated vanity mirrors, driver and front passenger
- Windows, power, includes driver and passenger express-down

Exterior

- Daytime running lamps- Fog lamps, front, integral in fascia- Glass, Solar-Ray light tinted
- Headlamps, bi-functional, Xenon, high-intensity discharge, includes automatic exterior lamp control
- Mirrors, outside rearview, power, heated, body-color
- Roof panel, removable, 1-piece, body-color- Wipers, intermittent, front

Safety

- Air conditioning, dual-zone, automatic, includes individual climate settings for driver and right front passenger, automatic climate control and outside temperature display
- Air filtration, includes pollen filter - Antenna, integral, hidden
- Console, floor, lockable, includes 2 covered cupholders, ashtray with cigar lighter, auxiliary power outlet and CD storage
- Cruise control, electronic with set and resume speed - Defogger, rear-window, electric
- Door locks, power, programmable, includes lockout protection- Floor mats, carpeted
- Hatch release, push button open, includes power hatch pulldown
- Ignition, keyless, engaged with push button start
- Instrumentation, analog, electronic, includes Driver Information Center with 2 line display
- Keyless Access, with push-button start, includes 2 remote transmitters which enable automatic door unlock and open by touching door switch
- Lighting, interior, courtesy, cargo and glovebox
- Mirror, inside rearview, manual day/night, includes dual reading lights
- Oil life monitoring system- Seat adjuster, power, driver 6-way
- Seats, front bucket with leather seating surfaces, includes back angle adjustment
- Sound system, ETR AM/FM stereo with CD player and MP3 playback, includes Radio Data System, seek-and-scan, digital clock, auto-tone control, automatic volume, Theftlock and (U66) Sound system feature, 7-speaker system
- Steering column, manual, Tilt-Wheel- Steering wheel, leather-wrapped
- Storage, includes lockable glovebox, center console and 2 rear compartments with covers
- Theft-deterrent system, push button start, immobilizer and audible visual alarm
- Tire Pressure Monitor System, air pressure sensors in each tire pressure display in Driver Information Center
- Visors, illuminated vanity mirrors, driver and front passenger
- Windows, power, includes driver and passenger express-down

Mechanical

- Wheels, 5-spoke painted aluminum, 18" x 8.5" (45.7 cm x 21.6 cm), front and 19" x 10.0" (48.3 cm x 25.4 cm), rear
- Active handling, improves traction and enhances vehicle stability
- Axle, 3.42 ratio, limited slip (Included and only available with (MN6) Transmission, 6-speed manual.)
- Brakes, 4-wheel antilock, 4-wheel disc
- Engine access, rear opening hood, includes underhood lamp
- Engine, 6.0L LS2 V8 SFI (400 HP [298.3 kW] @ 6000 rpm, 400 lb.-ft. [542.8 N-m @ 4400 rpm)
- Exhaust, aluminized stainless-steel with polished 3" stainless-steel tips
- Fuel capacity, approximate, 18 gallon (68 liters) - Rear wheel drive
- Steering, power, speed-sensitive, rack and pinion
- Suspension, 4-wheel independent, includes transverse fiberglass leaf springs
- Tires, front P245/40ZR18, extended mobility, Eagle F1
- Tires, rear P285/35ZR19, extended mobility, Eagle F1 - Traction control, all-speed

TRANSMISSION, 6-SPEED MANUAL, SHORT-THROW
(Includes (GU6) Axle, 3.42 ratio)

AIR BAGS, FRONTAL AND SIDE IMPACT, DRIVER AND FRONT PASSENGER

(Always use safety belts and proper child restraints, even with air bags. See the Owners Manual for more safety information.)

HEAD-UP DISPLAY

includes dot-matrix readouts for street mode, track mode with g-meter, vehicle speed, engine rpm, and readings from key gauges including water temperature and oil pressure

HOMELINK TRANSMITTER

includes garage door opener, 3-channel programmable, located on driver visor

LICENSE PLATE BRACKET, FRONT

MEMORY PACKAGE

2 driver settings, remembers "presets" for 6-way power seat, outside mirrors, climate control, radio presets and telescoping steering column

PERFORMANCE HANDLING PACKAGE

performance-oriented package for the Gymkhana/Autocross enthusiast, includes power steering, engine oil and transmission coolers, stiffer springs and stabilizer bars, specific shock absorbers, larger brakes with cross-drilled rotors, specific tires and performance gearing, Z51-specific, 6-speed manual transmission or performance axle ratio with automatic transmission

\$1,695

ROOF PANEL, REMOVABLE, 1-PIECE, TRANSPARENT
(Included with (C2L) Roof Package.)

\$750

SOUND SYSTEM FEATURE, XM SATELLITE RADIO.

features 67 channels of 100% commercial-free music included in its over 150 channels of the best in music, news, sports, talk, comedy, XM Instant Traffic and Weather, and more. Digital quality sound with coast-to-coast signal coverage. Three trial months-no obligation.

\$325

AXLE, 3.42 RATIO, LIMITED SLIP

EMISSIONS, FEDERAL REQUIREMENTS

SOLID PAINT

PREFERRED EQUIPMENT GROUP

includes (AJ7) Air bags, frontal and side impact, driver and front passenger, Cargo convenience net, in rear compartment area, (UV6) Head-Up Display, (UG1) Homelink transmitter, (D42) Luggage shade, (AAB) Memory Package, (DD0) Mirrors, inside rearview with compass and driver outside rearview, auto-dimming, (AG2) Seat adjuster, power, front passenger 6-way, (AQ9) Seats, front Sport bucket with perforated leather seating surfaces, (KA1) Seats, heated, driver and passenger, (US9) Sound system, ETR AM/FM stereo with 6-disc, in dash CD changer, MP3 playback, (N37) Steering column, power telescopic, includes manual tilt

\$4,360

SOUND SYSTEM WITH NAVIGATION

ETR AM/FM stereo with CD player, (U65) Sound system feature, Bose premium 7-speaker system, DVD navigation with GPS, 6.5" LCD color display touch screen, voice recognition. includes Radio Data System. seek-

\$1,600

- Transmission, 6-speed manual, short-throw (Includes (GU6) Axle, 3.42 ratio.)

and-scan, digital clock, auto-tone control,
automatic volume and TheftLock

HIGHWEAR NUANCE LEATHER SEAT TRIM

SEATS, FRONT SPORT BUCKET WITH PERFORATED
LEATHER SEATING SURFACES

includes back angle adjustment, adjustable
lumbar and side bolsters

WHEELS, POLISHED, 5-SPOKE ALUMINUM, 18" x 8.5" (45.7 CM
x 21.6 CM), FRONT AND 19" x 10.0" (48.3 CM x 25.4 CM), REAR
\$1,295

Option Packages Total

\$10,025



Auto Park Dallas

View this car on our website at autoparkdallas.com/6848847

Website: autoparkdallas.com

Phone: (214) 945-2601

Map: [2061 S Stemmons Fwy, Lewisville, TX 75067](#)

