

2018 Chevrolet Camaro SS 1LE Track Performance Package

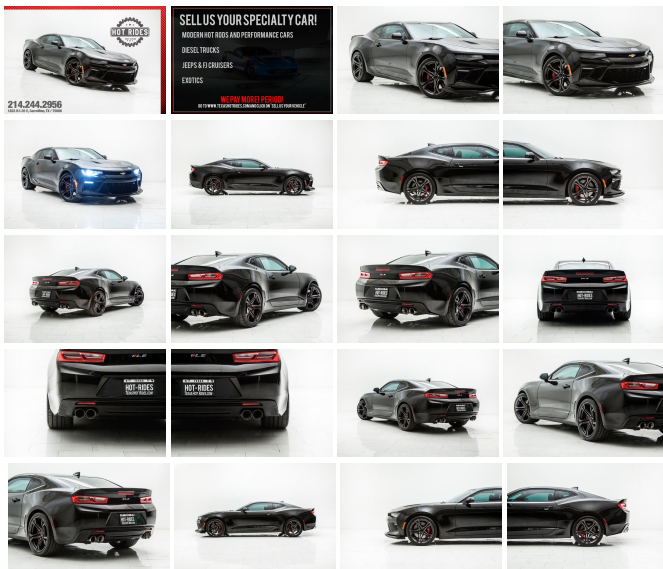
View this car on our website at texashotrides.com/6848640/ebrochure



Our Price **\$37,991**

Specifications:

Year:	2018
VIN:	1G1FE1R73J0165052
Make:	Chevrolet
Stock:	820088
Model/Trim:	Camaro SS 1LE Track Performance Package
Condition:	Pre-Owned
Body:	Coupe
Exterior:	Mosaic Black Metallic
Engine:	ENGINE, 6.2L (376 CI) V8 DI, VVT
Interior:	Black Suede/Leather
Transmission:	TRANSMISSION, 6-SPEED MANUAL
Mileage:	29,725
Drivetrain:	Rear Wheel Drive
Economy:	City 16 / Highway 25



2018 CHEVROLET CAMARO SS 1LE IN BLACK!

WE FINANCE!

BEAUTIFUL GLOSS BLACK EXTERIOR
LUXURIOUS BLACK LEATHER & SUEDE

LUXURIOUS BLACK LEATHER & SUEDE
INTERIOR

POWERFUL 6.2L LT1 V8 ENGINE

SMOOTH 6-SPEED MANUAL
TRANSMISSION

SUPER RARE 1LE TRACK
PERFORMANCE PACKAGE

RECARO SEATING PACKAGE

RARE MAGNETIC RIDE CONTROL
SUSPENSION

1LE PERFORMANCE SUSPENSION

NPP BI MODE PERFORMANCE
EXHAUST

SUEDE INTERIOR PACKAGE

SIGNATURE 1LE SATIN BLACK HOOD

HEADS UP DISPLAY

RED BREMBO BRAKE PACKAGE

WIRELESS PHONE CONNECTIVITY

EXTREMELY LOW MILES

TINTED WINDOWS

UPGRADED FLOWMASTER CATBACK
EXHAUST SYSTEM

FACTORY WARRANTY STILL
REMAINING

EXTENDED WARRANTY OPTIONS
AVAILABLE!

EXCELLENT FINANCING OPTIONS
AVAILABLE!

*This car is a MUST SEE!! If you are
considering a CAMARO SS you MUST
CALL FOR ADDITIONAL
INFORMATION!*

Contact our sales team at:

214-244-2956

As always, we welcome third party inspections! We offer finance options, We take trade-ins, free airport pick up, world-wide shipping, extended warranties, installation of additional desired items, and MUCH MORE! We are a full service dealership.

HOURS OF OPERATION:

Monday - Friday 10am - 6pm
C.S.T

Saturday: By appointment, 10-4

2018 Chevrolet Camaro SS 1LE Track Performance Package

Texas Hot Rides - 214-244-2956 - View this car on our website at texashotrides.com/6848640/ebrochure

Vehicle History Report : as Of 09/28/2020

 Snapshot

2018 CHEVROLET CAMARO SS

	Accident reported: minor damage
	2 Previous owners
	11 Service history records
	Personal vehicle
	Last owned in Texas
	29,716 Last reported odometer reading



FREE CARFAX Report

See the full CARFAX Report for additional information

*carfax Snapshot is a reflection of available information on the date the report was pulled. carfax is constantly being updated with new information and is subject to change at any time.

Our Location :



2018 Chevrolet Camaro SS 1LE Track Performance Package

Texas Hot Rides - 214-244-2956 - View this car on our website at texashotrides.com/6848640/ebrochure

Installed Options

Interior

- Air conditioning, single-zone automatic climate control- Compass display
- Cruise control, electronic with set and resume speed, steering wheel mounted
- Cup holders, 2 front- Dead pedal, driver- Defogger, rear-window, electric
- Door locks, power programmable with lockout protection
- Driver Information Center, enhanced, 8" diagonal multi-color re-configurable display
- Floor mats, carpeted front- Glovebox, lockable
- Keyless Open and Start includes 2 remote transmitters that enable automatic door unlock and open by touching door switch
- Lighting, front reading lamps- Mirror, inside rearview manual day/night, frameless
- Power outlet, 1 located on center console- Seat adjuster, driver, 8-way power
- Seat adjuster, front passenger, 6-way power- Seat, rear, folding
- Seats, Cloth front Sport bucket - Shift knob, leather-wrapped
- Speedometer, miles/kilometers- Steering column, manual rake and telescopic
- Steering wheel, leather-wrapped, flat-bottom
- Theft-deterrent system, electrical, unauthorized entry- Trunk release, power
- Visors, driver and front passenger vanity mirrors, covered, illuminated
- Windows, power with driver and passenger Express-Down/Up

Exterior

- Headlamps, high intensity discharge with automatic exterior lamp control
- Mirrors, outside power-adjustable, body-color- Spoiler, rear, stanchion
- Tires, 245/40ZR20 front and 275/35ZR20 rear, blackwall, summer-only, run-flat (Do not use summer only tires in winter conditions, as it would adversely affect vehicle safety, performance and durability. Use only GM-approved tire and wheel combinations. Unapproved combinations may change the vehicle's performance characteristics. For important tire and wheel information, go to <https://my.chevrolet.com/learnAbout/chevrolettires> or see your dealer.)
- Wheels, 20" x 8.5" (50.8 cm x 21.6 cm) front and 20" x 9.5" (50.8 cm x 24.1 cm) rear bright 5-spoke Silver-painted aluminum

- Wipers, front variable-speed, intermittent with washers

Safety

- Air conditioning, single-zone automatic climate control- Compass display
- Cruise control, electronic with set and resume speed, steering wheel mounted
- Cup holders, 2 front- Dead pedal, driver- Defogger, rear-window, electric
- Door locks, power programmable with lockout protection
- Driver Information Center, enhanced, 8" diagonal multi-color re-configurable display
- Floor mats, carpeted front- Glovebox, lockable
- Keyless Open and Start includes 2 remote transmitters that enable automatic door unlock and open by touching door switch
- Lighting, front reading lamps- Mirror, inside rearview manual day/night, frameless
- Power outlet, 1 located on center console- Seat adjuster, driver, 8-way power
- Seat adjuster, front passenger, 6-way power- Seat, rear, folding
- Seats, Cloth front Sport bucket- Shift knob, leather-wrapped
- Speedometer, miles/kilometers- Steering column, manual rake and telescopic
- Steering wheel, leather-wrapped, flat-bottom
- Theft-deterrent system, electrical, unauthorized entry- Trunk release, power
- Visors, driver and front passenger vanity mirrors, covered, illuminated
- Windows, power with driver and passenger Express-Down/Up

Mechanical

- Battery rundown protection
- Brakes, Brembo 4-piston front and rear, performance, 4-wheel antilock, 4-wheel disc
- Cooler, engine coolant, auxiliary- Cooler, rear differential- Cooler, transmission oil
- Cooling system, extra capacity- Cooling, external engine oil cooler
- Differential, limited slip
- Driver Selector Mode up to 4 modes available for various driving conditions - Snow/Ice, Tour, Sport and Track (SS and ZL1 models only)
- Engine, 6.2L (376 ci) V8 DI, VVT (455 hp [339.3 kW] @ 6000 rpm, 455 lb-ft of torque [614.3 N-m] @ 4400 rpm)
- Exhaust, dual-outlet stainless-steel with bright tips- Fueling system, capless
- Rear axle, 3.73 ratio (Included with (MN6) 6-speed manual transmission.)
- Rear wheel drive- Steering, power, variable ratio, electric- Suspension, Performance
- Transmission, 6-speed manual (Includes Active Rev Matching.)

Option Packages

Factory Installed Packages

ENGINE, 6.2L (376 CI) V8 DI, VVT
(455 hp [339.3 kW] @ 6000 rpm,
455 lb-ft of torque [614.3 N-m]
@ 4400 rpm)

TRANSMISSION, 6-SPEED MANUAL
(Includes Active Rev Matching.)

BRAKES, BREMBO RED, 6-PISTON
FRONT MONOBLOC CALIPERS, 4-
PISTON REAR CALIPERS, 2-PIECE
ROTORs, PERFORMANCE, 4-WHEEL
ANTILOCK, 4-WHEEL DISC

DIFFERENTIAL, ELECTRONIC LIMITED
SLIP (ELSD)

EXHAUST, DUAL-MODE,
PERFORMANCE

\$895

FRONT SPLITTER
(Satin Black.)

HEAD-UP DISPLAY
with color digital readouts for vehicle speed, selected gear, G-Force, audio system information, high-beam indicator, compass, outside air temperature, turn signals, tachometer, vehicle messages, Turn-by-Turn information and phone information

HOOD WRAP, SATIN BLACK

LPO, FLOOR MATS, PREMIUM CARPETED WITH 1LE PERFORMANCE LOGO \$160

MAGNETIC RIDE CONTROL \$1,695

SHIFT KNOB, SUEDED MICROFIBER-WRAPPED

SPOILER, REAR, BLADE, SATIN BLACK

SS 1LE TRACK PERFORMANCE PACKAGE \$7,000
(J6M) Brembo Red, 6-piston front monobloc calipers, 4-piston rear calipers, 2-piece rotors, performance, 4-wheel antilock, 4-wheel disc brakes, (G96) electronic limited slip differential, (NPP) dual-mode performance exhaust, (F55) Magnetic Ride Control, (FE4) performance suspension, (FTJ) Satin Black front splitter, (DSM) Satin Black hood wrap, (D5S) Satin Black rear blade spoiler, (R0G) 285/30R20 front and 305/30R20 rear, blackwall, summer-only tires, (RSK) 20" x 10" front and 20" x 11" rear Satin Graphite forged aluminum wheels, (AQJ) RECARO performance front bucket seats, (N26) sueded-wrapped, flat-bottom steering wheel and (KS9) sueded-wrapped shift knob

STEERING WHEEL, SUEDED MICROFIBER-WRAPPED, FLAT-BOTTOM

SUSPENSION, PERFORMANCE

REAR AXLE, 3.73 RATIO

MOSAIC BLACK METALLIC

1SS PREFERRED EQUIPMENT GROUP,
includes Standard Equipment

AUDIO SYSTEM, CHEVROLET MYLINK RADIO WITH 8" DIAGONAL COLOR TOUCH-SCREEN, AM/FM STEREO WITH SEEK-AND-SCAN AND DIGITAL CLOCK
includes Bluetooth streaming

audio for music and select phones; voice-activated technology for radio and phone; featuring Android Auto and Apple CarPlay capability for compatible phone and Shop with the ability to browse, select and install apps to your vehicle. Apps include Pandora, iHeartRadio, The Weather Channel and more

-
JET BLACK, SEAT TRIM

-
SEATS, LEATHER-TRIMMED WITH SUEDED INSERTS FRONT BUCKET, RECARO PERFORMANCE
\$1,595

-
WHEELS, 20" X 10" (50.8 CM X 25.4 CM) FRONT AND 20" X 11" (50.8 CM X 27.9 CM) REAR SATIN GRAPHITE FORGED ALUMINUM

-
Option Packages Total
\$11,345

Texas Hot Rides

texashotrides.com

214-244-2956

1833 N Interstate 35E

Carrollton, TX 75006

© 2020 AutoRevo - All rights reserved. - Powered by AutoRevo