

2020 Chevrolet Silverado 1500 RST

View this car on our website at parksdeals.com/6848224/ebrochure



Our Price **\$46,411**

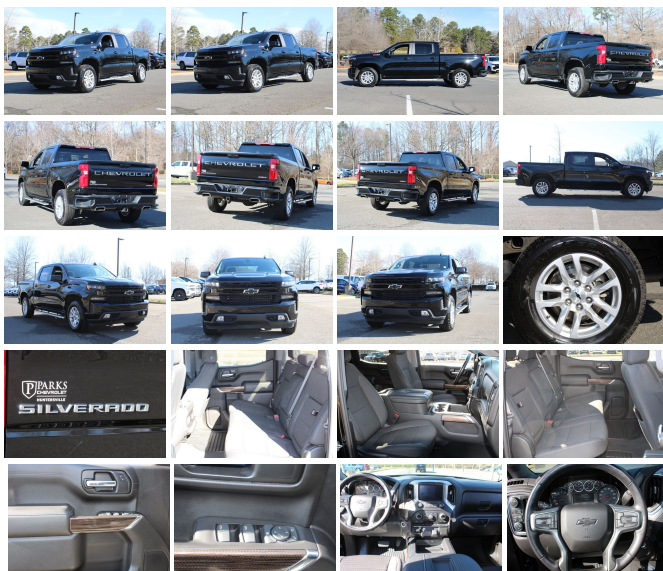
Specifications:

Year:	2020
VIN:	3GCUYEED5LG435891
Make:	Chevrolet
Stock:	135308A
Model/Trim:	Silverado 1500 RST
Condition:	Pre-Owned
Body:	Pickup Truck
Exterior:	Black
Engine:	ENGINE, 5.3L ECOTEC3 V8
Interior:	Jet Black Cloth
Mileage:	50,112
Drivetrain:	4 Wheel Drive
Economy:	City 16 / Highway 22

GM CERTIFIED!!!!

RST, Z-71!! LOCAL TRADE IN!! 2020 Chevrolet Silverado 1500 RST 8-Speed Automatic, 4WD, Black Cloth, We Deliver. CARFAX One-Owner. Clean CARFAX.

\$1000 - Dealer Trade-in Allowance (Must own and trade a 2015 or newer passenger vehicle to qualify for the Dealer Trade-in Allowance), Allowance is \$1000 above True Car Cash Offer. This offer is based on the current condition of the vehicle and must be appraised at the Dealership to receive the Trade-In Allowance. \$1000 is reflected in the vehicle discount. \$1000 - Dealer Finance Discount (Must qualify and finance with GM Financial, not available with special financing rates or programs.) You may or may not qualify for all rebates. Price does not include tax, tag, and fees. Price does not include any aftermarket products, bodies, or upfits. Price includes applicable rebates: Contact us online at www.parkschevrolethuntersville.com or give us a call at (704) 875-6558 to have your questions answered, obtain a price quote for this vehicle, or schedule your test drive today. Our prices cannot be beat! Come visit us at 15235 STATESVILLE ROAD HUNTERSVILLE NC 28078.



Vehicle History Report : as Of 04/20/2024



Snapshot

2020 CHEVROLET SILVERADO 1500 RST



No accidents or damage reported to CARFAX



16 Service history records



2 Previous owners



Personal vehicle



Last owned in North Carolina



74,874 Last reported odometer reading



FREE CARFAX Report

See the full CARFAX Report for additional information

*carfax Snapshot is a reflection of available information on the date the report was pulled. carfax is constantly being updated with new information and is subject to change at any time.

Our Location :



2020 Chevrolet Silverado 1500 RST

Parks Chevrolet, Inc. - 833-825-2763 - View this car on our website at parksdeals.com/6848224/ebrochure

Installed Options

Interior

- Seats, front 40/20/40 split-bench with covered armrest storage and under-seat storage (lockable) (Not available with (PCH) Convenience Package with Bucket Seats.)
- Seat trim, Cloth
- Seat, rear 60/40 folding bench (folds up), 3-passenger (includes child seat top tether anchor)
- Floor mats, rubberized vinyl, front (Deleted when LPO floor liners are ordered.)
- Floor mats, rubberized vinyl rear (Deleted when LPO floor liners are ordered.)
- Steering column, Tilt-Wheel, manual with wheel locking security feature
- Window, power front, passenger express down- Windows, power rear, express down
- Door locks, power- Keyless Open and Start- Power outlet, front auxiliary, 12-volt
- USB ports, 2 (first row) located on instrument panel- Power outlet, rear auxiliary, 12-volt
- Air conditioning, single-zone manual, semi-automatic- Air vents, rear, heating/cooling
- Defogger, rear-window electric- Seat adjuster, driver 4-way manual
- Seat adjuster, passenger 4-way manual- Floor covering, color-keyed carpeting
- Steering wheel, urethane- Steering wheel audio controls
- Steering column, lock control, electrical
- Instrument cluster, 6-gauge cluster featuring speedometer, fuel level, engine temperature, tachometer, voltage and oil pressure
- Driver Information Center, 4.2" diagonal color display includes driver personalization

Option Packages

Factory Installed Packages

ENGINE, 5.3L ECOTEC3 V8 (355 hp [265 kW] @ 5600 rpm, 383 lb-ft of torque [518 Nm] @ 4100 rpm); featuring all-new Dynamic Fuel Management that enables the engine to operate in 17 different patterns between 2 and 8 cylinders, depending on demand, to optimize power delivery and efficiency	\$1,395
Option Packages Total	\$1,395

- Exterior Temperature Display located in radio display
- Compass located in instrument cluster- Rear Seat Reminder
- Window, power front, drivers express up/down- Remote vehicle starter system
- Cruise control, electronic with set and resume speed, steering wheel-mounted
- Theft-deterrent system, unauthorized entry- USB ports, dual, charge-only (2nd row)
- Mirror, inside rearview, manual tilt
- Assist handles front A-pillar mounted for driver and passenger, rear B-pillar mounted
- Chevrolet Connected Access capable (Subject to terms. See onstar.com or dealer for details.)

Exterior

- Wheels, 18" x 8.5" (45.7 cm x 21.6 cm) Bright Silver painted aluminum
- Tires, 265/65R18SL all-season, blackwall- Tire, spare 265/70R17SL all-season, blackwall
- Headlamps, LED reflector with LED signature Daytime Running Lamps
- Mirrors, outside heated power-adjustable (When (PQB) Safety Package is ordered, includes Perimeter Lighting.)
- Tire carrier lock, keyed cylinder lock that utilizes same key as ignition and door
- Bumper, front (Body-color.)- Bumper, rear (Body-color.)- CornerStep, rear bumper
- Recovery hooks, front, frame-mounted, black
- Cargo tie downs (12), fixed rated at 500 lbs per corner
- Grille (Body color bars with high gloss Black mesh inserts.) - Black Bowtie, (front grille)
- Fog lamps, front, LED
- Lamps, cargo area, cab mounted integrated with center high mount stop lamp, with switch in bank on left side of steering wheel
- LED Cargo Area Lighting located in pickup bed, activated with switch on center switch bank or key fob
- Taillamps, LED with signature
- Mirror caps, painted (High gloss Black. Not available with (DPO) trailering mirrors.)
- Glass, deep-tinted- Door handles, body-color- Tailgate and bed rail protection cap, top
- Tailgate, gate function manual with EZ Lift, includes power lock and release

Safety

- Seats, front 40/20/40 split-bench with covered armrest storage and under-seat storage (lockable) (Not available with (PCH) Convenience Package with Bucket Seats.)
- Seat trim, Cloth
- Seat, rear 60/40 folding bench (folds up), 3-passenger (includes child seat top tether anchor)
- Floor mats, rubberized vinyl, front (Deleted when LPO floor liners are ordered.)
- Floor mats, rubberized vinyl rear (Deleted when LPO floor liners are ordered.)
- Steering column, Tilt-Wheel, manual with wheel locking security feature
- Window, power front, passenger express down- Windows, power rear, express down
- Door locks, power- Keyless Open and Start- Power outlet, front auxiliary, 12-volt
- USB ports, 2 (first row) located on instrument panel- Power outlet, rear auxiliary, 12-volt
- Air conditioning, single-zone manual, semi-automatic- Air vents, rear, heating/cooling
- Defogger, rear-window electric- Seat adjuster, driver 4-way manual
- Seat adjuster, passenger 4-way manual- Floor covering, color-keyed carpeting
- Steering wheel, urethane- Steering wheel audio controls
- Steering column, lock control, electrical
- Instrument cluster, 6-gauge cluster featuring speedometer, fuel level, engine temperature, tachometer, voltage and oil pressure
- Driver Information Center, 4.2" diagonal color display includes driver personalization
- Exterior Temperature Display located in radio display
- Compass located in instrument cluster- Rear Seat Reminder
- Window, power front, drivers express up/down- Remote vehicle starter system
- Cruise control, electronic with set and resume speed, steering wheel-mounted
- Theft-deterrent system, unauthorized entry- USB ports, dual, charge-only (2nd row)
- Mirror, inside rearview, manual tilt
- Assist handles front A-pillar mounted for driver and passenger, rear B-pillar mounted
- Chevrolet Connected Access capable (Subject to terms. See onstar.com or dealer for details.)

Mechanical

- Engine, 2.7L Turbo (310 hp [231 kW] @ 5600 rpm, 348 lb-ft of torque [471 Nm] @ 1500 rpm) (Not available with (Z71) Z71 Off-Road Package.)
- Transmission, 8-speed automatic, electronically controlled with overdrive and tow/haul mode. Includes Cruise Grade Braking and Powertrain Grade Braking (Included and only available with (L3B) 2.7L Turbo engine or (L84) 5.3L EcoTec3 V8 engine.)
- Rear axle, 3.42 ratio (Included with (L84) 5.3L EcoTec3 V8 engine or (L87) 6.2L EcoTec3 V8 engine and (NHT) Max Trailering Package.)
- Durabed, pickup bed
- GVWR, 7000 lbs. (3175 kg) (Requires Crew Cab or Double Cab 4WD model and (L3B) 2.7L Turbo engine.)

- Automatic Stop/Start
 - Transfer case, single speed electronic Autotrac with rotary dial control (4WD models only)
 - Four wheel drive
 - Battery, heavy-duty 730 cold-cranking amps/80 Amp-hr, maintenance-free with rundown protection and retained accessory power (Included and only available with (L3B) 2.7L Turbo engine, (L84) 5.3L EcoTec3 V8 engine or (L87) 6.2L EcoTec3 V8 engine.)
 - Alternator, 220 amps (Included and only available with (L3B) 2.7L Turbo engine, (LM2) Duramax 3.0L Turbo-Diesel I6 engine or (NHT) Max Trailering Package.)
 - Frame, fully-boxed, hydroformed front section
 - Steering, Electric Power Steering (EPS) assist, rack-and-pinion
 - Brakes, 4-wheel antilock, 4-wheel disc with DURALIFE rotors- Brake lining wear indicator
 - Capless Fuel Fill- Exhaust, single outlet
-

Parks Chevrolet, Inc.

parksdeals.com

833-825-2763

615 NC-66 South

Kernersville, NC 27284

© 2024 AutoRevo - All rights reserved. - Powered by AutoRevo