

3075 Leon Rd
Jacksonville , FL 32246

2005 Jeep Wrangler Rubicon Lifted

Nolan Hill

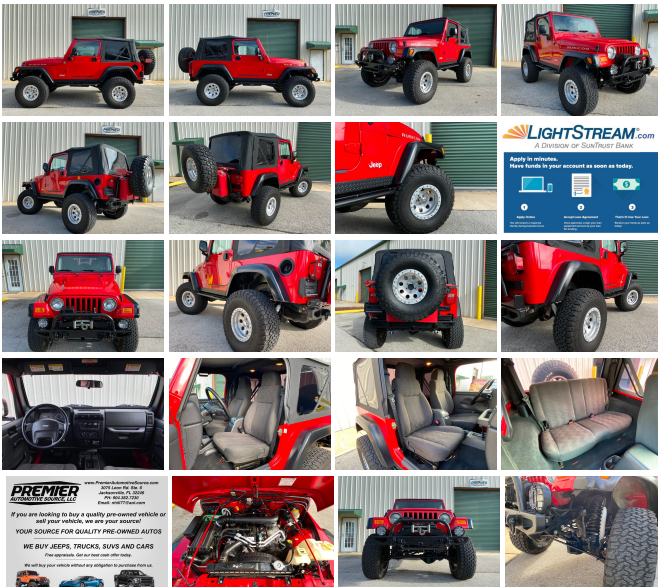
View this car on our website at premierautomotivesource.com/6847921/ebrochure



Our Price **\$0**

Specifications:

Year:	2005
VIN:	1J4FA69S95P379670
Make:	Jeep
Model/Trim:	Wrangler Rubicon Lifted
Condition:	Pre-Owned
Body:	SUV
Exterior:	Flame Red
Engine:	4.0L SMPI I6 "POWER TECH" ENGINE
Interior:	Dark Slate Gray Cloth
Transmission:	4-SPEED AUTOMATIC TRANSMISSION
Mileage:	62,850
Drivetrain:	4 Wheel Drive
Economy:	City 14 / Highway 18



2005 JEEP WRANGLER RUBICON TJ

- LEGENDARY 4.0 INLINE 6 CYL ENGINE -
- AUTOMATIC TRANSMISSION -
- FACTORY DANA 44'S FRONT & REAR -
- FACTORY 4.10 GEARS -
- FACTORY LOCKERS -
- STEEL FRONT & REAR BUMPERS -
- FULL TRACTION 6" LONG ARM SUSPENSION LIFT -
- ROCK RAILS -
- MICKEY THOMPSON WHEELS -
- 35X12.50X15 BFG K02 A/T TIRES -
- NEW SOFTOP -

CLEAN CAREAV HISTORY

- CLEAN CARFAX HISTORY -

- TRADES INS WELCOME -

- WE SELL & SHIP WORLDWIDE -

**FOR FINANCING WE
RECOMMEND <http://LIGHTSTREAM.COM>**

- CALL NOLAN @ 904-382-7230 -

Lifted 2005 TJ Jeep Wrangler Rubicon.
Only 63,000 low miles, Flame red, slate gray interior, Factory DANA 44s, Factory 4:10 gears, Factory Locking Differentials, Factory 4 wheel disc brakes, expensive Full Traction 6" long arm suspension system with 3 link rear suspension, Rock rails, Mickey Thompson wheels with 35x12.50x15 BFG K02 A/T tires, steel front & rear bumpers, winch, KC Fog lights, new soft top, Cold A/C, 4.0L inline 6 cylinder, automatic transmission. The CarFax reports no accidents or issues. This Jeep Runs, drives, and looks great. It is very clean inside and out as well as underneath. Sale includes 2 keys, rubber mats, and owners manuals.

Call Nolan: 904-382-7230. ALL INVENTORY IS STORED INDOORS AND SHOWN BY APPOINTMENT. Trades accepted. Extended warranties available. All applicable sales tax, title, registration and a \$299 document fees apply.

Also check us out at:

http://www.instagram.com/nolan_premierautosource

<https://www.facebook.com/premierautosource/>

<http://youtube.com/premierautosource>

#PREMIERAUTOSOURCE

#PREMIERJEEPSOURCE

KEYWORD SEARCH: Lifted Toyota Lifted Lexus GX470 GX460 GX 470 GX 460 LX470 LX 470 LX570 LX 570 LX450 LX 450 FJ Cruiser Landcruiser Land Cruiser 4Runner 4 Runner Four Runner SR5 TRD 4WD 4x4 AWD Overland Overlanding Off Road Lift Jeep Wrangler Rubicon Sahara Sport X LJ TJ JK JL Hard Top Soft Top Bronco Blazer

Our Location :



2005 Jeep Wrangler Rubicon Lifted
Premier Automotive Source LLC - - View this car on our website at premierautomotivesource.com/6847921/ebrochure

Installed Options

Interior

- AM/FM stereo w/CD player-inc: changer control
- Cloth reclining high-back front bucket seats - (7) speakers w/subwoofer- Air conditioning
- Aux 12-volt pwr outlet- Black diamond plate sill guards- Cargo tie down loops
- Courtesy/underhood lamps- Easy access tip/slide driver seat- Fixed long mast antenna
- Folding rear seat- Front/rear seat/wheelhouse/cargo area carpeting
- Full length floor console- Glove box w/lock- Sport bar w/full padding- Tilt steering column
- Tip & slide passenger seat

Exterior

- Folding soft top- Variable intermittent windshield wipers- Deep tint sunscreen glass
- Fog lamps- Fold away exterior mirrors- Front door light tinted windows
- Premium fender flares

Safety

- AM/FM stereo w/CD player-inc: changer control
- Cloth reclining high-back front bucket seats - (7) speakers w/subwoofer- Air conditioning
- Aux 12-volt pwr outlet- Black diamond plate sill guards- Cargo tie down loops
- Courtesy/underhood lamps- Easy access tip/slide driver seat- Fixed long mast antenna
- Folding rear seat- Front/rear seat/wheelhouse/cargo area carpeting
- Full length floor console- Glove box w/lock- Sport bar w/full padding- Tilt steering column
- Tip & slide passenger seat

Mechanical

- Full size spare tire w/outside carrier- HD 6-speed manual transmission
- Matching spare wheel- (5) 16" x 8" "Moab" aluminum wheels - 117-amp alternator
- 19 gallon fuel tank- 4-wheel pwr disc brakes- 4.0L SMPI I6 "Power Tech" engine
- 4.11 axle ratio- 4600# GVWR- 4:1 Rocktrac HD part-time 4WD system
- 600-CCA maintenance free battery- Front/rear stabilizer bars
- HD Dana 44/226MM rear axle- HD Dana M44/216MM front axle
- High pressure gas-charged shock absorbers- LT245/75R16 on/off road BSW tires
- Next generation engine controller- Pwr steering- Skid plates-inc: transfer case, fuel tank
- Tethered gas cap- Tow hooks-inc: (2) front, (1) rear- Tru-lok front/rear differential

Option Packages

Factory Installed Packages

4.0L SMPI I6 "POWER TECH" ENGINE

4-SPEED AUTOMATIC TRANSMISSION

-inc: lock-up torque converter

\$825

Option Packages Total

\$825

DEALER POLICIES: Please review all photos carefully and ask questions prior to making an offer if there is anything you are not sure about. We welcome pre-sale inspections. Any descriptions we make of vehicles shall not be construed as any type of warranty. Our pictures are as thorough and precise as we can make them. Please be advised that this is not a brand new vehicle. It is a pre-owned vehicle and has previously been driven, so therefore with respect to the miles there will most likely be average wear and tear, such as minor scratches, minor dings, or small rock chips. We do our best to disclose any substantial blemishes in our photos and descriptions. If our vehicles include manuals, service records or extra sets of keys, it will be shown in the pictures and noted in the description. The advertised mileage is a round number and may vary slightly from the exact mileage due to demo and test drives. Once a vehicle leaves our premises, no refunds, credits, or adjustments, will be issued. All Vehicles are conveyed AS-IS. Dealer neither makes nor implies any warranty on this or any vehicle. Any dispute that may arise shall take place under the laws of the state of Florida, in the state of Florida and all sales are subject to binding Arbitration under the rules of the American Arbitration Association. All applicable sales tax, tag and title fees apply. When we receive a vehicle into our inventory, sometimes the title is being held by a bank or lender as collateral for the previous loan or payoff. Occasionally there is a delay in receiving the title from these lending institutions after payoff of the loan for up to two weeks. While we usually have the titles in our possession, there are instances where we may be waiting for the title to arrive. We guarantee clean titles on our vehicles unless otherwise noted. In some cases we may hold titles until cashiers checks or other funds are cleared or unless other arrangements were agreed upon. Titles will be sent via Fedex for proper tracking. Thank you for your patience and understanding.

Premier Automotive Source LLC

premierautomotivesource.com

3075 Leon Rd

Jacksonville , FL 32246

© 2024 AutoRevo - All rights reserved. - Powered by AutoRevo