

3075 Leon Rd
Jacksonville , FL 32246

2006 Jeep Wrangler Unlimited Rubitrux conversion

Nolan Hill

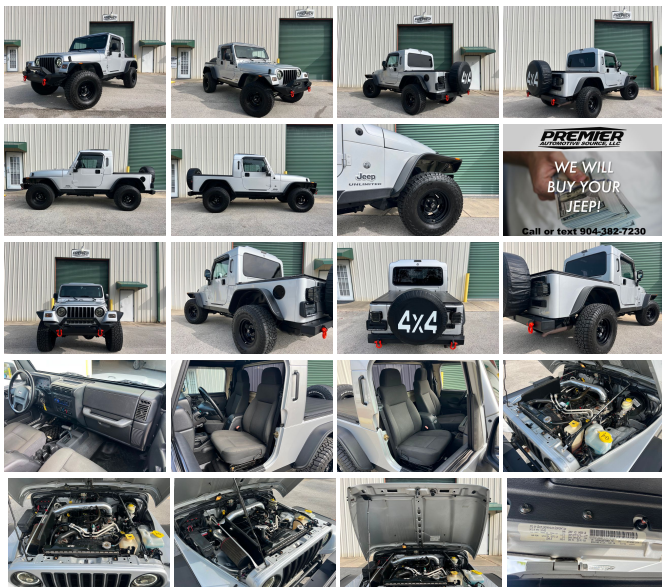
View this car on our website at premierautomotivesource.com/6847907/ebrochure



Our Price **\$0**

Specifications:

Year:	2006
VIN:	1J4FA44S36P732823
Make:	Jeep
Model/Trim:	Wrangler Unlimited Rubitrux conversion
Condition:	Pre-Owned
Body:	SUV
Exterior:	Bright Silver Metallic
Engine:	4.0L SMPI I6 "POWER TECH" ENGINE
Interior:	Dark Slate Gray Cloth
Transmission:	4-SPEED AUTOMATIC TRANSMISSION
Mileage:	81,120
Drivetrain:	4 Wheel Drive
Economy:	City 14 / Highway 18



2006 JEEP WRANGLER UNLIMITED LJ

- RUBITRUX TRUCK CONVERSION -

- LEGENDARY 4.0 INLINE 6 ENGINE -
- AUTOMATIC TRANSMISSION -
- FACTORY 3.73 GEARS -
- FACTORY DANA 44 REAR AXLE -
- FACTORY 4 WHEEL DISC BRAKES -
- BUSH WACKER FENDER FLARES -
- BLACK WHEELS -
- 32X11.50X15 FALKEN AT3 TIRES -
- STEEL FRONT & REAR BUMPERS -
- LED HEAD LIGHTS -

- LED LIGHT BAR -
- ALPINE RADIO WITH USB -
- COLD A/C -
- TRADE INS WELCOME -
- WE SELL & SHIP WORLD WIDE -
- CALL OR TEXT NOLAN @ 904-382-7230 -
- WALK AROUND VIDEO AVAILABLE -

2006 Jeep Wrangler Unlimited LJ, 4.0 inline 6cyl Engine, and Automatic Transmission. Bright Silver with Slate Gray cloth. RubitruX conversion pickup truck top, spray lined bed, black aluminum wheels with 32x11.50x15 Falken AT3 tires, Cold A/C, black steel bumpers, LED head lights, Alpine radio with USB. Factory Dana 44 rear axle with 3.73 gear and disc brakes. The legendary 4.0L inline 6cyl runs good, the trans shifts as it should, and the 4WD engages easily. This Wrangler is clean inside and out. It runs, drives, and looks great. Sold with 2 keys and All weather floor mats.

Call or text Nolan 904-382-7230. We can also set up a time to do a FaceTime/video call while we walk-around the vehicle and you can see the vehicle and ask questions. ALL INVENTORY IS STORED INDOORS AND SHOWN BY APPOINTMENT. Trades accepted. Extended warranties available. All applicable sales tax, title, registration and a \$299 document fees apply.

For financing we recommend LightStream, a division of Truist Bank. They offer low-interest financing to people with good credit. LightStream has an easy online application process, and provides a quick response during business hours. This is a confidential process between you and LightStream.

(Please note, we may receive a referral fee from LightStream through this link.)

For more information or to apply, use the link below.

2006 Jeep Wrangler Unlimited Rubitrux conversion

Premier Automotive Source LLC - - View this car on our website at premierautomotivesource.com/6847907/ebrochure

Our Location :



2006 Jeep Wrangler Unlimited Rubitrux conversion

Premier Automotive Source LLC - - View this car on our website at premierautomotivesource.com/6847907/ebrochure

Installed Options

Interior

- AM/FM stereo w/CD player-inc: changer control
- Cloth reclining high-back front bucket seats - Front floor mats- (4) speakers
- Air conditioning- Aux 12-volt pwr outlet- Cargo tie down loops
- Courtesy/underhood lamps- Easy access tip/slide driver seat
- Easy access tip/slide passenger seat- Fixed long mast antenna- Folding rear seat
- Front/rear seat, wheelhouse, cargo area carpeting- Full length floor console
- Glove box w/lock- Sport bar w/full padding- Tilt steering column

Exterior

- Easy folding soft top- Sunrider soft top- Variable intermittent windshield wipers
- Bumper extensions- Deep tint sunscreen glass- Fender flares- Fog lamps
- Fold away mirrors- Front door light tinted windows

Safety

- AM/FM stereo w/CD player-inc: changer control
- Cloth reclining high-back front bucket seats - Front floor mats- (4) speakers
- Air conditioning- Aux 12-volt pwr outlet- Cargo tie down loops
- Courtesy/underhood lamps- Easy access tip/slide driver seat
- Easy access tip/slide passenger seat- Fixed long mast antenna- Folding rear seat
- Front/rear seat, wheelhouse, cargo area carpeting- Full length floor console
- Glove box w/lock- Sport bar w/full padding- Tilt steering column

Mechanical

- 6-speed manual transmission- (2) front/(1) rear tow hooks
- (5) 15" x 8.0" "Ravine" aluminum wheels - 117-amp alternator- 19 gallon fuel tank
- 3.73 axle ratio- 30 x 9.5R15 all-terrain OWL "Wrangler" tires - 4-wheel pwr disc brakes
- 4.0L SMPI I6 "Power Tech" engine - 4600# GVWR- 600-CCA maintenance free battery
- Command-Trac part-time 4WD system- Dana 30/186MM front axle- Front stabilizer bar
- Full size spare tire w/outside carrier- HD Dana 44 rear axle
- High pressure gas-charged shock absorbers- Next generation engine controller
- Pwr recirculating ball steering- Skid plates-inc: transfer case, fuel tank
- Trac-Lok rear differential

Option Packages

Factory Installed Packages

4.0L SMPI I6 "POWER TECH" ENGINE

4-SPEED AUTOMATIC TRANSMISSION

-inc: lock-up torque converter

\$825

Option Packages Total

\$825

DEALER POLICIES: Please review all photos carefully and ask questions prior to making an offer if there is anything you are not sure about. We welcome pre-sale inspections. Any descriptions we make of vehicles shall not be construed as any type of warranty. Our pictures are as thorough and precise as we can make them. Please be advised that this is not a brand new vehicle. It is a pre-owned vehicle and has previously been driven, so therefore with respect to the miles there will most likely be average wear and tear, such as minor scratches, minor dings, or small rock chips. We do our best to disclose any substantial blemishes in our photos and descriptions. If our vehicles include manuals, service records or extra sets of keys, it will be shown in the pictures and noted in the description. The advertised mileage is a round number and may vary slightly from the exact mileage due to demo and test drives. Once a vehicle leaves our premises, no refunds, credits, or adjustments, will be issued. All Vehicles are conveyed AS-IS. Dealer neither makes nor implies any warranty on this or any vehicle. Any dispute that may arise shall take place under the laws of the state of Florida, in the state of Florida and all sales are subject to binding Arbitration under the rules of the American Arbitration Association. All applicable sales tax, tag and title fees apply. When we receive a vehicle into our inventory, sometimes the title is being held by a bank or lender as collateral for the previous loan or payoff. Occasionally there is a delay in receiving the title from these lending institutions after payoff of the loan for up to two weeks. While we usually have the titles in our possession, there are instances where we may be waiting for the title to arrive. We guarantee clean titles on our vehicles unless otherwise noted. In some cases we may hold titles until cashiers checks or other funds are cleared or unless other arrangements were agreed upon. Titles will be sent via Fedex for proper tracking. Thank you for your patience and understanding.

Premier Automotive Source LLC

premierautomotivesource.com

3075 Leon Rd

Jacksonville , FL 32246

© 2024 AutoRevo - All rights reserved. - Powered by AutoRevo