

# 2019 GMC Savana Cargo Van WT 155WB CARGO VAN

View this car on our website at [workvansandtrucks.com/6845475/ebrochure](http://workvansandtrucks.com/6845475/ebrochure)



Our Price **\$0**

## Specifications:

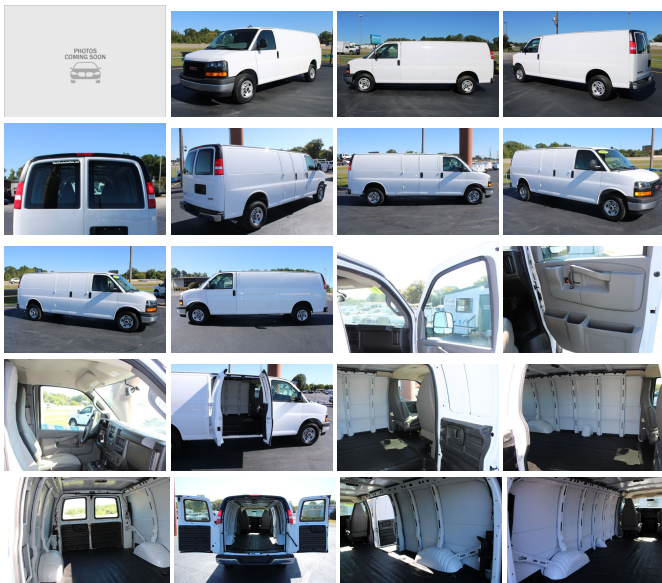
**Year:** 2019  
**VIN:** 1GTW7BFG9K1258679  
**Make:** GMC  
**Stock:** C2567  
**Model/Trim:** Savana Cargo Van WT 155WB CARGO VAN  
**Condition:** Pre-Owned  
**Body:** Minivan/Van  
**Exterior:** WHITE  
**Engine:** ENGINE, VORTEC 6.0L V8 SFI FLEXFUEL  
**Mileage:** 10,439  
**Drivetrain:** Rear Wheel Drive

2019 GMC 2500 SAVANA WT 155WB CARGO VAN 6.0 GAS ENGINE, AUTOMATIC TRANSMISSION.

This 3/4 Ton work van comes with Power Windows, Power Door Locks, Power Mirrors, Key- Fob, Tow Haul Mode, Manual Shift Mode, am/fm Radio, Traction Control, Charging Ports, On-Star for your Safety, Vinyl Floor, Cloth Seats, Barn Style Side and Rear Doors, Cargo Mat, Cargo tie Downs.

Open Cargo Area.

Current Oil and Filter Service.



**Vehicle History Report : as Of 04/19/2024**



**Snapshot**

**2019 GMC SAVANA 2500**



Accident reported: vehicle not damaged



**31** Service history records



**4** Previous owners



Corporate vehicle



Last owned in Kansas



**213,341** Last reported odometer reading



**FREE CARFAX Report**

See the full CARFAX Report for additional information

\*carfax Snapshot is a reflection of available information on the date the report was pulled. carfax is constantly being updated with new information and is subject to change at any time.

**Our Location :**



2019 GMC Savana Cargo Van WT 155WB CARGO VAN

T & B Auto Sales - 501-847-2727 - View this car on our website at [workvansandtrucks.com/6845475/ebrochure](http://workvansandtrucks.com/6845475/ebrochure)

**Installed Options**

**Interior**

- Seats, front bucket with vinyl trim and outboard head restraints, includes inboard armrests. (Requires (\*\*W) interior trim. Includes (DAA) driver and front passenger vinyl visors.)
- Seating arrangement, driver and front passenger high-back buckets with head restraints and vinyl or cloth trim (Not available with (AJ3) driver-side only frontal airbag.)
- Air conditioning, single-zone manual (Not available with (R6G) air conditioning delete.)
- Driver Information Center includes fuel range, average speed, oil life, tire pressure monitoring, fuel used, ice warning, engine hours, average fuel economy, tachometer, and maintenance reminders. Compass and outside temperature available if equipped.
- Door locks, power with lock-out protection (Included with (ZQ2) Power Convenience Package. NOTE: Does not include (ATG) Remote Keyless Entry. (ATG) Remote Keyless Entry must be ordered separately.)
- Windows, power (Included with (ZQ2) Convenience Package.)
- Power outlets, 2 auxiliary on engine console cover with covers, 12-volt
- Power outlet, 120-volt- Mirror, inside rearview includes Rear Vision Camera display
- Console, engine cover with open storage bin
- Floor covering, full-length Black rubberized-vinyl (Not available with (RFM) rear floor covering delete, (5BV) Upfitter electrical or (PCH) Hotel Shuttle Package.)
- Steering wheel, steel sleeve column with theft-deterrent locking feature, Black
- Instrumentation, analog with speedometer, odometer with trip odometer, fuel level, voltmeter, engine temperature and oil pressure

**Option Packages**

**Factory Installed Packages**

**ENGINE, VORTEC 6.0L V8 SFI FLEXFUEL**  
 (341 hp [254.3 kW] @ 5400 rpm, 373 lb-ft of torque [503.6 N-m] @ 4200 rpm) **\$995**

**Option Packages Total** **\$995**

- Oil life monitor- Warning tones, headlamp on and key-in-ignition
- Tow/haul mode selector, instrument panel-mounted
- Theft-deterrent system, vehicle, PASS-Key III - Defogger, side windows
- Cup holders, 3 on the engine console cover
- Trim panels, hinged rear side doors and hinged rear doors (Not available with (Y3H) Paratransit Package or (5BV) Upfitter electrical provisions.)
- Headliner, cloth, over driver and passenger
- Visors, driver and front passenger, cloth, padded
- Assist handles, driver and right-front passenger
- Lighting, interior with 4 dome lights 1 overhead and 3 LED's on cross members in cargo area, includes defeat switch and door handle-activated switches
- Cargo tie-downs 6 D-ring attachments on cargo area floor (Not available with (Y3H) Paratransit Package, (5BV) Upfitter electrical provisions or (ZP6) 5-passenger Savana Crew Van.)

---

## Exterior

- Wheels, 4 - 16" x 6.5" (40.6 cm x 16.5 cm) steel includes Gray center caps and steel spare
- Tire, spare LT245/75R16 all-season, blackwall located at rear underbody of vehicle
- Tires, front LT245/75R16E all-season, blackwall
- Tires, rear LT245/75R16E all-season, blackwall
- Door, swing-out passenger-side, 60/40 split
- Bumpers, front and rear painted Black with step-pad
- Headlamps, dual halogen composite- Mirrors, outside manual, Black
- Glass, Solar-Ray light-tinted, all windows
- Wipers, front intermittent wet-arm with pulse washers

---

## Safety

- Seats, front bucket with vinyl trim and outboard head restraints, includes inboard armrests. (Requires (\*\*W) interior trim. Includes (DAA) driver and front passenger vinyl visors.)
- Seating arrangement, driver and front passenger high-back buckets with head restraints and vinyl or cloth trim (Not available with (AJ3) driver-side only frontal airbag.)
- Air conditioning, single-zone manual (Not available with (R6G) air conditioning delete.)
- Driver Information Center includes fuel range, average speed, oil life, tire pressure monitoring, fuel used, ice warning, engine hours, average fuel economy, tachometer, and maintenance reminders. Compass and outside temperature available if equipped.
- Door locks, power with lock-out protection (Included with (ZQ2) Power Convenience Package. NOTE: Does not include (ATG) Remote Keyless Entry. (ATG) Remote Keyless Entry must be ordered separately.)
- Windows, power (Included with (ZQ2) Convenience Package.)
- Power outlets, 2 auxiliary on engine console cover with covers, 12-volt
- Power outlet, 120-volt- Mirror, inside rearview includes Rear Vision Camera display
- Console, engine cover with open storage bin
- Floor covering, full-length Black rubberized-vinyl (Not available with (RFM) rear floor covering delete, (5BV) Upfitter electrical or (PCH) Hotel Shuttle Package.)
- Steering wheel, steel sleeve column with theft-deterrent locking feature, Black
- Instrumentation, analog with speedometer, odometer with trip odometer, fuel level, voltmeter, engine temperature and oil pressure
- Oil life monitor- Warning tones, headlamp on and key-in-ignition
- Tow/haul mode selector, instrument panel-mounted
- Theft-deterrent system, vehicle, PASS-Key III - Defogger, side windows
- Cup holders, 3 on the engine console cover
- Trim panels, hinged rear side doors and hinged rear doors (Not available with (Y3H) Paratransit Package or (5BV) Upfitter electrical provisions.)
- Headliner, cloth, over driver and passenger
- Visors, driver and front passenger, cloth, padded
- Assist handles, driver and right-front passenger
- Lighting, interior with 4 dome lights 1 overhead and 3 LED's on cross members in cargo area, includes defeat switch and door handle-activated switches
- Cargo tie-downs 6 D-ring attachments on cargo area floor (Not available with (Y3H) Paratransit Package, (5BV) Upfitter electrical provisions or (ZP6) 5-passenger Savana Crew Van.)

---

## Mechanical

- Engine, 4.3L V6 with Direct Injection and Variable Valve Timing, includes aluminum block construction (276 hp [206 kW] @ 5200 rpm, 298 lb-ft of torque [404 Nm] @ 3900 rpm) (Reference the Engine/Axle page for availability.)
- Transmission, 8-speed automatic, electronically controlled with overdrive and tow/haul mode, includes Cruise Grade Braking and Powertrain Grade Braking (Requires (LV1) 4.3L V6 SIDI engine or (LWN) 2.8L Duramax Turbo-Diesel engine.)
- Rear axle, 3.42 ratio (Reference the Engine/Axle page for availability.) - Body, standard
- GVWR, 8600 lbs. (3901 kg) (Reference the Engine/Axle page for availability.)
- Transmission oil cooler, external (Deleted when (LWN) 2.8L Duramax Turbo-Diesel engine is ordered.)
- Rear wheel drive
- Cooling, external engine oil cooler (Not available with (LWN) 2.8L Duramax Turbo-Diesel

- Cooling, external engine oil cooler (not available with (LWN) 2.8L Duramax Turbo-Diesel engine.)
- Battery, 600 cold-cranking amps, maintenance-free with rundown protection and retained accessory power
- Alternator, 105 amps (Not available with (Y3H) Paratransit Package, (C69) rear air conditioning, (9L7) Wiring junction block equipment accessory, (5BV) Upfitter electrical provisions or (LWN) 2.8L Duramax Turbo-Diesel engine.)
- Frame, full-length box ladder-type
- Suspension, front independent with coil springs and stabilizer bar
- Suspension, rear hypoid drive axle with multi-leaf springs- Steering, power
- Brakes, 4-wheel antilock, 4-wheel disc
- Fuel tank capacity, mid-frame and approximately 31 gallons (117.3L)
- Exhaust, aluminized stainless-steel muffler and tailpipe



[workvansandtrucks.com](http://workvansandtrucks.com)

501-847-2727

25637 I-30

Bryant, AR 72022

© 2024 AutoRevo - All rights reserved. - Powered by AutoRevo