

2014 Porsche Cayman Base

View this car on our website at bulletautogroup.com/6844183/ebrochure



Our Price **\$37,725**

Specifications:

Year:	2014
VIN:	WP0AA2A8XEK174039
Make:	Porsche
Stock:	174039
Model/Trim:	Cayman Base
Condition:	Pre-Owned
Body:	Coupe
Exterior:	White
Engine:	Engine: 2.7L H-6 DOHC
Interior:	Amber Orange/Agate Gray Leather
Mileage:	20,500
Drivetrain:	Rear Wheel Drive
Economy:	City 20 / Highway 30

2014 Porsche Cayman RWD 2.7L H6 DOHC

Recent Arrival!
Super Clean Vehicle.....

Features Include:

BASE Cayman
250 Porsche Doppelkupplung (PDK)
406 19-inch Cayman S wheels
446 Wheel center caps with colored Porsche Crest
630 Light Design Package
658 Power Steering Plus
680 BOSE?? Surround Sound System
980 Leather Package
P9A Convenience Package
PX Leather package with partial leather seats in Agate Grey / Amber Orange
Y8 Mahogany Metallic

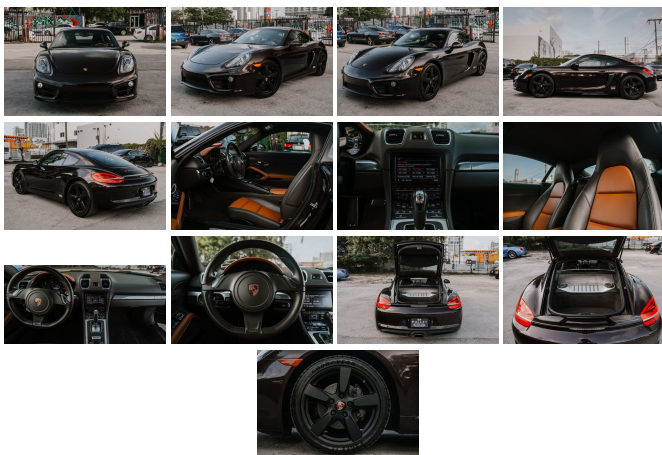
Please call the store for more details. 954-613-8799

Awards:

* 2014 KBB.com Brand Image Awards

Reviews:

* Contemporary mid-engine sports cars are an endangered species in today's marketplace, and most are unattainable for all but the well-to-do. If you are looking for the near-handling perfection and superior balance of a mid-engine coupe in an affordable package, the 2014 Porsche Cayman is the only game in town. Source: KBB.com
* Exceptional handling; slick-shifting transmissions; rewarding and



efficient engines; beautifully crafted interior; extensive personalization options. Source: Edmunds

* The new 2014 Porsche Cayman shows off a self-assured look with sloping headlights, edgy lines, and side scallops. Its new body structure is aluminum intensive making it 66-pounds lighter, and 40-percent stiffer than before. Plus, stability at high speeds has been improved due to a wider track and 2.4-inch longer wheelbase. One look and you know this car will have no difficulty slicing through the wind as it blasts you down the road with your adrenaline flowing and a smile on your face. It is a mid-engine coupe with superior balance, remarkable handling, and an affordable price that simply must be experienced. The interior of the Cayman is incredibly modern, with sleek lines and a very high-end feel. However, it exudes an attitude that never lets you forget that you are behind the wheel of a sports car first and foremost. It possesses generous headroom and legroom so you don't feel confined. The seats are incredibly comfortable, and the controls on the center console are easy to reach and use. For your things, you will find storage in the front under the hood, and in the rear hatch that give you 15 cubic feet of cargo space. It is sold in two models: the base Cayman and top-level the Cayman S. The Cayman comes with a 2.7-Liter, 6-Cylinder engine that has 275 horsepower and can be bought as a 6-speed manual or automatic. The Cayman S comes with a 3.4-Liter, 6-Cylinder engine than has 325 Horsepower and can also be bought as a manual or automatic. Both models are rear-wheel drive. Porsche has given the base Cayman a generous array of standard features including such items as a sound system with 4-speakers and a 7-inch touch screen, water-repellant front windows with rain sensing wipers, Bluetooth wireless connectivity, a leather-wrapped steering wheel and 18-inch wheels. In terms of safety, both Cayman models have 8 airbags, anti-lock brakes and brake assist, plus roadside assistance that is complimentary for the duration of the limited warranty. Source: The Manufacturer Summary

2014 Porsche Cayman Base

Bullet Automotive Group - (954) 613-8799 - View this car on our website at bulletautogroup.com/6844183/ebrochure

Vehicle History Report : as Of 09/21/2020



Snapshot

2014 PORSCHE CAYMAN

	Accident reported
	2 Previous owners
	5 Service history records
	Personal vehicle
	Last owned in New York
	25,500 Last reported odometer reading



FREE CARFAX Report

See the full CARFAX Report for additional information

*carfax Snapshot is a reflection of available information on the date the report was pulled. carfax is constantly being updated with new information and is subject to change at any time.

Our Location :



Installed Options

Interior

- Sport Seats -inc: electric backrest adjustment, manual fore/aft and height adjustment
- Driver Seat- Passenger Seat- Manual Tilt/Telescoping Steering Column
- Gauges -inc: Speedometer, Odometer, Oil Pressure, Engine Coolant Temp, Tachometer, Oil Level, Oil Temperature, Trip Odometer and Trip Computer
- Fixed Rear Windows- Leather Steering Wheel- Front Cupholder- Front Cigar Lighter(s)
- Ashtray- Valet Function- Power Fuel Flap Locking Type
- Remote Keyless Entry w/Integrated Key Transmitter, 2 Door Curb/Courtesy and Illuminated Entry
- Remote Releases -Inc: Power Cargo Access- HomeLink Garage Door Transmitter
- Cruise Control- Manual Air Conditioning- Illuminated Locking Glove Box
- Driver Foot Rest
- Interior Trim -inc: Metal-Look Instrument Panel Insert, Metal-Look Console Insert, Metal-Look Interior Accents and Leather Upholstered Dashboard
- Full Cloth Headliner- Leather Door Trim Insert- Leather Gear Shifter Material
- Partial Leather Seat Trim- Day-Night Rearview Mirror
- Driver And Passenger Visor Vanity Mirrors w/Driver And Passenger Illumination
- Full Floor Console w/Locking Storage and 3 12V DC Power Outlets - Front Map Lights
- Fade-To-Off Interior Lighting- Full Carpet Floor Covering -inc: Carpet Front Floor Mats
- Carpet Floor Trim- Cargo Net- Rigid Cargo Cover
- Cargo Features -inc: Spare Tire Mobility Kit- Cargo Space Lights
- FOB Controls -inc: Cargo Access
- Instrument Panel Bin, Interior Concealed Storage, Driver And Passenger Door Bins
- Power 1st Row Windows w/Driver And Passenger 1-Touch Up/Down - Power Door Locks
- Systems Monitor- Redundant Digital Speedometer- Trip Computer
- Outside Temp Gauge- Analog Display- Seats w/Leatherette Back Material
- Fixed Front Head Restraints- Front Center Armrest- Perimeter Alarm
- Engine Immobilizer- 3 12V DC Power Outlets- Air Filtration

Exterior

- Wheels: 8J x 18" Fr & 9J x 18" Rr Cayman Alloy
- Tires: P235/45ZR18 Fr & P265/45ZR18 Rr- Wheels w/Silver Accents w/Locks
- Spare Tire Mobility Kit- Clearcoat Paint
- Body-Colored Front Bumper w/Black Rub Strip/Fascia Accent
- Body-Colored Rear Bumper w/Black Rub Strip/Fascia Accent
- Black Side Windows Trim and Black Front Windshield Trim - Body-Colored Door Handles
- Body-Colored Power Heated Side Mirrors w/Manual Folding
- Fixed Rear Window w/Defroster- Light Tinted Glass
- Rain Detecting Variable Intermittent Wipers w/Heated Jets
- Front Windshield -inc: Sun Visor Strip- Galvanized Steel/Aluminum Panels
- Power Spoiler- Liftgate Rear Cargo Access- Projector Beam Halogen Headlamps
- Front And Rear Fog Lamps- Perimeter/Approach Lights- LED Brakelights

Safety

- Sport Seats -inc: electric backrest adjustment, manual fore/aft and height adjustment
- Driver Seat- Passenger Seat- Manual Tilt/Telescoping Steering Column
- Gauges -inc: Speedometer, Odometer, Oil Pressure, Engine Coolant Temp, Tachometer, Oil Level, Oil Temperature, Trip Odometer and Trip Computer
- Fixed Rear Windows- Leather Steering Wheel- Front Cupholder- Front Cigar Lighter(s)
- Ashtray- Valet Function- Power Fuel Flap Locking Type
- Remote Keyless Entry w/Integrated Key Transmitter, 2 Door Curb/Courtesy and Illuminated Entry
- Remote Releases -Inc: Power Cargo Access- HomeLink Garage Door Transmitter
- Cruise Control- Manual Air Conditioning- Illuminated Locking Glove Box
- Driver Foot Rest
- Interior Trim -inc: Metal-Look Instrument Panel Insert, Metal-Look Console Insert, Metal-Look Interior Accents and Leather Upholstered Dashboard
- Full Cloth Headliner- Leather Door Trim Insert- Leather Gear Shifter Material
- Partial Leather Seat Trim- Day-Night Rearview Mirror
- Driver And Passenger Visor Vanity Mirrors w/Driver And Passenger Illumination
- Full Floor Console w/Locking Storage and 3 12V DC Power Outlets - Front Map Lights
- Fade-To-Off Interior Lighting- Full Carpet Floor Covering -inc: Carpet Front Floor Mats
- Carpet Floor Trim- Cargo Net- Rigid Cargo Cover

- Cargo Features -inc: Spare Tire Mobility Kit- Cargo Space Lights
- FOB Controls -inc: Cargo Access
- Instrument Panel Bin, Interior Concealed Storage, Driver And Passenger Door Bins
- Power 1st Row Windows w/Driver And Passenger 1-Touch Up/Down - Power Door Locks
- Systems Monitor- Redundant Digital Speedometer- Trip Computer
- Outside Temp Gauge- Analog Display- Seats w/Leatherette Back Material
- Fixed Front Head Restraints- Front Center Armrest- Perimeter Alarm
- Engine Immobilizer- 3 12V DC Power Outlets- Air Filtration

Mechanical

- Engine: 2.7L H-6 DOHC- Transmission: 6-Speed Manual -inc: dual-mass flywheel
- Engine Auto Stop-Start Feature- Transmission w/Oil Cooler- Rear-Wheel Drive
- 3.89 Axle Ratio- Engine Oil Cooler- 70-Amp/Hr 340CCA Maintenance-Free Battery
- 120 Amp Alternator- Gas-Pressurized Shock Absorbers- Front And Rear Anti-Roll Bars
- Sport Tuned Suspension- Electric Power-Assist Steering- 16.9 Gal. Fuel Tank
- Dual Stainless Steel Exhaust- Strut Front Suspension w/Coil Springs
- Strut Rear Suspension w/Coil Springs
- 4-Wheel Disc Brakes w/4-Wheel ABS, Front And Rear Vented Discs, Brake Assist, Hill Hold Control and Electric Parking Brake

Bullet Automotive Group

bulletautogroup.com

(954) 613-8799

2500 N Miami Ave

Miami, FL 33127

© 2020 AutoRevo - All rights reserved. - Powered by AutoRevo