

2018 Ram 3500 Chassis Cab Tradesman

View this car on our website at workvansandtrucks.com/6843801/ebrochure



Our Price **\$0**

Retail Value **\$42,995**

Specifications:

Year:	2018
VIN:	3C7WRSBJ8JG114264
Make:	Ram
Stock:	F2571
Model/Trim:	3500 Chassis Cab Tradesman
Condition:	Pre-Owned
Body:	Pickup Truck
Exterior:	WHITE
Engine:	ENGINE: 6.4L V8 HEAVY DUTY HEMI
Mileage:	2,453
Drivetrain:	Rear Wheel Drive

2018 RAM 3500 RAM HD TRADESMAN REG CAB 4X2 FLATBED 6.4 GAS ENGINE, AUTOMATIC TRANSMISSION.

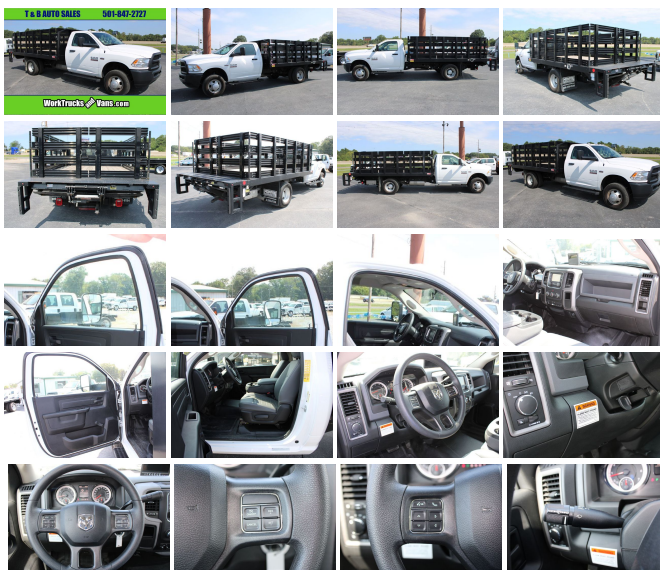
This 1 Ton work truck comes with Manual Windows, Manual Door Locks, Tilt Steering Wheel, Cruise Control, Blue Tooth Phone Controls, Backup Alarm Sound inside and outside the truck, Manual Shift Mode, am/fm/xm/ touch screen radio, Backup Camera, Trailer Brake Controller, Traction Control, Tow Haul, Lift Gate Power Switch,

12 Foot Flat Bed with a Wood Floor Removable Side Panels, Barn Style Rear Gate, Tuck Under Anthony Lift Gate, Saftey Gate.

Black Running Boards

Gate size is 78" inches wide and 44 inches long.

Current oil and Filter Service.



Vehicle History Report : as Of 04/27/2024



Snapshot

2018 RAM CHASSIS 3500



No accidents or damage reported to CARFAX



13 Service history records



At least 1 open recall



3 Previous owners



Personal vehicle



11,100 Last reported odometer reading



FREE CARFAX Report

See the full CARFAX Report for additional information

*carfax Snapshot is a reflection of available information on the date the report was pulled. carfax is constantly being updated with new information and is subject to change at any time.

Our Location :



2018 Ram 3500 Chassis Cab Tradesman

T & B Auto Sales - 501-847-2727 - View this car on our website at workvansandtrucks.com/6843801/ebrochure

Installed Options

Interior

- HD Vinyl 40/20/40 Split Bench Seat - Charge Only Remote USB Port
- 40/20/40 Split Bench Seat - Driver Seat
- 4-Way Passenger Seat -inc: Manual Recline and Fore/Aft Movement
- Manual Tilt Steering Column
- Gauges -inc: Speedometer, Odometer, Voltmeter, Oil Pressure, Engine Coolant Temp, Tachometer, Oil Temperature, Engine Hour Meter and Trip Odometer
- Cruise Control w/Steering Wheel Controls- Manual Air Conditioning
- HVAC -inc: Underseat Ducts- Glove Box- Interior Trim -inc: Deluxe Sound Insulation
- Full Cloth Headliner- Urethane Gear Shifter Material- Base Door Trim Panel
- Day-Night Rearview Mirror- Passenger Visor Vanity Mirror- 2 12V DC Power Outlets
- Fade-To-Off Interior Lighting- Full Vinyl/Rubber Floor Covering
- Instrument Panel Bin, Dashboard Storage, Driver And Passenger Door Bins
- Manual 1st Row Windows- Delayed Accessory Power- Systems Monitor
- Redundant Digital Speedometer- Analog Display- Seats w/Vinyl Back Material
- Manual Adjustable Front Head Restraints- Armrests w/Storage- Manual Adjust Seats
- Sentry Key Engine Immobilizer

Exterior

- Wheels: 17" x 6" Argent Steel- Tires: LT235/80R17E BSW All-Season- Center Hub
- Black Front Bumper- Black Side Windows Trim and Black Front Windshield Trim
- Black Door Handles- Black Manual Side Mirrors w/Convex Spotter and Manual Folding
- Manual Extendable Trailer Style Mirrors- Fixed Rear Window- Light Tinted Glass
- Variable Intermittent Wipers- Fully Galvanized Steel Panels- Black Grille
- Front License Plate Bracket
- Fully Automatic Aero-Composite Halogen Headlamps w/Delay-Off- Cab Clearance Lights
- Electronically Controlled Throttle- Tip Start

Safety

- HD Vinyl 40/20/40 Split Bench Seat - Charge Only Remote USB Port
- 40/20/40 Split Bench Seat - Driver Seat
- 4-Way Passenger Seat -inc: Manual Recline and Fore/Aft Movement
- Manual Tilt Steering Column
- Gauges -inc: Speedometer, Odometer, Voltmeter, Oil Pressure, Engine Coolant Temp, Tachometer, Oil Temperature, Engine Hour Meter and Trip Odometer
- Cruise Control w/Steering Wheel Controls- Manual Air Conditioning
- HVAC -inc: Underseat Ducts- Glove Box- Interior Trim -inc: Deluxe Sound Insulation
- Full Cloth Headliner- Urethane Gear Shifter Material- Base Door Trim Panel
- Day-Night Rearview Mirror- Passenger Visor Vanity Mirror- 2 12V DC Power Outlets
- Fade-To-Off Interior Lighting- Full Vinyl/Rubber Floor Covering
- Instrument Panel Bin, Dashboard Storage, Driver And Passenger Door Bins
- Manual 1st Row Windows- Delayed Accessory Power- Systems Monitor
- Redundant Digital Speedometer- Analog Display- Seats w/Vinyl Back Material
- Manual Adjustable Front Head Restraints- Armrests w/Storage- Manual Adjust Seats
- Sentry Key Engine Immobilizer

Mechanical

- Transmission: 6-Speed Automatic 66RFE
- Transmission w/Driver Selectable Mode, Sequential Shift Control and Oil Cooler
- Engine: 6.4L V8 Heavy Duty HEMI- 4.10 Axle Ratio- GVWR: 13,500 lbs
- 50 State Emissions- Rear-Wheel Drive
- 730CCA Maintenance-Free Battery w/Run Down Protection- 180 Amp Alternator
- 102 mph Maximum Speed- Towing Equipment -inc: Trailer Sway Control
- Trailer Wiring Harness- 7270# Maximum Payload- HD Shock Absorbers
- Front Anti-Roll Bar and Rear HD Anti-Roll Bar- Hydraulic Power-Assist Steering
- 52 Gal. Fuel Tank- Single Stainless Steel Exhaust
- Multi-Link Front Suspension w/Coil Springs- Leaf Rear Suspension w/Leaf Springs
- 4-Wheel Disc Brakes w/4-Wheel ABS, Front And Rear Vented Discs - Upfitter Switches
- Mechanical Limited Slip Differential

Option Packages

Factory Installed Packages

ENGINE: 6.4L V8 HEAVY DUTY HEMI



workvansandtrucks.com

501-847-2727

25637 I-30

Bryant, AR 72022

© 2024 AutoRevo - All rights reserved. - Powered by AutoRevo