



2017 Chevrolet Camaro ZL1

Our Price \$59,299

View this vehicle on our website at e887c6d5-f5ca-4ff2-ae31-4bf78bc3ddc2.autorevo-websites.com



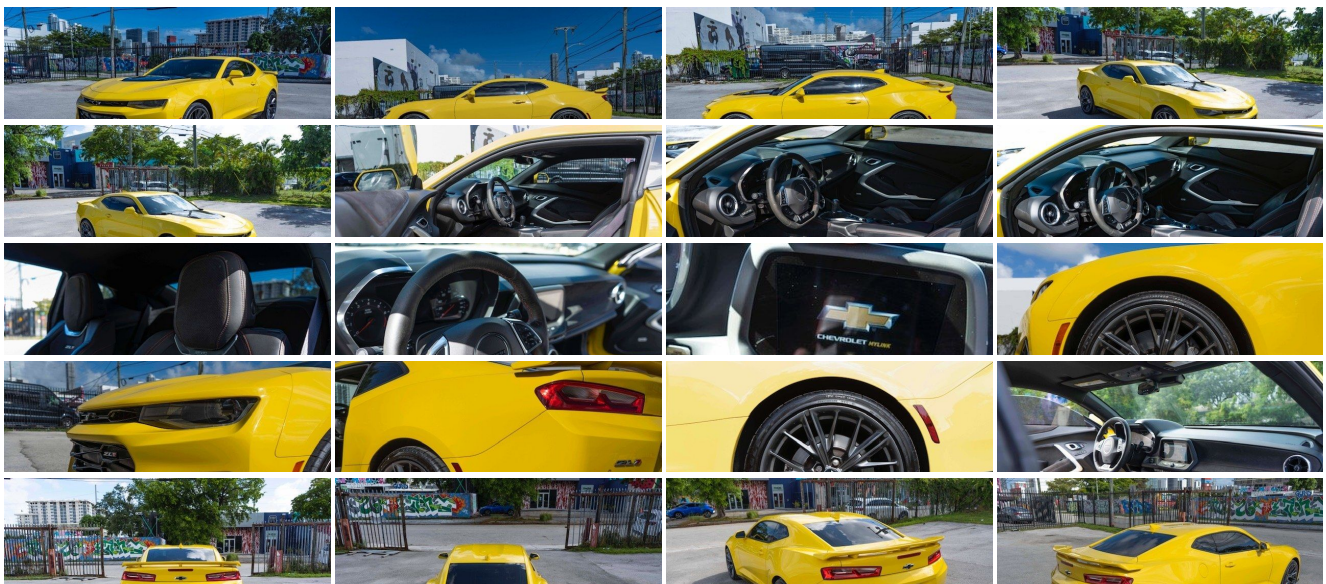
[\(954\) 613-8799](tel:9546138799)

2500 N Miami Ave , Miami, FL 33127

[Photos](#)

[Details](#)

[Contact](#)



Specifications:

| | |
|-------------|------------------------------|
| Year: | 2017 |
| VIN: | 1G1FJ1R69H0184329 |
| Make: | Chevrolet |
| Stock: | 184329 |
| Model/Trim: | Camaro ZL1 |
| Condition: | Pre-Owned |
| Body: | Coupe |
| Exterior: | Bright Yellow |
| Engine: | ENGINE, 6.2L SUPERCHARGED V8 |
| Interior: | Jet Black Leather |
| Mileage: | 33,896 |
| Drivetrain: | Rear Wheel Drive |
| Economy: | City 12 / Highway 20 |

Vehicle Description

Bright Yellow 2017 Chevrolet Camaro ZL1 RWD 6-Speed Manual 6.2L V8 Supercharged

Recent Arrival!

Please call the store for details 954-613-8799

Awards:

* Car and Driver 10 Best Cars * 2017 KBB.com 10 Coolest Cars Under \$25,000 * 2017 KBB.com 10 Most Awarded Brands Car and Driver, January 2017.

Reviews:

* Surprisingly sharp and nimble handling around turns, with lots of grip; appealing lineup of engines, including a strong V6 and a powerful V8, that provide class-leading acceleration; smooth ride quality on the highway and in town; good value, with lots of standard equipment. Source: Edmunds

| Installed Options | Option Packages |
|---|--|
| <div>Interior</div> <ul style="list-style-type: none">- Seats, Leather-trimmed with sueded inserts front bucket, RECARO performance- Seat adjuster, driver, 8-way power- Seats, heated driver and front passenger- Seats, ventilated driver and front passenger- Floor mats, carpeted front- Door locks, power programmable with lockout protection- Keyless Open and Start includes 2 remote transmitters that enable automatic door unlock and open by touching door switch- Seat adjuster, front passenger, 6-way power- Seat, rear, folding- Pedals, sporty alloy- Dead pedal, driver- Sill plates, illuminated- Steering wheel, heated- Steering wheel, sueded-wrapped, flat-bottom- Steering column, manual rake and telescopic- Head-Up Display with color digital readouts for vehicle speed, selected gear, G-Force, audio system information, high-beam indicator, compass, outside air temperature, turn signals, tachometer, vehicle messages, Turn-by-Turn information and phone information- Speedometer, miles/kilometers- Driver Information Center, enhanced, 8" diagonal multi-color re-configurable display- Compass display- Air conditioning, dual-zone automatic climate control with individual climate settings for driver and dedicated passenger controls and outside temperature display- Power outlet, 1 located on center console- Wireless Charging for devices- Windows, power with driver and passenger Express-Down/Up- Cruise control, electronic with set and resume speed, steering wheel mounted- Universal Home Remote includes garage door opener, 3-channel programmable- Mirror, inside rearview auto-dimming, frameless- Visors, driver and front passenger vanity mirrors, covered, illuminated- Trunk release, power- Defogger, rear-window, electric- Glovebox, lockable- Cup holders, 2 front- Lighting, front reading lamps- Lighting, interior spectrum 24 different color selections | <div>Factory Installed Packages</div> <div>ENGINE, 6.2L SUPERCHARGED V8 (650 hp [485 kW] @ 6400 rpm, 650 lb-ft torque [881N-m] @ 3600 rpm)</div> |

- Shift knob, sueded microfiber-wrapped
- Interior trim, aluminum accents on door trim and shifter cap

Exterior

- Wheels, 20" x 10" (50.8 cm x 25.4 cm) front and 20" x 11" (50.8 cm x 27.9 cm) rear Dark Graphite premium paint , forged aluminum
- Tires, 285/30R20 front and 305/30R20 rear, blackwall, summer-only (Do not use summer only tires in winter conditions, as it would adversely affect vehicle safety, performance and durability. Use only GM-approved tire and wheel combinations. Unapproved combinations may change the vehicle's performance characteristics. For important tire and wheel information, see your dealer for a copy of the vehicle's owner's manual.)
- Tire inflation kit- Spoiler, rear, sport
- Headlamps, high intensity discharge with automatic exterior lamp control
- Mirrors, outside heated power-adjustable and driver-side auto-dimming, body-color
- Wipers, front variable-speed, intermittent with washers

Safety

- Seats, Leather-trimmed with sueded inserts front bucket, RECARO performance
- Seat adjuster, driver, 8-way power- Seats, heated driver and front passenger
- Seats, ventilated driver and front passenger- Floor mats, carpeted front
- Door locks, power programmable with lockout protection
- Keyless Open and Start includes 2 remote transmitters that enable automatic door unlock and open by touching door switch
- Seat adjuster, front passenger, 6-way power- Seat, rear, folding- Pedals, sporty alloy
- Dead pedal, driver- Sill plates, illuminated- Steering wheel, heated
- Steering wheel, sueded-wrapped, flat-bottom
- Steering column, manual rake and telescopic
- Head-Up Display with color digital readouts for vehicle speed, selected gear, G-Force, audio system information, high-beam indicator, compass, outside air temperature, turn signals, tachometer, vehicle messages, Turn-by-Turn information and phone information
- Speedometer, miles/kilometers
- Driver Information Center, enhanced, 8" diagonal multi-color re-configurable display
- Compass display
- Air conditioning, dual-zone automatic climate control with individual climate settings for driver and dedicated passenger controls and outside temperature display
- Power outlet, 1 located on center console- Wireless Charging for devices
- Windows, power with driver and passenger Express-Down/Up
- Cruise control, electronic with set and resume speed, steering wheel mounted
- Universal Home Remote includes garage door opener, 3-channel programmable
- Mirror, inside rearview auto-dimming, frameless
- Visors, driver and front passenger vanity mirrors, covered, illuminated
- Trunk release, power- Defogger, rear-window, electric- Glovebox, lockable
- Cup holders, 2 front- Lighting, front reading lamps
- Lighting, interior spectrum 24 different color selections
- Shift knob, sueded microfiber-wrapped
- Interior trim, aluminum accents on door trim and shifter cap

Mechanical

- Transmission, 6-speed manual (Includes Active Rev Matching.)
- Engine, 6.2L supercharged V8 (650 hp [485 kW] @ 6400 rpm, 650 lb-ft torque [881N-m] @ 3600 rpm)
- Rear axle, 3.73 ratio (Included with (MN6) 6-speed manual transmission.)
- Cooling, external engine oil cooler- Cooler, engine coolant, auxiliary
- Cooling system, extra capacity
- Driver Selector Mode up to 4 modes available for various driving conditions - Snow/Ice, Tour, Sport and Track (SS and ZL1 models only)
- Launch control, custom- Differential, electronic limited slip (eLSD)
- Cooler, rear differential- Cooler, transmission oil- Battery rundown protection
- Rear wheel drive- Suspension, Performance- Magnetic ride control
- Steering, power, variable ratio, electric
- Brakes, Brembo 6-piston front and 4-piston rear, performance, 4-wheel antilock, 4-wheel disc
- Fueling system, capless- Exhaust, dual-mode, performance

Bullet Automotive Group

Bullet Automotive Group

View this car on our website at e887c6d5-f5ca-4ff2-ae31-4bf78bc3ddc2.autorevo-websites.com/6843633

Website: e887c6d5-f5ca-4ff2-ae31-4bf78bc3ddc2.autorevo-websites.com

Phone: [\(954\) 613-8799](tel:(954)613-8799)

Map: [2500 N Miami Ave, Miami, FL 33127](#)

