

# 2019 Chevrolet Silverado 2500HD Work Truck

View this car on our website at [workvansandtrucks.com/6842232/ebrochure](http://workvansandtrucks.com/6842232/ebrochure)



Our Price **\$0**

Retail Value **\$47,850**

## Specifications:

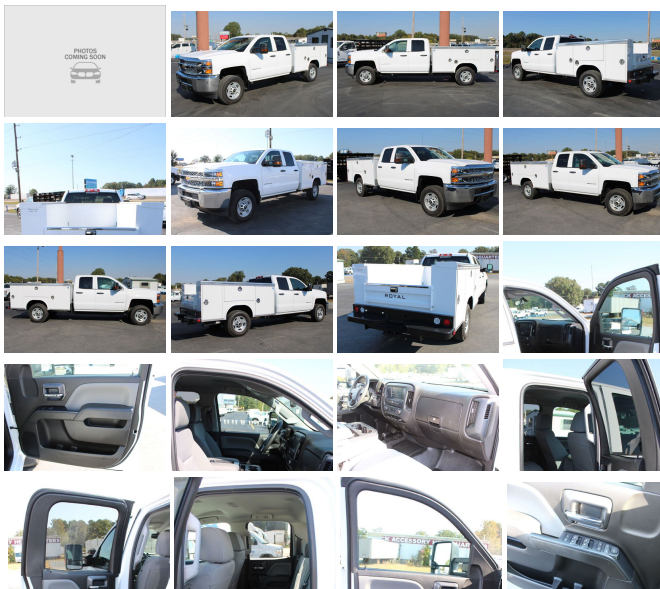
**Year:** 2019  
**VIN:** 2GC2KREG7K1204993  
**Make:** Chevrolet  
**Stock:** U2568  
**Model/Trim:** Silverado 2500HD Work Truck  
**Condition:** Pre-Owned  
**Body:** Pickup Truck  
**Exterior:** WHITE  
**Engine:** ENGINE, VORTEC 6.0L VARIABLE VALVE TIMING V8 SFI, E85-COMPATIBLE, FLEXFUEL  
**Mileage:** 14,690  
**Drivetrain:** 4 Wheel Drive

2019 CHEVROLET 2500 SILVERADO WT EXT CAB 4X4 PICKUP 6.0 GAS ENGINE, AUTOMATIC TRANSMISSION.

This 3/4 Ton service truck comes with Power Windows, Power Door Locks, Power Mirrors, Tow Mirrors, Heated Mirrors, Trailer Brake Controller, Tilt Steering Wheel, Cruise Control, am/fm/xm/Radio, Back-up Camera, Traction Control, Manual Shift 4X4 Lever.

Royal Flip top service Bed comes with 8 locking Tool Bins, Part Trays, Led Taillights, Locking Tail Gate, Rear Mounted Tow Hitch, Wide Rear Step.

Current Oil and Filter Service.



## Our Location :



2019 Chevrolet Silverado 2500HD Work Truck

T & B Auto Sales - 501-847-2727 - View this car on our website at [workvansandtrucks.com/6842232/ebrochure](http://workvansandtrucks.com/6842232/ebrochure)

## Installed Options

### Interior

- Seats, front 40/20/40 split-bench, 3-passenger, driver and front passenger recline with outboard head restraints and center fold-down armrest with storage. Vinyl has fixed lumbar and cloth has manually adjustable driver lumbar. (Upgradeable to (AZ3) front 40/20/40 split-bench seat.)
- Seat trim, Vinyl
- Seat, rear full-width folding bench, 3-passenger (includes child seat top tether anchor) (Requires Double Cab models.)
- Floor covering, Graphite-colored rubberized-vinyl- Steering column, manual Tilt-Wheel
- Steering wheel
- Instrumentation, 6-gauge cluster featuring speedometer, fuel level, engine temperature, tachometer, voltage and oil pressure
- Driver Information Center, 3.5-inch diagonal monochromatic display provides warning messages and basic vehicle information
- Windows, power with driver express up and down and express down on all other windows (Standard on Crew Cab and Double Cab models. On Regular Cab, included and only available with (PCM) WT Convenience Package.) (Standard on Crew Cab and Double Cab models. On Regular Cab model, included and only available with (PCM) WT Fleet Convenience Package (Double Cab and Regular Cab.)
- Door locks, power- Cruise control, steering wheel-mounted- Air conditioning, single-zone
- Assist handle, front passenger and driver on A-pillars

### Exterior

- Tire carrier lock keyed cylinder lock that utilizes same key as ignition and door (Not included when (ZW9) pickup box delete or (9J4) rear bumper delete is ordered.)
- Bumper, front chrome- CornerStep, rear bumper (Requires (E63) pickup box.)
- Bumper, rear chrome with bumper CornerSteps (Requires (E63) pickup box.)
- Grille, chrome with chrome mesh inserts- Grille surround, chrome
- Headlamps, halogen projector-beam
- Lamps, cargo area, cab mounted with switch on center switch bank
- Tires, LT245/75R17E all-season, blackwall
- Wheels, 17" (40.0 cm) steel includes 17" x 7.5" (40.0 cm x 19.1 cm) steel wheel

- wheels, 17" (43.2 cm) steel includes 17" x 7.5" (43.2 cm x 19.1 cm) steel spare wheel. Spare not included with (ZW9) pickup box delete unless a spare tire is ordered
- Mirrors, outside high-visibility vertical trailing, Black with manual folding and extension and lower convex spotter glass (Standard on Double Cab or Regular Cab models. Included on Crew Cab models with (ANQ) Alaskan Snow Plow Special Edition. Not available with (PCM) WT Convenience Package.) (Standard on Double Cab or Regular Cab models. Included on Crew Cab models with (ANQ) Alaskan Snow Plow Special Edition. Not available with (PCM) WT Fleet Convenience Package (Double Cab and Regular Cab).)
- Glass, solar absorbing, tinted- Door handles, Black
- Tailgate and bed rail protection caps, top
- Tailgate, locking, utilizes same key as ignition and door (Not available with (AQQ) Remote Keyless Entry.)
- Tailgate, EZ-Lift and Lower (Standard and only available on Double Cab models. Deleted when (ZW9) pickup box delete is ordered.)

## Safety

- Seats, front 40/20/40 split-bench, 3-passenger, driver and front passenger recline with outboard head restraints and center fold-down armrest with storage. Vinyl has fixed lumbar and cloth has manually adjustable driver lumbar. (Upgradeable to (AZ3) front 40/20/40 split-bench seat.)
- Seat trim, Vinyl
- Seat, rear full-width folding bench, 3-passenger (includes child seat top tether anchor) (Requires Double Cab models.)
- Floor covering, Graphite-colored rubberized-vinyl- Steering column, manual Tilt-Wheel
- Steering wheel
- Instrumentation, 6-gauge cluster featuring speedometer, fuel level, engine temperature, tachometer, voltage and oil pressure
- Driver Information Center, 3.5-inch diagonal monochromatic display provides warning messages and basic vehicle information
- Windows, power with driver express up and down and express down on all other windows (Standard on Crew Cab and Double Cab models. On Regular Cab, included and only available with (PCM) WT Convenience Package.) (Standard on Crew Cab and Double Cab models. On Regular Cab model, included and only available with (PCM) WT Fleet Convenience Package (Double Cab and Regular Cab).)
- Door locks, power- Cruise control, steering wheel-mounted- Air conditioning, single-zone
- Assist handle, front passenger and driver on A-pillars

## Mechanical

- Exhaust, aluminized stainless-steel muffler and tailpipe
- Capless Fuel Fill (Gas engine only. Not available with (ZW9) pickup box delete.)
- Brakes, 4-wheel antilock, 4-wheel disc with DuraLife brake rotors
- Steering, Recirculating Ball with smart flow power steering system
- Suspension Package, Standard includes 51mm twin tube shock absorbers and 33mm front stabilizer bar
- Trailing equipment Trailing hitch platform 2.5" with a 2.0" insert for HD, 7-wire harness with independent fused trailing circuits mated to a 7-way sealed connector to hook up parking lamps, backup lamps, right and left turn signals, an electric brake lead, battery and a ground. The trailer connector also includes the 4-way for use on trailers without brakes - park, brake/turn lamps (Standard on Double Cab or Regular Cab models with a pickup box and includes (JL1) integrated trailer brake controller. Included with (PCN) Silverado HD Custom on Crew Cab models. Not available with (ZW9) pickup box delete or (9J4) rear bumper delete.)
- Recovery hooks, front, frame-mounted, black
- Frame, fully-boxed, hydroformed front section- Trailer brake controller, integrated
- Alternator, 150 amps
- Battery, heavy-duty 720 cold-cranking amps/80 Amp-hr, maintenance-free with rundown protection and retained accessory power
- Cooling, auxiliary external transmission oil cooler- Cooling, external engine oil cooler
- Four wheel drive- Differential, heavy-duty locking rear
- Transfer case, with floor-mounted shifter (Included with 4WD models only.)
- Air cleaner, high-capacity
- GVWR, 9500 lbs. (4309 kg) (Requires CK25903 model, (L96) Vortec 6.0L V8 SFI engine or (LC8) 6.0L V8 SFI Gaseous CNG/LPG capable engine. Not available with CK25943.)
- Pickup box
- Rear axle, 4.10 ratio (Requires (L96) Vortec 6.0L V8 SFI engine or (LC8) 6.0L V8 SFI Gaseous CNG/LPG capable engine.)
- Transmission, 6-speed automatic, heavy-duty, electronically controlled with overdrive and tow/haul mode. Includes Cruise Grade Braking and Powertrain Grade Braking (Requires (L96) Vortec 6.0L V8 SFI engine or (LC8) 6.0L V8 SFI Gaseous CNG/LPG capable engine.)
- Engine, Vortec 6.0L Variable Valve Timing V8 SFI, E85-compatible, FlexFuel capable of running on unleaded or up to 85% ethanol (360 hp [268.4 kW] @ 5400 rpm, 380 lb-ft of torque [515.0 N-m] @ 4200 rpm) (Does not include E85 capability with (ZW9) pickup box delete.)

## Option Packages

### Factory Installed

## Packages

ENGINE, VORTEC 6.0L VARIABLE  
VALVE TIMING V8 SFI, E85-  
COMPATIBLE, FLEXFUEL

capable of running on unleaded or  
up to 85% ethanol (360 hp  
[268.4 kW] @ 5400 rpm, 380  
lb-ft of torque [515.0 N-m] @  
4200 rpm)

AIRBAG DEACTIVATION SWITCH,  
FRONTAL PASSENGER-SIDE



[workvansandtrucks.com](http://workvansandtrucks.com)

501-847-2727

25637 I-30

Bryant, AR 72022

© 2021 AutoRevo - All rights reserved. - Powered by AutoRevo