

2020 Ram ProMaster Cargo Van 136WB LOW ROOF CARGO

View this car on our website at workvansandtrucks.com/6839996/ebrochure



Our Price **\$0**

Retail Value ~~\$29,995~~

Specifications:

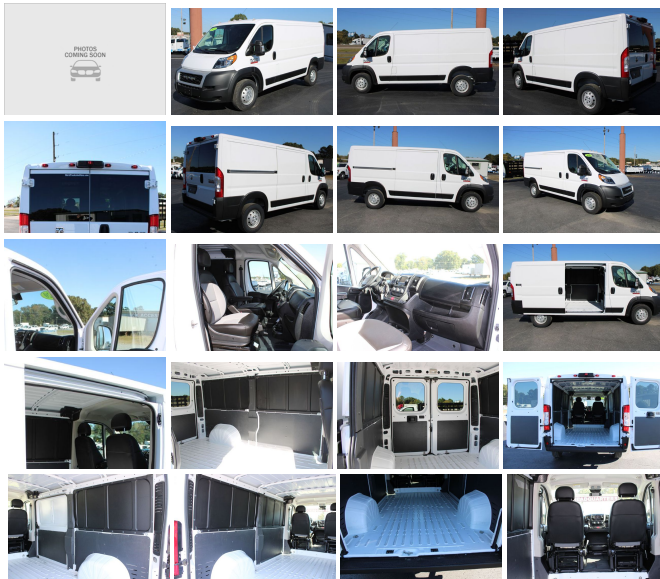
Year:	2020
VIN:	3C6TRVAG6LE105477
Make:	Ram
Stock:	C2550
Model/Trim:	ProMaster Cargo Van 136WB LOW ROOF CARGO
Condition:	Pre-Owned
Body:	Minivan/Van
Exterior:	WHITE
Engine:	ENGINE: 3.6L V6 24V VVT
Mileage:	12,203
Drivetrain:	Front Wheel Drive

2020 RAM 1500 PROMASTER 136 WB LOW ROOF CARGO 3.6l GAS ENGINE, AUTOMATIC TRANSMISSION.

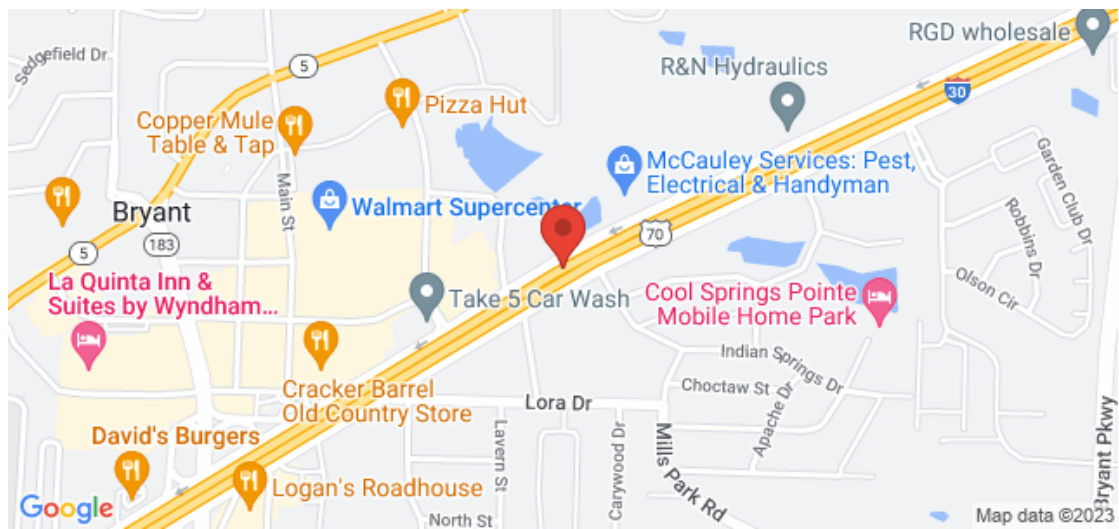
This Short wheelbase work van comes with Power Windows Tilt / Telescopic Steering Wheel, Blue Tooth, Phone Controls, Cruise Control, Key-Fob, Tow Haul Mode, am/fm/xm/radio, Backup Camera, Vinyl Floor, Vinyl Seats,

Wall Liner Package.

Current Oil and Filter Service.



Our Location :



2020 Ram ProMaster Cargo Van 136WB LOW ROOF CARGO

T & B Auto Sales - 501-847-2727 - View this car on our website at workvansandtrucks.com/6839996/ebrochure

Installed Options

Interior

- 4-Way Driver Seat -inc: Manual Recline and Fore/Aft Movement
- 4-Way Passenger Seat -inc: Manual Recline and Fore/Aft Movement
- Manual Telescoping Steering Column
- Gauges -inc: Speedometer, Odometer, Engine Coolant Temp, Tachometer, Trip Odometer and Trip Computer
- Front Cupholder
- Remote Keyless Entry w/Integrated Key Transmitter and Illuminated Entry
- Manual Air Conditioning- Glove Box- Driver Foot Rest- Front Cloth Headliner
- Urethane Gear Shifter Material- Cloth Bucket Seats- Day-Night Rearview Mirror
- 1 12V DC Power Outlet- Front Map Lights- Fade-To-Off Interior Lighting
- Front Only Vinyl/Rubber Floor Covering- Cargo Space Lights
- FOB Controls -inc: Cargo Access- 5.0" Touchscreen Display
- Instrument Panel Bin, Covered Dashboard Storage, Driver And Passenger Door Bins
- Power 1st Row Windows w/Driver And Passenger 1-Touch Down
- Power Door Locks w/Autolock Feature- Systems Monitor- Trip Computer
- Outside Temp Gauge- Analog Display- Seats w/Vinyl Back Material
- Fixed Front Head Restraints- Engine Immobilizer

Exterior

- Wheels: 16" x 6.0" Steel- Tires: LT225/75R16E BSW All Season- Center Wheel Cap
- Steel Spare Wheel- Full-Size Spare Tire Mounted Underbody- Clearcoat Paint
- Gray Front Bumper- Gray Rear Step Bumper
- Gray Bodyside Moldings and Gray Fender Flares- Black Side Windows Trim
- Black Door Handles
- Black Manual Side Mirrors w/Convex Spotter, Manual Folding and Turn Signal Indicator
- Trailer Style Mirrors- Light Tinted Glass- Variable Intermittent Wipers
- Fully Galvanized Steel Panels- Silver Grille- Sliding Rear Passenger Side Door
- Split Swing-Out Rear Cargo Access

- Tailgate/Rear Door Lock Included w/Power Door Locks
- Aero-Composite Halogen Headlamps- Cab Clearance Lights

Safety

- 4-Way Driver Seat -inc: Manual Recline and Fore/Aft Movement
- 4-Way Passenger Seat -inc: Manual Recline and Fore/Aft Movement
- Manual Telescoping Steering Column
- Gauges -inc: Speedometer, Odometer, Engine Coolant Temp, Tachometer, Trip Odometer and Trip Computer
- Front Cupholder
- Remote Keyless Entry w/Integrated Key Transmitter and Illuminated Entry
- Manual Air Conditioning- Glove Box- Driver Foot Rest- Front Cloth Headliner
- Urethane Gear Shifter Material- Cloth Bucket Seats- Day-Night Rearview Mirror
- 1 12V DC Power Outlet- Front Map Lights- Fade-To-Off Interior Lighting
- Front Only Vinyl/Rubber Floor Covering- Cargo Space Lights
- FOB Controls -inc: Cargo Access- 5.0" Touchscreen Display
- Instrument Panel Bin, Covered Dashboard Storage, Driver And Passenger Door Bins
- Power 1st Row Windows w/Driver And Passenger 1-Touch Down
- Power Door Locks w/Autolock Feature- Systems Monitor- Trip Computer
- Outside Temp Gauge- Analog Display- Seats w/Vinyl Back Material
- Fixed Front Head Restraints- Engine Immobilizer

Mechanical

- Engine: 3.6L V6 24V VVT- Transmission: 6-Speed Automatic 62TE- 3.86 Axle Ratio
- Medium Duty Suspension- GVWR: 8,550 lbs- 50 State Emissions
- Transmission w/Driver Selectable Mode, Sequential Shift Control and Oil Cooler
- Front-Wheel Drive- Engine Oil Cooler
- 95-Amp/Hr 800CCA Maintenance-Free Battery w/Run Down Protection
- 180 Amp Alternator- Towing Equipment -inc: Trailer Sway Control
- 3890# Maximum Payload- Gas-Pressurized Shock Absorbers- Front Anti-Roll Bar
- Hydraulic Power-Assist Steering- 24 Gal. Fuel Tank- Single Stainless Steel Exhaust
- Strut Front Suspension w/Coil Springs- Leaf Rear Suspension w/Leaf Springs
- 4-Wheel Disc Brakes w/4-Wheel ABS, Front And Rear Vented Discs, Brake Assist and Hill Hold Control
- Brake Actuated Limited Slip Differential

Option Packages

Factory Installed Packages

-
ENGINE: 3.6L V6 24V VVT



workvansandtrucks.com

501-847-2727

25637 I-30

Bryant, AR 72022

© 2023 AutoRevo - All rights reserved. - Powered by AutoRevo