

# 2019 Ram ProMaster Cargo Van 136WB LOW ROOF CARGO VAN

View this car on our website at [workvansandtrucks.com/6839994/ebrochure](http://workvansandtrucks.com/6839994/ebrochure)



Our Price **\$0**

Retail Value ~~\$28,995~~

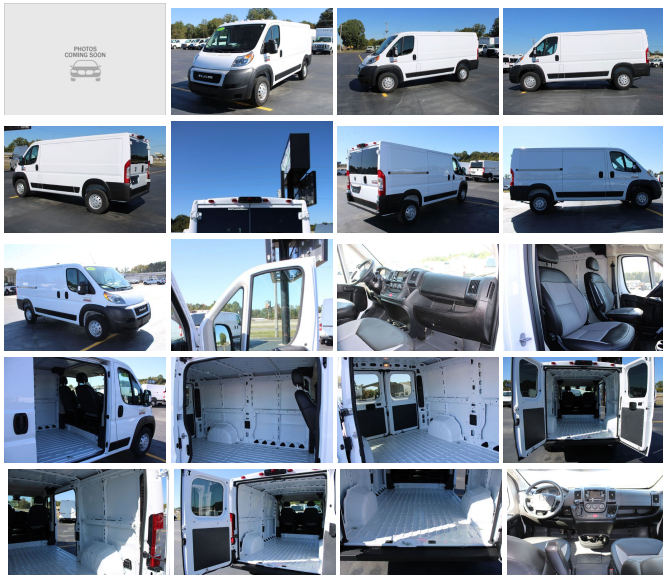
## Specifications:

<b>Year:</b>	2019
<b>VIN:</b>	3C6TRVAG6KE516506
<b>Make:</b>	Ram
<b>Stock:</b>	C2557
<b>Model/Trim:</b>	ProMaster Cargo Van 136WB LOW ROOF CARGO VAN
<b>Condition:</b>	Pre-Owned
<b>Body:</b>	Minivan/Van
<b>Exterior:</b>	WHITE
<b>Engine:</b>	ENGINE: 3.6L V6 24V VVT
<b>Interior:</b>	GRAY
<b>Mileage:</b>	16,345
<b>Drivetrain:</b>	Front Wheel Drive

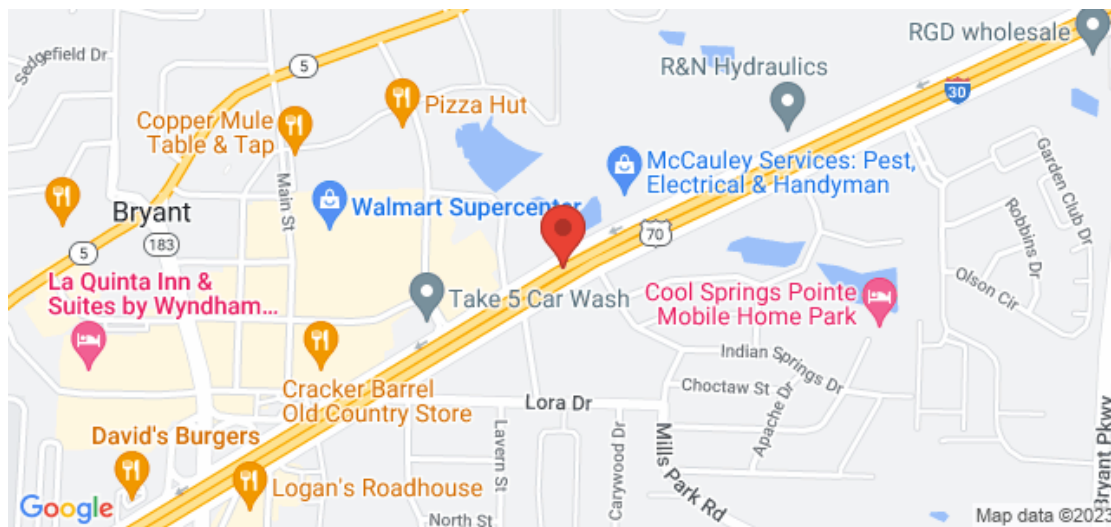
2019 RAM 1500 PROMASTER 136 WB LOW ROOF CARGO VAN 3.6 6CYL GAS ENGINE, AUTOMATIC TRANSMISSION.

This 1/2 ton rated work van comes with Power Windows, Power Door Locks, Manual Mirrors, Blue Tooth, Phone Controls, Cruise Control, Tilt / Telescopic Steering Wheel, Key Fob, Tow Haul Mode, am/fm/xm/ touch screen radio, Backup Camera, Vinyl Sets, Vinyl Floor, Sliding Side Door, Barn Style Rear Doors.

Current Oil and Filter Service.



## Our Location :



2019 Ram ProMaster Cargo Van 136WB LOW ROOF CARGO VAN

T & B Auto Sales - 501-847-2727 - View this car on our website at [workvansandtrucks.com/6839994/ebrochure](http://workvansandtrucks.com/6839994/ebrochure)

## Installed Options

### Interior

- 4-Way Driver Seat -inc: Manual Recline and Fore/Aft Movement
- 4-Way Passenger Seat -inc: Manual Recline and Fore/Aft Movement
- Manual Telescoping Steering Column
- Gauges -inc: Speedometer, Odometer, Engine Coolant Temp, Tachometer, Trip Odometer and Trip Computer
- Front Cupholder
- Remote Keyless Entry w/Integrated Key Transmitter and Illuminated Entry
- Manual Air Conditioning- Glove Box- Driver Foot Rest- Front Cloth Headliner
- Urethane Gear Shifter Material- Cloth Bucket Seats- Day-Night Rearview Mirror
- 1 12V DC Power Outlet- Front Map Lights- Fade-To-Off Interior Lighting
- Front Only Vinyl/Rubber Floor Covering- Cargo Space Lights
- FOB Controls -inc: Cargo Access- 5.0" Touchscreen Display
- Instrument Panel Bin, Covered Dashboard Storage, Driver And Passenger Door Bins
- Power 1st Row Windows w/Driver And Passenger 1-Touch Down
- Power Door Locks w/Autolock Feature- Systems Monitor- Trip Computer
- Outside Temp Gauge- Analog Display- Seats w/Vinyl Back Material
- Fixed Front Head Restraints- Engine Immobilizer

### Exterior

- Wheels: 16" x 6.0" Steel- Tires: LT225/75R16E BSW All Season- Center Wheel Cap
- Steel Spare Wheel- Full-Size Spare Tire Mounted Underbody- Clearcoat Paint
- Gray Front Bumper- Gray Rear Step Bumper
- Gray Bodyside Moldings and Gray Fender Flares- Black Side Windows Trim
- Black Door Handles
- Black Manual Side Mirrors w/Convex Spotter, Manual Folding and Turn Signal Indicator
- Trailer Style Mirrors- Light Tinted Glass- Variable Intermittent Wipers
- Fully Galvanized Steel Panels- Silver Grille- Sliding Rear Passenger Side Door
- Split Swing-Out Rear Cargo Access

- Tailgate/Rear Door Lock Included w/Power Door Locks
- Aero-Composite Halogen Headlamps- Cab Clearance Lights

## Safety

- 4-Way Driver Seat -inc: Manual Recline and Fore/Aft Movement
- 4-Way Passenger Seat -inc: Manual Recline and Fore/Aft Movement
- Manual Telescoping Steering Column
- Gauges -inc: Speedometer, Odometer, Engine Coolant Temp, Tachometer, Trip Odometer and Trip Computer
- Front Cupholder
- Remote Keyless Entry w/Integrated Key Transmitter and Illuminated Entry
- Manual Air Conditioning- Glove Box- Driver Foot Rest- Front Cloth Headliner
- Urethane Gear Shifter Material- Cloth Bucket Seats- Day-Night Rearview Mirror
- 1 12V DC Power Outlet- Front Map Lights- Fade-To-Off Interior Lighting
- Front Only Vinyl/Rubber Floor Covering- Cargo Space Lights
- FOB Controls -inc: Cargo Access- 5.0" Touchscreen Display
- Instrument Panel Bin, Covered Dashboard Storage, Driver And Passenger Door Bins
- Power 1st Row Windows w/Driver And Passenger 1-Touch Down
- Power Door Locks w/Autolock Feature- Systems Monitor- Trip Computer
- Outside Temp Gauge- Analog Display- Seats w/Vinyl Back Material
- Fixed Front Head Restraints- Engine Immobilizer

## Mechanical

- Engine: 3.6L V6 24V VVT- Transmission: 6-Speed Automatic 62TE- 3.86 Axle Ratio
- Medium Duty Suspension- GVWR: 8,550 lbs- 50 State Emissions
- Transmission w/Driver Selectable Mode, Sequential Shift Control and Oil Cooler
- Front-Wheel Drive- Engine Oil Cooler
- 95-Amp/Hr 800CCA Maintenance-Free Battery w/Run Down Protection
- 180 Amp Alternator- Towing Equipment -inc: Trailer Sway Control
- 3890# Maximum Payload- Gas-Pressurized Shock Absorbers- Front Anti-Roll Bar
- Hydraulic Power-Assist Steering- 24 Gal. Fuel Tank- Single Stainless Steel Exhaust
- Strut Front Suspension w/Coil Springs- Leaf Rear Suspension w/Leaf Springs
- 4-Wheel Disc Brakes w/4-Wheel ABS, Front And Rear Vented Discs, Brake Assist and Hill Hold Control
- Brake Actuated Limited Slip Differential

## Option Packages

### Factory Installed Packages

-  
ENGINE: 3.6L V6 24V VVT



[workvansandtrucks.com](http://workvansandtrucks.com)

501-847-2727

25637 I-30

Bryant, AR 72022

© 2023 AutoRevo - All rights reserved. - Powered by AutoRevo