

3075 Leon Rd
Jacksonville , FL 32246

2008 Chevrolet Express Van Quigley 4x4 Duramax diesel

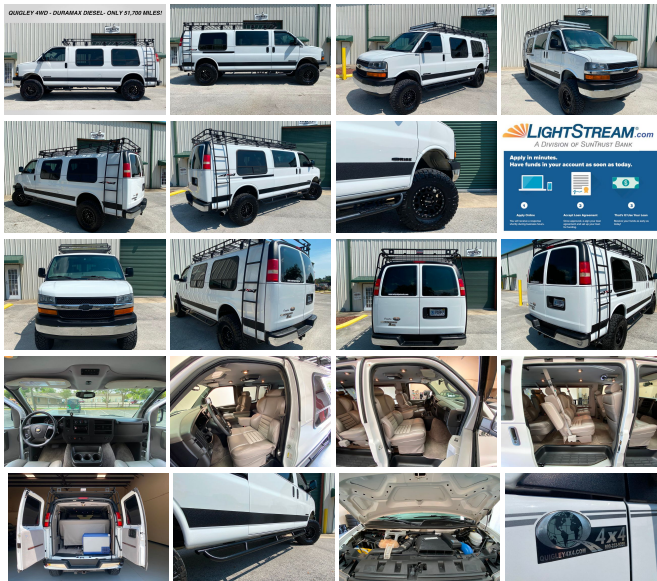
Nolan Hill

View this car on our website at premierautomotivesource.com/6839912/ebrochure

QUIGLEY 4WD - DURAMAX DIESEL- ONLY 51,700 MILES!



WATCH OUR WALK AROUND & TEST DRIVE VIDEO!



Our Price \$0

Specifications:

Year:	2008
VIN:	1GCHG396281157994
Make:	Chevrolet
Model/Trim:	Express Van Quigley 4x4 Duramax diesel
Condition:	Pre-Owned
Body:	Minivan/Van
Exterior:	Summit White
Engine:	ENGINE, DURAMAX 6.6L TURBO DIESEL V8
Interior:	Gray Leather
Transmission:	Automatic
Mileage:	51,650
Drivetrain:	4 Wheel Drive

2008 CHEVY EXPRESS 3500 VAN

- WATCH OUR WALK AROUND & TEST DRIVE VIDEO -
- HARD TO FIND QUIGLEY 4X4 -
- 6.6 DURAMAX DIESEL ENGINE -
- ROCKY RIDGE CONVERSION VAN -
- 6" SUSPENSION LIFT -
- CUSTOM ROOF RACK WITH LADDERS -
- CUSTOM SIDE STEPS -
- 17" METHOD 105 BEADLOCK WHEELS -
- 35X12.50X17 NITTO TIRES -
- LED LIGHT BARS -
- ARB REFRIGERATOR -

COLD A/C

SOUTHERN VAN

NO RUST

- TRADES WELCOME -

- WE SELL & SHIP WORLDWIDE -

**QUESTIONS? CALL NOLAN @ 904
382 7230**

FOR FINANCING WE
RECOMMEND <http://LIGHTSTREAM.COM>

Lifted 2008 Quigley 4WD 3500 Chevrolet Express. 6.6 Duramax diesel engine, Automatic Transmission, Rocky Ridge conversion van with custom leather interior with seating for 9 and the power rear bench seat folds into a bed. 6" Zone suspension lift. Custom roof rack with LED light bars, dual ladders and Custom side steps built by Full pen fab in Ocala FL. Method 105 Beadlock wheels with 35x12.50x17 Nitto A/T tires, and ARB refrigerator. The Carfax history reports 2 owners, no accidents, or issues. This one of a kind Diesel, 4WD, lifted, conversion van is a very clean southern van. It has been well maintained, it runs, drives, and looks great. Sold with 2 keys. PLEASE WATCH OUR WALK AROUND AND TEST DRIVE VIDEO.

Call Nolan: 904-382-7230. Trades accepted. All applicable sales tax, title registration and a \$299 document fees apply. ALL INVENTORY IS STORED INDOORS AND SHOWN BY APPOINTMENT.

Also check us out at:

http://www.instagram.com/nolan_premierautosource/

<https://www.facebook.com/premierautosource/>

<http://youtube.com/premierautosource/>

#PREMIERAUTOSOURCE

#PREMIERJEEPSOURCE

2008 Chevrolet Express Van Quigley 4x4 Duramax diesel
Premier Automotive Source LLC - - View this car on our website at premierautomotivesource.com/6839912/ebrochure

Our Location :



2008 Chevrolet Express Van Quigley 4x4 Duramax diesel
Premier Automotive Source LLC - - View this car on our website at premierautomotivesource.com/6839912/ebrochure

Installed Options

Interior

- Air conditioning, single-zone manual
- Power outlets, 2 auxiliary on engine console cover with covers, 12-volt
- Seating arrangement, driver and front passenger high-back buckets, adjustable with head restraints and vinyl or cloth trim
- Seats, front bucket with vinyl trim and outboard head restraints (Requires (**W) interior trim.)
- Tow/haul mode selector, instrument panel-mounted- Assist handle, front passenger
- Console, engine cover with open storage bin
- Cup holders, 3 on the engine console cover - Defogger, side windows
- Driver Information Center, includes fuel range, average speed, oil life, and tire pressure monitoring, fuel used, ice warning, engine hours, average fuel economy, tachometer, and maintenance reminders. Compass and outside temperature available if equipped.
- Floor covering, full-length Black rubberized-vinyl (Not standard with (YF2) Ambulance Package.)
- Headliner, cloth, over driver and passenger (Not included with (YF2) Ambulance Package.)
- Instrumentation, analog with speedometer, odometer with trip odometer, fuel level, voltmeter, engine temperature and oil pressure
- Lighting, interior with 2 dome lights, defeat switch and door handle-activated switches
- Mirror, inside rearview manual day/night- Oil life monitor
- Steering wheel, steel sleeve column with theft-deterrent locking feature, Black
- Theft-deterrent system, vehicle, PASS-Key III - Visors, driver and front passenger, padded
- Warning tones, headlamp on and key-in-ignition

Option Packages

Factory Installed Packages

ENGINE, DURAMAX 6.6L TURBO DIESEL V8 (Includes external engine oil cooler and two 770 cold cranking amp batteries.	\$7,795
---	---------

SUMMIT WHITE

DOOR, SLIDING PASSENGER-SIDE (Includes trim panel standard on sliding door only.	\$150
---	-------

Option Packages Total	\$7,945
-----------------------	---------

Exterior

- Tire, spare LT245/75R16E all-season, blackwall, located at rear underbody of vehicle (Standard on the *G23*05 and *G33*05 models.)
- Wheels, Gray-painted, includes Gray center caps and steel spare
- Bumpers, front and rear painted Black with step-pad (Not available with (ZR7) Chrome Appearance Package.)
- Door, swing-out passenger-side, 60/40 split - Glass, Solar-Ray light-tinted, all windows
- Grille, Black composite with single rectangular halogen headlamps (Not available with (ZR7) Chrome Appearance Package.)
- Headlamps, single halogen (Not available with (ZR7) Chrome Appearance Package.)
- License plate kit, front- Mirrors, outside manual, Black
- Tires, front LT245/75R16E all-season, blackwall (Standard on the *G23*05 and *G33*05 models.)
- Tires, rear LT245/75R16E all-season, blackwall (Standard on the *G23*05 and *G33*05 models.)
- Wipers, front intermittent wet-arm with pulse washers

Safety

- Air conditioning, single-zone manual
- Power outlets, 2 auxiliary on engine console cover with covers, 12-volt
- Seating arrangement, driver and front passenger high-back buckets, adjustable with head restraints and vinyl or cloth trim
- Seats, front bucket with vinyl trim and outboard head restraints (Requires (**W) interior trim.)
- Tow/haul mode selector, instrument panel-mounted- Assist handle, front passenger
- Console, engine cover with open storage bin
- Cup holders, 3 on the engine console cover - Defogger, side windows
- Driver Information Center, includes fuel range, average speed, oil life, and tire pressure monitoring, fuel used, ice warning, engine hours, average fuel economy, tachometer, and maintenance reminders. Compass and outside temperature available if equipped.
- Floor covering, full-length Black rubberized-vinyl (Not standard with (YF2) Ambulance Package.)
- Headliner, cloth, over driver and passenger (Not included with (YF2) Ambulance Package.)
- Instrumentation, analog with speedometer, odometer with trip odometer, fuel level, voltmeter, engine temperature and oil pressure
- Lighting, interior with 2 dome lights, defeat switch and door handle-activated switches
- Mirror, inside rearview manual day/night- Oil life monitor
- Steering wheel, steel sleeve column with theft-deterrent locking feature, Black
- Theft-deterrent system, vehicle, PASS-Key III - Visors, driver and front passenger, padded
- Warning tones, headlamp on and key-in-ignition

Mechanical

- Engine, Vortec 4.8L V8 SFI (279 hp [208 kW] @ 5200 rpm, 294 lb-ft of torque [396.9 N-m] @ 4500 rpm) (Includes external engine oil cooler. Standard on *G23*05 models and *G33*05 models. Reference the Engine/Axle page for availability.)
- Transmission, 4-speed automatic, heavy-duty, electronically controlled with overdrive, tow/haul mode and internal transmission oil cooler (Required and standard when ordered with (LY2) Vortec 4.8L V8 SFI engine or (LY6) Vortec 6.0L V8 SFI engine. Not available with (LMM) Duramax 6.6L Turbo Diesel V8 engine. Reference the Engine/Axle page for availability.)
- Alternator, 105 amps (Not available with (LMM) Duramax 6.6L Turbo Diesel V8 engine.)
- Battery, 600 cold-cranking amps, maintenance-free with rundown protection and retained accessory power
- Body, standard- Exhaust, aluminized stainless-steel muffler and tailpipe
- Frame, full-length box ladder-type
- GVWR, 9600 lbs. (4354 kg) (Standard on *G33*05 models. Reference the Engine/Axle page for availability.)
- Rear axle, 3.73 ratio (Standard on the *G23*05 and *G33*05 models. Available on ** 13405 models with (LMF) Vortec 5.3L V8 SFI engine. Reference the Engine/Axle page for availability)
- Rear wheel drive- Steering, power
- Suspension, front independent with coil springs and stabilizer bar (Requires *G***05 models.)
- Suspension, rear hypoid drive axle with multi-leaf springs

DEALER POLICIES: Please review all photos carefully and ask questions prior to making an offer if there is anything you are not sure about. We welcome pre-sale inspections. Any descriptions we make of vehicles shall not be construed as any type of warranty. Our pictures are as thorough and precise as we can make them. Please be advised that this is not a brand new vehicle. It is a pre-owned vehicle and has previously been driven, so therefore with respect to the miles there will most likely be average wear and tear, such as minor scratches, minor dings, or small rock chips. We do our best to disclose any substantial blemishes in our photos and descriptions. If our vehicles include manuals, service records or extra sets of keys, it will be shown in the pictures and noted in the description. The advertised mileage is a round number and may vary slightly from the exact mileage due to demo and test drives. Once a vehicle leaves our premises, no refunds, credits, or adjustments, will be issued. All Vehicles are conveyed AS-IS. Dealer neither makes nor implies any warranty on this or any vehicle. Any dispute that may arise shall take place under the laws of the state of Florida, in the state of Florida and all sales are subject to binding Arbitration under the rules of the American Arbitration Association. All applicable sales tax, tag and title fees apply. When we receive a vehicle into our inventory, sometimes the title is being

held by a bank or lender as collateral for the previous loan or payoff. Occasionally there is a delay in receiving the title from these lending institutions after payoff of the loan for up to two weeks. While we usually have the titles in our possession, there are instances where we may be waiting for the title to arrive. We guarantee clean titles on our vehicles unless otherwise noted. In some cases we may hold titles until cashiers checks or other funds are cleared or unless other arrangements were agreed upon. Titles will be sent via Fedex for proper tracking. Thank you for your patience and understanding.

Premier Automotive Source LLC

premierautomotivesource.com

3075 Leon Rd

Jacksonville , FL 32246

© 2024 AutoRevo - All rights reserved. - Powered by AutoRevo