



## 2014 RAM 3500 MEGA CAB 4X4 CUMMINS LOW MILES RARE COMBO

**Our Price \$43,500**

View this vehicle on our website at [njtruckking.com](http://njtruckking.com)

King of Cars and Trucks

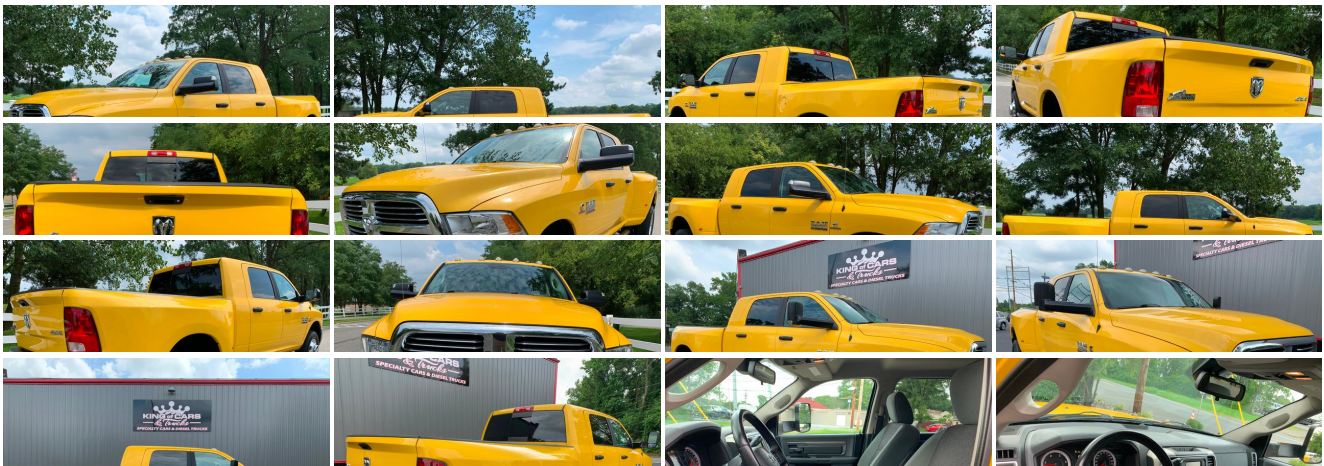
856-693-3181

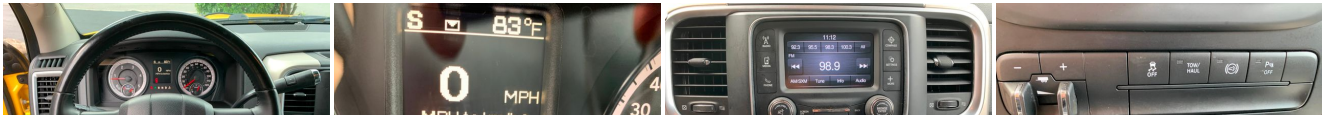
1229 Broadway , Westville, New Jersey 08093

Photos

Details

Contact





## Specifications:

<b>Year:</b>	2014
<b>VIN:</b>	3C63RRLL9EG330467
<b>Make:</b>	RAM 3500 MEGA CAB
<b>Model/Trim:</b>	4X4 CUMMINS LOW MILES RARE COMBO
<b>Condition:</b>	Pre-Owned
<b>Body:</b>	Pickup Truck
<b>Exterior:</b>	Detonator Yellow Clearcoat
<b>Engine:</b>	ENGINE: 6.7L I6 CUMMINS TURBO DIESEL
<b>Interior:</b>	Gray
<b>Mileage:</b>	53,585
<b>Drivetrain:</b>	4 Wheel Drive

## Vehicle Description

2014 RAM 3500 MEGA CAB 4X4

~RARE DETONATOR YELLOW~

6.7L CUMMINS TURBO DIESEL

AUTOMATIC TRANSMISSION

( ONLY 53,585 ORIGINAL / ACTUAL MILES )

1-OWNER

CLEAN CARFAX !

BEST COLOR COMBO

BONE STOCK !

TOW PACKAGE

BACK UP CAMERA

BACK UP SENSORS

SIRIUS RADIO READY

REMOTE START !

TIRES IN EXCELLENT CONDITION

ORIGINAL OWNERS MANUALS

IT IS A TRUE HEAD TURNER !

BEST OF THE BEST

\$43,500

CALL / TEXT AARON 856-693-9370 WITH ANY QUESTIONS

## Installed Options

### Interior

- 40/20/40 Split Bench Seat
- Full Carpet Floor Covering -inc: Carpet Front And Rear Floor Mats
- Gauges -inc: Speedometer, Odometer, Voltmeter, Oil Pressure, Engine Coolant Temp, Tachometer, Oil Temperature, Transmission Fluid Temp, Engine Hour Meter, Trip Odometer and Trip Computer
- Integrated Voice Command w/Bluetooth- Passenger Visor Vanity Mirror
- Power 1st Row Windows w/Driver And Passenger 1-Touch Up/Down
- Power Door Locks w/Autolock Feature- Power Rear Windows
- Remote Keyless Entry w/Integrated Key Transmitter, Illuminated Entry and Panic Button
- Remote Start System- Trip Computer
- 4-Way Driver Seat -inc: Manual Recline and Fore/Aft Movement
- 4-Way Passenger Seat -inc: Manual Recline and Fore/Aft Movement - Analog Display
- Cargo Area Concealed Storage- Compass- Cruise Control w/Steering Wheel Controls
- Day-Night Rearview Mirror- Delayed Accessory Power- Engine Immobilizer
- Fade-To-Off Interior Lighting- Front Armrest w/Cupholders- Front Map Lights
- Full Cloth Headliner- Glove Box- HVAC -inc: Underseat Ducts and Console Ducts
- Instrument Panel Bin, Dashboard Storage, Driver / Passenger And Rear Door Bins
- Interior Trim -inc: Deluxe Sound Insulation, Metal-Look Instrument Panel Insert, Metal-Look Door Panel Insert and Chrome/Metal-Look Interior Accents
- Manual Adjustable Front Head Restraints and Manual Adjustable Rear Head Restraints
- Manual Air Conditioning- Manual Tilt Steering Column- Mini Overhead Console
- Outside Temp Gauge- Pickup Cargo Box Lights- Rear 60/40 Split Folding Seat
- Rear Center Armrest- Rear Cupholder- Redundant Digital Speedometer
- Systems Monitor- Urethane Gear Shifter Material- Valet Function
- Vinyl Door Trim Insert

### Exterior

- Manual Tailgate/Rear Door Lock- Tires: LT275/70R18E BSW AS
- Wheels: 18" x 8" Polished Forged Aluminum
- Black Power Heated Side Mirrors w/Convex Spotter, Manual Folding and Turn Signal Indicator
- Black Side Windows Trim and Black Front Windshield Trim
- Cargo Lamp w/High Mount Stop Light- Center Hub- Chrome Door Handles
- Chrome Front Bumper w/2 Tow Hooks- Chrome Rear Step Bumper- Clearcoat Paint
- Deep Tinted Glass- Fog Lamps- Front License Plate Bracket
- Full-Size Spare Tire Stored Underbody w/Crankdown
- Fully Automatic Aero-Composite Halogen Headlamps w/Delay-Off
- Fully Galvanized Steel Panels- Manual Extendable Trailer Style Mirrors
- Perimeter/Approach Lights- Power Rear Window- Regular Box Style
- Steel Spare Wheel- Tailgate Rear Cargo Access- Variable Intermittent Wipers
- Vendor Painted Cargo Box Tracking

### Safety

- 40/20/40 Split Bench Seat
- Full Carpet Floor Covering -inc: Carpet Front And Rear Floor Mats
- Gauges -inc: Speedometer, Odometer, Voltmeter, Oil Pressure, Engine Coolant Temp, Tachometer, Oil Temperature, Transmission Fluid Temp, Engine Hour Meter, Trip Odometer and Trip Computer
- Integrated Voice Command w/Bluetooth- Passenger Visor Vanity Mirror
- Power 1st Row Windows w/Driver And Passenger 1-Touch Up/Down
- Power Door Locks w/Autolock Feature- Power Rear Windows
- Remote Keyless Entry w/Integrated Key Transmitter, Illuminated Entry and Panic Button
- Remote Start System- Trip Computer
- 4-Way Driver Seat -inc: Manual Recline and Fore/Aft Movement

## Option Packages

### Factory Installed Packages

---

ENGINE: 6.7L I6 CUMMINS TURBO DIESEL -inc: Selective Catalytic Reduction (Urea), 180 Amp Alternator, Cummins Turbo Diesel Badge, Current Generation Engine Controller, Diesel Exhaust Brake, 5.5 Additional Gallons of Diesel, RAM Active Air, GVWR: 12,400 lbs	<b>\$8,160</b>
--	----------------

---

Option Packages Total	<b>\$8,160</b>
-----------------------	----------------

- 4-Way Driver Seat -inc: Manual Recline and Fore/Aft Movement
- 4-Way Passenger Seat -inc: Manual Recline and Fore/Aft Movement - Analog Display
- Cargo Area Concealed Storage- Compass- Cruise Control w/Steering Wheel Controls
- Day-Night Rearview Mirror- Delayed Accessory Power- Engine Immobilizer
- Fade-To-Off Interior Lighting- Front Armrest w/Cupholders- Front Map Lights
- Full Cloth Headliner- Glove Box- HVAC -inc: Underseat Ducts and Console Ducts
- Instrument Panel Bin, Dashboard Storage, Driver / Passenger And Rear Door Bins
- Interior Trim -inc: Deluxe Sound Insulation, Metal-Look Instrument Panel Insert, Metal-Look Door Panel Insert and Chrome/Metal-Look Interior Accents
- Manual Adjustable Front Head Restraints and Manual Adjustable Rear Head Restraints
- Manual Air Conditioning- Manual Tilt Steering Column- Mini Overhead Console
- Outside Temp Gauge- Pickup Cargo Box Lights- Rear 60/40 Split Folding Seat
- Rear Center Armrest- Rear Cupholder- Redundant Digital Speedometer
- Systems Monitor- Urethane Gear Shifter Material- Valet Function
- Vinyl Door Trim Insert

---

## Mechanical

- Engine: 5.7L V8 HEMI VVT
- Transmission w/Driver Selectable Mode, Sequential Shift Control and Oil Cooler
- Transmission: 6-Speed Automatic 66RFE- 160 Amp Alternator- 3.73 Rear Axle Ratio
- 31 Gal. Fuel Tank
- 4-Wheel Disc Brakes w/4-Wheel ABS, Front And Rear Vented Discs, Brake Assist and Hill Hold Control
- 4430# Maximum Payload- 730CCA Maintenance-Free Battery w/Run Down Protection
- Anti-Spin Differential Rear Axle- Auto Locking Hubs
- Class V Towing Equipment -inc: Hitch, Brake Controller and Trailer Sway Control
- Electronic Transfer Case- Front Anti-Roll Bar- GVWR: 11,300 lbs
- HD Shock Absorbers- Hydraulic Power-Assist Steering
- Leaf Rear Suspension w/Leaf Springs- Multi-Link Front Suspension w/Coil Springs
- Part-Time Four-Wheel Drive- Single Stainless Steel Exhaust- Tip Start
- Trailer Wiring Harness

King of Cars and Trucks

King of Cars and Trucks

View this car on our website at [njtruckking.com/6838860](http://njtruckking.com/6838860)

Website: [njtruckking.com](http://njtruckking.com)

Phone: [856-693-3181](tel:856-693-3181)

Map: [1229 Broadway, Westville, New Jersey 08093](#)

