

2019 Chevrolet Express Cargo Van WT 135WB CARGO VAN

View this car on our website at workvansandtrucks.com/6838614/ebrochure



Our Price **\$0**

Retail Value **\$26,900**

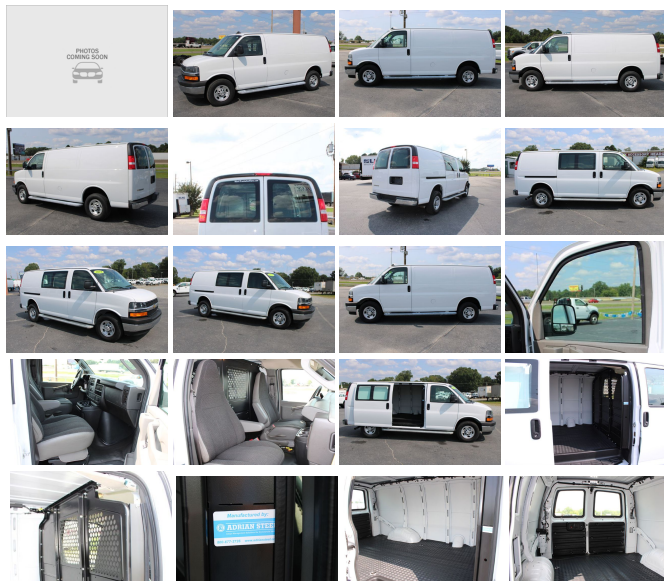
Specifications:

Year:	2019
VIN:	1GCWGAFG7K1286121
Make:	Chevrolet
Stock:	C2562
Model/Trim:	Express Cargo Van WT 135WB CARGO VAN
Condition:	Pre-Owned
Body:	Minivan/Van
Exterior:	WHITE
Engine:	ENGINE, VORTEC 6.0L V8 SFI FLEXFUEL
Mileage:	12,730
Drivetrain:	Rear Wheel Drive

2019 CHEVROLET 2500 EXPRESS WT 135WB CARGO VAN 6.0 GAS ENGINE AUTOMATIC TRANSMISSION.

This 3/4 Ton work van comes with Power Windows, Power Door Locks, Manual Mirrors, Manual Mirrors, Tilt Steering Wheel, Cruise Control, Manual Shift Mode, Tow Haul Mode, Traction Control, Charging Ports, Vinyl Floor, Arm Rest on Both Seats, Tube Step Bars, Chrome Grill, Chrome Front and Rear Bumpers, Backup Camera.

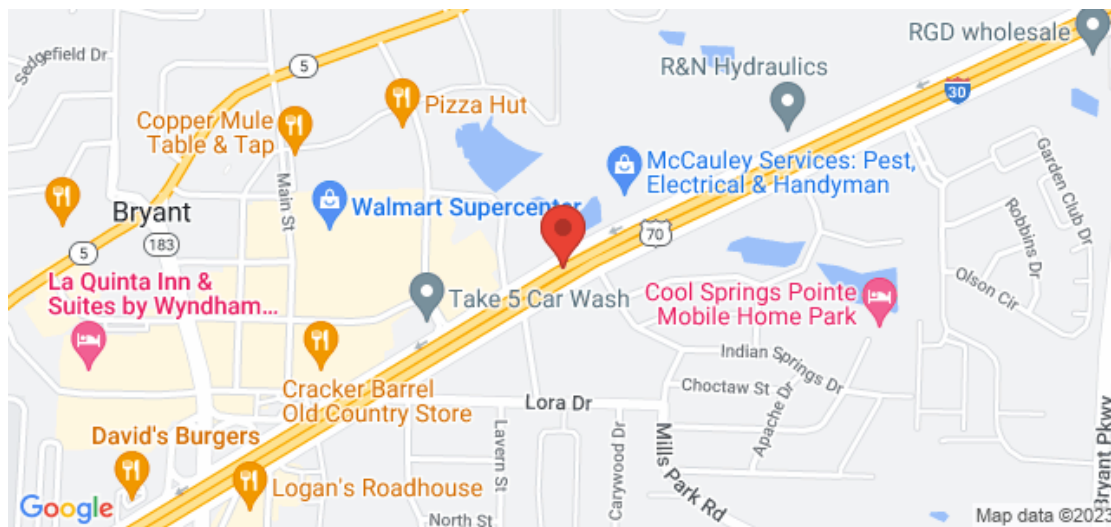
Aftermarket Up-Fit Adrian Steel Partition, Cargo Mat.



2019 Chevrolet Express Cargo Van WT 135WB CARGO VAN

T & B Auto Sales - 501-847-2727 - View this car on our website at workvansandtrucks.com/6838614/ebrochure

Our Location :



2019 Chevrolet Express Cargo Van WT 135WB CARGO VAN

T & B Auto Sales - 501-847-2727 - View this car on our website at workvansandtrucks.com/6838614/ebrochure

Installed Options

Interior

- Assist handles, driver and right-front passenger
- Lighting, interior with 4 dome lights 1 overhead and 3 LED's on cross members in cargo area, includes defeat switch and door handle-activated switches
- Cargo tie-downs 6 D-ring attachments on cargo area floor (Not available with (Y3H) Paratransit Package, (5BV) Upfitter electrical provisions or (ZP6) 5-passenger Express Crew Van.)
- Seats, front bucket with vinyl trim and outboard head restraints, includes inboard armrests. (Requires (**W) interior trim. Includes (DAA) driver and front passenger vinyl visors.)
- Seating arrangement, driver and front passenger high-back buckets with head restraints and vinyl or cloth trim (Not available with (AJ3) driver-side only frontal airbag.)
- Air conditioning, single-zone manual (Not available with (R6G) air conditioning delete.)
- Console, engine cover with open storage bin
- Floor covering, full-length Black rubberized-vinyl (Not available with (RFM) rear floor covering delete, (5BV) Upfitter electrical or (PCH) Hotel Shuttle Package.)
- Steering wheel, steel sleeve column with theft-deterrent locking feature, Black
- Instrumentation, analog with speedometer, odometer with trip odometer, fuel level, voltmeter, engine temperature and oil pressure
- Oil life monitor- Warning tones, headlamp on and key-in-ignition
- Driver Information Center includes fuel range, average speed, oil life, tire pressure monitoring, fuel used, ice warning, engine hours, average fuel economy, tachometer, and maintenance reminders. Compass and outside temperature available if equipped.
- Door locks, power with lock-out protection (Included with (ZQ2) Power Convenience Package. NOTE: Does not include (ATG) Remote Keyless Entry. (ATG) Remote Keyless Entry must be ordered separately.)
- Windows, power (Included with (ZQ2) Power Convenience Package.)
- Tow/haul mode selector, instrument panel-mounted
- Theft-deterrent system, vehicle, PASS-Key III- Defogger, side windows
- Cup holders, 3 on the engine console cover
- Power outlets, 2 auxiliary on engine console cover with covers, 12-volt
- Power outlet, 120-volt
- Trim panels, hinged rear side doors and hinged rear doors (Not available with (Y3H)

Paratransit Package or (5BV) Upfitter electrical provisions.)

- Mirror, inside rearview includes Rear Vision Camera display
- Headliner, cloth, over driver and passenger
- Visors, driver and front passenger, cloth, padded

Exterior

- Headlamps, dual halogen composite- Mirrors, outside manual, Black
- Glass, Solar-Ray light-tinted, all windows
- Bumpers, front and rear painted Black with step-pad
- Tires, rear LT245/75R16E all-season, blackwall
- Tires, front LT245/75R16E all-season, blackwall
- Door, swing-out passenger-side, 60/40 split
- Tire, spare LT245/75R16E all-season, blackwall located at rear underbody of vehicle
- Wheels, 4 - 16" x 6.5" (40.6 cm x 16.5 cm) steel includes Gray center caps and steel spare
- Wipers, front intermittent wet-arm with pulse washers

Safety

- Assist handles, driver and right-front passenger
- Lighting, interior with 4 dome lights 1 overhead and 3 LED's on cross members in cargo area, includes defeat switch and door handle-activated switches
- Cargo tie-downs 6 D-ring attachments on cargo area floor (Not available with (Y3H) Paratransit Package, (5BV) Upfitter electrical provisions or (ZP6) 5-passenger Express Crew Van.)
- Seats, front bucket with vinyl trim and outboard head restraints, includes inboard armrests. (Requires (**W) interior trim. Includes (DAA) driver and front passenger vinyl visors.)
- Seating arrangement, driver and front passenger high-back buckets with head restraints and vinyl or cloth trim (Not available with (AJ3) driver-side only frontal airbag.)
- Air conditioning, single-zone manual (Not available with (R6G) air conditioning delete.)
- Console, engine cover with open storage bin
- Floor covering, full-length Black rubberized-vinyl (Not available with (RFM) rear floor covering delete, (5BV) Upfitter electrical or (PCH) Hotel Shuttle Package.)
- Steering wheel, steel sleeve column with theft-deterrent locking feature, Black
- Instrumentation, analog with speedometer, odometer with trip odometer, fuel level, voltmeter, engine temperature and oil pressure
- Oil life monitor- Warning tones, headlamp on and key-in-ignition
- Driver Information Center includes fuel range, average speed, oil life, tire pressure monitoring, fuel used, ice warning, engine hours, average fuel economy, tachometer, and maintenance reminders. Compass and outside temperature available if equipped.
- Door locks, power with lock-out protection (Included with (ZQ2) Power Convenience Package. NOTE: Does not include (ATG) Remote Keyless Entry. (ATG) Remote Keyless Entry must be ordered separately.)
- Windows, power (Included with (ZQ2) Power Convenience Package.)
- Tow/haul mode selector, instrument panel-mounted
- Theft-deterrent system, vehicle, PASS-Key III - Defogger, side windows
- Cup holders, 3 on the engine console cover
- Power outlets, 2 auxiliary on engine console cover with covers, 12-volt
- Power outlet, 120-volt
- Trim panels, hinged rear side doors and hinged rear doors (Not available with (Y3H) Paratransit Package or (5BV) Upfitter electrical provisions.)
- Mirror, inside rearview includes Rear Vision Camera display
- Headliner, cloth, over driver and passenger
- Visors, driver and front passenger, cloth, padded

Mechanical

- Exhaust, aluminized stainless-steel muffler and tailpipe
- Fuel tank capacity, mid-frame and approximately 31 gallons (117.3L)
- Brakes, 4-wheel antilock, 4-wheel disc- Steering, power
- Suspension, rear hypoid drive axle with multi-leaf springs
- Suspension, front independent with coil springs and stabilizer bar
- Frame, full-length box ladder-type
- Alternator, 105 amps (Not available with (Y3H) Paratransit Package, (C69) rear air conditioning, (9L7) Wiring junction block equipment accessory, (5BV) Upfitter electrical provisions or (LWN) 2.8L Duramax Turbo-Diesel engine.)
- Battery, 600 cold-cranking amps, maintenance-free with rundown protection and retained accessory power
- Cooling, external engine oil cooler (Not available with (LWN) 2.8L Duamax Turbo-Diesel engine.)
- Rear wheel drive
- Transmission oil cooler, external (Not available with (LWN) 2.8L Duramax Turbo-Diesel engine.)
- GVWR, 8600 lbs. (3901 kg) (Reference the Engine/Axle page for availability.)
- Body, standard- Rear axle, 3.42 ratio (Reference the Engine/Axle page for availability.)
- Transmission, 8-speed automatic, electronically controlled with overdrive and tow/haul mode, includes Cruise Grade Braking and Powertrain Grade Braking (Requires (LV1) 4.3L

V6 SIDI engine or (LWN) 2.8L Duramax Turbo-Diesel engine.)

- Engine, 4.3L V6 with Direct Injection and Variable Valve Timing, includes aluminum block construction (276 hp [206 kW] @ 5200 rpm, 298 lb-ft of torque [404 Nm] @ 3900 rpm) (Reference the Engine/Axle page for availability.)

Option Packages

Factory Installed Packages

ENGINE, VORTEC 6.0L V8 SFI
FLEXFUEL
(341 hp [254.3 kW] @ 5400 rpm, \$995
373 lb-ft of torque [503.6 N-m]
@ 4200 rpm)

Option Packages Total
\$995



workvansandtrucks.com

501-847-2727

25637 I-30

Bryant, AR 72022

© 2023 AutoRevo - All rights reserved. - Powered by AutoRevo