



2017 Ram 3500 Chassis Cab Tradesman

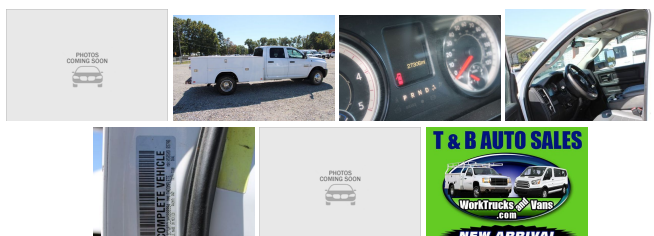
View this car on our website at workvansandtrucks.com/6836929/ebrochure



Our Price **\$0**

Specifications:

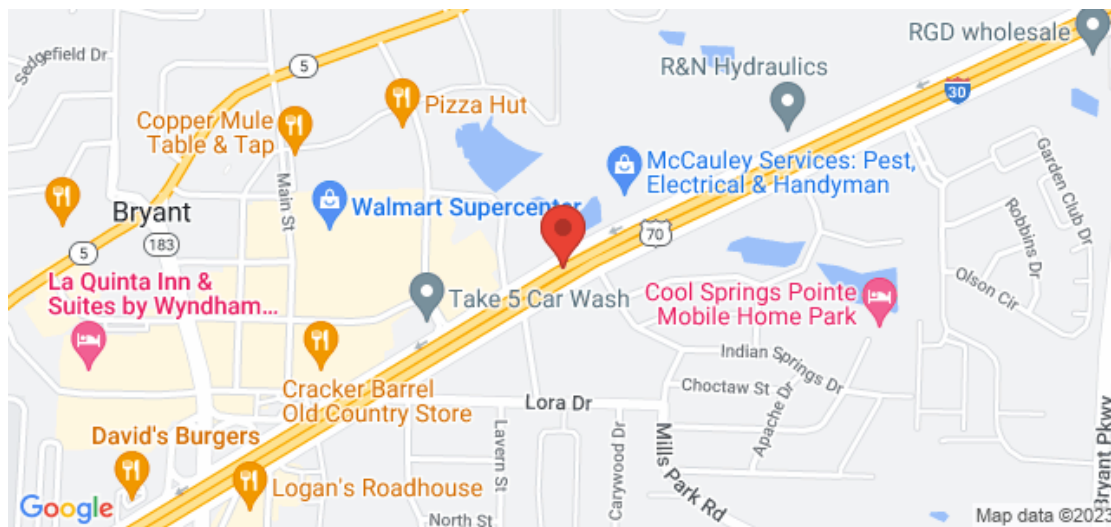
Year:	2017
VIN:	3C7WRTCLXHG666994
Make:	Ram
Stock:	U2549
Model/Trim:	3500 Chassis Cab Tradesman
Condition:	Pre-Owned
Body:	Pickup Truck
Exterior:	WHITE
Engine:	ENGINE: 6.7L I6 CUMMINS TURBO DIESEL
Mileage:	27,280
Drivetrain:	4 Wheel Drive



2017 Ram 3500 Chassis Cab Tradesman

T & B Auto Sales - 501-847-2727 - View this car on our website at workvansandtrucks.com/6836929/ebrochure

Our Location :



2017 Ram 3500 Chassis Cab Tradesman

T & B Auto Sales - 501-847-2727 - View this car on our website at workvansandtrucks.com/6836929/ebrochure

Installed Options

Interior

- Driver Seat- 4-Way Passenger Seat -inc: Manual Recline and Fore/Aft Movement
- Vinyl Rear Seat- Manual Tilt Steering Column
- Gauges -inc: Speedometer, Odometer, Voltmeter, Oil Pressure, Engine Coolant Temp, Tachometer, Oil Temperature, Engine Hour Meter, Trip Odometer and Trip Computer
- Power Rear Windows- Rear Folding Seat- Cruise Control w/Steering Wheel Controls
- Manual Air Conditioning- HVAC -inc: Underseat Ducts- Glove Box
- Interior Trim -inc: Deluxe Sound Insulation- Full Cloth Headliner
- Urethane Gear Shifter Material- HD Vinyl 40/20/40 Split Bench Seat
- Base Door Trim Panel- Day-Night Rearview Mirror- Passenger Visor Vanity Mirror
- 2 12V DC Power Outlets- Fade-To-Off Interior Lighting- Full Vinyl/Rubber Floor Covering
- Storage Tray- Mini Floor Console
- Instrument Panel Bin, Dashboard Storage, Driver / Passenger And Rear Door Bins
- Delayed Accessory Power
- Power 1st Row Windows w/Driver And Passenger 1-Touch Up/Down
- Power Door Locks w/Autolock Feature- Systems Monitor
- Redundant Digital Speedometer- Trip Computer- Analog Display
- Seats w/Vinyl Back Material- Armrests w/Storage
- Manual Adjustable Front Head Restraints and Manual Adjustable Rear Head Restraints
- 40/20/40 Split Bench Seat- Manual Adjust Seats- Sentry Key Engine Immobilizer

Exterior

- Wheels: 17" x 6" Argent Steel- Tires: LT235/80R17E BSW All-Season- Center Hub
- Nexen Brand Tires- Black Front Bumper
- Black Side Windows Trim and Black Front Windshield Trim - Black Door Handles
- Front Wheel Spats- Manual Extendable Trailer Style Mirrors
- Black Power Side Mirrors w/Convex Spotter and Manual Folding
- Exterior Mirrors w/Supplemental Signals- Exterior Mirrors w/Heating Element
- Fixed Rear Window- Light Tinted Glass- Variable Intermittent Wipers

- Fully Galvanized Steel Panels- Black Grille- Front License Plate Bracket
- Fully Automatic Aero-Composite Halogen Headlamps w/Delay-Off- Cab Clearance Lights
- Exterior Mirrors Courtesy Lamps- Electronically Controlled Throttle- Tip Start

Safety

- Driver Seat- 4-Way Passenger Seat -inc: Manual Recline and Fore/Aft Movement
- Vinyl Rear Seat- Manual Tilt Steering Column
- Gauges -inc: Speedometer, Odometer, Voltmeter, Oil Pressure, Engine Coolant Temp, Tachometer, Oil Temperature, Engine Hour Meter, Trip Odometer and Trip Computer
- Power Rear Windows- Rear Folding Seat- Cruise Control w/Steering Wheel Controls
- Manual Air Conditioning- HVAC -inc: Underseat Ducts- Glove Box
- Interior Trim -inc: Deluxe Sound Insulation- Full Cloth Headliner
- Urethane Gear Shifter Material- HD Vinyl 40/20/40 Split Bench Seat
- Base Door Trim Panel- Day-Night Rearview Mirror- Passenger Visor Vanity Mirror
- 2 12V DC Power Outlets- Fade-To-Off Interior Lighting- Full Vinyl/Rubber Floor Covering
- Storage Tray- Mini Floor Console
- Instrument Panel Bin, Dashboard Storage, Driver / Passenger And Rear Door Bins
- Delayed Accessory Power
- Power 1st Row Windows w/Driver And Passenger 1-Touch Up/Down
- Power Door Locks w/Autolock Feature- Systems Monitor
- Redundant Digital Speedometer- Trip Computer- Analog Display
- Seats w/Vinyl Back Material- Armrests w/Storage
- Manual Adjustable Front Head Restraints and Manual Adjustable Rear Head Restraints
- 40/20/40 Split Bench Seat- Manual Adjust Seats- Sentry Key Engine Immobilizer

Mechanical

- Mechanical Limited Slip Differential- Uppfitter Switches
- 4-Wheel Disc Brakes w/4-Wheel ABS, Front And Rear Vented Discs
- Leaf Rear Suspension w/Leaf Springs- Multi-Link Front Suspension w/Coil Springs
- Auto Locking Hubs- Single Stainless Steel Exhaust- 52 Gal. Fuel Tank
- Hydraulic Power-Assist Steering- Front Anti-Roll Bar and Rear HD Anti-Roll Bar
- HD Shock Absorbers- 6600# Maximum Payload- Trailer Wiring Harness
- Towing Equipment -inc: Trailer Sway Control- 102 mph Maximum Speed
- 180 Amp Alternator- 730CCA Maintenance-Free Battery w/Run Down Protection
- Part-Time Four-Wheel Drive- Manual Transfer Case
- Transmission w/Driver Selectable Mode, Sequential Shift Control and Oil Cooler
- 50 State Emissions- GVWR: 13,500 lbs- 4.10 Axle Ratio
- Transmission: 6-Speed Automatic 66RFE- Engine: 6.4L V8 Heavy Duty HEMI

Option Packages

Factory Installed Packages

ENGINE: 6.7L I6 CUMMINS TURBO DIESEL

-inc: Selective Catalytic Reduction (Urea), Cummins Turbo Diesel Badge, Tow Hooks, Current Generation Engine Controller, Smart Diesel Exhaust Brake, RAM Active Air, 3.73 Axle Ratio, GVWR: 14,000 lbs

Option Packages Total
\$7,345

T & B AUTO SALES



workvansandtrucks.com

501-847-2727

25637 I-30

Bryant, AR 72022

© 2023 AutoRevo - All rights reserved. - Powered by AutoRevo