

2018 Ford Transit Connect Van XL

View this car on our website at workvansandtrucks.com/6832794/ebrochure

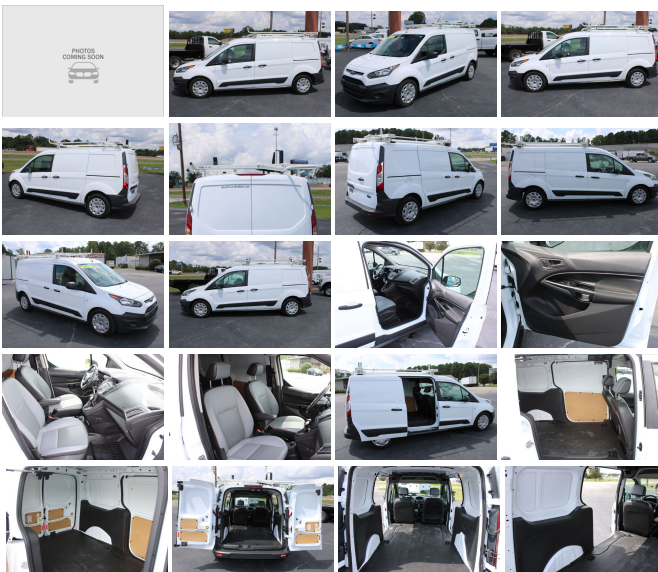


Our Price **\$0**

Retail Value **\$21,350**

Specifications:

Year:	2018
VIN:	NM0LS7E73J1355839
Make:	Ford
Stock:	C2530
Model/Trim:	Transit Connect Van XL
Condition:	Pre-Owned
Body:	Minivan/Van
Exterior:	Silver Metallic
Engine:	ENGINE: 2.5L DURATEC I4
Mileage:	48,482
Drivetrain:	Front Wheel Drive
Economy:	City 20 / Highway 27



2018 FORD TRANSIT CONNECT XL LWB CARGO VAN 2.5 4cyl GAS ENGINE, AUTOMATIC TRANSMISSION.

This smaller Cargo Van comes With Dual Sliding Side Doors for easy access, Power Windows, Power Door Locks, Power Mirrors, Tilt Steering Wheel, Key-Fob, Backup Camera, am, fm, xm, cd, radio, Vinyl Floor, Vinyl Seats, Open Cargo Area, Rubber Cargo Mat, Cargo Tie Downs, Weather Tech Floor Mats,

Swing Down Ladder Rack.

Current Oil and Filter Service.

Our Location :



2018 Ford Transit Connect Van XL

T & B Auto Sales - 501-847-2727 - View this car on our website at workvansandtrucks.com/6832794/ebrochure

Installed Options

Interior

- Driver Seat- Passenger Seat- Manual Tilt/Telescoping Steering Column
- Gauges -inc: Speedometer, Odometer, Engine Coolant Temp, Tachometer and Trip Odometer
- Front Cupholder
- Remote Keyless Entry w/Integrated Key Transmitter and Illuminated Entry
- Manual Air Conditioning- Glove Box- Driver Foot Rest- Front Cloth Headliner
- Cloth Door Trim Insert- Urethane Gear Shifter Material
- Vinyl Front Bucket Seats -inc: driver and passenger manual 4-way adjustment (fore/aft, lever recline) w/passenger fold-flat back
- Full Floor Console w/Storage, Full Overhead Console w/Storage and 1 12V DC Power Outlet
- Delay Off Interior Lighting- Front Only Vinyl/Rubber Floor Covering
- Vinyl/Rubber Floor Trim- Cargo Space Lights- Driver And Passenger Door Bins
- Power 1st Row Windows w/Driver 1-Touch Down- Delayed Accessory Power
- Power Door Locks w/Autolock Feature- Redundant Digital Speedometer
- Outside Temp Gauge- Analog Display- Seats w/Vinyl Back Material
- Manual Adjustable Front Head Restraints- Front Center Armrest w/Storage
- Securilock Anti-Theft Ignition (pats) Engine Immobilizer- 1 12V DC Power Outlet

Exterior

- Wheels: 16" Steel w/XL Full Wheel Covers
- Tires: P215/55R16 97H XL AS -inc: full-size spare- 6.5" Wheels- Steel Spare Wheel
- Spare Tire Stored Underbody w/Crankdown- Clearcoat Paint- Gray Front Bumper
- Gray Rear Bumper- Gray Bodyside Moldings
- Black Side Windows Trim and Black Front Windshield Trim - Black Door Handles
- Black Manual Side Mirrors w/Convex Spotter and Manual Folding
- Variable Intermittent Wipers- Fully Galvanized Steel Panels- Gray Grille
- Sliding Rear Doors- Split Swing-Out Rear Cargo Access
- Tailgate/Power Door Locks Included w/Power Door Locks

- Tailgate/Rear Door Lock included w/Power Door Locks
- Aero-Composite Halogen Headlamps- Perimeter/Approach Lights

Safety

- Driver Seat- Passenger Seat- Manual Tilt/Telescoping Steering Column
- Gauges -inc: Speedometer, Odometer, Engine Coolant Temp, Tachometer and Trip Odometer
- Front Cupholder
- Remote Keyless Entry w/Integrated Key Transmitter and Illuminated Entry
- Manual Air Conditioning- Glove Box- Driver Foot Rest- Front Cloth Headliner
- Cloth Door Trim Insert- Urethane Gear Shifter Material
- Vinyl Front Bucket Seats -inc: driver and passenger manual 4-way adjustment (fore/aft, lever recline) w/passenger fold-flat back
- Full Floor Console w/Storage, Full Overhead Console w/Storage and 1 12V DC Power Outlet
- Delay Off Interior Lighting- Front Only Vinyl/Rubber Floor Covering
- Vinyl/Rubber Floor Trim- Cargo Space Lights- Driver And Passenger Door Bins
- Power 1st Row Windows w/Driver 1-Touch Down- Delayed Accessory Power
- Power Door Locks w/Autolock Feature- Redundant Digital Speedometer
- Outside Temp Gauge- Analog Display- Seats w/Vinyl Back Material
- Manual Adjustable Front Head Restraints- Front Center Armrest w/Storage
- Securilock Anti-Theft Ignition (pats) Engine Immobilizer- 1 12V DC Power Outlet

Mechanical

- Engine: 2.5L Duratec I4 -inc: Flexible Fuel Vehicle (FFV) system is standard equipment for vehicles shipped to Federal Emissions States or Cross Border State dealers and is only available w/a Federal emissions system (FFV system not available w/code 425 and requires code 936 or 423 if applicable for California Emissions State dealer destinations)
- Transmission: 6-Speed SelectShift Automatic- 3.21 Axle Ratio- GVWR: 5,270 lbs
- Transmission w/SelectShift Sequential Shift Control- Front-Wheel Drive
- 60-Amp/Hr 590CCA Maintenance-Free Battery w/Run Down Protection
- 175 Amp Alternator- 1610# Maximum Payload- Gas-Pressurized Shock Absorbers
- Front And Rear Anti-Roll Bars- Electric Power-Assist Steering- 15.8 Gal. Fuel Tank
- Single Stainless Steel Exhaust- Strut Front Suspension w/Coil Springs
- Torsion Beam Rear Suspension w/Coil Springs
- 4-Wheel Disc Brakes w/4-Wheel ABS, Front Vented Discs, Brake Assist and Hill Hold Control

Option Packages

Factory Installed Packages

ENGINE: 2.5L DURATEC I4
 -inc: Flexible Fuel Vehicle (FFV) system is standard equipment for vehicles shipped to Federal Emissions States or Cross Border State dealers and is only available w/a Federal emissions system (FFV system not available w/code 425 and requires code 936 or 423 if applicable for California Emissions State dealer destinations)



workvansandtrucks.com

501-847-2727

25637 I-30

Bryant, AR 72022

