



2014 Jeep Wrangler Unlimited Rubicon X LIFTED, BUMPERS, FUEL WHLS, 87K

Our Price \$27,900

View this vehicle on our website at tveauto.com



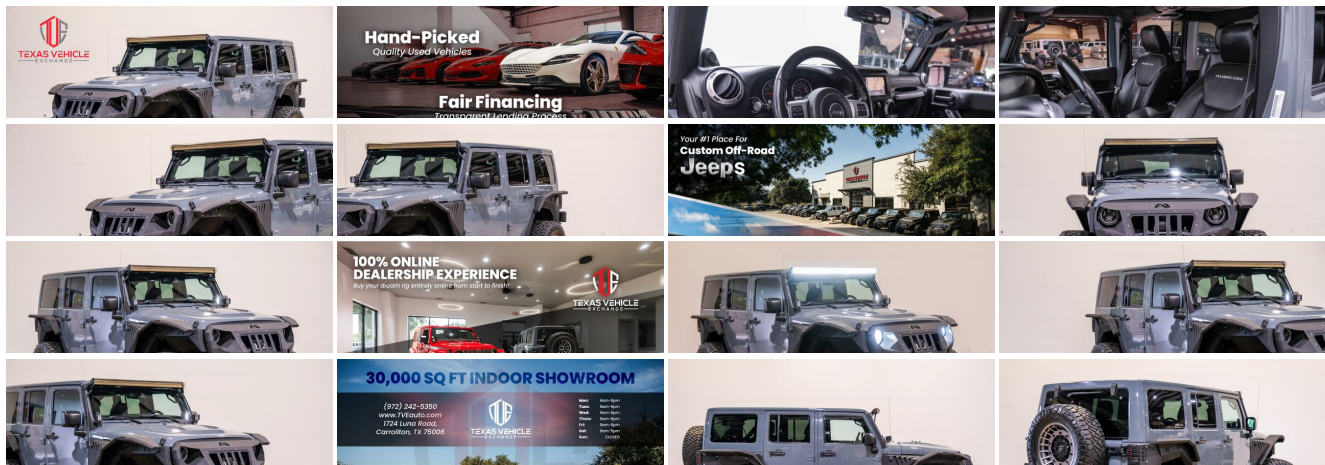
972-242-5350

1724 Luna Road , Carrollton, TX 75006

Photos

Details

Contact





Specifications:

Year:	2014
VIN:	1C4HJWFG2EL308140
Make:	Jeep
Stock:	308140
Model/Trim:	Wrangler Unlimited Rubicon X LIFTED,BUMPERS,FUEL WHLS,87K
Condition:	Pre-Owned
Body:	SUV
Exterior:	Anvil Clear Coat
Engine:	ENGINE: 3.6L V6 24V VVT
Interior:	Black Leather
Transmission:	TRANSMISSION: 5-SPEED AUTOMATIC (W5A580)
Mileage:	87,753
Drivetrain:	4 Wheel Drive
Economy:	City 16 / Highway 20

Vehicle Description

NATION WIDE FINANCING

SUBMIT CREDIT APP WWW.TVEAUTO.COM

OR CALL 972-242-5350

- * 2014 JEEP WRANGLER UNLIMITED RUBICON X 4X4
- * 3.6L V6 ENGINE
- * AUTOMATIC TRANSMISSION
- * ONLY 87,753 MILES
- * ANVIL CLEAR COAT W/BLACK LEATHER INTERIOR
- * CARFAX REPORTS 2 OWNERS NO ACCIDENTS
- * APPEARS TO BE A NON-SMOKER
- * REMOTE START
- * FACTORY NAVIGATION
- * APPROX 4" SUSPENSION LIFT KIT
- * FAB FOURS GRUMPER FRONT BUMPER
- * SMITTYBILT GEN II "X20" 10,000 LB WATERPROOF AND WIRELESS CONTROL WINCH WITH SYNTHETIC ROPE
- * FACTOR 55 PROLINK (BLACK)

- * EVOLUTION 2 LED HEADLIGHTS
- * FAB FOURS JK FRONT FENDER SYSTEM
- * 50" LED LIGHT BAR AND 2 RIGID INDUSTRIES DUALY D2 LED PILLAR LIGHTS
- * PAINTED TO MATCH 3 PIECE HARD TOP
- * SMITTYBILT XRC SIDE ARMOR STEPS
- * POWER WINDOWS
- * POWER DOOR LOCKS
- * POWER HEATED MIRRORS
- * TILT STEERING WHEEL WITH AUDIO & CRUISE CONTROLS
- * HEATED FRONT BUCKET SEATS WITH MANUAL ADJUSTMENTS
- * SWAY BAR CONTROL
- * AXLE LOCK CONTROL
- * TRACTION CONTROL
- * HILL DESCENT CONTROL
- * ICE COLD A/C
- * TOUCH SCREEN AM/FM/SIRIUS STEREO WITH CD PLAYER
- * U-CONNECT
- * SELF DIMMING REAR VIEW MIRROR
- * DUAL VANITY MIRRORS
- * FAB FOURS JK REAR FENDER SYSTEM
- * AFTERMARKET BLACK LED TAIL LIGHTS WITH RUGGED RIDGE BLACK GUARDS
- * SMITTYBILT PIVOT HD TIRE CARRIER
- * RUGGED RIDGE LED THIRD BRAKE LIGHT RING
- * SMITTYBILT XRC REAR BUMPER
- * REAR D-RINGS & ISOLATORS
- * MOPAR SLUSH FLOOR MATS
- * NO OWNER'S MANUAL
- * 1 KEYS/1 REMOTES
- * 20" FUEL MILITIA WHEELS
- * FRONT TIRES ARE BRAND NEW NITTO RIDGE GRAPPLER 37X13.50R/20
- * REAR TIRES ARE BRAND NEW NITTO RIDGE GRAPPLER 37X13.50R/20

* RUNS AND DRIVES GREAT.

* GIVE US A CALL @ 972-242-5350 OR STOP BY FOR A TEST DRIVE.

* 1724 LUNA RD IN CARROLLTON - 2 MILES NORTH OF 635.

* PLEASE CONTACT TO VIEW A FULL CARFAX REPORT AT NO COST TO YOU.

Installed Options

Interior

- Gauges -inc: Speedometer, Odometer, Engine Coolant Temp, Tachometer, Trip Odometer and Trip Computer
- Manual Air Conditioning
- Power 1st Row Windows w/Driver And Passenger 1-Touch Down
- Power Door Locks w/Autolock Feature
- Power Rear Windows and Removable 3rd Row Windows
- Remote Keyless Entry w/Integrated Key Transmitter, Illuminated Entry and Panic Button
- Trip Computer- 2 12V DC Power Outlets
- 2 12V DC Power Outlets and 1 AC Power Outlet - 2 Seatback Storage Pockets
- 4-Way Passenger Seat -inc: Manual Recline and Fore/Aft Movement
- 6-Way Driver Seat -inc: Manual Recline, Height Adjustment and Fore/Aft Movement
- 60-40 Folding Split-Bench Front Facing Fold Forward Seatback Rear Seat
- Analog Display- Carpet Floor Trim, Carpet And Rubber Mat- Compass
- Cruise Control w/Steering Wheel Controls- Day-Night Auto-Dimming Rearview Mirror
- Delayed Accessory Power- Driver And Passenger Visor Vanity Mirrors
- Fade-To-Off Interior Lighting- Front Center Armrest w/Storage- Front Cupholder
- Front Map Lights- Full Carpet Floor Covering
- Full Floor Console w/Locking Storage, 2 12V DC Power Outlets and 1 AC Power Outlet
- Instrument Panel Bin, Dashboard Storage, Driver And Passenger Door Bins
- Interior Trim -inc: Deluxe Sound Insulation - Leather Steering Wheel- Locking Glove Box
- MOPAR Slush Mats
- Manual Adjustable Front Head Restraints and Fixed Rear Head Restraints
- Manual Tilt Steering Column- Outside Temp Gauge- Perimeter Alarm- Rear Cupholder
- Sentry Key Engine Immobilizer

Exterior

- Premium Black Sunrider Soft Top- Sunrider Soft Top
- Tailgate/Rear Door Lock Included w/Power Door Locks- Aluminum Spare Wheel
- Black Door Handles- Black Fender Flares
- Black Power Heated Side Mirrors w/Manual Folding- Black Side Windows Trim
- Body-Colored Grille- Clearcoat Paint- Conventional Rear Cargo Access
- Convertible w/Fixed Roll-Over Protection- Deep Tinted Glass- Front Fog Lamps
- Full-Size Spare Tire Mounted Outside Rear
- Fully Automatic Aero-Composite Halogen Headlamps- Fully Galvanized Steel Panels
- MOPAR Jeep Trail Rated Kit- Removable Rear Window
- Tires: LT255/75R17 BSW Off Road -inc: BF Goodrich Brand Tires
- Variable Intermittent Wipers- Wheels: 17" x 7.5" Polished Semi-Gloss Black

Safety

- Gauges -inc: Speedometer, Odometer, Engine Coolant Temp, Tachometer, Trip Odometer and Trip Computer
- Manual Air Conditioning
- Power 1st Row Windows w/Driver And Passenger 1-Touch Down
- Power Door Locks w/Autolock Feature
- Power Rear Windows and Removable 3rd Row Windows
- Remote Keyless Entry w/Integrated Key Transmitter, Illuminated Entry and Panic Button
- Trip Computer- 2 12V DC Power Outlets
- 2 12V DC Power Outlets and 1 AC Power Outlet - 2 Seatback Storage Pockets
- 4-Way Passenger Seat -inc: Manual Recline and Fore/Aft Movement
- 6-Way Driver Seat -inc: Manual Recline, Height Adjustment and Fore/Aft Movement
- 60-40 Folding Split-Bench Front Facing Fold Forward Seatback Rear Seat
- Analog Display- Carpet Floor Trim, Carpet And Rubber Mat- Compass
- Cruise Control w/Steering Wheel Controls- Day-Night Auto-Dimming Rearview Mirror
- Delayed Accessory Power- Driver And Passenger Visor Vanity Mirrors
- Fade-To-Off Interior Lighting- Front Center Armrest w/Storage- Front Cupholder
- Front Map Lights- Full Carpet Floor Covering

Option Packages

Factory Installed Packages

ENGINE: 3.6L V6 24V VVT

TRANSMISSION: 5-SPEED AUTOMATIC (W5A580)
-inc: Tip Start, Hill Descent Control \$1,300

AIR CONDITIONING W/AUTO TEMP CONTROL
-inc: Air Filtering \$395

BODY COLOR 3-PIECE HARD TOP
-inc: If ordering without AEM (Dual Top Group), the black soft top will not be included, Freedom Panel Storage Bag, Rear Window Defroster, Rear Window Wiper/Washer, Delete Sunrider Soft Top \$1,495

RADIO: UCONNECT 730N CD/DVD/MP3/HDD/NAV
-inc: SIRIUSXM Traffic, 1-Year SIRIUSXM Traffic Service, 1-Year SIRIUSXM Travel Link Service, Remote USB Port, Integrated Voice Command w/Bluetooth, 40GB Hard Drive w/20GB Available, SiriusXM Travel Link, Uconnect Voice Command w/Bluetooth \$1,570

REMOTE START SYSTEM \$495

SUPPLEMENTAL FRONT SEAT SIDE AIR BAGS \$495

QUICK ORDER PACKAGE 24J RUBICON X
-inc: Engine: 3.6L V6 24V VVT, Transmission: 5-Speed Automatic (W5A580), Steel Front Bumper, Silver Interior Accents, Vehicle Information Center, Remote USB Port, Uconnect Voice Command w/Bluetooth, Tire Pressure Monitoring Display, Low Gloss Black Wrangler Decal, Chrome/Leather Wrapped Shift Knob, Rubicon X, MOPAR Rock Rails, Premium EVIC Message Center, Rubicon Hood Decal, Hood w/Power Dome, Red Trail Rated Badge, Red Front & Rear Tow Hooks, Black Fuel Filler Door, Steel Rear Bumper, Black/Chrome Screws Fuel Filler Door \$4,300

ANVIL CLEAR COAT

BLACK, LEATHER TRIMMED BUCKET SEATS
-inc: Front Seat Back Map Pockets, Driver Height Adjuster Seat, Heated Front Seats

Option Packages Total \$10,050

From Map Sign: Full Carpet Floor Covering

- Full Floor Console w/Locking Storage, 2 12V DC Power Outlets and 1 AC Power Outlet
- Instrument Panel Bin, Dashboard Storage, Driver And Passenger Door Bins
- Interior Trim -inc: Deluxe Sound Insulation- Leather Steering Wheel- Locking Glove Box
- MOPAR Slush Mats
- Manual Adjustable Front Head Restraints and Fixed Rear Head Restraints
- Manual Tilt Steering Column- Outside Temp Gauge- Perimeter Alarm- Rear Cupholder
- Sentry Key Engine Immobilizer

Mechanical

- Brake Actuated Limited Slip Differential- Driver Selectable Front Locking Differential
- Driver Selectable Rear Locking Differential- Transmission: 6-Speed Manual (NSG370)
- 160 Amp Alternator- 22.5 Gal. Fuel Tank- 3.73 Rear Axle Ratio
- 4-Wheel Disc Brakes w/4-Wheel ABS, Front And Rear Vented Discs, Brake Assist and Hill Hold Control
- 600CCA Maintenance-Free Battery- 892# Maximum Payload- Auto Locking Hubs
- Engine Oil Cooler- Engine: 3.6L V6 24V VVT
- Front Active w/Driver Control Anti-Roll Bar and Rear Anti-Roll Bar- GVWR: 5,700 lbs
- HD Shock Absorbers- Hydraulic Power-Assist Steering
- Leading Link Front Suspension w/Coil Springs- Manual Transfer Case
- Part-Time Four-Wheel Drive- Performance Suspension- Single Stainless Steel Exhaust
- Towing Equipment -inc: Trailer Sway Control
- Trailing Arm Rear Suspension w/Coil Springs

Texas Vehicle Exchange

Texas Vehicle Exchange

View this car on our website at tveauto.com/6832703

Website: tveauto.com

Phone: [972-242-5350](tel:972-242-5350)

Map: [1724 Luna Road, Carrollton, TX 75006](#)

