



2008 TOYOTA PRIUS HATCHBACK 74K MLS NEW TIRES SERVICE RECORDS

Contact Sales 310-987-1212

Our Price \$6,990

Retail Value \$9,790

View this vehicle on our website at boutiqueautosales.com

Boutique Auto Sales

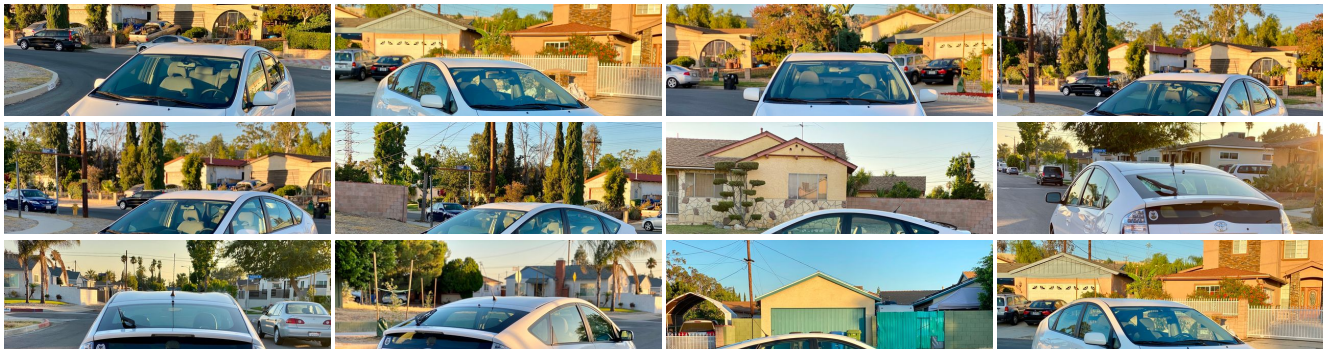
[310-987-1212](tel:310-987-1212)

5950 Laurel Canyon Blvd, North Hollywood, CA 91607

Photos

Details

Contact





Specifications:

Year:	2008
VIN:	JTDKB20U683373149
Make:	TOYOTA
Stock:	3149
Model/Trim:	PRIUS HATCHBACK 74K MLS NEW TIRES SERVICE RECORDS
Condition:	Pre-Owned
Body:	Sedan
Exterior:	Super White
Engine:	1.5L DOHC EFI VVT-i 16-valve 4-cyl engine
Interior:	Bisque Cloth
Mileage:	74,398
Drivetrain:	Front Wheel Drive
Economy:	City 48 / Highway 45

Vehicle Description

Installed Options

Interior

- (2) 12V auxiliary pwr outlets- (4) retractable front & rear passenger assist grips
- 4-way adjustable cloth front bucket seats w/adjustable headrests
- AM/FM stereo radio w/CD player-inc: (6) speakers
- Auto climate control-inc: humidity sensor, air filtration
- Cargo area side panel & under floor storage
- Center console armrest w/storage area & dual front/rear cup holders
- Central instrument display-inc: digital speedometer, fuel gauge, shift position indicator, odometer, twin tripmeters, warning lights
- Cloth 60/40 split fold-down rear bench seat w/fold-down center armrest & adjustable headrests for all seating positions
- Cruise control- Digital quartz clock- Direct tire pressure monitoring system
- Dual compartment glove box- Dual illuminated sun visors- Engine immobilizer
- Fabric-trimmed door panels w/storage pockets, bottle holders- Front & rear dome lights
- Front seatback pockets- HD electric rear window defroster w/timer
- Multi-information LCD-inc: energy monitoring, exterior temp, fuel consumption, climate control, audio status modes
- Overhead console w/maplights- Pwr door locks w/anti-lockout feature
- Pwr windows w/driver-side auto up/down & retained pwr feature
- Remote hood/fuel-filler door releases
- Remote keyless entry system w/2-stage unlocking, panic function, remote illuminated entry
- Tilt steering wheel w/audio/climate/telephone controls- Tonneau cover

Exterior

- Chrome-finish grille- Color-keyed door handles- Color-keyed front/rear bumpers
- Dual heated color-keyed pwr mirrors- HID headlamps w/integrated fog lamps
- High solar energy-absorbing glass (HSEA)- Intermittent rear window wiper
- Larger rear deck spoiler- Variable intermittent windshield wipers

Safety

- (2) 12V auxiliary pwr outlets- (4) retractable front & rear passenger assist grips

Option Packages

Factory Installed Packages

50 STATE EMISSIONS

PKG 2

-inc: vehicle skid control, rearview back-up camera, AM/FM stereo w/CD player, MP3 playback, (6) speakers, Smart Key system

5-PIECE CARPET FLOOR/TRUNK MAT SET

\$199

ALL-WEATHER FLOOR MATS

\$100

ALLOY WHEEL LOCKS

\$67

FIRST AID KIT

\$29

PREFERRED ACCESSORY PKG

-inc: 5-piece carpet floor/trunk mat set, cargo net, first aid kit

SIRIUS SATELLITE RADIO

\$449

V.I.P SECURITY UPGRADE

\$359

- 4-way adjustable cloth front bucket seats w/adjustable headrests
- AM/FM stereo radio w/CD player-inc: (6) speakers
- Auto climate control-inc: humidity sensor, air filtration
- Cargo area side panel & under floor storage
- Center console armrest w/storage area & dual front/rear cup holders
- Central instrument display-inc: digital speedometer, fuel gauge, shift position indicator, odometer, twin tripmeters, warning lights
- Cloth 60/40 split fold-down rear bench seat w/fold-down center armrest & adjustable headrests for all seating positions
- Cruise control- Digital quartz clock- Direct tire pressure monitoring system
- Dual compartment glove box- Dual illuminated sun visors- Engine immobilizer
- Fabric-trimmed door panels w/storage pockets, bottle holders - Front & rear dome lights
- Front seatback pockets- HD electric rear window defroster w/timer
- Multi-information LCD-inc: energy monitoring, exterior temp, fuel consumption, climate control, audio status modes
- Overhead console w/maplights- Pwr door locks w/anti-lockout feature
- Pwr windows w/driver-side auto up/down & retained pwr feature
- Remote hood/fuel-filler door releases
- Remote keyless entry system w/2-stage unlocking, panic function, remote illuminated entry
- Tilt steering wheel w/audio/climate/telephone controls- Tonneau cover

Mechanical

- 1.5L DOHC EFI VVT-i 16-valve 4-cyl engine - 16" x 6" 7-spoke alloy wheels
- 4-wheel anti-lock braking system (ABS)- Continuously variable transmission (ECVT)
- Electric-assist pwr rack & pinion steering
- Electronic throttle control system w/intelligence (ETCS-i)- Front wheel drive
- Hybrid system-inc: sealed nickel-metal hydride battery, integrated permanent AC synchronous electric motor, integrated regenerative brake system
- Independent MacPherson strut front suspension w/tuned stabilizer bar
- P195/55R16 tires- Push-button start
- Pwr ventilated front disc/rear drum brakes w/electronic brake distribution
- T125/70D16 compact spare tire
- Torsion beam rear suspension-inc: tuned shocks, tuned springs
- Traction control (TRAC)

V.I.P. GLASS BREAKAGE SENSOR	\$165
XM SATELLITE RADIO	\$449
Option Packages Total	\$2,671

Boutique Auto Sales

Boutique Auto Sales

View this car on our website at boutiqueautosales.com/6830412

Website: boutiqueautosales.com

Phone: 310-987-1212

Map: [5950 Laurel Canyon Blvd, North Hollywood, CA 91607](#)

