



2000 Chevrolet Corvette

Website Price \$16,995

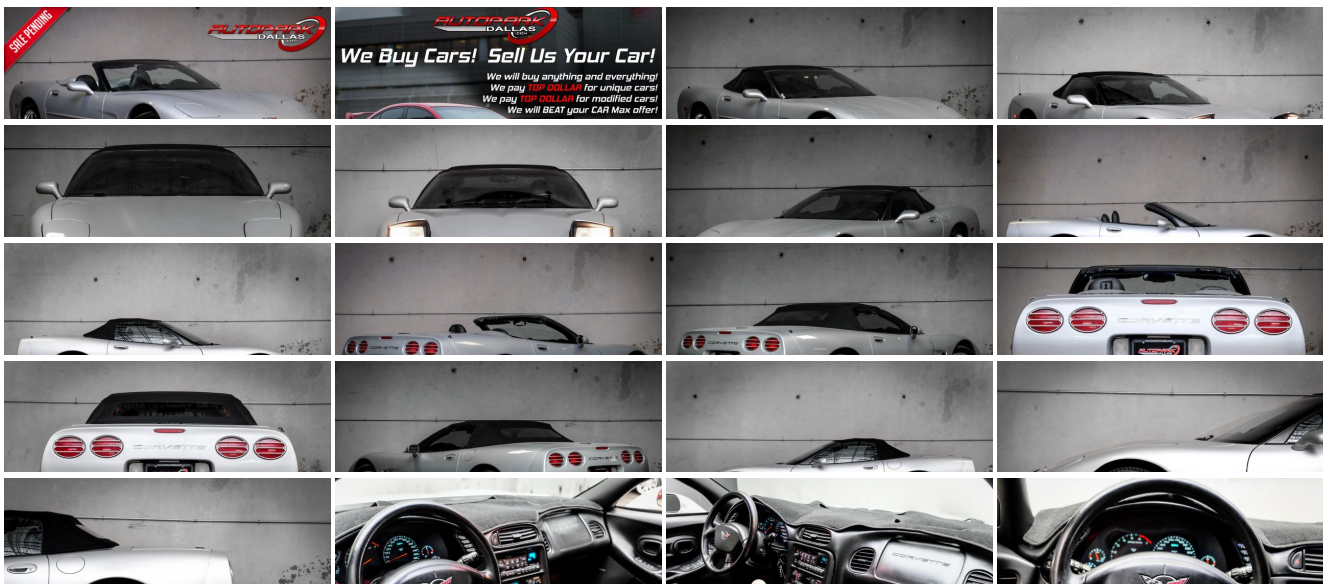
View this vehicle on our website at autoparkdallas.com



(214) 945-2601

2061 S Stemmons Fwy , Lewisville, TX 75067

- Photos
- Details
- Contact



Specifications:

Year:	2000
VIN:	1G1YY32G9Y5117770
Make:	Chevrolet
Model/Trim:	Corvette
Condition:	Pre-Owned
Body:	Convertible
Exterior:	Sebring Silver Metallic
Engine:	5.7L (346) SFI V8 ENGINE
Interior:	Black Leather
Transmission:	6-SPEED MANUAL TRANSMISSION W/5TH & 6TH GEAR OD
Mileage:	42,512
Drivetrain:	Rear Wheel Drive
Economy:	City 17 / Highway 25

Vehicle Description

AutoPark Dallas is thrilled to offer you this 2000 Chevrolet Corvette for sale! There is not a soul that does not know the Corvette, with its signature look and being a low-profile sport car. These bald eagle screaming U.S. born beauties are a thrill to drive and always stand out in any crowded car meet or parking lot. Our Corvette here at APD was handled with care as the condition of this Corvette is amazing from the exterior to the interior! This sundae has two cherries on top as it not only has very low miles for the age, but also the doors go UP!!! If you're looking for a beautiful American Sports Car, then come swing by to check out this Corvette parked in our indoor 16,000 Sq Ft Showroom located in Dallas , Texas amongst our inventory of 100+ other Performance / Modified and Luxury cars!

2000 Chevrolet Corvette

Sebring Silver Metallic Exterior

Black Soft-Top Convertible

Black Leather Interior

Active Handling System

Bose Premium Sound System

Powered Driver Seat

Single-Zone Air Conditioning

In-Dash CD Player

Cruise Control

Daytime Running Lights

5.7L SFI V8 Engine

6-Speed Manual Transmission

Rear Wheel Drive

Professionally Detailed!

Well Maintained!

*** Free CarFax Report !***

AND SO MUCH MORE!!!

Financing is available!

Check out our Payment Calculator to get an estimate on your monthly payments!

OR

Get pre-approved in no time by filling out a credit application on the 'Finance' section of our website!

We also offer MANY different Extended Warranty options!

Check out our Google Reviews by *Clicking* this LINK!

Referrals and Testimonials is what our business is built on!

The team here at AutoPark Dallas, is dedicated to offering a level of customer service not usually found in the automobile industry. Thanks to years of extensive car buying / selling experience, we pursue quality used and new vehicles that are hand-picked from factory sources. Our love for automobiles and dislike of traditional dealership tactics is what motivates us to provide the service we do! The pride we take in continuing this service long after the vehicle has been delivered is what we strive for! Looking forward to making every effort to see that our customer is completely satisfied and a friend for life!

Pre-purchase inspections are always welcomed!

We also offer airport pick-up, competitive financing options, free CarFax Reports, Car Shipping nationwide, Extended Warranty plans, and so much more!

Trade-In(s) are always accepted or sell us your used car (MODIFIED OR NOT)! Please call or text for more information about Trade-Ins or selling your car to us @ (214) 945-2601!

#(214) 945-2601

Call or Text *Anytime!*

Se habla Español

WE BUY CARS!

WWW.AUTOPARKDALLAS.COM

Installed Options

Interior

- 6-way pwr driver seat- Air conditioning- Bose speaker system
- Center console-inc: cup holder, ashtray, coin tray, cassette/CD storage
- Courtesy lighting-inc: cargo area, console, glovebox
- Day/night rearview mirror w/reading lamps- Dual illuminated covered visor mirrors
- ETR AM/FM stereo w/cassette-inc: seek-scan, digital clock
- Electronic speed control w/resume speed
- Electronic white analog gauges w/multi-language driver information center
- Leather bucket seats w/lateral support & back angle adjustment
- Leather-wrapped sport tilt steering wheel
- Lockable storage compartments-inc: console, glovebox, (3) rear compartments
- Low oil level warning light- Low tire pressure monitor
- PASS-Key II theft deterrent system w/alarm- Pwr antenna- Pwr door locks
- Pwr windows w/driver & passenger-side express down- Rear window defogger
- Remote keyless entry-inc: remote trunk release, panic alarm- Remote trunk release
- Side window defoggers- Underhood courtesy lamp

Option Packages

Factory Installed Packages

5.7L (346) SFI V8 ENGINE

6-SPEED MANUAL TRANSMISSION W/5TH & 6TH GEAR OD
-inc: 3.42 axle ratio **\$815**

6-WAY PWR PASSENGER SEAT **\$305**

ACTIVE HANDLING SYSTEM
-inc: automatic brake application for correcting oversteer/ understeer **\$500**

BODY-SIDE MOLDINGS **\$75**

Exterior

- Base coat/clear coat paint- Daytime running lamps
- Dual body-color pwr heated folding mirrors- Intermittent wipers
- Manual insulated convertible top w/heated glass back light
- Pwr operated retractable halogen headlamps- Solar-ray tinted glass

Safety

- 6-way pwr driver seat- Air conditioning- Bose speaker system
- Center console-inc: cup holder, ashtray, coin tray, cassette/CD storage
- Courtesy lighting-inc: cargo area, console, glovebox
- Day/night rearview mirror w/reading lamps- Dual illuminated covered visor mirrors
- ETR AM/FM stereo w/cassette-inc: seek-scan, digital clock
- Electronic speed control w/resume speed
- Electronic white analog gauges w/multi-language driver information center
- Leather bucket seats w/lateral support & back angle adjustment
- Leather-wrapped sport tilt steering wheel
- Lockable storage compartments-inc: console, glovebox, (3) rear compartments
- Low oil level warning light- Low tire pressure monitor
- PASS-Key II theft deterrent system w/alarm- Pwr antenna- Pwr door locks
- Pwr windows w/driver & passenger-side express down- Rear window defogger
- Remote keyless entry-inc: remote trunk release, panic alarm- Remote trunk release
- Side window defoggers- Underhood courtesy lamp

Mechanical

- 17" x 8.5" front 5-spoke aluminum wheels - 18" x 9.5" rear 5-spoke aluminum wheels
- 19.1 gallon fuel tank- 2.73 rear axle ratio
- 4-speed electronically-controlled automatic transmission w/OD
- 4-wheel anti-lock braking system
- 4-wheel double wishbone independent suspension w/transverse fiberglass leaf springs
- 5.7L (346) SFI V8 aluminum engine - Brake/transmission shift interlock
- Distributorless opti-spark ignition system- Dual lifetime stainless steel exhaust
- Limited slip differential- P245/45ZR17 extended mobility Eagle F-1 GS front tires
- P275/40ZR18 extended mobility Eagle F-1 GS rear tires - Pwr 4-wheel disc brakes
- Rear opening hood for easy engine access- Rear wheel drive
- Speed sensitive variable assist rack & pinion steering - Traction control
- Uniframe design body structure w/corrosion resistant coating

ELECTRONIC DUAL ZONE AIR CONDITIONING	\$365
FOG LAMPS	\$69
FRONT FLOOR MATS	\$25
FRONT LICENSE PLATE FRAME	\$15
HEADS-UP DISPLAY	\$375
MEMORY PKG -inc: memory of outside rearview mirror positions, radio/HVAC/pwr driver seat settings, pwr telescoping steering wheel	\$150
PERFORMANCE HANDLING PKG -inc: stiffer springs & stabilizer bars	\$350
PWR TELESCOPIC STEERING COLUMN	\$350
TWILIGHT SENTINEL	\$60
FEDERAL EMISSION EQUIPMENT	
SOLID PAINT	
PREFERRED EQUIPMENT GROUP -inc: base vehicle	
ETR AM/FM STEREO W/COMPACT DISC, AUTO TONE CONTROL -inc: seek-scan, digital clock, theft lock, speed compensated volume, Delco/Bose music system	\$100
LEATHER SEAT TRIM	
BUCKET SEATS	
HIGH POLISHED ALUMINUM WHEELS	\$895
Option Packages Total	\$4,449

AUTOPARK

Dallas

Auto Park Dallas

View this car on our website at autoparkdallas.com/6830274

Website: autoparkdallas.com

Phone: (214) 945-2601

Map: 2061 S Stemmons Fwy, Lewisville, TX 75067

