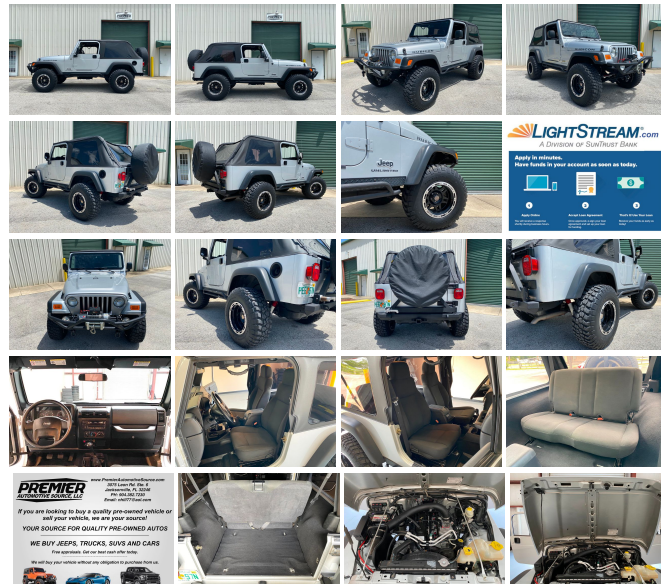


3075 Leon Rd
Jacksonville , FL 32246

2006 Jeep Wrangler Unlimited Rubicon LWB

Nolan Hill

View this car on our website at premierautomotivesource.com/6829689/ebrochure



Our Price **\$0**

Specifications:

Year:	2006
VIN:	1J4FA64S86P750052
Make:	Jeep
Model/Trim:	Wrangler Unlimited Rubicon LWB
Condition:	Pre-Owned
Body:	SUV
Exterior:	Bright Silver Metallic
Engine:	4.0L SMPI I6 "POWER TECH" ENGINE
Interior:	Dark Slate Gray Cloth
Transmission:	6-SPEED MANUAL TRANSMISSION
Mileage:	62,700
Drivetrain:	4 Wheel Drive
Economy:	City 14 / Highway 18

2006 JEEP WRANGLER RUBICON UNLIMITED LJ

- 4.0 INLINE 6 CYL ENGINE -
- 6 SPEED MANUAL TRANSMISSION -
- FACTORY DANA 44'S FRONT & REAR -
- FACTORY 4.10 GEARS -
- FACTORY LOCKERS -
- SOFT TOP -
- 4" SUSPENSION LIFT -
- ADJUSTABLE FRONT TRACK BAR -
- 305/70/16 BFG KM2 TIRES -
- BLACK ION ALLOY WHEELS -
- 8500LB WINCH -

CDC CUSTOM BUMPER FRONT & REAR

- SRC CUSTOM BUMPERS FRONT & REAR -

- SWING OUT REAR TIRE CARRIER -

- ROCK RAILS -

- WE TAKE TRADE-INS -

- WE SELL & SHIP WORLDWIDE -

- CLEAN CARFAX HISTORY REPORT -

**FOR FINANCING WE
RECOMMEND <http://LIGHTSTREAM.COM>**

CALL NOLAN @ 904-382-7230

Lifted 2006 Jeep Wrangler Rubicon Unlimited,
GREAT CONDITION AND ONLY 62,700 miles.

Bright silver, Black interior, Soft Top, Factory
DANA 44s, Factory 4:10 gears, Factory Locking
Differentials, Factory 4 wheel disc brakes, and

Tow package. Thousands recently spent
on parts for this LJ Rubicon. Including a 4"

Suspension lift, heavy duty adjustable
front track bar, 305/70/16 BFG KM2 tires

on black ION alloy wheels, 8,500lb
winch, SRC front and rear bumpers and spare
tire swing out carrier, Cold A/C, 4.0L inline six
cylinder with a 6 speed manual transmission.

This Jeep Runs, drives, and looks great. The
underside of this rare LJ Rubicon is very clean.

Sale includes a free Carfax report, 2 keys,
owners manual, winch controller, and
front mats.

Call Nolan: 904-382-7230. ALL INVENTORY
IS STORED INDOORS AND SHOWN BY
APPOINTMENT. Trades accepted. Extended
warranties available. All applicable sales tax,
title, registration and a \$299 document fees
apply.

Also check us out at:

http://www.instagram.com/nolan_premieraautosource/

<https://www.facebook.com/premieraautosource/>

<http://youtube.com/premieraautosource/>

#PREMIERAUTOSOURCE

#PREMIERJEEPSOURCE

2006 Jeep Wrangler Unlimited Rubicon LWB

Premier Automotive Source LLC - - View this car on our website at premierautomotivesource.com/6829689/ebrochure

Our Location :



2006 Jeep Wrangler Unlimited Rubicon LWB

Premier Automotive Source LLC - - View this car on our website at premierautomotivesource.com/6829689/ebrochure

Installed Options

Interior

- AM/FM stereo w/CD player-inc: changer control
- Cloth reclining high-back front bucket seats - (7) speakers w/subwoofer- Air conditioning
- Aux 12-volt pwr outlet- Black diamond plate sill guards- Cargo tie down loops
- Courtesy/underhood lamps- Easy access tip/slide driver seat
- Easy access tip/slide passenger seat- Fixed long mast antenna- Folding rear seat
- Front/rear seat, wheelhouse, cargo area carpeting- Full length floor console
- Glove box w/lock- Sirius satellite radio-inc: 1-year service- Sport bar w/full padding
- Tilt steering column

Exterior

- Variable intermittent windshield wipers- Bumper extensions- Deep tint sunscreen glass
- Easy folding soft top- Fog lamps- Fold away mirrors- Front door light tinted windows
- Premium fender flares- Sunrider soft top

Safety

- AM/FM stereo w/CD player-inc: changer control
- Cloth reclining high-back front bucket seats - (7) speakers w/subwoofer- Air conditioning
- Aux 12-volt pwr outlet- Black diamond plate sill guards- Cargo tie down loops
- Courtesy/underhood lamps- Easy access tip/slide driver seat
- Easy access tip/slide passenger seat- Fixed long mast antenna- Folding rear seat
- Front/rear seat, wheelhouse, cargo area carpeting- Full length floor console
- Glove box w/lock- Sirius satellite radio-inc: 1-year service- Sport bar w/full padding
- Tilt steering column

Mechanical

- (2) front/(1) rear tow hooks- (5) 16" x 8.0" "Moab" aluminum wheels - 117-amp alternator
- 19 gallon fuel tank- 4-wheel pwr disc brakes- 4.0L SMPI I6 "Power Tech" engine
- 4.11 axle ratio- 4750# GVWR- 4:1 Rocktrac HD part-time 4WD system
- 6-speed manual transmission- 600-CCA maintenance free battery- Front stabilizer bar
- Full size spare tire w/outside carrier- HD Dana 44 front axle- HD Dana 44 rear axle
- High pressure gas-charged shock absorbers- LT245/75R16 on/off road BSW tires
- Next generation engine controller- Pwr recirculating ball steering
- Skid plates-inc: transfer case, fuel tank- Tru-lok front/rear differential

Option Packages

Factory Installed Packages

4.0L SMPI I6 "POWER TECH" ENGINE

6-SPEED MANUAL TRANSMISSION

EASY-FOLDING SOFT TOP

DEALER POLICIES: Please review all photos carefully and ask questions prior to making an offer if there is anything you are not sure about. We welcome pre-sale inspections. Any descriptions we make of vehicles shall not be construed as any type of warranty. Our pictures are as thorough and precise as we can make them. Please be advised that this is not a brand new vehicle. It is a pre-owned vehicle and has previously been driven, so therefore with respect to the miles there will most likely be average wear and tear, such as minor scratches, minor dings, or small rock chips. We do our best to disclose any substantial blemishes in our photos and descriptions. If our vehicles include manuals, service records or extra sets of keys, it will be shown in the pictures and noted in the description. The advertised mileage is a round number and may vary slightly from the exact mileage due to demo and test drives. Once a vehicle leaves our premises, no refunds, credits, or adjustments, will be issued. All Vehicles are conveyed AS-IS. Dealer neither makes nor implies any warranty on this or any vehicle. Any dispute that may arise shall take place under the laws of the state of Florida, in the state of Florida and all sales are subject to binding Arbitration under the rules of the American Arbitration Association. All applicable sales tax, tag and title fees apply. When we receive a vehicle into our inventory, sometimes the title is being held by a bank or lender as collateral for the previous loan or payoff. Occasionally there is a delay in receiving the title from these lending institutions after payoff of the loan for up to two weeks. While we usually have the titles in our possession, there are instances where we may be waiting for the title to arrive. We guarantee clean titles on our vehicles unless otherwise noted. In some cases we may hold titles until cashiers checks or other funds are cleared or unless other arrangements were agreed upon. Titles will be sent via Fedex for proper tracking. Thank you for your patience and understanding.

Premier Automotive Source LLC

premierautomotivesource.com

3075 Leon Rd

Jacksonville , FL 32246

© 2024 AutoRevo - All rights reserved. - **Powered by AutoRevo**