



# 2019 Ford E-Series Cutaway E450 SUPER DUTY CUTAWAY VAN

View this car on our website at [workvansandtrucks.com/6827005/ebrochure](http://workvansandtrucks.com/6827005/ebrochure)



Our Price **\$0**

Retail Value **\$34,995**

## Specifications:

<b>Year:</b>	2019
<b>VIN:</b>	1FDWE4F6XKDC49542
<b>Make:</b>	Ford
<b>Stock:</b>	B2512
<b>Model/Trim:</b>	E-Series Cutaway E450 SUPER DUTY CUTAWAY VAN
<b>Condition:</b>	Pre-Owned
<b>Exterior:</b>	WHITE
<b>Interior:</b>	GRAY
<b>Mileage:</b>	11,624
<b>Drivetrain:</b>	Rear Wheel Drive

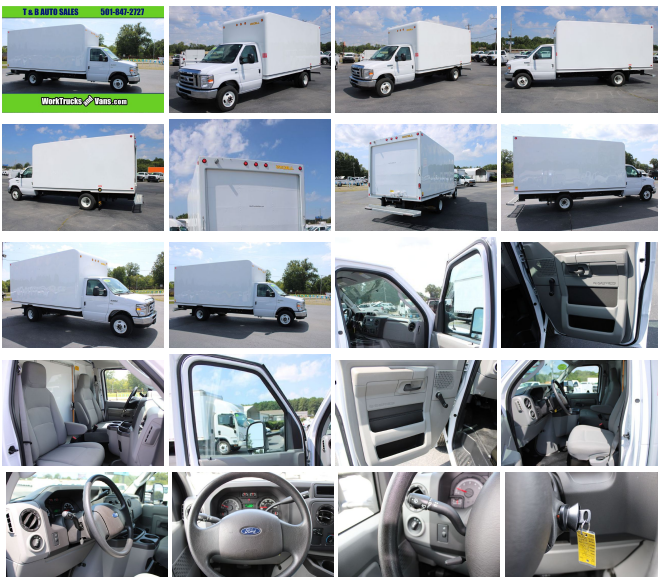
2019 FORD E450 ECONOLINE XL CUTAWAY BOX TRUCK 6.2 GAS ENGINE, AUTOMATIC TRANSMISSION.

This 1 1/4 Box truck comes with Manual Windows, Manual Door Locks, Manual Mirrors, Tow Mirrors, Tilt Steering Wheel, Tow Haul Mode, am/fm/radio, 12 Volt charging ports, Arm Rest on Both Seats, Pass Through Door.

Unicell Box comes with Rollup Rear door, Aluminum Walk/Load Ramp, Tie Down Slats on The Side Walls, Led Cargo Light, Led Taillights, Galvanized Bumper, Anodized Aluminum Rub Rail, Leak-proof integral skylight.

Box from the head wall to the back door is 15 foot 10 inches, Width 7 Foot 6 inch

Current Oil and Filter Service.



**Our Location :**



2019 Ford E-Series Cutaway E450 SUPER DUTY CUTAWAY VAN

T & B Auto Sales - 501-847-2727 - View this car on our website at [workvansandtrucks.com/6827005/ebrochure](http://workvansandtrucks.com/6827005/ebrochure)

## Installed Options

### Interior

- Dual High Back Buckets- 4-Way Driver Seat -inc: Manual Recline and Fore/Aft Movement
- 4-Way Passenger Seat -inc: Manual Recline and Fore/Aft Movement
- Manual Tilt Steering Column
- Gauges -inc: Speedometer, Odometer, Voltmeter, Oil Pressure, Engine Coolant Temp, Tachometer and Trip Odometer
- Front Cupholder- Manual Air Conditioning- Glove Box- Front Vinyl Headliner
- Urethane Gear Shifter Material- Vinyl Bucket Seats
- Engine Cover Console w/Storage and 3 12V DC Power Outlets - Regular Dome Lighting
- Front Only Vinyl/Rubber Floor Covering- Driver And Passenger Door Bins
- Manual 1st Row Windows- Analog Display- Fixed Front Head Restraints
- Driver And Front Passenger Armrests- 3 12V DC Power Outlets

### Exterior

- Wheels: 16" x 6" White Painted Steel- Tires: LT225/75R16E BSW AS- Clearcoat Paint
- Black Front Bumper- Black Side Windows Trim and Black Front Windshield Trim
- Black Door Handles- Light Tinted Glass- Variable Intermittent Wipers
- Front Windshield -inc: Sun Visor Strip- Fully Galvanized Steel Panels- Black Grille
- Aero-Composite Halogen Headlamps

### Safety

- Dual High Back Buckets- 4-Way Driver Seat -inc: Manual Recline and Fore/Aft Movement
- 4-Way Passenger Seat -inc: Manual Recline and Fore/Aft Movement
- Manual Tilt Steering Column
- Gauges -inc: Speedometer, Odometer, Voltmeter, Oil Pressure, Engine Coolant Temp, Tachometer and Trip Odometer
- Front Cupholder- Manual Air Conditioning- Glove Box- Front Vinyl Headliner
- Urethane Gear Shifter Material- Vinyl Bucket Seats
- Engine Cover Console w/Storage and 3 12V DC Power Outlets - Regular Dome Lighting
- Front Only Vinyl/Rubber Floor Covering- Driver And Passenger Door Bins
- Manual 1st Row Windows- Analog Display- Fixed Front Head Restraints
- Driver And Front Passenger Armrests- 3 12V DC Power Outlets

### Mechanical

- Engine: 6.8L EFI Triton V10
- Transmission: Electronic 6-Speed Automatic w/OD -inc: tow haul
- 4.56 Axle Ratio w/o 996-inc: a vehicle emission control information label with no frontal area restriction w/996&115F-inc: a vehicle emission control information label with a 72 sq ft frontal area restriction
- GVWR: 14,500 lb Payload Package -inc: Maximum Front GAWR: 5000 lbs
- 50 State Emission System- Transmission w/Oil Cooler- Rear-Wheel Drive
- 72-Amp/Hr 650CCA Maintenance-Free Battery- 155 Amp Alternator
- 9090# Maximum Payload- HD Shock Absorbers- Front And Rear Anti-Roll Bars
- Hydraulic Power-Assist Steering- Single Stainless Steel Exhaust- 55 Gal. Fuel Tank
- Dual Rear Wheels- Front Suspension w/Coil Springs
- Leaf Rear Suspension w/Leaf Springs
- 4-Wheel Disc Brakes w/4-Wheel ABS and Front Vented Discs



[workvansandtrucks.com](http://workvansandtrucks.com)

501-847-2727

25637 I-30

Bryant, AR 72022

© 2020 AutoRevo - All rights reserved. - Powered by AutoRevo