

# 2019 Ford E-Series Cutaway E450 SUPER DUTY CUTAWAY VAN

View this car on our website at [workvansandtrucks.com/6827004/ebrochure](http://workvansandtrucks.com/6827004/ebrochure)



Our Price **\$0**

Retail Value ~~\$34,995~~

## Specifications:

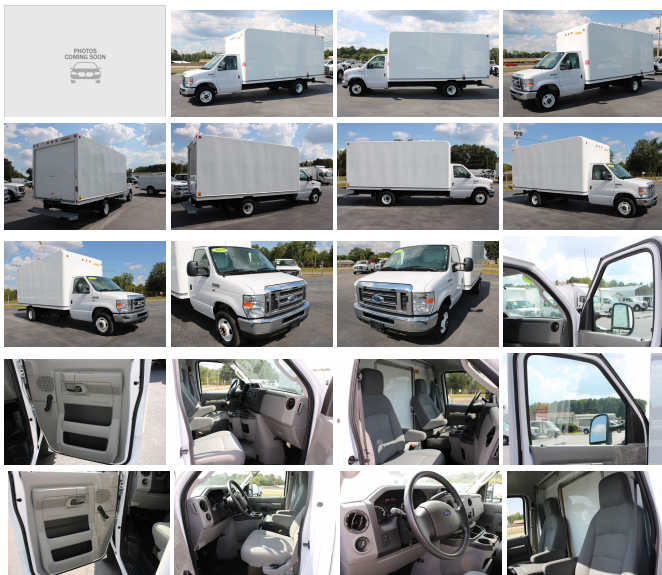
|                    |                                              |
|--------------------|----------------------------------------------|
| <b>Year:</b>       | 2019                                         |
| <b>VIN:</b>        | 1FDWE4F69KDC43022                            |
| <b>Make:</b>       | Ford                                         |
| <b>Stock:</b>      | B2516                                        |
| <b>Model/Trim:</b> | E-Series Cutaway E450 SUPER DUTY CUTAWAY VAN |
| <b>Condition:</b>  | Pre-Owned                                    |
| <b>Exterior:</b>   | WHITE                                        |
| <b>Interior:</b>   | GREY                                         |
| <b>Mileage:</b>    | 11,817                                       |
| <b>Drivetrain:</b> | Rear Wheel Drive                             |

2019 FORD E450 ECONOLINE XL CUTAWAY 16 FOOT BOX TRUCK  
6.2 GAS ENGINE, AUTOMATIC TRANSMISSION.

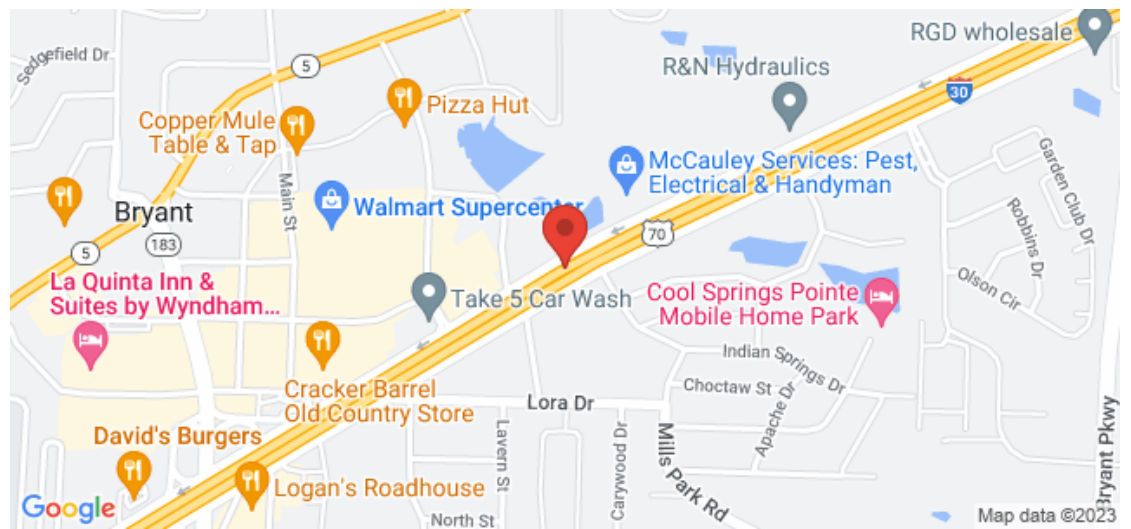
This 1 1/4-ton work truck comes with Manual Windows, Manual Door Locks, Manual Mirrors, Tow Mirrors, Tilt Steering Wheel, Tow Haul Mode, am/fm/radio, Cloth Seats with Arm Rest on Both Sets,

UNICELL Fiberglass One Piece Body, Pass throughs Door, Rear Roll up Door, Low Deck Rear Step, Walk Ramp, Painted Cargo Floor, 1 BY 4 Tie Down Slats, Led Cargo Light, Led Taillights, Led Marked Lights,

Current Oil and Filter Service.



**Our Location :**



2019 Ford E-Series Cutaway E450 SUPER DUTY CUTAWAY VAN

T & B Auto Sales - 501-847-2727 - View this car on our website at [workvansandtrucks.com/6827004/ebrochure](http://workvansandtrucks.com/6827004/ebrochure)

## Installed Options

### Interior

- Dual High Back Buckets- 4-Way Driver Seat -inc: Manual Recline and Fore/Aft Movement
- 4-Way Passenger Seat -inc: Manual Recline and Fore/Aft Movement
- Manual Tilt Steering Column
- Gauges -inc: Speedometer, Odometer, Voltmeter, Oil Pressure, Engine Coolant Temp, Tachometer and Trip Odometer
- Front Cupholder- Manual Air Conditioning- Glove Box- Front Vinyl Headliner
- Urethane Gear Shifter Material- Vinyl Bucket Seats
- Engine Cover Console w/Storage and 3 12V DC Power Outlets - Regular Dome Lighting
- Front Only Vinyl/Rubber Floor Covering- Driver And Passenger Door Bins
- Manual 1st Row Windows- Analog Display- Fixed Front Head Restraints
- Driver And Front Passenger Armrests- 3 12V DC Power Outlets

### Exterior

- Wheels: 16" x 6" White Painted Steel- Tires: LT225/75R16E BSW AS- Clearcoat Paint
- Black Front Bumper- Black Side Windows Trim and Black Front Windshield Trim
- Black Door Handles- Light Tinted Glass- Variable Intermittent Wipers
- Front Windshield -inc: Sun Visor Strip- Fully Galvanized Steel Panels- Black Grille
- Aero-Composite Halogen Headlamps

### Safety

- Dual High Back Buckets- 4-Way Driver Seat -inc: Manual Recline and Fore/Aft Movement
- 4-Way Passenger Seat -inc: Manual Recline and Fore/Aft Movement
- Manual Tilt Steering Column
- Gauges -inc: Speedometer, Odometer, Voltmeter, Oil Pressure, Engine Coolant Temp, Tachometer and Trip Odometer
- Front Cupholder- Manual Air Conditioning- Glove Box- Front Vinyl Headliner
- Urethane Gear Shifter Material- Vinyl Bucket Seats
- Engine Cover Console w/Storage and 3 12V DC Power Outlets - Regular Dome Lighting
- Front Only Vinyl/Rubber Floor Covering- Driver And Passenger Door Bins
- Manual 1st Row Windows- Analog Display- Fixed Front Head Restraints
- Driver And Front Passenger Armrests- 3 12V DC Power Outlets

### Mechanical

- Engine: 6.8L EFI Triton V10
- Transmission: Electronic 6-Speed Automatic w/OD -inc: tow haul
- 4.56 Axle Ratio w/o 996-inc: a vehicle emission control information label with no frontal area restriction w/996&115F-inc: a vehicle emission control information label with a 72 sq ft frontal area restriction
- GVWR: 14,500 lb Payload Package -inc: Maximum Front GAWR: 5000 lbs
- 50 State Emission System- Transmission w/Oil Cooler- Rear-Wheel Drive
- 72-Amp/Hr 650CCA Maintenance-Free Battery- 155 Amp Alternator
- 9090# Maximum Payload- HD Shock Absorbers- Front And Rear Anti-Roll Bars
- Hydraulic Power-Assist Steering- Single Stainless Steel Exhaust- 55 Gal. Fuel Tank
- Dual Rear Wheels- Front Suspension w/Coil Springs
- Leaf Rear Suspension w/Leaf Springs
- 4-Wheel Disc Brakes w/4-Wheel ABS and Front Vented Discs



[workvansandtrucks.com](http://workvansandtrucks.com)

501-847-2727

25637 I-30

Bryant, AR 72022

© 2023 AutoRevo - All rights reserved. - Powered by AutoRevo