



2017 Chevrolet Camaro 1SS w/ MANY Upgrades!

Website Price \$25,995

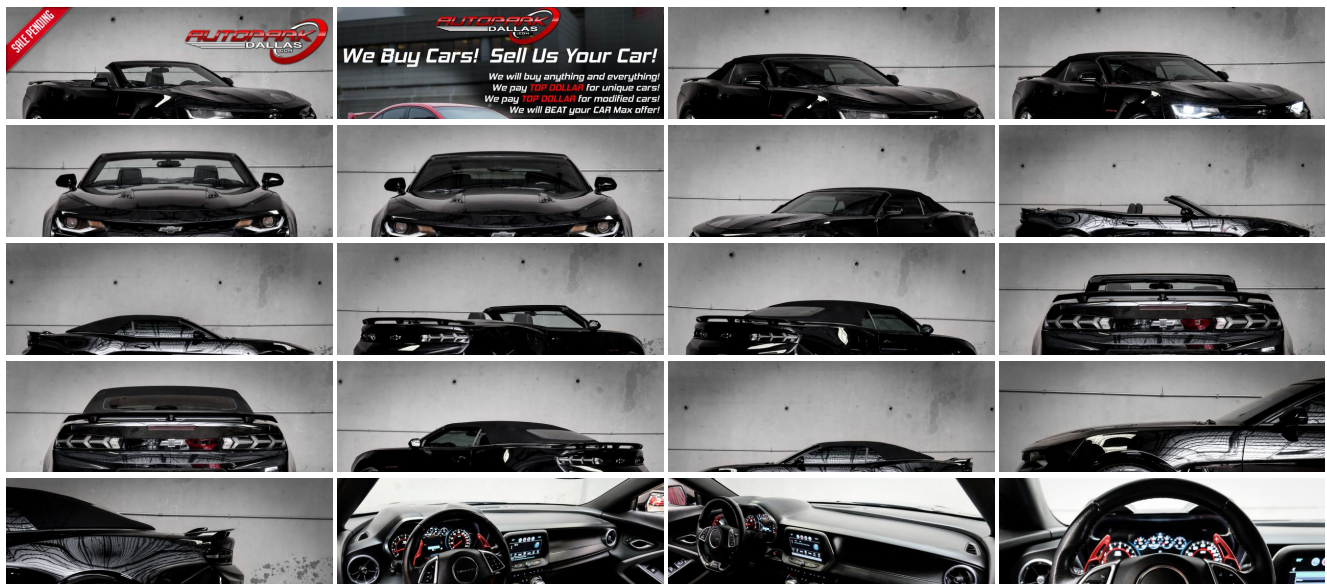
View this vehicle on our website at autoparkdallas.com



(214) 945-2601

2061 S Stemmons Fwy , Lewisville, TX 75067

- Photos
- Details
- Contact



Specifications:

Year:	2017
VIN:	1G1FF3D70H0142824
Make:	Chevrolet
Model/Trim:	Camaro 1SS w/ MANY Upgrades!
Condition:	Pre-Owned
Body:	Convertible
Exterior:	Black
Engine:	ENGINE, 6.2L (376 CI) V8 DI
Interior:	Black
Transmission:	TRANSMISSION, 8-SPEED AUTOMATIC
Mileage:	70,981
Drivetrain:	Rear Wheel Drive
Economy:	City 17 / Highway 27

Vehicle Description

AutoPark Dallas is thrilled to offer you this modified (Car) for sale!

MORE DETAILS COMING SOON!!!

Financing is available!

Check out our Payment Calculator to get an estimate on your monthly payments!

OR

Get pre-approved in no time by filling out a credit application on the 'Finance' section of our website!

Check out our Google Reviews by *Clicking* this [LINK!](#)

Referrals and Testimonials is what our business is built on!

The team here at AutoPark Dallas, is dedicated to offering a level of customer service not usually found in the automobile industry. Thanks to years of extensive car buying / selling experience, we pursue quality used and new vehicles that are hand-picked from factory sources. Our love for automobiles and dislike of traditional dealership tactics is what motivates us to provide the service we do! The pride we take in continuing this service long after the vehicle has been delivered is what we strive for! Looking forward to making every effort to see that our customer is completely satisfied and a friend for life!

Pre-purchase inspections are always welcomed!

We also offer airport pick-up, competitive financing options, free CarFax Reports, Car Shipping nationwide, Extended Warranty plans, and so much more!

Trade-In(s) are always accepted or sell us your used car (MODIFIED OR NOT)! Please call or text for more information about Trade-Ins or selling your car to us @ (214) 945-2601!

#(214) 945-2601

Call or Text *Anytime!*

Se habla Español

WE BUY CARS!

WWW.AUTOPARKDALLAS.COM

Installed Options

Interior

- Defogger, rear-window, electric
- Door locks, power programmable with lockout protection- Floor mats, carpeted front
- Keyless Open and Start includes 2 remote transmitters that enable automatic door unlock and open by touching door switch
- Seats, Cloth front Sport bucket - Air conditioning, single-zone automatic climate control
- Compass display
- Cruise control, electronic with set and resume speed, steering wheel mounted
- Cup holders, 2 front- Dead pedal, driver
- Driver Information Center, enhanced, 8" diagonal multi-color re-configurable display
- Glovebox, lockable- Lighting, front reading lamps
- Mirror, inside rearview manual day/night, frameless
- Power outlet, 1 located on center console- Seat adjuster, driver, 8-way power
- Seat adjuster, front passenger, 6-way power- Seat, rear, fixed
- Shift knob, leather-wrapped- Speedometer, miles/kilometers
- Steering column, manual rake and telescopic
- Steering wheel, leather-wrapped, flat-bottom- Trunk release, power
- Visors, driver and front passenger vanity mirrors, covered, illuminated
- Windows, power with driver and passenger Express-Down/Up

Exterior

- Convertible top, power folding, remote control includes glass rear window with integral defogger
- Wheels, 20" x 8.5" (50.8 cm x 21.6 cm) front and 20" x 9.5" (50.8 cm x 24.1 cm) rear bright 5-spoke Silver-painted aluminum
- Headlamps, high intensity discharge with automatic exterior lamp control
- Mirrors, outside power-adjustable, body-color- Spoiler, rear, stanchion
- Tires, 245/40ZR20 front and 275/35ZR20 rear, blackwall, summer-only, run-flat (Do not use summer only tires in winter conditions, as it would adversely affect vehicle safety, performance and durability. Use only GM-approved tire and wheel combinations. Unapproved combinations may change the vehicle's performance characteristics. For important tire and wheel information, see your dealer for a copy of the vehicle's owner's manual.)
- Wipers, front variable-speed, intermittent with washers

Safety

- Defogger, rear-window, electric
- Door locks, power programmable with lockout protection- Floor mats, carpeted front
- Keyless Open and Start includes 2 remote transmitters that enable automatic door unlock and open by touching door switch
- Seats, Cloth front Sport bucket - Air conditioning, single-zone automatic climate control
- Compass display
- Cruise control, electronic with set and resume speed, steering wheel mounted
- Cup holders, 2 front- Dead pedal, driver
- Driver Information Center, enhanced, 8" diagonal multi-color re-configurable display
- Glovebox, lockable- Lighting, front reading lamps
- Mirror, inside rearview manual day/night, frameless
- Power outlet, 1 located on center console- Seat adjuster, driver, 8-way power
- Seat adjuster, front passenger, 6-way power- Seat, rear, fixed
- Shift knob, leather-wrapped- Speedometer, miles/kilometers
- Steering column, manual rake and telescopic
- Steering wheel, leather-wrapped, flat-bottom- Trunk release, power
- Visors, driver and front passenger vanity mirrors, covered, illuminated
- Windows, power with driver and passenger Express-Down/Up

Mechanical

Option Packages

Factory Installed Packages

ENGINE, 6.2L (376 CI) V8 DI
(455 hp [339.3 kW] @ 6000 rpm, 455 lb-ft of torque [614.3 N-m] @ 4400 rpm)

TRANSMISSION, 8-SPEED AUTOMATIC
includes transmission oil cooler and (BTV)
remote vehicle starter system **\$1,495**

Option Packages Total **\$1,495**

- Transmission, 6-speed manual (Includes Active Rev Matching.)
- Battery rundown protection
- Brakes, Brembo 4-piston front and rear, performance, 4-wheel antilock, 4-wheel disc
- Cooling system, extra capacity- Cooling, external engine oil cooler
- Differential, limited slip
- Driver Selector Mode up to 4 modes available for various driving conditions - Snow/Ice, Tour, Sport and Track (SS and ZL1 models only)
- Engine, 6.2L (376 ci) V8 DI (455 hp [339.3 kW] @ 6000 rpm, 455 lb-ft of torque [614.3 N-m] @ 4400 rpm)
- Exhaust, dual-outlet stainless-steel with bright tips - Fueling system, capless
- Rear axle, 3.73 ratio (Included with (MN6) 6-speed manual transmission.)
- Rear wheel drive- Steering, power, variable ratio, electric

AUTOPARK

Dallas

Auto Park Dallas

View this car on our website at autoparkdallas.com/6826876

Website: autoparkdallas.com

Phone: (214) 945-2601

Map: [2061 S Stemmons Fwy, Lewisville, TX 75067](#)

