

# 2017 Chevrolet Silverado 2500HD Work Truck

View this car on our website at [workvansandtrucks.com/6823279/ebrochure](http://workvansandtrucks.com/6823279/ebrochure)



Our Price **\$0**

Retail Value **\$31,995**

## Specifications:

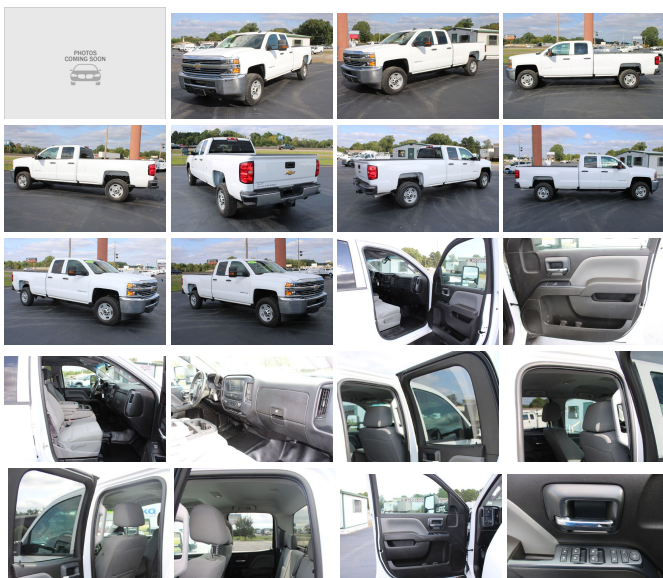
<b>Year:</b>	2017
<b>VIN:</b>	1GC2CUEG9HZ289531
<b>Make:</b>	Chevrolet
<b>Stock:</b>	T2501
<b>Model/Trim:</b>	Silverado 2500HD Work Truck
<b>Condition:</b>	Pre-Owned
<b>Body:</b>	Pickup Truck
<b>Exterior:</b>	WHITE
<b>Engine:</b>	ENGINE, VORTEC 6.0L VARIABLE VALVE TIMING V8 SFI, E85-COMPATIBLE, FLEXFUEL
<b>Mileage:</b>	46,194
<b>Drivetrain:</b>	Rear Wheel Drive

2017 CHEVROLET 2500 SILVERADO WT EXT CAB 4X2 LONG BED PICKUP 6.2 GAS ENGINE, AUTOMATIC TRANSMISSION.

This 3/4 ton rated work truck comes with Power Windows, Power Door Locks, Power Mirrors, Tow Mirrors, Tilt Steering Wheel, Cruise Control, Trailer Brake Controller, Tow Haul mode, Manual Shift Mode, Backup Camera, Locking Tail Gate, Rear Mounted Tow Hitch, Chrome Grill and Bumpers,

New Tire.

Current Oil and Filter Service,



## Our Location :



2017 Chevrolet Silverado 2500HD Work Truck

T & B Auto Sales - 501-847-2727 - View this car on our website at [workvansandtrucks.com/6823279/ebrochure](http://workvansandtrucks.com/6823279/ebrochure)

## Installed Options

### Interior

- Seats, front 40/20/40 split-bench, 3-passenger, driver and front passenger recline with outboard head restraints and center fold-down armrest with storage. Vinyl has fixed lumbar and cloth has manually adjustable driver lumbar. (Upgradeable to (AZ3) front 40/20/40 split-bench seat.)
- Seat trim, Vinyl
- Seat, rear full-width folding bench, 3-passenger (includes child seat top tether anchor) (Requires Double Cab models.)
- Floor covering, Graphite-colored rubberized-vinyl- Steering column, manual Tilt-Wheel
- Steering wheel
- Instrumentation, 6-gauge cluster featuring speedometer, fuel level, engine temperature, tachometer, voltage and oil pressure
- Driver Information Center, 3.5-inch diagonal monochromatic display provides warning messages and basic vehicle information
- Windows, power with driver express up and down and express down on all other windows (Standard on Crew Cab and Double Cab. On Regular Cab, Included and only available with (PCM) WT Convenience Package.) (Standard on Crew Cab and Double Cab. On Regular Cab, Included and only available with (PCR) WT Fleet Convenience Package.)
- Door locks, power- Cruise control, steering wheel-mounted- Air conditioning, single-zone
- Assist handle, front passenger and driver on A-pillars

### Exterior

- Bumper, rear chrome with bumper CornerSteps (Requires (E63) pickup box.)
- Grille surround, chrome- Headlamps, halogen projector-beam
- Lamps, cargo area, cab mounted with switch on center switch bank
- Mirrors, outside manual, Black- Glass, solar absorbing, tinted- Door handles, Black
- Tailgate and bed rail protection caps, top
- Tailgate, locking, utilizes same key as ignition and door (Not available with (AQQ) Remote Keyless Entry.)
- CornerStep, rear bumper (Requires (E63) pickup box.)- Bumper, front chrome
- Tire carrier lock keyed cylinder lock that utilizes same key as ignition and door (Not included with (AQQ) Remote Keyless Entry.) (Not available with (AQQ) Remote Keyless Entry.)

included when (ZVW9) pickup box delete or (9J4) rear bumper delete is ordered.)

- Tires, LT245/75R17E all-season, blackwall
- Wheels, 17" (43.2 cm) steel includes 17" x 7.5" (43.2 cm x 19.1 cm) steel spare wheel. Spare not included with (ZW9) pickup box delete unless a spare tire is ordered

## Safety

- Seats, front 40/20/40 split-bench, 3-passenger, driver and front passenger recline with outboard head restraints and center fold-down armrest with storage. Vinyl has fixed lumbar and cloth has manually adjustable driver lumbar. (Upgradeable to (AZ3) front 40/20/40 split-bench seat.)
- Seat trim, Vinyl
- Seat, rear full-width folding bench, 3-passenger (includes child seat top tether anchor) (Requires Double Cab models.)
- Floor covering, Graphite-colored rubberized-vinyl- Steering column, manual Tilt-Wheel
- Steering wheel
- Instrumentation, 6-gauge cluster featuring speedometer, fuel level, engine temperature, tachometer, voltage and oil pressure
- Driver Information Center, 3.5-inch diagonal monochromatic display provides warning messages and basic vehicle information
- Windows, power with driver express up and down and express down on all other windows (Standard on Crew Cab and Double Cab. On Regular Cab, Included and only available with (PCM) WT Convenience Package.) (Standard on Crew Cab and Double Cab. On Regular Cab, Included and only available with (PCR) WT Fleet Convenience Package.)
- Door locks, power- Cruise control, steering wheel-mounted- Air conditioning, single-zone
- Assist handle, front passenger and driver on A-pillars

## Mechanical

- Exhaust, aluminized stainless-steel muffler and tailpipe
- Capless Fuel Fill (Gas engine only. Not available with (ZW9) pickup box delete.)
- Brakes, 4-wheel antilock, 4-wheel disc with DuraLife brake rotors
- Steering, Recirculating Ball with smart flow power steering system
- Recovery hooks, front, frame-mounted, black
- Frame, fully-boxed, hydroformed front section- Alternator, 150 amps
- Battery, heavy-duty 720 cold-cranking amps/80 Amp-hr, maintenance-free with rundown protection and retained accessory power
- Cooling, auxiliary external transmission oil cooler- Cooling, external engine oil cooler
- Rear wheel drive- Differential, heavy-duty locking rear- Air cleaner, high-capacity
- GVWR, 9500 lbs. (4309 kg) (Requires (L96) Vortec 6.0L V8 SFI engine. Not available with CK25943 or CC25903 model.)
- Pickup box
- Suspension Package, Standard includes 51mm twin tube shock absorbers and 33mm front stabilizer bar
- Rear axle, 4.10 ratio (Requires (L96) Vortec 6.0L V8 SFI engine.)
- Transmission, 6-speed automatic, heavy-duty, electronically controlled with overdrive and tow/haul mode. Includes Cruise Grade Braking and Powertrain Grade Braking (Requires (L96) Vortec 6.0L V8 SFI engine.)
- Engine, Vortec 6.0L Variable Valve Timing V8 SFI, E85-compatible, FlexFuel capable of running on unleaded or up to 85% ethanol (360 hp [268.4 kW] @ 5400 rpm, 380 lb-ft of torque [515.0 N-m] @ 4200 rpm) (Does not include E85 capability with (ZW9) pickup box delete.)

## Option Packages

### Factory Installed Packages

-  
ENGINE, VORTEC 6.0L VARIABLE VALVE TIMING V8 SFI, E85-COMPATIBLE, FLEXFUEL  
capable of running on unleaded or up to 85% ethanol (360 hp [268.4 kW] @ 5400 rpm, 380 lb-ft of torque [515.0 N-m] @ 4200 rpm)

-  
AIR BAG DEACTIVATION SWITCH, FRONTAL PASSENGER-SIDE



[workvansandtrucks.com](http://workvansandtrucks.com)

501-847-2727

25637 I-30

Bryant, AR 72022

© 2020 AutoRevo - All rights reserved. - Powered by AutoRevo