



## 1998 Chevrolet Corvette Pace Car

**Our Price \$49,995**

View this vehicle on our website at [wheelsunltd.com](http://wheelsunltd.com)

Wheels Unlimited

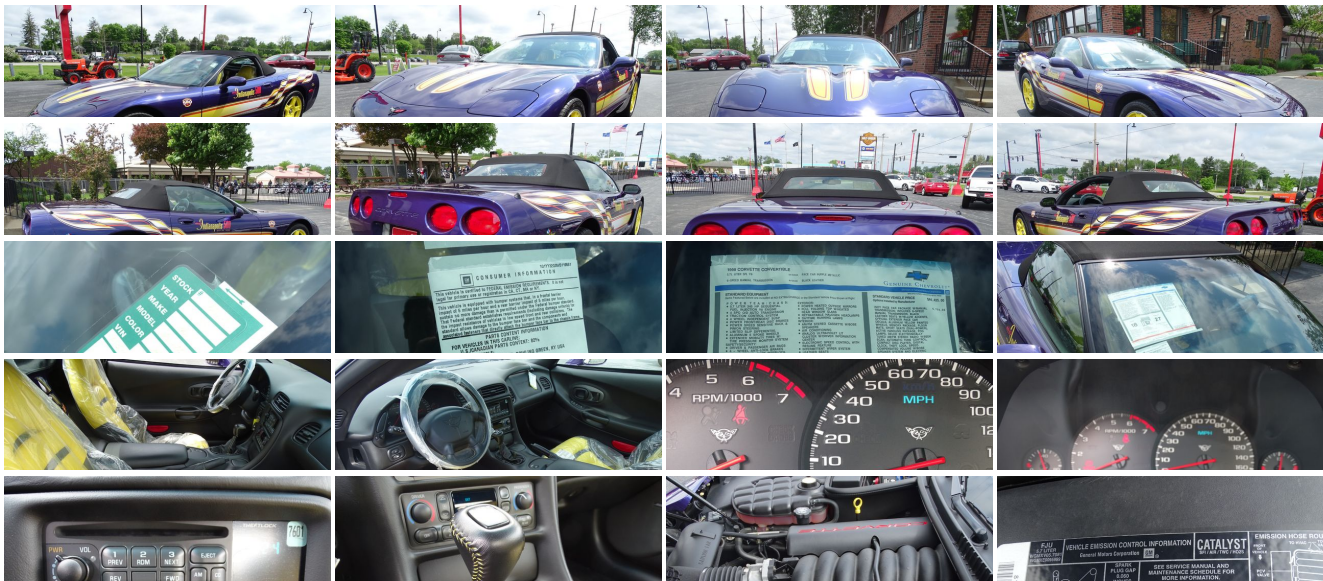
(219) 464-3736

1151 Northland Drive, Valparaiso, Indiana 46385

Photos

Details

Contact



## Specifications:

Year:	1998
VIN:	1G1YY32G0W5119551
Make:	Chevrolet
Stock:	11-073
Model/Trim:	Corvette Pace Car
Condition:	Pre-Owned
Body:	Convertible
Exterior:	Purple
Engine:	5.7L (350) SFI V8 ENGINE
Interior:	Leather
Transmission:	6-SPEED MANUAL TRANSMISSION W/5TH & 6TH GEAR OD
Mileage:	53
Drivetrain:	Rear Wheel Drive
Economy:	City 17 / Highway 25

## Vehicle Description

## Installed Options

### Interior

- 6-way pwr driver seat- Air conditioning
- Center console-inc: cupholder, ashtray, coin tray, cassette/CD storage
- Courtesy lighting-inc: cargo area, console, glovebox
- Day/night rearview mirror w/reading lamps- Dual illuminated covered visor mirrors
- ETR AM/FM stereo w/cassette-inc: seek-scan, digital clock, Bose speaker system
- Electronic speed control w/resume speed
- Electronic white analog gauges w/multi-language driver information center
- Leather bucket seats w/lateral support & back angle adjustment
- Leather-wrapped sport tilt steering wheel
- Lockable storage compartments-inc: console, glovebox, (3) rear compartments
- Low oil level warning light- Low tire pressure monitor
- PASS-Key II theft deterrent system - Pwr door locks
- Pwr windows w/driver & passenger-side express down- Rear window defogger
- Remote keyless entry w/remote hatch release
- Scotchgard fabric protector on floor covering- Side window defoggers
- Underhood courtesy lamp

### Exterior

- Acoustic insulation pkg- Base coat/clear coat paint- Daytime running lamps
- Dual electrically adjustable heated outside folding rearview mirrors - Intermittent wipers
- Manual insulated convertible top w/heated glass back light
- Pwr operated retractable halogen headlamps- Solar-ray tinted glass

### Safety

- 6-way pwr driver seat- Air conditioning
- Center console-inc: cupholder, ashtray, coin tray, cassette/CD storage
- Courtesy lighting-inc: cargo area, console, glovebox
- Day/night rearview mirror w/reading lamps- Dual illuminated covered visor mirrors
- ETR AM/FM stereo w/cassette-inc: seek-scan, digital clock, Bose speaker system
- Electronic speed control w/resume speed
- Electronic white analog gauges w/multi-language driver information center
- Leather bucket seats w/lateral support & back angle adjustment
- Leather-wrapped sport tilt steering wheel
- Lockable storage compartments-inc: console, glovebox, (3) rear compartments
- Low oil level warning light- Low tire pressure monitor
- PASS-Key II theft deterrent system - Pwr door locks
- Pwr windows w/driver & passenger-side express down- Rear window defogger
- Remote keyless entry w/remote hatch release
- Scotchgard fabric protector on floor covering- Side window defoggers
- Underhood courtesy lamp

### Mechanical

- 4-speed electronically-controlled automatic transmission w/OD
- 17" x 8.5" front 5-spoke aluminum wheels - 18" x 9.5" rear 5-spoke aluminum wheels
- 2.73 rear axle ratio- 4-wheel anti-lock braking system
- 4-wheel double wishbone independent suspension w/transverse fiberglass leaf springs
- 5.7L (350) SFI V8 engine - Brake/transmission shift interlock
- Distributorless opti-spark ignition system- Dual lifetime stainless steel exhaust
- Limited slip differential- P245/45ZR17 extended mobility Eagle F-1 GS front tires
- P275/40ZR18 extended mobility Eagle F-1 GS rear tires - Pwr 4-wheel disc brakes
- Rear opening hood for easy engine access - Rear wheel drive
- Speed sensitive variable assist rack & pinion steering - Traction control
- Uniframe design body structure w/corrosion resistant coating

## Option Packages

### Factory Installed Packages

5.7L (350) SFI V8 ENGINE

6-SPEED MANUAL TRANSMISSION W/5TH & 6TH GEAR OD  
-inc: 3.42 axle ratio **\$815**

FOG LAMPS **\$69**

FRONT FLOOR MATS **\$25**

MEMORY PKG  
-inc: remembers outside rearview mirror positions, radio/HVAC/pwr driver seat settings **\$150**

PWR 6-WAY PASSENGER SEAT **\$305**

PREFERRED EQUIPMENT GROUP  
-inc: base vehicle

LEATHER SEAT TRIM

BUCKET SEATS

Option Packages Total **\$1,364**

Wheels Unlimited

Wheels Unlimited

View this car on our website at [wheelsunltd.com/6820798](http://wheelsunltd.com/6820798)

Website: [wheelsunltd.com](http://wheelsunltd.com)

Phone: (219) 464-3736

Map: [1151 Morthland Drive, Valparaiso, Indiana 46385](#)

