

## 2003 Chevrolet Corvette 50th Anniversary Edition!

**Website Price \$13,995**

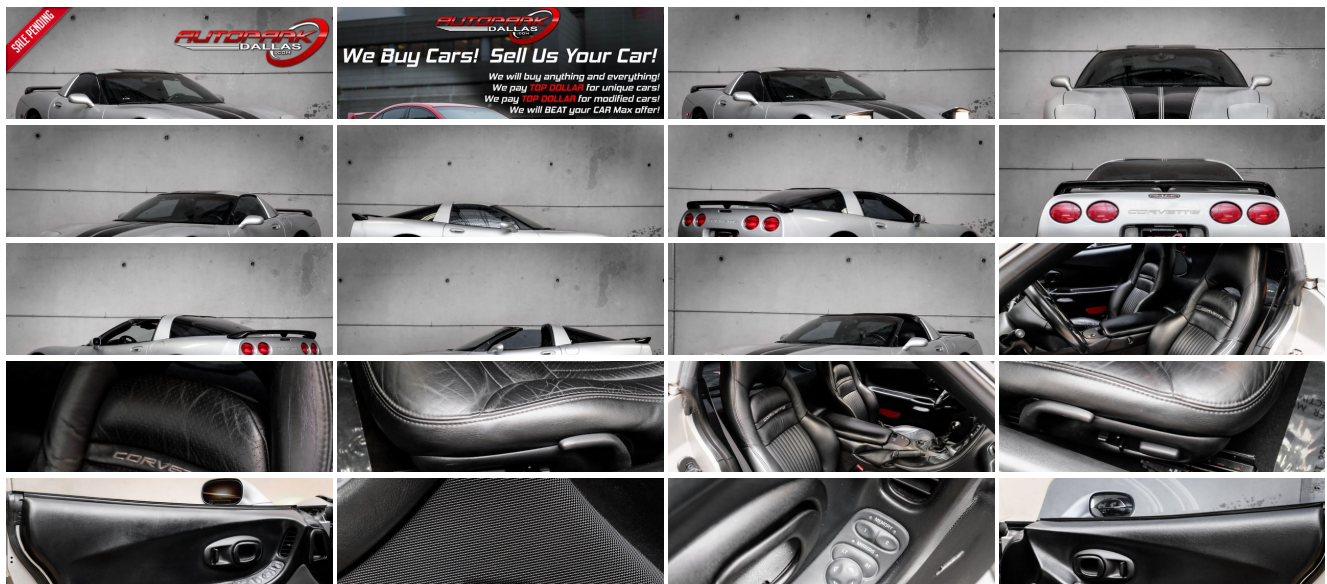
View this vehicle on our website at [autoparkdallas.com](http://autoparkdallas.com)



(214) 945-2601

2061 S Stemmons Fwy , Lewisville, TX 75067

- Photos
- Details
- Contact



## Specifications:

<b>Year:</b>	2003
<b>VIN:</b>	<a href="#">1G1YY22G635104042</a>
<b>Make:</b>	Chevrolet
<b>Model/Trim:</b>	Corvette 50th Anniversary Edition!
<b>Condition:</b>	Pre-Owned
<b>Body:</b>	Coupe
<b>Exterior:</b>	Quicksilver Metallic
<b>Engine:</b>	ENGINE, 5.7L LS1 V8 SFI
<b>Interior:</b>	Black Leather
<b>Transmission:</b>	TRANSMISSION, 4-SPEED AUTOMATIC, ELECTRONICALLY CONTROLLED W/OVERDRIVE
<b>Mileage:</b>	76,454
<b>Drivetrain:</b>	Rear Wheel Drive
<b>Economy:</b>	City 18 / Highway 25

## Vehicle Description

AutoPark Dallas is thrilled to offer you this 50th Anniversary Edition 2003 Chevrolet Corvette for sale! There is not a soul that does not know the Corvette, with its signature look and being a low-profile sport car. These bald eagle screaming U.S. born beauties are a thrill to drive and always stand out in any crowded car meet or parking lot. Our Corvette here APD is a 50th Anniversary Edition, a commemorative time celebrating 50 years of American made beauty that will always make us consumers smile! Come check out a bit of history with this freedom ringing Corvette parked in our indoor 16,000 Sq Ft Showroom located in Addison, Tx. amongst our inventory of 100+ other unique and luxury vehicles!

---

### 2003 Chevrolet Corvette

\* 50th Anniversary Edition!

\*2 Previous Owners!\*

\*2 Set of Keys!\*

\*LOW MILEAGE!\*

Quicksilver Metallic Exterior Exterior

Color-Matching Removable T-Top

Black Leather Interior

\* Aftermarket Rear Spoiler !\*

\* Aftermarket Slotted Rotors !\*

Driver Seat Memory

Dual Climate Controls

BOSE Premium Audio System

Daytime Running Lights

Cruise Control

LS1 V8 SFI Engine

4-Speed Automatic Transmission

Rear Wheel Drive

Professionally Detailed!

Well Maintained!

\* Free CarFax Report !\*

## Financing is available!

Check out our Payment Calculator to get an estimate on your monthly payments!

OR

Get pre-approved in no time by filling out a credit application on the 'Finance' section of our website!

We also offer MANY different Extended Warranty options!

**Check out our Google Reviews by \*Clicking\* this LINK!**

Referrals and Testimonials is what our business is built on!

The team here at AutoPark Dallas, is dedicated to offering a level of customer service not usually found in the automobile industry. Thanks to years of extensive car buying / selling experience, we pursue quality used and new vehicles that are hand-picked from factory sources. Our love for automobiles and dislike of traditional dealership tactics is what motivates us to provide the service we do! The pride we take in continuing this service long after the vehicle has been delivered is what we strive for! Looking forward to making every effort to see that our customer is completely satisfied and a friend for life!

Pre-purchase inspections are always welcomed!

We also offer airport pick-up, competitive financing options, free CarFax Reports, Car Shipping nationwide, Extended Warranty plans, and so much more!

Trade-In(s) are always accepted or sell us your used car (MODIFIED OR NOT)! Please call or text for more information about Trade-Ins or selling your car to us @ (214) 945-2601!

**#(214) 945-2601**

**Call or Text *Anytime!***

**Se habla Español**

**WE BUY CARS!**

**WWW.AUTOPARKDALLAS.COM**

### Installed Options

#### Interior

- Air conditioning, dual-zone, automatic-inc: individual climate settings for driver & right front passenger, automatic climate control & outside temperature display
- Antenna, integral, front & rear
- Console, floor, lockable-inc: integral cupholder, ashtray, coin holder, auxiliary power outlet & cassette/CD storage
- Cruise control, electronic w/set & resume speed-inc: telltale in instrument panel cluster
- Defogger, rear-window, electric-inc: front & side window outlets, driver & front passenger
- Floor mats, carpeted- Instrumentation, analog, electronic-inc: Driver Information Center
- Keyless entry, remote-inc: panic button & trunk/hatch release
- Lighting, interior, courtesy, cargo console & glovebox
- Luggage shade-inc: cargo convenience net

### Option Packages

#### Factory Installed Packages

ENGINE, 5.7L LS1 V8 SFI  
(350 HP [261.0 kW] @ 5200 rpm, 375 lb.-ft.  
[506.2 N-m] @ 4000 rpm for manual  
transmission, 360 lb.-ft. [486.0 N-m] @ 4000 rpm  
for automatic transmission)

TRANSMISSION, 4-SPEED AUTOMATIC, ELECTRONICALLY  
CONTROLLED W/OVERDRIVE

- Luggage shade-inc: cargo convenience net
- Mirror, inside rearview, manual day/night-inc: dual reading lights
- Seat adjuster, power, driver 6-way- Seat adjuster, power, front passenger 6-way
- Seats, front leather seating surfaces bucket, Sport-inc: lateral support & back angle adjustment, adjustable lumbar & side bolsters, & 6-way power driver & front passenger seats
- Sound system feature, Bose speaker & amplifier system
- Sound system, ETR AM/FM stereo w/CD player-inc: seek-&-scan, digital clock, auto-tone control, speed-compensated volume & TheftLock
- Steering column, Tilt-Wheel-inc: (NK4) Steering wheel, leather-wrapped rim
- Storage-inc: lockable glovebox, center console & 3 rear compartments w/covers
- Theft-deterrent alarm system- Theft-deterrent system, PASS-Key II
- Tire Pressure Monitor System
- Visors, illuminated vanity mirrors, driver & front passenger
- Windows, power-inc: driver & passenger express-down

## Exterior

- Daytime running lamps- Fog lamps, front, integral in fascia
- Frame, uniframe-inc: corrosion-resistant coating- Glass, Solar-Ray light tinted
- Hatch, rear, full-framed w/interior remote release
- Headlamps, halogen, power-operated retractable- Induction system, outside air
- Mirrors, outside rearview, power, heated, body-color- Paint, basecoat/clearcoat
- Roof panel, removable, 1-piece, body-color- Wipers, intermittent, front

## Safety

- Air conditioning, dual-zone, automatic-inc: individual climate settings for driver & right front passenger, automatic climate control & outside temperature display
- Antenna, integral, front & rear
- Console, floor, lockable-inc: integral cupholder, ashtray, coin holder, auxiliary power outlet & cassette/CD storage
- Cruise control, electronic w/set & resume speed-inc: telltale in instrument panel cluster
- Defogger, rear-window, electric-inc: front & side window outlets, driver & front passenger
- Floor mats, carpeted- Instrumentation, analog, electronic-inc: Driver Information Center
- Keyless entry, remote-inc: panic button & trunk/hatch release
- Lighting, interior, courtesy, cargo console & glovebox
- Luggage shade-inc: cargo convenience net
- Mirror, inside rearview, manual day/night-inc: dual reading lights
- Seat adjuster, power, driver 6-way- Seat adjuster, power, front passenger 6-way
- Seats, front leather seating surfaces bucket, Sport-inc: lateral support & back angle adjustment, adjustable lumbar & side bolsters, & 6-way power driver & front passenger seats
- Sound system feature, Bose speaker & amplifier system
- Sound system, ETR AM/FM stereo w/CD player-inc: seek-&-scan, digital clock, auto-tone control, speed-compensated volume & TheftLock
- Steering column, Tilt-Wheel-inc: (NK4) Steering wheel, leather-wrapped rim
- Storage-inc: lockable glovebox, center console & 3 rear compartments w/covers
- Theft-deterrent alarm system- Theft-deterrent system, PASS-Key II
- Tire Pressure Monitor System
- Visors, illuminated vanity mirrors, driver & front passenger
- Windows, power-inc: driver & passenger express-down

## Mechanical

- Wheels, 5-spoke aluminum, 17" x 8.5" (43.2 cm x 21.6 cm), front & 18" x 9.5" (45.7 cm x 24.1 cm), rear
- 18.0 gallon fuel tank- Active handling, improves traction & enhances vehicle stability
- Axle, 2.73 ratio, limited slip- Brakes, 4-wheel antilock, 4-wheel disc
- Engine access, rear opening hood-inc: underhood lamp
- Engine, 5.7L LS1 V8 SFI (350 HP [261.0 kW] @ 5200 rpm, 375 lb.-ft. [506.2 N-m] @ 4000 rpm for manual transmission, 360 lb.-ft. [486.0 N-m] @ 4000 rpm for automatic transmission)
- Exhaust outlets, chrome-plated tips
- Exhaust, stainless-steel, aluminized stainless-steel at rear of catalytic converter
- Rear wheel drive
- Suspension, 4-wheel independent-inc: transverse fiberglass leaf springs
- Tires, front P245/45ZR17, extended mobility, Eagle F1
- Tires, rear P275/40ZR18, extended mobility, Eagle F1- Traction control, all-speed
- Transmission, 4-speed automatic, electronically controlled w/overdrive

## LICENSE PLATE BRACKET, FRONT

\$15

## MOLDINGS, BODYSIDE, BODY-COLOR

\$150

## SOUND SYSTEM, 12-DISC CD CHANGER, REMOTE

\$600

## EMISSIONS, FEDERAL REQUIREMENTS

## SOLID PAINT

## PREFERRED EQUIPMENT GROUP

- inc: head-up display, electrochromic rearview/driver-side mirrors, memory pkg, pwr telescopic steering column, Twilight Sentinel head lamp control system

\$1,200

## SOUND SYSTEM, ETR AM/FM STEREO W/CD PLAYER

- inc: seek-&-scan, digital clock, auto-tone control, speed-compensated volume & TheftLock

## HIGHWEAR NUANCE LEATHER SEAT TRIM

## SEATS, FRONT LEATHER SEATING SURFACES BUCKET, SPORT

- inc: lateral support & back angle adjustment, adjustable lumbar & side bolsters & 6-way power driver & front passenger seats

## WHEELS, 5-SPOKE, HIGH-POLISHED ALUMINUM, 17" x 8.5" (43.2 CM x 21.6 CM), FRONT & 18" x 9.5" (45.7 CM x 24.1 CM), REAR

\$1,295

## Option Packages Total

\$3,260

# AUTOPARK

## Dallas

Auto Park Dallas

View this car on our website at [autoparkdallas.com/6820422](http://autoparkdallas.com/6820422)

Website: [autoparkdallas.com](http://autoparkdallas.com)

Phone: (214) 945-2601

Map: 2061 S Stemmons Fwy, Lewisville, TX 75067

