

2017 Chevrolet Express Commercial Cutaway WT CUTAWAY UTILITY BOX TRUCK

View this car on our website at workvansandtrucks.com/6820254/ebrochure

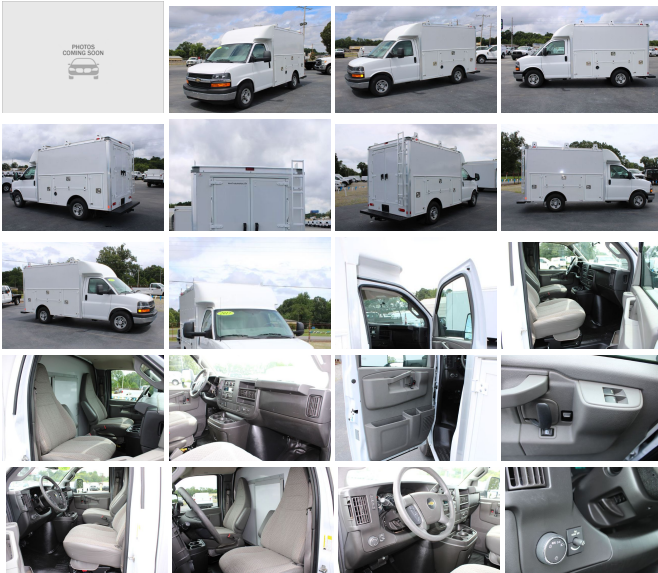


Our Price **\$38,500**

Specifications:

Year:	2017
VIN:	1GB0GRFF0H1153838
Make:	Chevrolet
Stock:	U2496
Model/Trim:	Express Commercial Cutaway WT CUTAWAY UTILITY BOX TRUCK
Condition:	Pre-Owned
Exterior:	WHITE
Engine:	ENGINE, VORTEC 4.8L V8
Mileage:	49,888
Drivetrain:	Rear Wheel Drive

2017 CHEVROLET 3500 EXPRESS WT CUTAWAY UTILITY BOX TRUCK 4.8 GAS ENGINE, AUTOMATIC TRANSMISION.



This 1 Ton Supreme KUV Style Utility Truck comes with Power Windows, Power Door Locks, Manual Mirrors, Tow Style Mirrors, Cruise Control, Tilt Steering Wheel, Tow Haul Mode, Manual Shift Mode, am/fm/cd/radio, Traction Control, Ac Charging Ports, Vinyl Seats, Cloth Seats, Manual Seat Adjustments.

The Spartan Service truck body comes with 6 locking toll bins, barn style rear doors, cargo light, wide low deck rear step, led taillights, H Beam Storage Rack, Rear-Access Ladder Provides easy access to aluminum ladder rack

The Spartan Service truck body delivers convenience. You will find compartments and custom shelving to keep you organized, and a large, bright workspace that provides shelter from the elements while at the worksite. You can even work standing up inside, and the low-profile design allows easy access to your cargo and equipment.

Our Location :



2017 Chevrolet Express Commercial Cutaway WT CUTAWAY UTILITY BOX TRUCK

T & B Auto Sales - 501-847-2727 - View this car on our website at workvansandtrucks.com/6820254/ebrochure

Installed Options

Interior

- Seating arrangement, driver and front passenger highback bucket includes head restraints and vinyl or cloth trim (Not available with (AJ3) driver-side only frontal air bag.)
- Air conditioning, single-zone manual (Not available with (R6G) air conditioning delete.)
- Seats, front bucket with vinyl trim and head restraints includes inboard armrests (Requires (**W) trim. Not available with SEO (ZP0) delete driver and passenger seats. Includes only driver high-back bucket seat with vinyl trim when ordered with (ZX1) driver-only high-back bucket seating arrangement.)
- Cup holders, 3 on the engine console cover
- Power outlets 2 auxiliary on engine console cover with covers, 12-volt
- Power outlet, 120-volt- Floor covering, Black rubberized-vinyl front
- Instrumentation, analog with speedometer, odometer with trip odometer, fuel level, voltmeter, engine temperature and oil pressure
- Driver Information Center includes fuel range, average speed, oil life, fuel used, ice warning, engine hours, average fuel economy, tachometer and maintenance reminders
- Warning tones, headlamp on and key-in-ignition- Oil life monitor
- Theft-deterrent system, vehicle, PASS-Key III
- Heater and defogger with front and side window defoggers
- Headliner, cloth, over driver and passenger
- Visors, driver and front passenger, cloth, padded
- Assist handles, driver and right-front passenger
- Lighting, interior with dome light and door handle-activated switches

Exterior

- Flasher, heavy duty light emitting diode (LED)- Glass, Solar-Ray light-tinted, all windows
- Mirrors, outside delete (Not available with (5Q7) Upfitter option Blank Sail Panel Delete when ordered with (YF2) Ambulance Package.)
- Wipers, front intermittent wet-arm with pulse washers- License plate kit, front
- Grille, Black composite with single rectangular halogen headlamps (Not available with (ZR7) Chrome Appearance Package.)
- Bumper, front painted Black with step-pad (Deleted when (ZR7) Chrome Appearance

Package is ordered.)

- Wheel configuration, rear, single (Not available with (9N2) 10,050 lbs. (4559 kg.) or (C7N) 12,300 lbs. (5579 kg.) GVWR.)
- Tires, rear LT245/75R16E all-season, blackwall
- Tires, front LT245/75R16E all-season, blackwall
- Wheels, 4 -16" x 6.5" (40.6 cm x 16.5 cm), 8-lug painted steel, heavy-duty (Only available with (R04) single rear wheel configuration.)

Safety

- Seating arrangement, driver and front passenger highback bucket includes head restraints and vinyl or cloth trim (Not available with (AJ3) driver-side only frontal air bag.)
- Air conditioning, single-zone manual (Not available with (R6G) air conditioning delete.)
- Seats, front bucket with vinyl trim and head restraints includes inboard armrests (Requires (**W) trim. Not available with SEO (ZP0) delete driver and passenger seats. Includes only driver high-back bucket seat with vinyl trim when ordered with (ZX1) driver-only high-back bucket seating arrangement.)
- Cup holders, 3 on the engine console cover
- Power outlets 2 auxiliary on engine console cover with covers, 12-volt
- Power outlet, 120-volt- Floor covering, Black rubberized-vinyl front
- Instrumentation, analog with speedometer, odometer with trip odometer, fuel level, voltmeter, engine temperature and oil pressure
- Driver Information Center includes fuel range, average speed, oil life, fuel used, ice warning, engine hours, average fuel economy, tachometer and maintenance reminders
- Warning tones, headlamp on and key-in-ignition- Oil life monitor
- Theft-deterrent system, vehicle, PASS-Key III
- Heater and defogger with front and side window defoggers
- Headliner, cloth, over driver and passenger
- Visors, driver and front passenger, cloth, padded
- Assist handles, driver and right-front passenger
- Lighting, interior with dome light and door handle-activated switches

Mechanical

- Exhaust, aluminized stainless-steel muffler and tailpipe
- Fuel tank capacity, mid-frame and approximately 33 gallons (124.9L)
- Brakes, 4-wheel antilock, 4-wheel disc- Steering, power
- Suspension, rear hypoid drive axle with multi-leaf springs
- Suspension, front independent with coil springs and stabilizer bar
- Incomplete vehicle certification- Frame, ladder-type- Alternator, 150 amps
- Battery, 600 cold-cranking amps maintenance-free with rundown protection and retained accessory power
- Rear wheel drive- Transmission oil cooler, external
- Tow/haul mode selector, instrument panel-mounted
- GVWR, 9900 lbs. (4490 kg) (Includes (R04) single rear wheel configuration. Not available with (R05) dual rear wheel combination. Reference the Engine/Axle page for availability.)
- Body, standard
- Rear axle, 3.42 ratio (Requires (L20) Vortec 4.8L V8 SFI engine or (L96) Vortec 6.0L V8 SFI engine and (C4M) 9900 lbs. (4490 kg) GVWR or (JFF) 10,100 lbs. (4581 kg) GVWR.)
- Transmission, 6-speed automatic, heavy-duty electronically controlled with overdrive and tow/haul mode and internal transmission oil cooler (Reference the Engine/Axle page for availability.)
- Engine, Vortec 4.8L V8 (285 hp [212.5 kW] @ 5400 rpm, 295 lb-ft of torque [398.3 N-m] @ 4600 rpm) (Requires (C4M) 9900 lbs. (4490 kg) GVWR, (9N2) 10,050 lbs. (4559 kg) GVWR or (JFF) 10,100 lbs. (4581 kg) GVWR. Not available with (YF2) Ambulance Package, (YF1) RV Package, (ANC) Shuttle Bus Package or (C7N) 12,300 lbs. (5579 kg) GVWR. Includes external engine oil cooler. Reference the Engine/Axle page for availability.)

Option Packages

Factory Installed Packages

-
ENGINE, VORTEC 4.8L V8
(285 hp [212.5 kW] @ 5400 rpm,
295 lb-ft of torque [398.3 N-m]
@ 4600 rpm)

T & B AUTO SALES



workvansandtrucks.com

501-847-2727

25637 I-30

Bryant, AR 72022

© 2021 AutoRevo - All rights reserved. - Powered by AutoRevo