



## 2011 BMW 135i 6 Speed M-Sport

**Website Price \$17,995**

View this vehicle on our website at [autoparkdallas.com](http://autoparkdallas.com)



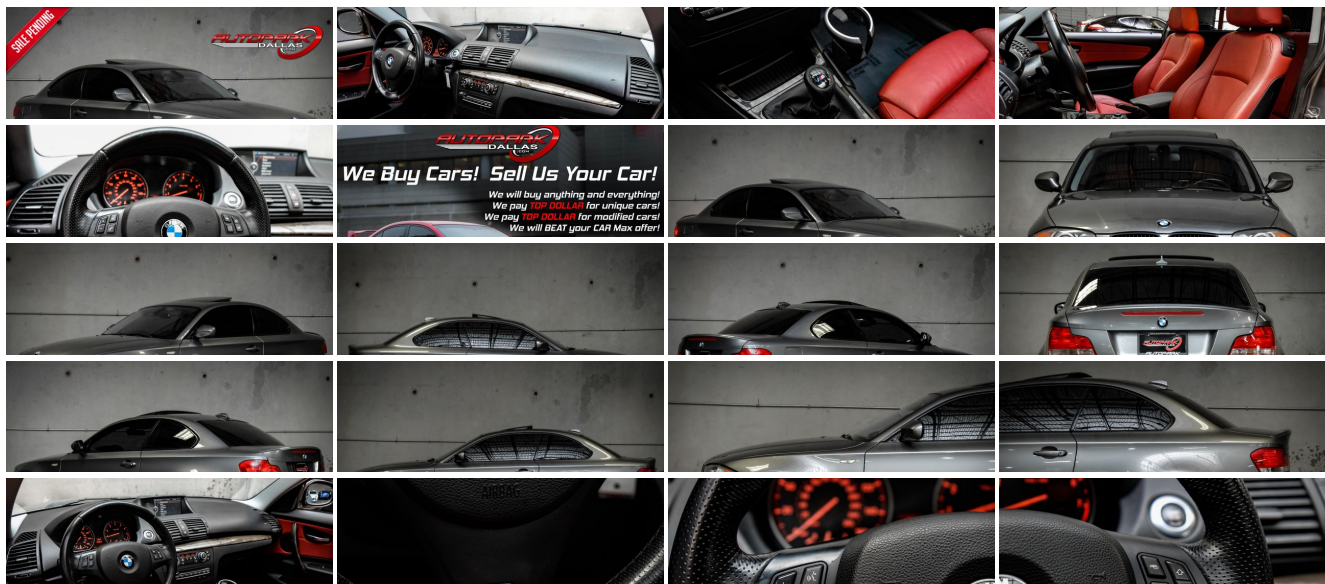
(214) 945-2601

2061 S Stemmons Fwy , Lewisville, TX 75067

Photos

Details

Contact



## Specifications:

<b>Year:</b>	2011
<b>VIN:</b>	<a href="#">WBAUC9C5XBVM10831</a>
<b>Make:</b>	BMW
<b>Model/Trim:</b>	135i 6 Speed M-Sport
<b>Condition:</b>	Pre-Owned
<b>Body:</b>	Coupe
<b>Exterior:</b>	Space Gray Metallic
<b>Engine:</b>	3.0-liter dual overhead cam (DOHC), 24-valve inline turbocharged 300-hp 6-cylinder engine with twin-turbo technology, piezo fuel injection, and Double-VANOS steplessly variable valve timing
<b>Interior:</b>	Coral Red Leather
<b>Transmission:</b>	6-SPEED MANUAL TRANSMISSION
<b>Mileage:</b>	89,643
<b>Drivetrain:</b>	Rear Wheel Drive
<b>Economy:</b>	City 18 / Highway 25

## Vehicle Description

AutoPark Dallas is thrilled to offer you this M-Sport 2011 BMW 135i with 6-Speed for sale! The BMW enjoys a well-deserved reputation for bundling outstanding driving dynamics, excellent quality and undeniable prestige into gorgeous piece of metal. There is no denying that everybody knows the signature look of a BMW, which this 135i doesn't let that reputation down. These are a beautiful piece of machinery that can make anybody feel important on the road and to their peers. If you are looking for a fun sporty little coupe, then come check out this M-Sport BMW 135i parked in our indoor 16,000 Sq Ft Showroom located in Dallas , Texas amongst our inventory of 100+ other Performance / Modified and Luxury cars!

---

### 2011 BMW 135i

\* M-Sport Package !\*

\* Premium Package !\*

\* Navigation Package !\*

Space Gray Metallic Exterior

Coral Red Boston Leather Interior

Hands Free Bluetooth

Navigation w/ Voice Command

Heated Front Row Seats

Powered Sunroof

Cruise Control

Universal Garage Opener

Dual Climate Controls

Power Folding Exterior Mirrors

Driver Seat Memory

Steering Wheel Mounted Controls

CD / AUX / USB Capable

3.0L DOHC 24-Valve DI I6 Twin-Turbocharged Engine

6-Speed Manual Transmission

Rear Wheel Drive

Professionally Detailed!

Well Maintained!

\* Free CarFax Report !\*

AND SO MUCH MORE!!!

---

## Financing is available!

Check out our Payment Calculator to get an estimate on your monthly payments!

OR

Get pre-approved in no time by filling out a credit application on the 'Finance' section of our website!

We also offer MANY different Extended Warranty options!

---

Check out our Google Reviews by \*Clicking\* this LINK!

Referrals and Testimonials is what our business is built on!

---

The team here at AutoPark Dallas, is dedicated to offering a level of customer service not usually found in the automobile industry. Thanks to years of extensive car buying / selling experience, we pursue quality used and new vehicles that are hand-picked from factory sources. Our love for automobiles and dislike of traditional dealership tactics is what motivates us to provide the service we do! The pride we take in continuing this service long after the vehicle has been delivered is what we strive for! Looking forward to making every effort to see that our customer is completely satisfied and a friend for life!

Pre-purchase inspections are always welcomed!

We also offer airport pick-up, competitive financing options, free CarFax Reports, Car Shipping nationwide, Extended Warranty plans, and so much more!

Trade-In(s) are always accepted or sell us your used car (MODIFIED OR NOT)! Please call or text for more information about Trade-Ins or selling your car to us @ (214) 945-2601!

---

#(214) 945-2601

Call or Text **Anytime!**

Se habla Español

**WE BUY CARS!**

WWW.AUTOPARKDALLAS.COM

# Installed Options

## Interior

- Leatherette upholstery
- 2-way power glass moonroof with "one-touch" operation and sliding interior sunshade
- 3-spoke leather-wrapped multi-function sport steering wheel with audio and hands-free phone controls (if so equipped)
- 8-way adjustable front bucket seats, including 2-way headrests
- Automatic climate control includes micro-filter, automatic air recirculation, left/right temperature control, MAX A/C, heat at rest, and recall of individual user settings
- Central locking system with center console switch (leaves gas filler door unlocked), double-lock feature and 2-step unlocking
- Check Control vehicle monitor system with pictogram display, oil status display, and Condition Based Service Indicator
- Coded Driveaway Protection- Cruise Control- Engine Start/Stop button
- Front-door storage compartments- Front-seat center armrest- Front-seat cupholders
- Gray poplar wood trim- Manual height adjustment for front passenger seat
- On-board computer with Check Control provides feedback on the vehicle's operating status: oil level indicator and distance to next service appointment/oil change, as well as other detailed information, such as spark plug and micro-filter status. It also provides travel information travel range on remaining fuel, external temperature, and more
- Power front windows with "one-touch" up/down operation- Rear window defroster
- Service Interval Indicator with miles-to-service readout- Split fold-down rear seats
- Tilt/telescopic steering-wheel column

## Exterior

- Star Spoke (Style 264) light alloy wheels, 18 x 7.5 front, 18 x 8.5 rear; 215/40 front, 245/35 rear run-flat performance tires
- Adaptive Brake Lights- Aerodynamic kit- Black chrome-plated exhaust tips
- Chrome-line exterior trim- Gray-band windshield
- Heated dual power mirrors and heated windshield washer jets
- High-intensity headlight washers
- Rain-sensing windshield wipers and Automatic headlight control- Rear spoiler
- Xenon Adaptive Headlights with auto-leveling, and Cornering Lights

## Safety

- Leatherette upholstery
- 2-way power glass moonroof with "one-touch" operation and sliding interior sunshade
- 3-spoke leather-wrapped multi-function sport steering wheel with audio and hands-free phone controls (if so equipped)
- 8-way adjustable front bucket seats, including 2-way headrests
- Automatic climate control includes micro-filter, automatic air recirculation, left/right temperature control, MAX A/C, heat at rest, and recall of individual user settings
- Central locking system with center console switch (leaves gas filler door unlocked), double-lock feature and 2-step unlocking
- Check Control vehicle monitor system with pictogram display, oil status display, and Condition Based Service Indicator
- Coded Driveaway Protection- Cruise Control- Engine Start/Stop button
- Front-door storage compartments- Front-seat center armrest- Front-seat cupholders
- Gray poplar wood trim- Manual height adjustment for front passenger seat
- On-board computer with Check Control provides feedback on the vehicle's operating status: oil level indicator and distance to next service appointment/oil change, as well as other detailed information, such as spark plug and micro-filter status. It also provides travel information travel range on remaining fuel, external temperature, and more
- Power front windows with "one-touch" up/down operation- Rear window defroster
- Service Interval Indicator with miles-to-service readout- Split fold-down rear seats
- Tilt/telescopic steering-wheel column

## Mechanical

- 3.0-liter dual overhead cam (DOHC), 24-valve inline turbocharged 300-hp 6-cylinder engine with twin-turbo technology, piezo fuel injection, and Double-VANOS steplessly variable valve timing
- 6-speed manual transmission
- Aluminum double-pivot spring and strut-type front suspension- Electronic pwr steering
- Electronic throttle control
- Extensive aluminum componentry, including front suspension components (forged-aluminum lower arms); subframe; steering rack; and brake components
- Five-link fully independent rear suspension in lightweight steel
- Front and rear anti-roll (stabilizer) bars- Rear-wheel drive- Sport suspension calibration
- Twin-tube gas-pressure shock absorbers

# Option Packages

## Factory Installed Packages

### 6-SPEED MANUAL TRANSMISSION

8-WAY PWR FRONT BUCKET SEATS  
-inc: driver memory, 2-way adjustable headrests, exterior mirror memory

\$995

### BMW ASSIST W/BLUETOOTH

-inc: (4) year subscription

\$750

### HEATED FRONT SEATS

\$500

### IPOD & USB ADAPTER

\$400

### LIGHT BURL WALNUT TRIM

### M SPORT PKG

-inc: 18" x 7.5" front & 18" x 8.5" rear double-spoke light alloy wheels (style 261M), P215/40R18 front & 245/35R18 rear performance tires, 8-way manual front sport seats, M sport steering wheel, shadowline exterior trim, Anthracite headliner, increased top speed limiter

\$1,300

### M SPORT STEERING WHEEL-MOUNTED SHIFT PADDLES

### NAVIGATION SYSTEM

-inc: hard drive, HD Radio, real-time traffic info, voice command, cupholders

\$2,100

### PREMIUM PKG

-inc: Boston leather seat trim, universal garage door opener, auto-dimming pwr folding exterior mirrors w/memory, auto-dimming rearview mirror w/digital compass, pwr front seats w/pwr lumbar support, BMW Assist w/(4) year subscription, Bluetooth, illuminated exterior door handles, front/rear reading lights, front footwell illumination, driver/front passenger illuminated vanity mirrors, ambiance interior lighting

\$1,950

### SIRIUS SATELLITE RADIO

-inc: (1) year subscription

\$350

### SMARTPHONE INTEGRATION

\$150

### STANDARD PAINT

### SPACE GRAY METALLIC

\$550

### CORAL RED, BOSTON LEATHER SEAT TRIM

\$1,450

### Option Packages Total

\$10,495

# AUTOPARK

## Dallas

Auto Park Dallas

View this car on our website at [autoparkdallas.com/6816394](https://autoparkdallas.com/6816394)

Website: [autoparkdallas.com](https://autoparkdallas.com)

Phone: (214) 945-2601

Map: 2061 S Stemmons Fwy, Lewisville, TX 75067

