

# 2018 Ram 2500 Tradesman

View this car on our website at [workvansandtrucks.com/6814846/ebrochure](http://workvansandtrucks.com/6814846/ebrochure)

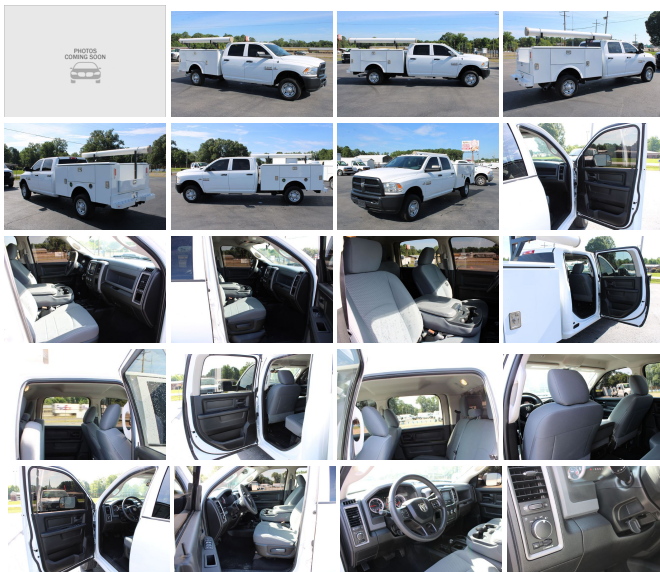


Our Price **\$0**

Retail Value ~~\$49,750~~

## Specifications:

<b>Year:</b>	2018
<b>VIN:</b>	3C6UR5HLXJG388264
<b>Make:</b>	Ram
<b>Stock:</b>	U2476
<b>Model/Trim:</b>	2500 Tradesman
<b>Condition:</b>	Pre-Owned
<b>Body:</b>	Pickup Truck
<b>Exterior:</b>	WHITE
<b>Engine:</b>	ENGINE: 6.7L I6 CUMMINS TURBO DIESEL
<b>Interior:</b>	GREY
<b>Mileage:</b>	13,645
<b>Drivetrain:</b>	4 Wheel Drive



2018 RAM 2500 RAM HD ST CREW CAB 4X4 UTILITY 6.7 CUMMINS ENGINE, AUTOMATIC TRANSMISSION.

This service truck comes with Power Door Locks, Power Mirrors, Tow Mirrors, Power Windows, Cruise Control, Blue Tooth, Phone Controls, Manual Shift Mode, Manual 4X4 Shift lever, am/fm/xm/radio, Trailer Brake Controller, Traction Control Switch, Tow Haul Mode, Exhaust Brake Switch, Charging Ports, Cloth Seats, Vinyl Floor, In Floor Storage, Rear Mounted Tow Hitch.

This Flip top Sthal Service Beds comes with 8 locking tool bins, pass through in storage area, Locking Tail Gate, Led Taillights, Conduit Storage Tube.

Current Oil and Filter Service.

This truck has a dent in the door post on the driver's side.

## Our Location :



2018 Ram 2500 Tradesman

T & B Auto Sales - 501-847-2727 - View this car on our website at [workvansandtrucks.com/6814846/ebrochure](http://workvansandtrucks.com/6814846/ebrochure)

## Installed Options

### Interior

- Driver Seat- Passenger Seat- Vinyl Rear Seat- Manual Tilt Steering Column
- Gauges -inc: Speedometer, Odometer, Voltmeter, Oil Pressure, Engine Coolant Temp, Tachometer, Oil Temperature, Transmission Fluid Temp, Engine Hour Meter and Trip Odometer
- Power Rear Windows- Rear Folding Seat- Front Cupholder
- Cruise Control w/Steering Wheel Controls- Manual Air Conditioning
- HVAC -inc: Underseat Ducts and Console Ducts - Glove Box
- Interior Trim -inc: Metal-Look Instrument Panel Insert and Chrome/Metal-Look Interior Accents
- Full Cloth Headliner- Urethane Gear Shift Knob
- Heavy Duty Vinyl 40/20/40 Split Bench Seat- Day-Night Auto-Dimming Rearview Mirror
- 2 12V DC Power Outlets- Partial Floor Console w/Storage and 2 12V DC Power Outlets
- Fade-To-Off Interior Lighting- Full Vinyl/Rubber Floor Covering
- Cargo Area Concealed Storage- Pickup Cargo Box Lights
- Electronically Controlled Throttle
- Instrument Panel Bin, Dashboard Storage, Driver / Passenger And Rear Door Bins and 2nd Row Underseat Storage
- Delayed Accessory Power
- Power 1st Row Windows w/Driver And Passenger 1-Touch Up/Down - Power Door Locks
- Systems Monitor- Analog Display- Seats w/Vinyl Back Material
- Manual Adjustable Front Head Restraints and Manual Adjustable Rear Head Restraints
- Front Center Armrest- Manual Adjust Seats- 40/20/40 Split Bench Seat
- Sentry Key Engine Immobilizer

### Exterior

- Wheels: 17" x 7.5" Steel Styled- Tires: LT245/70R17E BSW AS- Regular Box Style
- Center Hub- Steel Spare Wheel- Full-Size Spare Tire Stored Underbody w/Crankdown
- Clearcoat Paint- Black Front Bumper- Black Rear Step Bumper
- Black Side Windows Trim and Black Front Windshield Trim - Black Door Handles

- Power Side Mirrors w/Manual Folding- Black Exterior Mirrors
- Exterior Mirrors w/Heating Element- Fixed Rear Window- Variable Intermittent Wipers
- Deep Tinted Glass- Fully Galvanized Steel Panels- Black Grille
- Front License Plate Bracket- Hemi Badge- Tailgate Rear Cargo Access
- Manual Tailgate/Rear Door Lock
- Fully Automatic Aero-Composite Halogen Headlamps w/Delay-Off
- Cargo Lamp w/High Mount Stop Light- Next Generation Engine Controller

## Safety

- Driver Seat- Passenger Seat- Vinyl Rear Seat- Manual Tilt Steering Column
- Gauges -inc: Speedometer, Odometer, Voltmeter, Oil Pressure, Engine Coolant Temp, Tachometer, Oil Temperature, Transmission Fluid Temp, Engine Hour Meter and Trip Odometer
- Power Rear Windows- Rear Folding Seat- Front Cupholder
- Cruise Control w/Steering Wheel Controls- Manual Air Conditioning
- HVAC -inc: Underseat Ducts and Console Ducts - Glove Box
- Interior Trim -inc: Metal-Look Instrument Panel Insert and Chrome/Metal-Look Interior Accents
- Full Cloth Headliner- Urethane Gear Shift Knob
- Heavy Duty Vinyl 40/20/40 Split Bench Seat- Day-Night Auto-Dimming Rearview Mirror
- 2 12V DC Power Outlets- Partial Floor Console w/Storage and 2 12V DC Power Outlets
- Fade-To-Off Interior Lighting- Full Vinyl/Rubber Floor Covering
- Cargo Area Concealed Storage- Pickup Cargo Box Lights
- Electronically Controlled Throttle
- Instrument Panel Bin, Dashboard Storage, Driver / Passenger And Rear Door Bins and 2nd Row Underseat Storage
- Delayed Accessory Power
- Power 1st Row Windows w/Driver And Passenger 1-Touch Up/Down - Power Door Locks
- Systems Monitor- Analog Display- Seats w/Vinyl Back Material
- Manual Adjustable Front Head Restraints and Manual Adjustable Rear Head Restraints
- Front Center Armrest- Manual Adjust Seats- 40/20/40 Split Bench Seat
- Sentry Key Engine Immobilizer

## Mechanical

- Engine: 5.7L V8 HEMI VVT- Transmission: 6-Speed Automatic (66RFE)- 3.73 Axle Ratio
- GVWR: 9,000 lbs- 50 State Emissions
- Transmission w/Driver Selectable Mode, Sequential Shift Control and Oil Cooler
- Manual Transfer Case- Part-Time Four-Wheel Drive
- 730CCA Maintenance-Free Battery w/Run Down Protection- 160 Amp Alternator
- Front Bumper Sight Shields- Tip Start
- Class V Towing Equipment -inc: Hitch and Trailer Sway Control - Trailer Wiring Harness
- 2200# Maximum Payload- HD Shock Absorbers- Front Anti-Roll Bar- HD Suspension
- Hydraulic Power-Assist Steering- 32 Gal. Fuel Tank- Single Stainless Steel Exhaust
- Auto Locking Hubs- Multi-Link Front Suspension w/Coil Springs
- Multi-Link Rear Suspension w/Coil Springs
- 4-Wheel Disc Brakes w/4-Wheel ABS, Front And Rear Vented Discs, Brake Assist and Hill Hold Control

## Option Packages

### Factory Installed Packages

#### ENGINE: 6.7L I6 CUMMINS TURBO DIESEL

-inc: Selective Catalytic Reduction (Urea), 180 Amp Alternator, Cummins Turbo Diesel Badge, Tow Hooks, Current Generation Engine Controller, Diesel Exhaust Brake, GVWR: 10,000 lbs, RAM Active Air

\$9,300

Option Packages Total

\$9,300

---

# T & B AUTO SALES



[workvansandtrucks.com](http://workvansandtrucks.com)

501-847-2727

25637 I-30

Bryant, AR 72022

© 2021 AutoRevo - All rights reserved. - Powered by AutoRevo