



2017 Ford Super Duty F-250 XLT 4x4

Texas Diesel Store 254-247-2172

SALES PRICE \$37,488

View this vehicle on our website at texasdieselstore.com

Texas Diesel Store.com

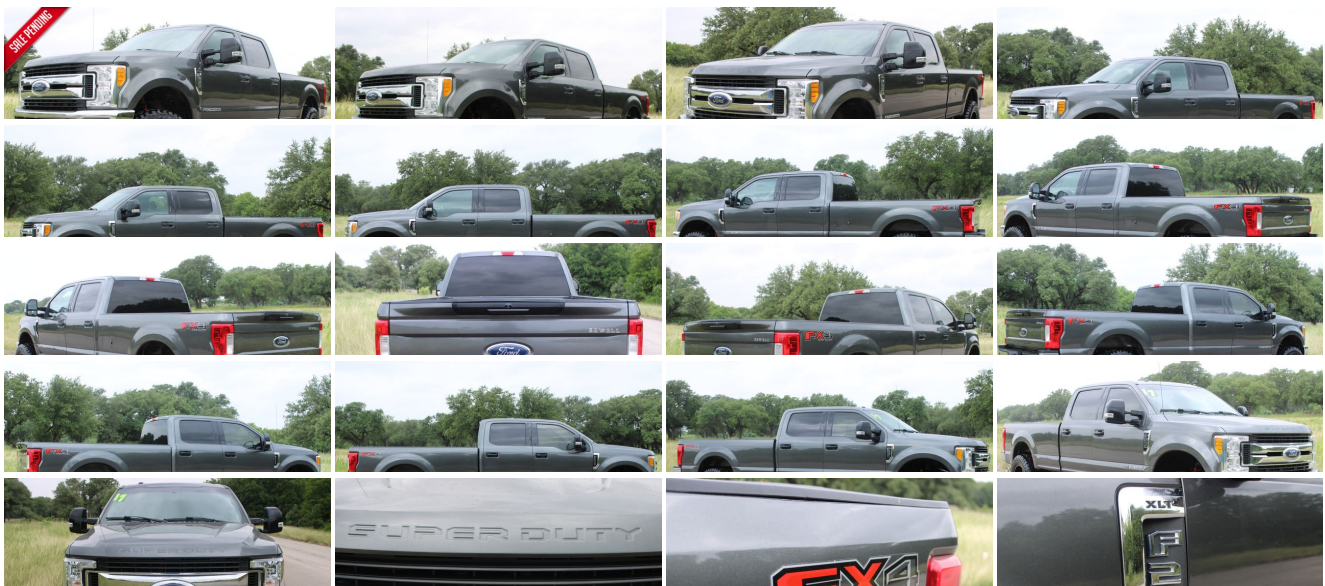
[254-247-2172](tel:254-247-2172)

5806 S General Bruce Dr , Temple, TX 76502

Photos

Details

Contact



Specifications:

Year:	2017
VIN:	1FT7W2BT7HED31320
Make:	Ford
Model/Trim:	Super Duty F-250 XLT 4x4
Condition:	Pre-Owned
Body:	Pickup Truck
Exterior:	Magnetic Metallic
Engine:	ENGINE: 6.7L 4V OHV POWER STROKE V8 TURBO DIESEL B20
Interior:	Gray Cloth
Transmission:	AUTOMATIC
Mileage:	90,154
Drivetrain:	4 Wheel Drive

Vehicle Description

www.TEXASDIESELSTORE.com

CALL OR TEXT TODAY @ [254-247-2172](tel:254-247-2172)

5806 S GENERAL BRUCE DR TEMPLE TEXAS 76502

2017 FORD F-250 CREW CAB - XLT 4X4

FX4 OFF-ROAD PACKAGE

6.7L POWERSTROKE TURBO DIESEL

AUTOMATIC TRANSMISSION

4 WHEEL DRIVE

ONLY 90K MILES!

20 INCH MOTO METAL WHEELS

NEW 37 INCH COURSER M/T TIRES

FACTORY FORD GOOSENECK HITCH

POWER WINDOWS-LOCKS-MIRRORS-SEAT

1-OWNER CARFAX!

NICE! SEATS 6

CALL OR TEXT FOR MORE PICTURES OR VIDEOS!!!

WE TAKE ANY CAR, TRUCK, SUVS FOR TRADE. CONTACT US WITH YOUR VEHICLE INFO

FOR A FREE APPRAISAL! IN THE MARKET FOR A NEW VEHICLE? LET US BID YOUR TRADE!

FREE SHIPPING IN THE STATE OF TEXAS!!! WE ALSO OFFER PICK UP FROM THE AUSTIN/KILLEEN AIRPORT! FLY IN & DRIVE HOME WITH UP TO A \$500 REIMBURSEMENT IN AIRFARE FOR ON PERSON!

CALL OR TEXT TODAY @ [254-247-2172](tel:254-247-2172)

2017 Ford F-250 Crew Cab XLT 4x4 with the FX4 OFF-ROAD package and the powerful 6.7L POWERSTROKE Turbo Diesel and automatic transmission! Only 90k miles!! The truck is a CREW CAB long bed truck! The interior is clean and comfortable with cloth seats and vinyl floor for easy cleaning! This truck runs and drives really well! Very quiet engine! All stock! This Ford is nice and is capable of seating 6 people comfortably! It comes equipped with a factory gooseneck hitch. This truck will turn heads everywhere you go! CLEAN 1-OWNER CARFAX! Recently serviced and inspected and ready to hit the road!

We also offer extremely competitive Financing options or can work with your local bank/credit union. There is a free credit application on our website. We work hard to have the best financing options available with the most competitive rates. Click the link to fill out a Credit Application: <http://texasdieselstore.com/financing>

CONTACT US TODAY @ [254-247-2172](tel:254-247-2172)

*Shipping and reimbursements are subject to the completion of the transaction at our designated list price. Airfare reimbursements will be refunded at the completion of the deal as long as an airfare receipt is provided for our records.

Installed Options

Interior

- Cloth 40/20/40 Split Bench Seat -inc: 20% locking center under-seat storage, center armrest, cupholder, storage, 4-way adjustable driver/passenger headrests and driver's side manual lumbar
- Driver And Passenger Visor Vanity Mirrors
- Full Carpet Floor Covering -inc: Carpet Front And Rear Floor Mats
- Gauges -inc: Speedometer, Odometer, Oil Pressure, Engine Coolant Temp, Tachometer, Transmission Fluid Temp, Engine Hour Meter, Trip Odometer and Trip Computer
- Perimeter Alarm- Power 1st Row Windows w/Driver And Passenger 1-Touch Up/Down
- Power Door Locks- Power Rear Windows
- Remote Keyless Entry w/Integrated Key Transmitter, Illuminated Entry and Panic Button
- Securilock Anti-Theft Ignition (pats) Engine Immobilizer- Trip Computer
- 2 Seatback Storage Pockets- 3 12V DC Power Outlets
- 4-Way Driver Seat -inc: Manual Recline and Fore/Aft Movement
- 4-Way Passenger Seat -inc: Manual Recline and Fore/Aft Movement
- 60-40 Folding Split-Bench Front Facing Fold-Up Cushion Rear Seat - Air Filtration
- Analog Display- Cruise Control w/Steering Wheel Controls- Day-Night Rearview Mirror
- Delayed Accessory Power- Fade-To-Off Interior Lighting- Front And Rear Map Lights
- Full Cloth Headliner- Full Overhead Console w/Storage and 3 12V DC Power Outlets
- HVAC -inc: Underseat Ducts- Illuminated Locking Glove Box
- Instrument Panel Covered Bin, Dashboard Storage, Driver / Passenger And Rear Door Bins and Locking 2nd Row Underseat Storage
- Interior Trim -inc: Metal-Look Instrument Panel Insert and Chrome Interior Accents
- Manual Adjustable Rear Head Restraints- Manual Air Conditioning
- Manual Tilt/Telescoping Steering Column- Outside Temp Gauge- Rear Cupholder
- Systems Monitor- Underhood And Pickup Cargo Box Lights- Urethane Gear Shift Knob

Exterior

Option Packages

Factory Installed Packages

ENGINE: 6.7L 4V OHV POWER STROKE V8 TURBO DIESEL B20	
-inc: 4 valve OHV, manual push-button engine-exhaust braking and intelligent oil-life monitor, 48 Gallon Fuel Tank, 175 Amp Heavy Duty Alternator, 3.31 Axle Ratio, Dual 78-AH 750 CCA Batteries	\$8,795

Option Packages Total	\$8,795
-----------------------	---------

- Black Power Heated Side Mirrors w/Convex Spotter, Manual Folding and Turn Signal Indicator
- Full-Size Spare Tire Stored Underbody w/Crankdown
- Fully Automatic Aero-Composite Halogen Daytime Running Lights Preference Setting Headlamps w/Delay-Off
- Privacy Glass- Tailgate/Rear Door Lock Included w/Power Door Locks
- Tires: LT275/65R18E BSW A/S- Variable Intermittent Wipers
- Wheels: 18" Sparkle Silver Painted Cast Aluminum -inc: bright hub covers/center ornaments
- Aluminum Panels- Black Door Handles- Black Grille w/Chrome Accents
- Black Side Windows Trim and Black Front Windshield Trim
- Cargo Lamp w/High Mount Stop Light
- Chrome Front Bumper w/Body-Colored Rub Strip/Fascia Accent and 2 Tow Hooks
- Chrome Rear Step Bumper- Clearcoat Paint- Fixed Rear Window
- Front License Plate Bracket- Manual Extendable Trailer Style Mirrors
- Perimeter/Approach Lights- Regular Box Style- Steel Spare Wheel
- Tailgate Rear Cargo Access

Safety

- Cloth 40/20/40 Split Bench Seat -inc: 20% locking center under-seat storage, center armrest, cupholder, storage, 4-way adjustable driver/passenger headrests and driver's side manual lumbar
- Driver And Passenger Visor Vanity Mirrors
- Full Carpet Floor Covering -inc: Carpet Front And Rear Floor Mats
- Gauges -inc: Speedometer, Odometer, Oil Pressure, Engine Coolant Temp, Tachometer, Transmission Fluid Temp, Engine Hour Meter, Trip Odometer and Trip Computer
- Perimeter Alarm- Power 1st Row Windows w/Driver And Passenger 1-Touch Up/Down
- Power Door Locks- Power Rear Windows
- Remote Keyless Entry w/Integrated Key Transmitter, Illuminated Entry and Panic Button
- Securilock Anti-Theft Ignition (pats) Engine Immobilizer- Trip Computer
- 2 Seatback Storage Pockets- 3 12V DC Power Outlets
- 4-Way Driver Seat -inc: Manual Recline and Fore/Aft Movement
- 4-Way Passenger Seat -inc: Manual Recline and Fore/Aft Movement
- 60-40 Folding Split-Bench Front Facing Fold-Up Cushion Rear Seat - Air Filtration
- Analog Display- Cruise Control w/Steering Wheel Controls- Day-Night Rearview Mirror
- Delayed Accessory Power- Fade-To-Off Interior Lighting- Front And Rear Map Lights
- Full Cloth Headliner- Full Overhead Console w/Storage and 3 12V DC Power Outlets
- HVAC -inc: Underseat Ducts- Illuminated Locking Glove Box
- Instrument Panel Covered Bin, Dashboard Storage, Driver / Passenger And Rear Door Bins and Locking 2nd Row Underseat Storage
- Interior Trim -inc: Metal-Look Instrument Panel Insert and Chrome Interior Accents
- Manual Adjustable Rear Head Restraints- Manual Air Conditioning
- Manual Tilt/Telescoping Steering Column- Outside Temp Gauge- Rear Cupholder
- Systems Monitor- Underhood And Pickup Cargo Box Lights- Urethane Gear Shift Knob

Mechanical

- Class V Towing Equipment -inc: Hitch, Brake Controller and Trailer Sway Control
- Engine: 6.2L 2-Valve SOHC EFI NA V8 Flex-Fuel
- Transmission: TorqShift-G 6-Spd Auto w/SelectShift- 3.73 Axle Ratio
- 3230# Maximum Payload
- 4-Wheel Disc Brakes w/4-Wheel ABS, Front And Rear Vented Discs, Brake Assist and Hill Hold Control
- 48 Gal. Fuel Tank- 50-State Emissions System
- 78-Amp/Hr 750CCA Maintenance-Free Battery w/Run Down Protection
- Firm Suspension- Front Anti-Roll Bar- Front Suspension w/Coil Springs
- GVWR: 10,000 lb Payload Package- HD Shock Absorbers
- Hydraulic Power-Assist Steering- Leaf Rear Suspension w/Leaf Springs
- Manual Locking Hubs- Manual Transfer Case- Part-Time Four-Wheel Drive
- Single Stainless Steel Exhaust- Trailer Wiring Harness- Transmission w/Oil Cooler

All vehicles are sold As-Is, Where-Is unless otherwise noted. No warranties implied or expressed. Customer is responsible for inspecting the vehicle prior to purchase.

Texas Diesel Store.com

Texas Diesel Store.com

View this car on our website at texasdieselstore.com/6814270

Website: texasdieselstore.com

Phone: [254-247-2172](tel:254-247-2172)

Map: 5806 S General Bruce Dr, Temple, TX 76502

