



2018 Chevrolet Silverado 1500 LT

Our Price \$32,995

View this vehicle on our website at wheelsunltd.com

Wheels Unlimited

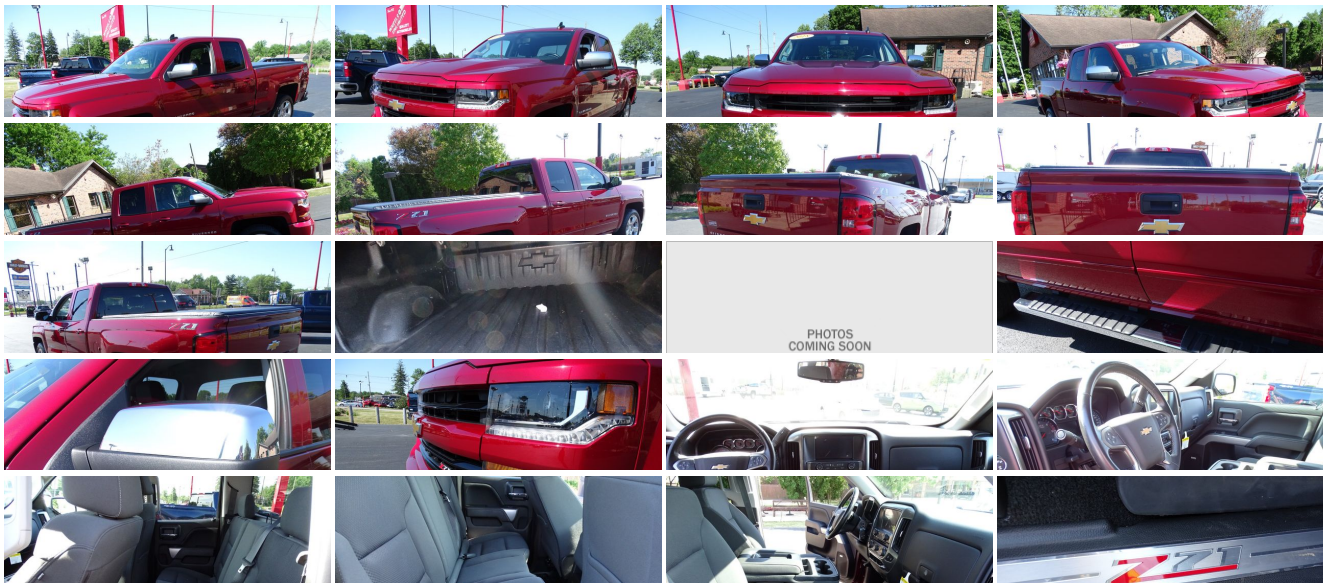
(219) 464-3736

1151 Morthland Drive , Valparaiso, Indiana 46385

Photos

Details

Contact



Specifications:

Year:	2018
VIN:	1GCVKREC8JZ369788
Make:	Chevrolet
Stock:	20-027
Model/Trim:	Silverado 1500 LT
Condition:	Pre-Owned
Body:	Pickup Truck
Exterior:	Cajun Red Tintcoat
Engine:	ENGINE, 5.3L ECOTEC3 V8 WITH ACTIVE FUEL MANAGEMENT, DIRECT INJECTION AND VARIABLE VALVE TIMING
Interior:	Jet Black Cloth
Transmission:	TRANSMISSION, 6-SPEED AUTOMATIC, ELECTRONICALLY CONTROLLED
Mileage:	28,057
Drivetrain:	4 Wheel Drive
Economy:	City 16 / Highway 22

Vehicle Description

Installed Options

Interior

- Air conditioning, single-zone- Assist handle, front passenger on A-pillar
- Cruise control, electronic with set and resume speed, steering wheel-mounted
- Door locks, power
- Driver Information Center, 4.2-inch diagonal color display includes driver personalization, warning messages and vehicle information
- Floor covering, color-keyed carpeting with rubberized vinyl floor mats (Double Cab and Crew Cabs include second row floor mats)
- Instrumentation, 6-gauge cluster featuring speedometer, fuel level, engine temperature, tachometer, voltage and oil pressure
- Remote Keyless Entry, with 2 transmitters
- Seat, rear 60/40 folding bench (folds up), 3-passenger (includes child seat top tether anchor) (Not available on Regular Cab models.)
- Seats, front 40/20/40 split-bench, 3-passenger, available in cloth or leather includes driver and front passenger recline with outboard head restraints and center fold-down armrest with storage. Also includes manually adjustable driver lumbar, lockable storage compartment in seat cushion, and storage pockets. (Leather with (KA1) heated seat cushions and seat backs is an available extra charge option with (H1Y) Jet Black leather appointed interior trim and requires (PCM) LT Convenience Package, (PDA) Texas Edition or (PDU) All Star Edition. Includes (AG1) driver 10-way power seat-adjuster with (PCM) LT Convenience Package, (PDA) Texas Edition or (PDU) All Star Edition. When (G1K) Deep Ocean Blue Metallic or (GPA) Graphite Metallic exterior color is ordered on C*1**53 Double Cab models, requires (H0U) Jet Black cloth interior.)
- Steering column, Tilt-Wheel, manual with theft-deterrent locking feature
- Steering wheel audio controls
- Steering wheel, leather-wrapped with audio and cruise controls
- Visors, driver and front passenger illuminated vanity mirrors
- Windows, power front and rear with driver express up and down and express down on all other windows

Exterior

- Tires, P265/65R18 all-terrain, blackwall- Wheel, full-size spare, 17" (43.2 cm) steel
- Active Aero Shutters, front- Bumper, front body-color
- Bumper, rear body-color, with CornerSteps- CornerStep, rear bumper
- Door handles, body-color (With (WGQ) Redline Edition or (WJP) Midnight Edition door handles will be Black.)
- Fog lamps, thin profile LED- Glass, deep-tinted- Grille surround, body color
- Headlamp bezels, body-color
- Headlamps, high intensity discharge (HID) projector-beam with LED signature DRL
- Lamps, cargo area, cab mounted with switch on center switch bank
- Mirror caps, body-color (With (WGQ) Redline Edition or (WJP) Midnight Edition mirror caps will be Black.)

Option Packages

Factory Installed Packages

ENGINE, 5.3L ECOTEC3 V8 WITH ACTIVE FUEL MANAGEMENT, DIRECT INJECTION AND VARIABLE VALVE TIMING

includes aluminum block construction (355 hp [265 kW] @ 5600 rpm, 383 lb-ft of torque [518 Nm] @ 4100 rpm; more than 300 lb-ft of torque from 2000 to 5600 rpm)	\$1,195
---	----------------

TRANSMISSION, 6-SPEED AUTOMATIC, ELECTRONICALLY CONTROLLED

with overdrive and tow/haul mode. Includes Cruise Grade Braking and Powertrain Grade Braking

AIR CONDITIONING, DUAL-ZONE AUTOMATIC CLIMATE CONTROL

ALL STAR EDITION

for Crew Cab and Double Cab,	\$1,285
------------------------------	----------------

BOSE SOUND WITH 6 SPEAKER SYSTEM

(7 speaker system including subwoofer when ordered with bucket seats)	\$500
---	--------------

COOLING, AUXILIARY EXTERNAL TRANSMISSION OIL COOLER

DEFOGGER, REAR-WINDOW ELECTRIC

LPO, ASSIST STEPS - 6" CHROMED RECTANGULAR

\$750

LPO, BED LINER

\$355

LPO, BLACK BOW-TIE EMBLEMS, FRONT AND REAR

- Mirrors, outside heated power-adjustable (includes driver's side spotter mirror) (Body-color.)
- Moldings, bodyside, body color- Recovery hooks, front, frame-mounted, black
- Remote Locking Tailgate- Tailgate and bed rail protection cap, top
- Tailgate, EZ-Lift and Lower
- Tire carrier lock, keyed cylinder lock that utilizes same key as ignition and door
- Tire, spare P265/70R17 all-season, blackwall
- Wheelhouse liners, rear (Requires Crew Cab or Double Cab model.)
- Wheels, 18" x 8.5" (45.7 cm x 21.6 cm) bright-machined aluminum
- Z71 Package, Off-Road (Requires 4WD model.), includes monotube Rancho brand shocks, (K47) air cleaner, (JHD) Hill Descent Control, (NZZ) underbody shield and (V76) recovery hooks. Also includes brushed metal Z71 door sill plate, unique Z71 gauge cluster, unique finish interior trim plates, unique lower bumper appearance, unique grille design with Z71 badge and Z71 pickup box decals (Includes (Z82) Trailing Package, (G80) locking rear differential and (RD1) 18" bright machined wheels and (RBX) 18" tires. Upgradeable to (RD4) 20" polished-aluminum wheels or 22" LPO wheels. (RD1) 18" bright machined wheels will be replaced with (RX1) 22" LPO wheels when (PDD) Local Market Package (Double Cab), LPO or (PDD) Local Market Package (Crew Cab), LPO is ordered.)

Safety

- Air conditioning, single-zone- Assist handle, front passenger on A-pillar
- Cruise control, electronic with set and resume speed, steering wheel-mounted
- Door locks, power
- Driver Information Center, 4.2-inch diagonal color display includes driver personalization, warning messages and vehicle information
- Floor covering, color-keyed carpeting with rubberized vinyl floor mats (Double Cab and Crew Cabs include second row floor mats)
- Instrumentation, 6-gauge cluster featuring speedometer, fuel level, engine temperature, tachometer, voltage and oil pressure
- Remote Keyless Entry, with 2 transmitters
- Seat, rear 60/40 folding bench (folds up), 3-passenger (includes child seat top tether anchor) (Not available on Regular Cab models.)
- Seats, front 40/20/40 split-bench, 3-passenger, available in cloth or leather includes driver and front passenger recline with outboard head restraints and center fold-down armrest with storage. Also includes manually adjustable driver lumbar, lockable storage compartment in seat cushion, and storage pockets. (Leather with (KA1) heated seat cushions and seat backs is an available extra charge option with (H1Y) Jet Black leather appointed interior trim and requires (PCM) LT Convenience Package, (PDA) Texas Edition or (PDU) All Star Edition. Includes (AG1) driver 10-way power seat-adjuster with (PCM) LT Convenience Package, (PDA) Texas Edition or (PDU) All Star Edition. When (G1K) Deep Ocean Blue Metallic or (GPA) Graphite Metallic exterior color is ordered on C*1**53 Double Cab models, requires (H0U) Jet Black cloth interior.)
- Steering column, Tilt-Wheel, manual with theft-deterrent locking feature
- Steering wheel audio controls
- Steering wheel, leather-wrapped with audio and cruise controls
- Visors, driver and front passenger illuminated vanity mirrors
- Windows, power front and rear with driver express up and down and express down on all other windows

Mechanical

- Engine, 4.3L FlexFuel EcoTec3 V6 with Active Fuel Management, Direct Injection and Variable Valve Timing includes aluminum block construction with (FHS) E85 FlexFuel capability, capable of running on unleaded or up to 85% ethanol (285 hp [212 kW] @ 5300 rpm, 305 lb-ft of torque [413 Nm] @ 3900 rpm) (Includes (FHS) E85 FlexFuel capability. Not available on C*15743 models. On 1LT and 2LT models not available with (G1K) Deep Ocean Blue Metallic or (GPA) Graphite Metallic on C*1**53 Double Cab models.)
- Air cleaner, high-capacity- Alternator, 150 amps
- Battery, heavy-duty 730 cold-cranking amps/70 Amp-hr, maintenance-free with rundown protection and retained accessory power
- Brakes, 4-wheel disc with DURALIFE rotors, 4-wheel antilock- Capless Fuel Fill
- Cooling, external engine oil cooler- Differential, heavy-duty locking rear
- Exhaust, aluminized stainless-steel muffler and tailpipe- Four wheel drive
- Frame, fully-boxed, hydroformed front section
- GVWR, 7100 lbs. (3221 kg) (Requires Crew Cab or Double Cab 4WD models and (LV3) 4.3L EcoTec3 V6 engine.)
- Hill Descent Control- Pickup box
- Rear axle, 3.42 ratio (Standard on 4WD (LV3) 4.3L EcoTec3 V6 engine. Available with (L83) 5.3L EcoTec3 V8 engine.)
- Steering, Electric Power Steering (EPS) assist, rack-and-pinion
- Transfer case, electronic Autotrac with rotary dial control (Included with 4WD models only.)
- Transmission, 6-speed automatic, electronically controlled with overdrive and tow/haul mode. Includes Cruise Grade Braking and Powertrain Grade Braking
- Underbody shield, transfer case protection

\$200

LPO, CHROME ESSENTIALS PACKAGE

includes (VQY) chrome recovery hooks, LPO and (VQZ) polished exhaust tip, LPO

\$295

LT PLUS PACKAGE

includes (UG1) Universal Home Remote, (UD7) Rear Park Assist, (JF4) power adjustable pedals, (A48) rear sliding power window, (C49) rear-window defogger

\$1,040

POWER OUTLET, 110-VOLT AC

REMOTE VEHICLE STARTER SYSTEM

Includes (UTJ) Theft-deterrent system.)

SEAT ADJUSTER, DRIVER 10-WAY POWER

SEATING, HEATED DRIVER AND FRONT PASSENGER

Only available on Crew Cab and Double Cab models.

\$250

STEERING COLUMN, MANUAL TILT AND TELESCOPING

TRAILER BRAKE CONTROLLER, INTEGRATED

\$275

REAR AXLE, 3.42 RATIO

CAJUN RED TINTCOAT

\$495

LT PREFERRED EQUIPMENT GROUP

includes standard equipment

AUDIO SYSTEM, CHEVROLET MYLINK RADIO WITH 8" DIAGONAL COLOR TOUCH-SCREEN, AM/FM STEREO

with seek-and-scan and digital clock, includes Bluetooth streaming audio for music and select phones; USB ports; auxiliary jack; voice-activated technology for radio and phone; and Shop with the ability to browse, select and install apps to your vehicle. Apps include Pandora, iHeartRadio, The Weather Channel and more.

DARK ASH WITH JET BLACK INTERIOR ACCENTS, CLOTH SEAT TRIM

SEATS, FRONT CLOTH BUCKET WITH (KA1) HEATED SEAT CUSHIONS AND SEAT BACKS

includes 10-way power driver and 6-way power front passenger seat adjusters, including driver/front passenger power recline and driver/front passenger power lumbar. Also includes adjustable head restraints, (D07) floor console, storage pockets and (K4C) Wireless charging.

\$1,275

WHEELS, 20" X 9" (50.8 CM X 22.9 CM) POLISHED-ALUMINUM

\$1,295

Option Packages Total

\$9,210

Wheels Unlimited

View this car on our website at wheelsunltd.com/6810001

Website: wheelsunltd.com

Phone: (219) 464-3736

Map: 1151 Morthland Drive, Valparaiso, Indiana 46385

