

# 2007 Chevrolet Tahoe LT Z71

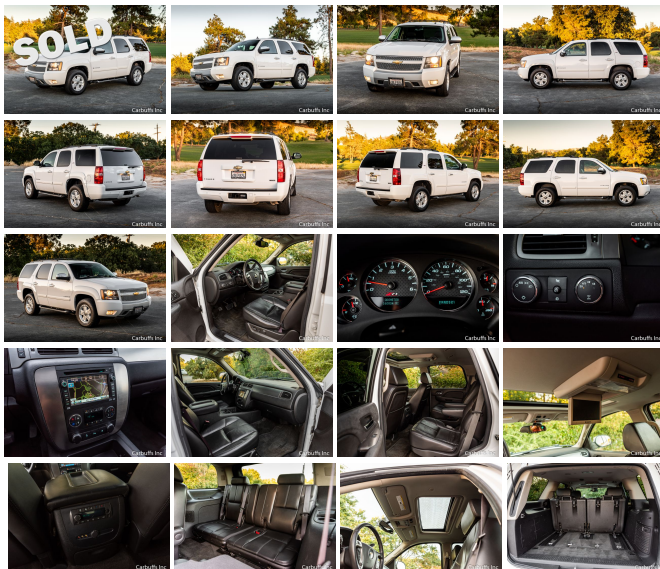
View this car on our website at [carbuffs.com/6807528/ebrochure](http://carbuffs.com/6807528/ebrochure)



Our Price **\$0**

## Specifications:

<b>Year:</b>	2007
<b>VIN:</b>	1GNFK13067R362692
<b>Make:</b>	Chevrolet
<b>Model/Trim:</b>	Tahoe LT Z71
<b>Condition:</b>	Pre-Owned
<b>Body:</b>	SUV
<b>Exterior:</b>	Summit White
<b>Engine:</b>	ENGINE, VORTEC 5.3L V8 SFI FLEX-FUEL WITH ACTIVE FUEL MANAGEMENT,
<b>Interior:</b>	Ebony Leather
<b>Transmission:</b>	TRANSMISSION, 4-SPEED AUTOMATIC, ELECTRONICALLY CONTROLLED
<b>Mileage:</b>	160,800
<b>Drivetrain:</b>	4 Wheel Drive
<b>Economy:</b>	City 15 / Highway 20



Rare Z71. Excellent color combination of summit white exterior with ebony leather interior. Smooth and powerful 5.3L Vortec V8 engine with automatic transmission. Factory navigation with Bose premium sound. Power moonroof. Rearview camera and parking sensors. Power rear liftgate. 2nd row bucket seats plus third row seating. Rare Z71 suspension package includes: (Includes off-road jounce bumpers, specially-tuned springs and gas-charged monotube shocks, (G80) heavy-duty locking rear differential, (B71) front and rear wheel flares, (N87) 4-18" x 8" (45.7 cm x 20.3 cm) aluminum wheels, (QXN) P265/65R18 on-/off-road, blackwall tires, (NZZ) Skid Plate Package, (BVV) tubular assist steps and (K47) high-capacity air cleaner. Four wheel drive. 160k miles. Clean title. Runs and drives excellent.

## Our Location :



2007 Chevrolet Tahoe LT Z71

Carbuffs - (925) 671-2010 - View this car on our website at [carbuffs.com/6807528/ebrochure](http://carbuffs.com/6807528/ebrochure)

## Installed Options

### Interior

- Audio system, AM/FM stereo with MP3 compatible CD player, seek-and-scan, digital clock, auto-tone control, Radio Data System (RDS), speed-compensated volume and TheftLock
- OnStar, 1-year of Safe and Sound plan. Includes Automatic Notification of Air Bag Deployment, Stolen Vehicle Location Assistance, Emergency Services, Roadside Assistance, Remote Door Unlock, OnStar Vehicle Diagnostics, Hands-Free Calling, AccidentAssist, and Remote Horn & Lights (Not available with order type FDR. OnStar services require vehicle electrical system (including battery), wireless service and GPS satellite signals to be available and operating for features to function properly. OnStar acts as a link to existing emergency service providers. OnStar Vehicle Diagnostics available on most 2004 MY and newer GM vehicles. Diagnostic capability varies by model. Visit [onstar.com](http://onstar.com) for system limitations and details.
- Air conditioning, dual-zone manual climate control with individual climate settings for driver and right-front passenger
- Air conditioning, rear auxiliary- Assist handles, front passenger and second row outboard
- Audio system controls, rear with 2 headphone jacks (headphones not included), power outlet and controls for volume, station selection and media
- Audio system feature, 8-speaker system
- Cargo mat (Not available when (AS3) 3-passenger, third row 50/50 split-bench seat or (AW2) 2-passenger, third row 50/50 split-bench seat is ordered.
- Cargo shade (Not available when (AS3) 3-passenger, third row 50/50 split-bench seat or (AW2) 2-passenger, third row 50/50 split-bench seat is ordered.
- Console, floor with storage area, cup holders and integrated second row audio controls
- Console, overhead mini with map lights (Includes sunroof controls when (CF5) power sunroof is ordered.)
- Cruise control, electronic with set and resume speed - Defogger, rear-window electric
- Door locks, power programmable with lockout protection
- Floor covering, color-keyed carpeting
- Floor mats, color-keyed carpeted front and second row, removable - Headliner, cloth
- Heater, rear auxiliary with rear passenger heating ducts
- Instrumentation, analog with speedometer, odometer with trip odometer, fuel level, voltmeter, engine temperature, oil pressure and tachometer
- Lighting, interior with dome light, driver- and passenger-side door switch with delayed entry

## Option Packages

### Factory Installed Packages

#### ENGINE, VORTEC 5.3L V8 SFI FLEX-FUEL WITH ACTIVE FUEL MANAGEMENT,

capable of running on unleaded or up to 85% ethanol (320 hp [238.6 kW] @ 5200 rpm, 340 lb-ft of torque [459.0 N-m] @ 4200 rpm), iron block

#### TRANSMISSION, 4-SPEED AUTOMATIC, ELECTRONICALLY CONTROLLED

with overdrive and tow/haul mode

#### AIR BAGS, HEAD CURTAIN SIDE-IMPACT, FIRST AND SECOND ROW OUTBOARD SEATING POSITIONS

with rollover sensor, includes third row seating positions with (AS3) 3-passenger third row 50/50 split-bench seat or (AW2) 2-passenger third row 50/50 split-bench seat

\$350

#### DOOR HANDLES, SATIN CHROME PULL WITH COLOR-KEYED SURROUND

#### MIRRORS, OUTSIDE HEATED POWER-ADJUSTABLE, POWER-FOLDING AND DRIVER-SIDE AUTO-DIMMING,

with integrated turn signal indicators, ground illumination and curb-tilt

#### PEDALS, POWER-ADJUSTABLE FOR ACCELERATOR AND BRAKE

\$120

- feature, cargo lights, door handle or Remote Keyless Entry-activated illuminated entry and map lights in front and second seat positions
- Mirror, inside rearview auto-dimming with 8-point compass and outside temperature display
- Power outlets, 5 auxiliary, 12-volt, includes 2 on the instrument panel, 1 in the cargo area, 1 inside center console and 1 at back of console
- Remote vehicle starter prep package, includes Remote Keyless Entry
- Seat adjuster, driver power
- Seats, front bucket with Custom Cloth, 6-way power driver seat adjuster, outboard adjustable head restraints, floor console and rear storage pockets
- Seats, second row 60/40 split-folding bench with Custom Cloth, 3-passenger with center armrest
- Steering column, Tilt-Wheel, adjustable with brake/transmission shift interlock
- Steering wheel controls, mounted audio, Driver Information Center and cruise controls, includes Driver Information Center controls on instrument panel to right of steering wheel
- Steering wheel, leather-wrapped Theft-deterrent system, vehicle, PASS-Key III
- Tire Pressure Monitoring System (does not apply to spare tire)
- Visors, driver and front passenger illuminated vanity mirrors, padded with cloth trim, extends on rod
- Warning tones, headlamp on, key-in-ignition, driver and right-front passenger safety belt unfasten and turn signal on
- Windows, power with driver Express-Down and lockout features

## Exterior

- Assist steps, Black, mounted between front and rear wheels
- Daytime Running Lamps, with automatic exterior lamp control
- Door handles, color-keyed (with 2LT or 3LT Preferred Equipment Group Not available with (Z71) Off-Road Suspension Package.)
- Fascia, front color-keyed- Fascia, rear color-keyed- Fog lamps, front round
- Glass, Solar-Ray deep-tinted (all windows except light-tinted glass on windshield and driver- and front passenger-side glass)
- Headlamps, dual halogen composite with automatic exterior lamp control and flash-to-pass feature
- Luggage rack side rails, roof-mounted, Black
- Mirrors, outside heated power-adjustable, manual-folding (with 1LT Preferred Equipment Group Mirror caps are color-keyed.) (with 2LT Preferred Equipment Group Mirror caps are color-keyed. Mirror caps are satin chrome with (Z71) Off-Road Suspension Package.)
- Moldings, color-keyed bodyside- Wiper, rear intermittent with washer
- Wipers, front intermittent wet-arm with flat blade and pulse washers

## Safety

- Audio system, AM/FM stereo with MP3 compatible CD player, seek-and-scan, digital clock, auto-tone control, Radio Data System (RDS), speed-compensated volume and TheftLock
- OnStar, 1-year of Safe and Sound plan. Includes Automatic Notification of Air Bag Deployment, Stolen Vehicle Location Assistance, Emergency Services, Roadside Assistance, Remote Door Unlock, OnStar Vehicle Diagnostics, Hands-Free Calling, AccidentAssist, and Remote Horn & Lights (Not available with order type FDR. OnStar services require vehicle electrical system (including battery), wireless service and GPS satellite signals to be available and operating for features to function properly. OnStar acts as a link to existing emergency service providers. OnStar Vehicle Diagnostics available on most 2004 MY and newer GM vehicles. Diagnostic capability varies by model. Visit onstar.com for system limitations and details.
- Air conditioning, dual-zone manual climate control with individual climate settings for driver and right-front passenger
- Air conditioning, rear auxiliary- Assist handles, front passenger and second row outboard
- Audio system controls, rear with 2 headphone jacks (headphones not included), power outlet and controls for volume, station selection and media
- Audio system feature, 8-speaker system
- Cargo mat (Not available when (AS3) 3-passenger, third row 50/50 split-bench seat or (AW2) 2-passenger, third row 50/50 split-bench seat is ordered.
- Cargo shade (Not available when (AS3) 3-passenger, third row 50/50 split-bench seat or (AW2) 2-passenger, third row 50/50 split-bench seat is ordered.
- Console, floor with storage area, cup holders and integrated second row audio controls
- Console, overhead mini with map lights (Includes sunroof controls when (CF5) power sunroof is ordered.)
- Cruise control, electronic with set and resume speed - Defogger, rear-window electric
- Door locks, power programmable with lockout protection
- Floor covering, color-keyed carpeting
- Floor mats, color-keyed carpeted front and second row, removable - Headliner, cloth
- Heater, rear auxiliary with rear passenger heating ducts
- Instrumentation, analog with speedometer, odometer with trip odometer, fuel level, voltmeter, engine temperature, oil pressure and tachometer
- Lighting, interior with dome light, driver- and passenger-side door switch with delayed entry feature, cargo lights, door handle or Remote Keyless Entry-activated illuminated entry and map lights in front and second seat positions
- Mirror, inside rearview auto-dimming with 8-point compass and outside temperature display
- Power outlets, 5 auxiliary, 12-volt, includes 2 on the instrument panel, 1 in the cargo area, 1 inside center console and 1 at back of console

▷ 120

REAR PARKING ASSIST, ULTRASONIC  
with rearview LED display and audible warning \$245

REARVIEW CAMERA SYSTEM \$250

SKID PLATE PACKAGE,  
includes aluminum front underbody shield starting behind front bumper and running to first cross-member, protecting front underbody, oil pan, differential case and transfer case, frame-mounted shields \$125

SOUND SYSTEM FEATURE, BOSE PREMIUM SPEAKER SYSTEM, 9 SPEAKERS,  
includes subwoofer in center console \$495

WIPERS, FRONT INTERMITTENT, RAINSENSE \$95

XM SATELLITE RADIO,  
With a wide variety of programming, XM has something to excite any driver. Whether you want to be entertained or informed, to laugh, think, or sing, XM has the perfect channel for you-coast-to-coast, and in digital-quality sound. 3 trial months-no obligation (

AIR CONDITIONING, DUAL-ZONE AUTOMATIC CLIMATE CONTROL  
with individual climate settings for driver and right-front passenger \$195

REAR AXLE, 3.73 RATIO

BODY, LIFTGATE WITH LIFTGLASS, POWER REAR DOOR SYSTEM  
with rear-window wiper/washer \$350

EMISSIONS, CALIFORNIA STATE REQUIREMENTS

LT PREFERRED EQUIPMENT GROUP \$3,450  
Includes (CJ2) Air conditioning, dual-zone automatic climate control, (JF4) Pedals, power-adjustable, (AP3) Remote vehicle starter system, includes Remote Keyless Entry, (AM8) Seats, second row 60/40 split-folding bench with leather-appointed seating, (US9) Audio system, AM/FM stereo with MP3 compatible 6-disc in-dash CD changer, (UG1) Universal Home Remote, (UD7) Rear Parking Assist, Ultrasonic, (ASF) Air bags, head curtain side-impact, first and second row outboard seating positions with rollover sensor, (AN3) Seats, front bucket with leather-appointed seating, (AG2)Seat adjuster, front passenger power, (UQA) Audio system feature, Bose premium 9-speaker system, (U2K) XM Satellite Radio, (DL3) Mirrors, outside heated power-adjustable, power-folding and driver-side auto-dimming, body-color

AUDIO SYSTEM WITH NAVIGATION, AM/FM STEREO  
with MP3 compatible CD/DVD player and DVD-based navigation, seek-and-scan, digital clock, auto-tone control, Radio Data System (RDS), speed-compensated volume, TheftLock and voice recognition, plays CD or DVD in upper slot \$2,250

SEATS, FRONT BUCKET  
with leather-appointed seating, 12-way power driver and front passenger seat adjusters, power lumbar control, heated seat cushion and seatbacks, 2-position driver memory, adjustable head restraints, storage pockets and floor

- Remote vehicle starter prep package, includes Remote Keyless Entry
- Seat adjuster, driver power
- Seats, front bucket with Custom Cloth, 6-way power driver seat adjuster, outboard adjustable head restraints, floor console and rear storage pockets
- Seats, second row 60/40 split-folding bench with Custom Cloth, 3-passenger with center armrest
- Steering column, Tilt-Wheel, adjustable with brake/transmission shift interlock
- Steering wheel controls, mounted audio, Driver Information Center and cruise controls, includes Driver Information Center controls on instrument panel to right of steering wheel
- Steering wheel, leather-wrapped Theft-deterrent system, vehicle, PASS-Key III
- Tire Pressure Monitoring System (does not apply to spare tire)
- Visors, driver and front passenger illuminated vanity mirrors, padded with cloth trim, extends on rod
- Warning tones, headlamp on, key-in-ignition, driver and right-front passenger safety belt unfasten and turn signal on
- Windows, power with driver Express-Down and lockout features

## Mechanical

- Tire, spare P265/70R17 (Upgradeable to (4JP) P265/70R17 on-/off-road, blackwall spare tire.)
- Tires, P265/70R17 all-season, blackwall- 4-wheel drive- Alternator, 160 amps
- Battery, heavy-duty 600 cold-cranking amps, maintenance-free with rundown protection and retained accessory power
- Body, liftgate with liftglass, rear door system with rear-window wiper/washer
- Brakes, 4-wheel antilock, 4-wheel disc
- Engine, Vortec 5.3L V8 SFI Flex-Fuel with Active Fuel Management, capable of running on unleaded or up to 85% ethanol (320 hp [238.6 kW] @ 5200 rpm, 340 lb-ft of torque [459.0 N-m] @ 4200 rpm), iron block (Standard on 4x4 models. Available on 2WD models.)
- GVWR, 7300 lbs. (3311 kg) (Standard on 4WD models.)- Key, single, 2-sided
- Rear axle, 3.73 ratio (Standard on 4x4 models. Available on 2WD models.)
- Recovery hooks, front, frame-mounted (Requires 4x4 models.)
- StabiliTrak, stability control system with Proactive Roll Avoidance- Steering, power
- Suspension Package, Premium Smooth Ride
- Suspension, front coil-over-shock with stabilizer bar
- Suspension, rear multi-link with coil springs
- Tire carrier, lockable outside spare, winch-type mounted under frame at rear
- Trailering equipment, heavy-duty, includes trailering hitch platform, 7-wire harness with independent fused trailering circuits mated to a 7-way sealed connector and (VR4) 2" trailering receiver
- Transfer case, electronic Autotrac with rotary controls (Requires 4x4 models.)
- Transmission, 4-speed automatic, electronically controlled with overdrive and tow/haul mode
- Wheel, 17" (43.2 cm) full-size, steel spare
- Wheels, 4 - 17" x 7.5" (43.2 cm x 19.1 cm) aluminum, 5-spoke, with smooth surface and rectangular pockets (Not available with (QJP) P265/70R17 on-/off-road, blackwall tires or (QJM) P265/70R17 on-/off-road, White outlined-letter tires.)

head restraints, storage pockets and floor console

---

**SEATS, SECOND ROW BUCKET**  
with leather-appointed seating, Reclining \$490

---

**SEATS, THIRD ROW 50/50 SPLIT-BENCH**  
\$860

---

**SUSPENSION PACKAGE, OFF-ROAD**  
(Includes off-road jounce bumpers, specially-tuned springs and gas-charged monotube shocks, (G80) heavy-duty locking rear differential, (B71) front and rear wheel flares, (N87) 4-18" x 8" (45.7 cm x 20.3 cm) aluminum wheels, (QXN) P265/65R18 on-/off-road, blackwall tires, (NZZ) Skid Plate Package, (BVV) tubular assist steps and (K47) high-capacity air cleaner. Also includes (V76) front frame-mounted recovery hooks on 2WD models.  
\$1,795

---

**TIRES, P265/65R18 ON-/OFF-ROAD, BLACKWALL**

---

**WHEELS, 4-18" X 8" (45.7 CM X 20.3 CM) ALUMINUM**

---

**Option Packages Total**  
\$11,070

Carbuffs

[carbuffs.com](http://carbuffs.com)

(925) 671-2010

2281-A Via De Mercados

Concord, CA 94520

© 2024 AutoRevo - All rights reserved. - Powered by AutoRevo