



2013 Chevrolet Camaro SS ZL1 Style

Website Price \$19,995

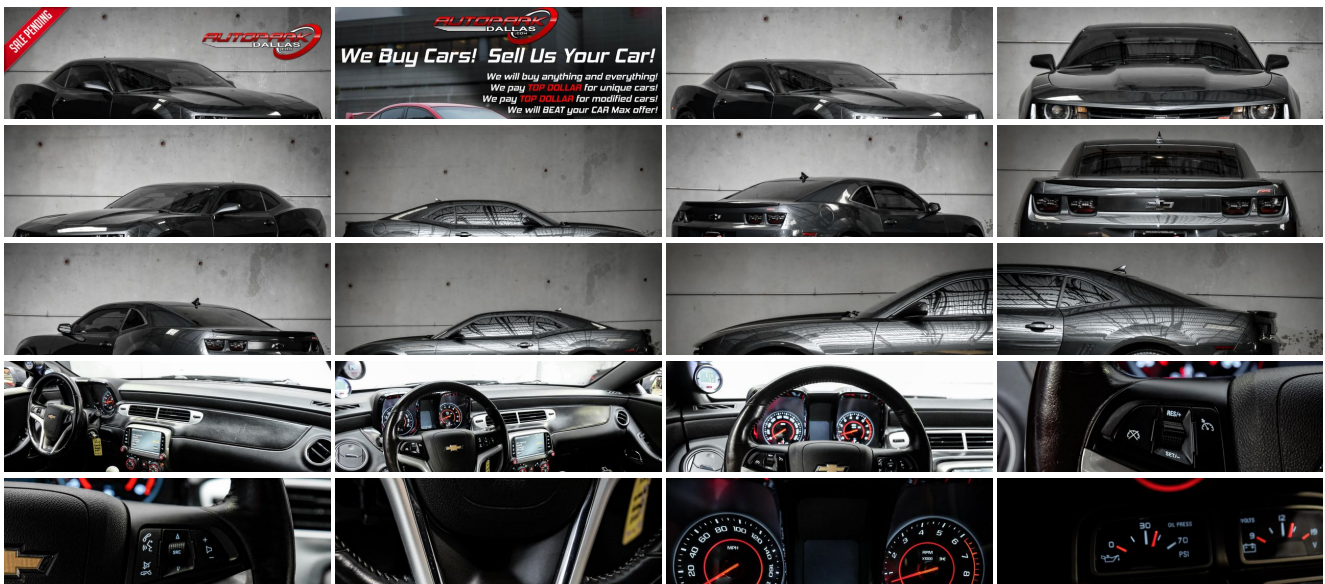
View this vehicle on our website at autoparkdallas.com



(214) 945-2601

2061 S Stemmons Fwy , Lewisville, TX 75067

- Photos
- Details
- Contact



Specifications:

Year:	2013
VIN:	2G1FS1EW3D9185320
Make:	Chevrolet
Model/Trim:	Camaro SS ZL1 Style
Condition:	Pre-Owned
Body:	Coupe
Exterior:	Ashen Gray Metallic
Engine:	ENGINE, 6.2L V8 SFI
Interior:	Black Cloth
Transmission:	TRANSMISSION, 6-SPEED MANUAL
Mileage:	80,724
Drivetrain:	Rear Wheel Drive
Economy:	City 15 / Highway 24

Vehicle Description

AutoPark Dallas is thrilled to offer you this Modified 2013 Chevrolet Camaro SS ZL1 Style for sale! Generations of Americans grew up with the Chevrolet Camaro and plenty of people can say its gone through MANY generational changes, this 2011 being the Fifth Generation is where Big & Aggressive became the need! This Camaro is powered by the reliable 6.2L V8 engine that pumps 426 horses stock and the flag ship aspect being that new body style that once again provides us consumers with a unique look to this muscle cars. Our Camaro here at APD doesn't just look mean, but thanks to the Pacesetter Headers and BORLA Exhaust System really gives a dominating presence too! If you looking for a sports coupe or a fun weekend driver then look no further than this Camaro SS parked in our indoor 16,000 Sq Ft Showroom located in Dallas , Texas amongst our inventory of 100+ other Performance / Modified and Luxury cars!

2013 Chevrolet Camaro SS

* RS Package !*

* Rear Vision Package !*

MODIFICATIONS!

Pacesetter Headers

BORLA Cat-Back Exhaust System

SLP Blackwing Cold-Air Intake

ZL1 Style Front Bumper

WB Wideband Gauges (Air/Fuel Ratio & Oil Pressure)

Spyder Smoked-Out Tail Lights

Window Tint

STOCK!

Ashen Gray Metallic Exterior

Black Sport Cloth Interior

Hands Free Bluetooth

Navigation w/ Voice Commands

Back-Up Camera

Rear Reverse Sensors

Single-Zone Air Conditioning

BREMBO Brakes

Bluetooth Audio Streaming

Cruise Control

AUX & USB Capable

Daytime Running Lights

Steering Wheel Mounted Controls

6.2L V8 SFI Engine

6-Speed Manual Transmission

Rear Wheel Drive

Professionally Detailed!

Well Maintained!

* Free CarFax Report !*

AND SO MUCH MORE!!!

Financing is available!

Check out our Payment Calculator to get an estimate on your monthly payments!

OR

Get pre-approved in no time by filling out a credit application on the 'Finance' section of our website!

Check out our Google Reviews by *Clicking* this LINK!

Referrals and Testimonials is what our business is built on!

The team here at AutoPark Dallas, is dedicated to offering a level of customer service not usually found in the automobile industry. Thanks to years of extensive car buying / selling experience, we pursue quality used and new vehicles that are hand-picked from factory sources. Our love for automobiles and dislike of traditional dealership tactics is what motivates us to provide the service we do! The pride we take in continuing this service long after the vehicle has been delivered is what we strive for! Looking forward to making every effort to see that our customer is completely satisfied and a friend for life!

Pre-purchase inspections are always welcomed!

We also offer airport pick-up, competitive financing options, free CarFax Reports, Car Shipping nationwide, and so much more!

Trade-In(s) are always accepted or sell us your used car (MODIFIED OR NOT)! Please call or text for more information about Trade-Ins or selling your car to us @ (214) 945-2601!

#(214) 945-2601

Call or Text *Anytime!*

Se habla Español

WE BUY CARS!

WWW.AUTOPARKDALLAS.COM

Installed Options

Interior

- Air conditioning, single-zone manual- Air filtration system with pollen filter
- Coat hooks, driver- and passenger-side rear
- Compass, located in Driver Information Center- Console, floor, with armrest
- Cruise control, electronic with set and resume speed, steering wheel mounted
- Cup holders, 2 front- Dead pedal, driver- Defogger, rear-window, electric
- Door locks, power programmable with lockout protection- Floor mats, carpeted front
- Glovebox, lockable
- Instrumentation, analog with Driver Information Center display, includes speedometer, tachometer, fuel gauge and engine temperature gauge
- Lighting, front reading lamps
- Lighting, interior dome with illuminated entry and theater dimming
- Map pockets, front doors- Mirror, inside rearview manual day/night
- Power outlets, 2 auxiliary 1 located in center console storage area and 1 located at front of center console
- Remote Keyless Entry
- Seat adjuster, driver, 6-way power (fore/aft, up/down, tilt) with power recliner
- Seat adjuster, front passenger, 6-way power (fore/aft, up/down, tilt) with power recliner
- Seat trim, Sport Cloth seat trim
- Seats, front Sport bucket includes adjustable head restraints and folding rear seat with trunk pass-through (Includes passenger-side seatback map pocket.)
- Shift knob, leather-wrapped- Sill plate, Chevrolet
- Steering column, manual rake and telescopic- Steering wheel, 3-spoke leather-wrapped
- Theft-deterrent system, PASS-Key III- Trunk release, remote, located on driver-side
- Visors, driver and front passenger vanity mirrors, covered
- Windows, power with driver and passenger Express-Down/Up

Exterior

- Tires, P245/45R20 front and P275/40R20 rear, blackwall, summer
- Wheels, 20" x 8" (50.8 cm x 20.3 cm) front and 20" x 9" (50.8 cm x 22.9 cm) rear flangeless, painted aluminum with Bright Silver finish (Midnight Silver finish when (WRS) RS Package is ordered.)
- Door handles, body-color
- Fascias, front and rear body-color, SS-specific with unique front grille and rear diffuser, lower extension and front air scoop
- Fog lamps (When (WRS) RS Package is ordered, fog lamps act as Daytime Running Lamps.)
- Headlamps, halogen composite with automatic exterior lamp control
- Hood blanket with debossed Chevrolet bowtie
- Mirrors, outside power-adjustable body-color- Molding, Black roof ditch
- Moldings, body-color lower rocker
- Spare tire and wheel, not desired tire sealant and inflator kit in place of spare tire
- Spoiler, rear- Tire sealant and inflator kit in place of spare tire - Wipers, front intermittent

Safety

- Air conditioning, single-zone manual- Air filtration system with pollen filter
- Coat hooks, driver- and passenger-side rear
- Compass, located in Driver Information Center- Console, floor, with armrest
- Cruise control, electronic with set and resume speed, steering wheel mounted
- Cup holders, 2 front- Dead pedal, driver- Defogger, rear-window, electric
- Door locks, power programmable with lockout protection- Floor mats, carpeted front
- Glovebox, lockable
- Instrumentation, analog with Driver Information Center display, includes speedometer, tachometer, fuel gauge and engine temperature gauge
- Lighting, front reading lamps
- Lighting, interior dome with illuminated entry and theater dimming
- Map pockets, front doors- Mirror, inside rearview manual day/night
- Power outlets, 2 auxiliary 1 located in center console storage area and 1 located at front of center console
- Remote Keyless Entry

Option Packages

Factory Installed Packages

ENGINE, 6.2L V8 SFI

(426 hp [317.6 kW] @ 5900 rpm, 420 lb-ft of torque [567.0 N-m] @ 4600 rpm)

TRANSMISSION, 6-SPEED MANUAL

HEADLAMPS, HIGH INTENSITY DISCHARGE

with automatic exterior lamp control

MOLDING, BODY-COLOR ROOF DITCH

REAR PARK ASSIST, ULTRASONIC

REAR VISION PACKAGE

includes (UD7) Rear Park Assist and (UVC) Rear Vision Camera

\$495

REARVIEW VISION CAMERA

display integrated into Color Touch Radio

RS PACKAGE

includes (R42) 20" x 8" front and 20" x 9" rear flangeless, painted aluminum wheels with Midnight Silver finish, (BD8) body-color roof ditch molding and (T4F) high intensity discharge headlamps; shark-fin antenna is body-color

\$1,350

AXLE, 3.45 RATIO

EMISSIONS, FEDERAL REQUIREMENTS

ASHEN GRAY METALLIC

STANDARD PAINT

1SS PREFERRED EQUIPMENT GROUP,

includes Standard Equipment

AUDIO SYSTEM WITH NAVIGATION, 7" DIAGONAL COLOR TOUCH SCREEN DISPLAY AM/FM STEREO WITH NAVIGATION DISPLAY

\$795

BLACK, SPORT CLOTH SEAT TRIM

SEATS, FRONT SPORT BUCKET

includes adjustable head restraints and folding rear seat with trunk pass-through

Option Packages Total

\$2,640

- Seat adjuster, driver, 6-way power (fore/aft, up/down, tilt) with power recliner
- Seat adjuster, front passenger, 6-way power (fore/aft, up/down, tilt) with power recliner
- Seat trim, Sport Cloth seat trim
- Seats, front Sport bucket includes adjustable head restraints and folding rear seat with trunk pass-through (Includes passenger-side seatback map pocket.)
- Shift knob, leather-wrapped- Sill plate, Chevrolet
- Steering column, manual rake and telescopic- Steering wheel, 3-spoke leather-wrapped
- Theft-deterrent system, PASS-Key III- Trunk release, remote, located on driver-side
- Visors, driver and front passenger vanity mirrors, covered
- Windows, power with driver and passenger Express-Down/Up

Mechanical

- Alternator, 150 amps- Axle, 3.45 ratio
- Battery, maintenance-free with rundown protection and retained accessory power
- Brakes, 4-wheel antilock, 4-wheel disc (Brembo performance 4 piston front and 4 piston rear brakes.)
- Brakes, Brembo- Differential, limited slip
- Engine, 6.2L V8 SFI (426 hp [317.6 kW] @ 5900 rpm, 420 lb-ft of torque [567.0 N-m] @ 4600 rpm) (Requires (MN6) 6-speed manual transmission.)
- Exhaust, dual-outlet stainless-steel with polished tips- Rear wheel drive
- Steering, power, variable ratio, electric- Suspension, Performance
- Transmission, 6-speed manual



Auto Park Dallas

View this car on our website at autoparkdallas.com/6806865

Website: autoparkdallas.com

Phone: (214) 945-2601

Map: [2061 S Stemmons Fwy, Lewisville, TX 75067](#)

