

2019 Chevrolet Silverado 2500HD Work Truck

View this car on our website at workvansandtrucks.com/6805475/ebrochure



Our Price **\$0**

Retail Value **\$46,995**

Specifications:

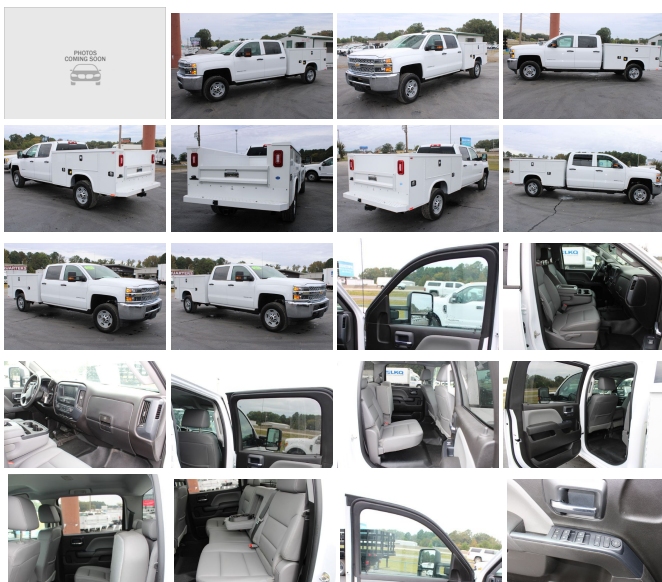
Year:	2019
VIN:	1GC1KREG1KF105767
Make:	Chevrolet
Stock:	U2450
Model/Trim:	Silverado 2500HD Work Truck
Condition:	Pre-Owned
Body:	Pickup Truck
Exterior:	WHITE
Engine:	ENGINE, VORTEC 6.0L VARIABLE VALVE TIMING V8 SFI, E85-COMPATIBLE, FLEXFUEL
Interior:	GRAY
Mileage:	39,886
Drivetrain:	4 Wheel Drive

2019 CHEVROLET 2500 SILVERADO WT CREW CAB 4X4 UTILITY 6.0 GAS ENGINE, AUTOMATIC TRANSMISSION.

This 3/4 ton work truck comes with Power Windows, Power Door Locks, Power Mirrors, Tow Mirrors, Trailer Brake Controller, Tilt Steering Wheel, Cruise Control, Tow Haul Mode, Manual Shift Mode, am/fm/xm/radio, Back-up Camera, Traction Control, Manual Shift 4x4 Lever, Vinyl Floor, Vinyl Seats.

New Knapheide Flip Top Service Comes with 8 locking Tool Bins, Led Taillights, Wide Rear Step, Tow Hitch.

Current Oil and Filter Service.



Our Location :



2019 Chevrolet Silverado 2500HD Work Truck

T & B Auto Sales - 501-847-2727 - View this car on our website at workvansandtrucks.com/6805475/ebrochure

Installed Options

Interior

- Seats, front 40/20/40 split-bench, 3-passenger, driver and front passenger recline with outboard head restraints and center fold-down armrest with storage. Vinyl has fixed lumbar and cloth has manually adjustable driver lumbar. (Upgradeable to (AZ3) front 40/20/40 split-bench seat.)
- Seat trim, Vinyl
- Seat, rear 60/40 folding bench (folds up), 3-passenger (includes child seat top tether anchor) (Requires Crew Cab models.)
- Floor covering, Graphite-colored rubberized-vinyl- Steering column, manual Tilt-Wheel
- Steering wheel
- Instrumentation, 6-gauge cluster featuring speedometer, fuel level, engine temperature, tachometer, voltage and oil pressure
- Driver Information Center, 3.5-inch diagonal monochromatic display provides warning messages and basic vehicle information
- Windows, power with driver express up and down and express down on all other windows (Standard on Crew Cab and Double Cab models. On Regular Cab, included and only available with (PCM) WT Convenience Package.) (Standard on Crew Cab and Double Cab models. On Regular Cab model, included and only available with (PCM) WT Fleet Convenience Package (Double Cab and Regular Cab.)
- Door locks, power- Cruise control, steering wheel-mounted- Air conditioning, single-zone
- Assist handle, front passenger and driver on A-pillars

Exterior

- Wheels, 17" (43.2 cm) steel includes 17" x 7.5" (43.2 cm x 19.1 cm) steel spare wheel. Spare not included with (ZW9) pickup box delete unless a spare tire is ordered
- Tires, LT245/75R17E all-season, blackwall
- Tire carrier lock keyed cylinder lock that utilizes same key as ignition and door (Not included when (ZW9) pickup box delete or (9J4) rear bumper delete is ordered.)
- Bumper, front chrome- CornerStep, rear bumper (Requires (E63) pickup box.)
- Bumper, rear chrome with bumper CornerSteps (Requires (E63) pickup box.)
- Grille, chrome with chrome mesh inserts- Grille surround, chrome
- Headlamps, halogen projector-beam

- Lamps, cargo area, cab mounted with switch on center switch bank
- Mirrors, outside manual, Black (Requires Crew Cab model.)
- Glass, solar absorbing, tinted- Door handles, Black
- Tailgate and bed rail protection caps, top
- Tailgate, locking, utilizes same key as ignition and door (Not available with (AQQ) Remote Keyless Entry.)

Safety

- Seats, front 40/20/40 split-bench, 3-passenger, driver and front passenger recline with outboard head restraints and center fold-down armrest with storage. Vinyl has fixed lumbar and cloth has manually adjustable driver lumbar. (Upgradeable to (AZ3) front 40/20/40 split-bench seat.)
- Seat trim, Vinyl
- Seat, rear 60/40 folding bench (folds up), 3-passenger (includes child seat top tether anchor) (Requires Crew Cab models.)
- Floor covering, Graphite-colored rubberized-vinyl- Steering column, manual Tilt-Wheel
- Steering wheel
- Instrumentation, 6-gauge cluster featuring speedometer, fuel level, engine temperature, tachometer, voltage and oil pressure
- Driver Information Center, 3.5-inch diagonal monochromatic display provides warning messages and basic vehicle information
- Windows, power with driver express up and down and express down on all other windows (Standard on Crew Cab and Double Cab models. On Regular Cab, included and only available with (PCM) WT Convenience Package.) (Standard on Crew Cab and Double Cab models. On Regular Cab model, included and only available with (PCM) WT Fleet Convenience Package (Double Cab and Regular Cab.)
- Door locks, power- Cruise control, steering wheel-mounted- Air conditioning, single-zone
- Assist handle, front passenger and driver on A-pillars

Mechanical

- Engine, Vortec 6.0L Variable Valve Timing V8 SFI, E85-compatible, FlexFuel capable of running on unleaded or up to 85% ethanol (360 hp [268.4 kW] @ 5400 rpm, 380 lb-ft of torque [515.0 N-m] @ 4200 rpm) (Does not include E85 capability with (ZW9) pickup box delete.)
- Transmission, 6-speed automatic, heavy-duty, electronically controlled with overdrive and tow/haul mode. Includes Cruise Grade Braking and Powertrain Grade Braking (Requires (L96) Vortec 6.0L V8 SFI engine or (LC8) 6.0L V8 SFI Gaseous CNG/LPG capable engine.)
- Rear axle, 4.10 ratio (Requires (L96) Vortec 6.0L V8 SFI engine or (LC8) 6.0L V8 SFI Gaseous CNG/LPG capable engine.)
- Pickup box
- GVWR, 9900 lbs. (4490 kg) (Requires Crew Cab CK25943 model and (L96) Vortec 6.0L V8 SFI engine or (LC8) 6.0L V8 SFI Gaseous CNG/LPG capable engine. Not available on 2WD Crew Cab models.)
- Air cleaner, high-capacity
- Transfer case, with floor-mounted shifter (Included with 4WD models only.)
- Differential, heavy-duty locking rear- Four wheel drive- Cooling, external engine oil cooler
- Cooling, auxiliary external transmission oil cooler
- Battery, heavy-duty 720 cold-cranking amps/80 Amp-hr, maintenance-free with rundown protection and retained accessory power
- Alternator, 150 amps- Frame, fully-boxed, hydroformed front section
- Recovery hooks, front, frame-mounted, black
- Suspension Package, Standard includes 51mm twin tube shock absorbers and 33mm front stabilizer bar
- Steering, Recirculating Ball with smart flow power steering system
- Brakes, 4-wheel antilock, 4-wheel disc with DuraLife brake rotors
- Capless Fuel Fill (Gas engine only. Not available with (ZW9) pickup box delete.)
- Exhaust, aluminized stainless-steel muffler and tailpipe

Option Packages

Factory Installed Packages

ENGINE, VORTEC 6.0L VARIABLE VALVE TIMING V8 SFI, E85-COMPATIBLE, FLEXFUEL
capable of running on unleaded or up to 85% ethanol (360 hp [268.4 kW] @ 5400 rpm, 380 lb-ft of torque [515.0 N-m] @ 4200 rpm)

T & B AUTO SALES



workvansandtrucks.com

501-847-2727

25637 I-30

Bryant, AR 72022

© 2022 AutoRevo - All rights reserved. - Powered by AutoRevo