



2012 Mercedes-Benz CLS 63 AMG 1-Owner AMG PERFORMANCE PKG

Website Price \$37,995

View this vehicle on our website at autoparkdallas.com



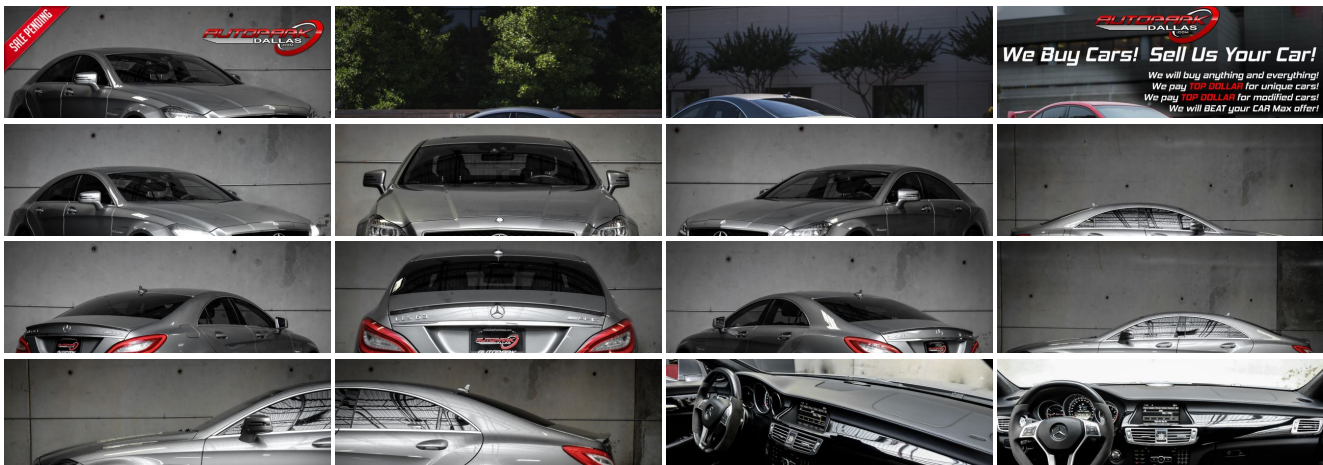
(214) 945-2601

2061 S Stemmons Fwy , Lewisville, TX 75067

Photos

Details

Contact





Specifications:

Year:	2012
VIN:	WDDLJ7EB9CA030860
Make:	Mercedes-Benz
Model/Trim:	CLS 63 AMG 1-Owner AMG PERFORMANCE PKG
Condition:	Pre-Owned
Body:	Sedan
Exterior:	Palladium Silver Metallic
Engine:	5.5L bi-turbo 32-valve V8 AMG engine
Interior:	Black Leather
Transmission:	7-speed driver-adaptive electronic automatic transmission w/OD -inc: AMG SPEEDSHIFT, sport, comfort & manual shift mode
Mileage:	47,969
Drivetrain:	Rear Wheel Drive
Economy:	City 16 / Highway 25

Vehicle Description

AutoPark Dallas is thrilled to offer you this Pristine 1-OWNER 2012 Mercedes-Benz CLS 63 with the ***RARE*** AMG Performance Package for sale! The answer is absolutely YES! You do want the CLS 63 with its insane German Handcrafted 5.5L bi-turbo V8 engine, show quality design, and luxurious trademark interior! These highway monsters are trouble for those with a lead foot, while at the same time comfortable for the daily drive that it is defined as the nice middle ground for us need-for-speed lovers. Our Garage-Kept Quality CLS 63 AMG here at AutoPark Dallas has a cherry on top of this automotive sundae, with this beastly Benz being equipped with that elusive **AMG Development Package** boosting that 518 stock horses to a much more desired **550 HORSES!** DO NOT MISS OUT! Come check out the beauty of German Engineering, with this CLS 63 AMG parked in our indoor 16,000 Sq Ft Showroom located in Dallas , Texas amongst our inventory of 100+ other Performance / Modified and Luxury cars!

2012 Mercedes-Benz CLS 63 AMG

[* AMG PERFORMANCE PACKAGE !*](#)

*** 1 OWNER !***

*** PRISTINE CONDITION !***

*** LOW MILEAGE !***

*** Premium Package !***

*** Lane Tracking Package !***

*** Night View Assist Package !***

Palladium Silver Metallic Exterior

Black Leather Interior

Hands Free Bluetooth

Heated & Cooled Front Row Seats

Navigation w/ Voice Command

Blind Spot Monitoring

Lane Keeping Assist

Back-Up Camera

Front & Rear Reverse Sensors

Comfort Access Keyless Entry
Push Button Start
Powered Moonroof
Selective Drive Modes
AMG 2-Stage Electronic Stability Program
Powered Rear Sunshade
Dual Climate Controls
Dynamic Driver Seat w/ Pulse Mode
Harmon / Kardon Premium Sound System
Driver & Passenger Seat Memory
Cruise Control
Daytime Running Lights
In-Dash 6 Disc CD Changer
CD & AUX Capable
Powered Trunk
Steering Wheel Mounted Controls
Manual Mode w/ Paddle Shifters
5.5L Bi-Turbo 32-Valve V8 AMG Engine
7-Speed Automatic Transmission
Rear Wheel Drive
Professionally Detailed!
Well Maintained!
*** Free CarFax Report !***
AND SO MUCH MORE!!!

Financing is available!

Check out our Payment Calculator to get an estimate on your monthly payments!

OR

Get pre-approved in no time by filling out a credit application on the 'Finance' section of our website!

We also offer MANY different Extended Warranty options!

Check out our Google Reviews by ***Clicking*** this LINK!

Referrals and Testimonials is what our business is built on!

The team here at AutoPark Dallas, is dedicated to offering a level of customer service not usually found in the automobile industry. Thanks to years of extensive car buying / selling experience, we pursue quality used and new vehicles that are hand-picked from factory sources. Our love for automobiles and dislike of traditional dealership tactics is what motivates us to provide the service we do! The pride we take in continuing this service long after the vehicle has been delivered is what we strive for! Looking forward to making every effort to see that our customer is completely satisfied and a friend for life!

Pre-purchase inspections are always welcomed!

We also offer airport pick-up, competitive financing options, free CarFax Reports, Car Shipping nationwide, Extended Warranty plans, and so much more!

Trade-In(s) are always accepted or sell us your used car (MODIFIED OR NOT)! Please call or text for more information about Trade-Ins or selling your car to us @ (214) 945-2601!

#(214) 945-2601

Call or Text **Anytime!**

Se habla Español

WE BUY CARS!

WWW.AUTOPARKDALLAS.COM

AMG 2-stage electronic stability program

Installed Options

Interior

- 10-way pwr heated multi-contour front AMG sport seats -inc: 3-position memory & pwr height adjustable active head restraints
- 12V pwr outlet in rear seat storage compartment & illuminated cargo area
- AMG door entrance plates- AMG floor mats- AMG instrument cluster w/RACETIMER
- AMG leather-trimmed shift knob
- AMG premium leather-trimmed 4-way pwr tilt/telescopic sport steering wheel -inc: aluminum shift paddles
- Anti-theft alarm system w/engine immobilizer, panic remote
- Auto-dimming rearview mirror- Dual-zone automatic climate control
- Electronic cruise control- Full-length center console
- Integrated HomeLink compatible (3) button garage door opener
- Multi-function display in center of speedometer -inc: trip computer, exterior temp gauge, maintenance system, oil level check, digital speedometer, reminder & malfunction messages, driver-programmable settings, cruise control, audio status, navigation route guidance
- NECK-PRO active head restraints- Premium leather seat upholstery
- Pwr rear window sunshade- Pwr windows w/1-touch express up/down
- Rear window defroster w/auto shut-off based on time, driving speed & exterior temp
- Rubber-studded stainless-steel pedals
- SmartKey infrared remote -inc: trunk open, opening/closing for windows & sunroof, panic alarm, fuel filler door & selective unlock all
- SmartKey system inc: Remote central locking system & anti-theft engine immobilizer

Exterior

- 19" x 8.5" front/19" x 9.5" rear AMG triple 5-spoke aluminum wheels
- Bi-xenon headlamps- Halogen front foglamps
- P255/35R19 front & P285/30R19 rear high performance tires
- Pwr heated mirrors -inc: auto-dimming driver mirror & memory, integrated LED turn signals
- Pwr tilt/slide sunroof w/1-touch express open/close
- Single red rear foglamp in LH taillamp - Sport bodystyling
- Variable intermittent rain-sensing windshield wipers

Safety

- 10-way pwr heated multi-contour front AMG sport seats -inc: 3-position memory & pwr height adjustable active head restraints
- 12V pwr outlet in rear seat storage compartment & illuminated cargo area
- AMG door entrance plates- AMG floor mats- AMG instrument cluster w/RACETIMER

Option Packages

Factory Installed Packages

19" AMG TWIN 5-SPOKE FORGED ALLOY WHEEL \$1,000

AMG PERFORMANCE PKG
-inc: carbon fiber trunklid spoiler, carbon fiber engine cover, red brake calipers, 186-mph top speed limiter, AMG performance steering wheel, sport suspension, increased engine performance (550 hp & 590 lb-ft) \$7,300

LANE TRACKING PKG
-inc: blind spot assist, lane keeping assist \$850

NIGHT VIEW ASSIST PLUS \$1,780

PIANO BLACK LACQUER WOOD TRIM

PREMIUM I PKG
-inc: rearview camera, heated/ventilated front seats w/active multicontour driver seat, adaptive highbeam assist, full LED headlamps, KEYLESS-GO, pwr trunk closer \$3,690

REAR SIDE-IMPACT AIRBAGS \$420

PALLADIUM SILVER METALLIC

STANDARD PAINT

BLACK, PREMIUM LEATHER SEAT UPHOLSTERY

Option Packages Total \$15,040

- AMG door entrance plates- AMG floor mats- AMG instrument cluster w/AMG emblem
- AMG leather-trimmed shift knob
- AMG premium leather-trimmed 4-way pwr tilt/telescopic sport steering wheel -inc: aluminum shift paddles
- Anti-theft alarm system w/engine immobilizer, panic remote
- Auto-dimming rearview mirror- Dual-zone automatic climate control
- Electronic cruise control- Full-length center console
- Integrated HomeLink compatible (3) button garage door opener
- Multi-function display in center of speedometer -inc: trip computer, exterior temp gauge, maintenance system, oil level check, digital speedometer, reminder & malfunction messages, driver-programmable settings, cruise control, audio status, navigation route guidance
- NECK-PRO active head restraints- Premium leather seat upholstery
- Pwr rear window sunshade- Pwr windows w/1-touch express up/down
- Rear window defroster w/auto shut-off based on time, driving speed & exterior temp
- Rubber-studded stainless-steel pedals
- SmartKey infrared remote -inc: trunk open, opening/closing for windows & sunroof, panic alarm, fuel filler door & selective unlock all
- SmartKey system inc: Remote central locking system & anti-theft engine immobilizer

Mechanical

- 5.5L bi-turbo 32-valve V8 AMG engine
- 7-speed driver-adaptive electronic automatic transmission w/OD -inc: AMG SPEEDSHIFT, sport, comfort & manual shift mode
- AMG dual-exhaust system w/dual twin chrome tailpipes
- AMG pwr 6-piston perforated & ventilated front & 4-piston perforated & ventilated rear disc brakes
- AMG speed-sensitive pwr rack & pinion steering
- AMG-calibrated independent 3-link front suspension -inc: anti-dive control
- AMG-calibrated independent 5-arm multi-link rear suspension -inc: anti-squat control
- Dual-circuit hydraulic braking system- Front/rear stabilizer bars
- Rear AIRMATIC air suspension w/steel front springs- Rear wheel drive



Auto Park Dallas

View this car on our website at autoparkdallas.com/6802160

Website: autoparkdallas.com

Phone: (214) 945-2601

Map: [2061 S Stemmons Fwy, Lewisville, TX 75067](#)

