



2009 BMW 750Li LOADED 52K MLS NAVIGATION NEW TIRES SERVICE RECORDS

Contact Sales 310-987-1212

Our Price \$12,990

Retail Value \$14,890

View this vehicle on our website at boutiqueautosales.com

Boutique Auto Sales

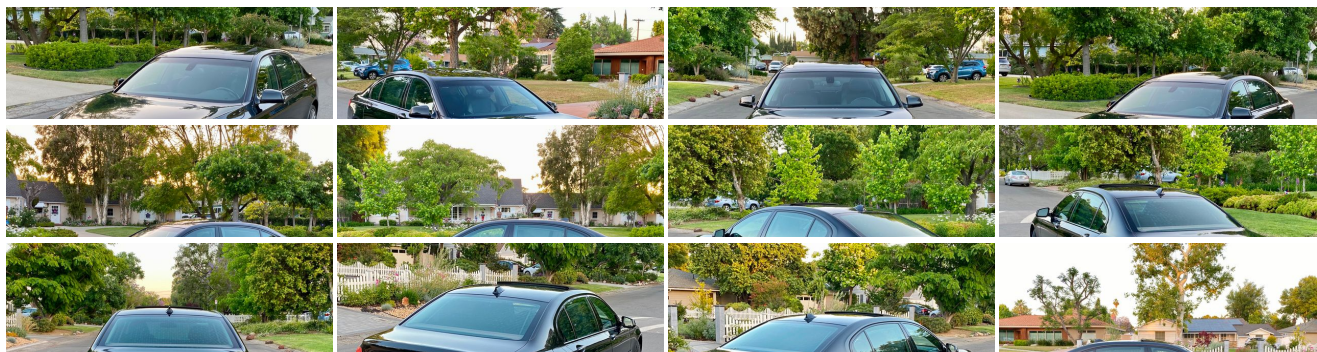
[310-987-1212](tel:310-987-1212)

5950 Laurel Canyon Blvd, North Hollywood, CA 91607

Photos

Details

Contact





Specifications:

| | |
|--------------------|---|
| Year: | 2009 |
| VIN: | WBAKB83549CY57911 |
| Make: | BMW |
| Stock: | 7911 |
| Model/Trim: | 750Li LOADED 52K MLS NAVIGATION NEW TIRES SERVICE RECORDS |
| Condition: | Pre-Owned |
| Body: | Sedan |
| Exterior: | Black Sapphire Metallic |
| Engine: | 4.4L DOHC 32-valve twin-turbocharged V8 engine -inc: 4-overhead camshafts, piezo direct fuel injection, double-VANOS steplessly variable valve timing |
| Interior: | Black Leather |
| Mileage: | 52,979 |
| Drivetrain: | Rear Wheel Drive |
| Economy: | City 14 / Highway 21 |

Vehicle Description

| Installed Options | Option Packages | | | | | | | | | | | | | | |
|--|---|--|---------|-----------------------|---------|---------------------------|---------|------------------------------|--|---|---------|--|-------|---|-------|
| Interior <ul style="list-style-type: none"> - 4-zone automatic climate control -inc: solar sensor, auto recirculation, heat-at-rest, auto ventilation - Ambiance lighting in front, rear & door panels - Anti-theft alarm system -inc: interior motion detector- Auto-dimming rearview mirror - Black panel display w/LCD main & trip odometer displays & warning indicators in dial faces -inc: electronic analog speedometer & tachometer - Brake wear display- Central locking system -inc: anti-theft feature, selective unlocking - Check control vehicle monitor system- Coded driveway protection - Dual front/rear cupholders- Dynamic cruise control- Fineline high-gloss wood trim - Front console -inc: coinholder, trunk release lockout, illumination - Front pwr heated comfort seats -inc: driver/front passenger 16-way pwr adjustments w/4-way lumbar, driver/front passenger 2-position seat memory, active head restraints - Front visors w/illuminated vanity mirrors- Front/rear floor mats - Integrated owners manual- Keyless go- Nappa leather seat trim - Navigation system -inc: hard drive, voice-activation, real-time traffic info - Pwr outlet in RH footwell - Pwr tilt/telescopic leather-wrapped multi-function steering wheel -inc: audio & phone controls, auto tilt-away, 2-position memory - Pwr windows -inc: key-off operation, 1-touch open/close, anti-trapping feature - Rear center armrest w/storage- Rear window defogger- Remote keyless entry - Remote trunk release- Smokers pkg- Universal garage door opener - Vehicle & key memory - iDrive system -inc: on-board computer, controller, (8) programmable memory buttons, 10.2" screen | Factory Installed Packages <table> <tr> <td>19 X 8.5 FRONT & 19 X 9.5 REAR MULTI-SPOKE ALLOY WHEELS (STYLE 235) -inc: P245/45R19 front & P275/40R19 rear run-flat performance tires</td><td>\$1,300</td></tr> <tr> <td>ACTIVE CRUISE CONTROL</td><td>\$2,400</td></tr> <tr> <td>ACTIVE ROLL STABILIZATION</td><td>\$1,800</td></tr> <tr> <td>ASH-GRAIN INTERIOR WOOD TRIM</td><td></td></tr> <tr> <td>BMW INDIVIDUAL COMPOSITION -inc: 20" V-spoke alloy wheels (style 301) w/performance tires, leather-finished instrument panel, shadowline exterior trim, individual door sill finishers, Alcantara headliner, full Merino leather seat trim</td><td>\$7,700</td></tr> <tr> <td>CAMERA PKG -inc: rearview camera, sideview camera</td><td>\$750</td></tr> <tr> <td>CERAMIC CONTROLS -inc: deep black glazed finished iDrive Controller bezel, deep black glazed finished front & rear ventilation controls, deep black glazed finished audio controls</td><td>\$650</td></tr> </table> | 19 X 8.5 FRONT & 19 X 9.5 REAR MULTI-SPOKE ALLOY WHEELS (STYLE 235) -inc: P245/45R19 front & P275/40R19 rear run-flat performance tires | \$1,300 | ACTIVE CRUISE CONTROL | \$2,400 | ACTIVE ROLL STABILIZATION | \$1,800 | ASH-GRAIN INTERIOR WOOD TRIM | | BMW INDIVIDUAL COMPOSITION -inc: 20" V-spoke alloy wheels (style 301) w/performance tires, leather-finished instrument panel, shadowline exterior trim, individual door sill finishers, Alcantara headliner, full Merino leather seat trim | \$7,700 | CAMERA PKG -inc: rearview camera, sideview camera | \$750 | CERAMIC CONTROLS -inc: deep black glazed finished iDrive Controller bezel, deep black glazed finished front & rear ventilation controls, deep black glazed finished audio controls | \$650 |
| 19 X 8.5 FRONT & 19 X 9.5 REAR MULTI-SPOKE ALLOY WHEELS (STYLE 235) -inc: P245/45R19 front & P275/40R19 rear run-flat performance tires | \$1,300 | | | | | | | | | | | | | | |
| ACTIVE CRUISE CONTROL | \$2,400 | | | | | | | | | | | | | | |
| ACTIVE ROLL STABILIZATION | \$1,800 | | | | | | | | | | | | | | |
| ASH-GRAIN INTERIOR WOOD TRIM | | | | | | | | | | | | | | | |
| BMW INDIVIDUAL COMPOSITION -inc: 20" V-spoke alloy wheels (style 301) w/performance tires, leather-finished instrument panel, shadowline exterior trim, individual door sill finishers, Alcantara headliner, full Merino leather seat trim | \$7,700 | | | | | | | | | | | | | | |
| CAMERA PKG -inc: rearview camera, sideview camera | \$750 | | | | | | | | | | | | | | |
| CERAMIC CONTROLS -inc: deep black glazed finished iDrive Controller bezel, deep black glazed finished front & rear ventilation controls, deep black glazed finished audio controls | \$650 | | | | | | | | | | | | | | |
| Exterior <ul style="list-style-type: none"> - 18" x 8.0" star-spoke alloy wheels (style 250) -inc: P245/50R18 all-season run-flat tires - Adaptive brakelights- Body-color front/rear bumpers - Body-color illuminated door handles -inc: ground illumination - Body-color pwr heated auto-dimming mirrors -inc: 2-position memory, RH auto tilt-down in reverse | | | | | | | | | | | | | | | |

- Free-form halogen foglights -inc: cornering lights function
- Pwr tilt/slide glass moonroof -inc: key-off operation, 1-touch, pwr sunshade, wind deflector
- Rain-sensing variable-speed intermittent windshield wipers -inc: heated washer jets
- Xenon automatic adaptive headlights -inc: dynamic auto-leveling, cornering lights, corona rings

Safety

- 4-zone automatic climate control -inc: solar sensor, auto recirculation, heat-at-rest, auto ventilation
- Ambiance lighting in front, rear & door panels
- Anti-theft alarm system -inc: interior motion detector- Auto-dimming rearview mirror
- Black panel display w/LCD main & trip odometer displays & warning indicators in dial faces -inc: electronic analog speedometer & tachometer
- Brake wear display- Central locking system -inc: anti-theft feature, selective unlocking
- Check control vehicle monitor system- Coded driveway protection
- Dual front/rear cupholders- Dynamic cruise control- Fineline high-gloss wood trim
- Front console -inc: coinholder, trunk release lockout, illumination
- Front pwr heated comfort seats -inc: driver/front passenger 16-way pwr adjustments w/4-way lumbar, driver/front passenger 2-position seat memory, active head restraints
- Front visors w/illuminated vanity mirrors- Front/rear floor mats
- Integrated owners manual- Keyless go- Nappa leather seat trim
- Navigation system -inc: hard drive, voice-activation, real-time traffic info
- Pwr outlet in RH footwell
- Pwr tilt/telescopic leather-wrapped multi-function steering wheel -inc: audio & phone controls, auto tilt-away, 2-position memory
- Pwr windows -inc: key-off operation, 1-touch open/close, anti-trapping feature
- Rear center armrest w/storage- Rear window defogger- Remote keyless entry
- Remote trunk release- Smokers pkg- Universal garage door opener
- Vehicle & key memory
- iDrive system -inc: on-board computer, controller, (8) programmable memory buttons, 10.2" screen

Mechanical

- 4-wheel ventilated disc brakes w/electronic brake proportioning
- 4.4L DOHC 32-valve twin-turbocharged V8 engine -inc: 4-overhead camshafts, piezo direct fuel injection, double-VANOS steplessly variable valve timing
- 6-speed sport automatic transmission -inc: adaptive transmission control (ATC), E-Shift control, sport, Steptronic manual shift modes, steering wheel-mounted paddle shifters
- Dynamic damping control- Electromechanical parking brake
- Front multi-link double-wishbone suspension- Rear multi-link integral-V suspension
- Rear-wheel drive- Self-leveling air suspension
- Speed-sensitive variable-assist variable-ratio rack-&-pinion pwr steering
- Start/stop button- Twin-tube gas-pressure shock absorbers

COLD WEATHER PKG

-inc: heated steering wheel, ski bag, heated rear seats **\$800**

CONVENIENCE PKG

-inc: Comfort Access system, auto soft-close doors, auto trunk opening & closing **\$1,700**

DRIVER ASSISTANCE PKG

-inc: high beam assistant, lane departure warning, active blind spot detection **\$1,350**

FINELINE-MATTE INTERIOR WOOD TRIM

HEAD-UP DISPLAY

\$1,300

LEATHER-FINISHED INSTRUMENT PANEL

\$1,200

LUXURY REAR SEATING PKG

-inc: rear ventilated heated & cooled comfort seats **\$3,500**

NIGHT VISION W/PEDESTRIAN DETECTION

\$2,600

PREMIUM SOUND PKG

-inc: AM/FM stereo w/6-disc in-dash CD/DVD changer, MP3 capability, iPod/USB adapter, premium hi-fi sound system, 600-watt digital 9-channel amp, digital sound processing (DSP), (16) speakers w/(2) subwoofers **\$2,000**

PWR REAR SUNSHADE & PWR REAR SIDE WINDOW SHADES

\$1,000

SIRIUS SATELLITE RADIO

-inc: (1) year subscription **\$595**

SMARTPHONE INTEGRATION

\$150

WALNUT HONEY WOOD INTERIOR TRIM

AZURITE BLACK METALLIC

\$1,800

BLACK, NAPPA LEATHER SEAT TRIM

Option Packages Total

\$32,595

Boutique Auto Sales

Boutique Auto Sales

View this car on our website at boutiqueautosales.com/6801668

Website: boutiqueautosales.com

Phone: [310-987-1212](tel:310-987-1212)

Map: [5950 Laurel Canyon Blvd, North Hollywood, CA 91607](#)

